

**WOOD GUARD RAIL REQUIRED**

Sta	From Sta	To Sta	Length	Material
412+70	to Sta	414+02	Length 24 ft	12" x 12" x 12" Posts
422+00	to Sta	423+22	24	12" x 12" x 12" Posts
418+72	to Sta	419+02	Length 30 ft	12" x 12" x 12" Posts
418+72	to Sta	419+02	24	12" x 12" x 12" Posts
422+00	to Sta	423+22	24	12" x 12" x 12" Posts
			<b>80</b>	
			<b>208</b>	<b>TOTAL THIS SHEET</b>

**CABLE GUARD RAIL REQUIRED**

Sta	From Sta	To Sta	Length	Material
412+00	to Sta	415+92	Length 392 ft	1/2" x 1/2" x 1/2" Posts

**NEW CULVERTS REQUIRED**

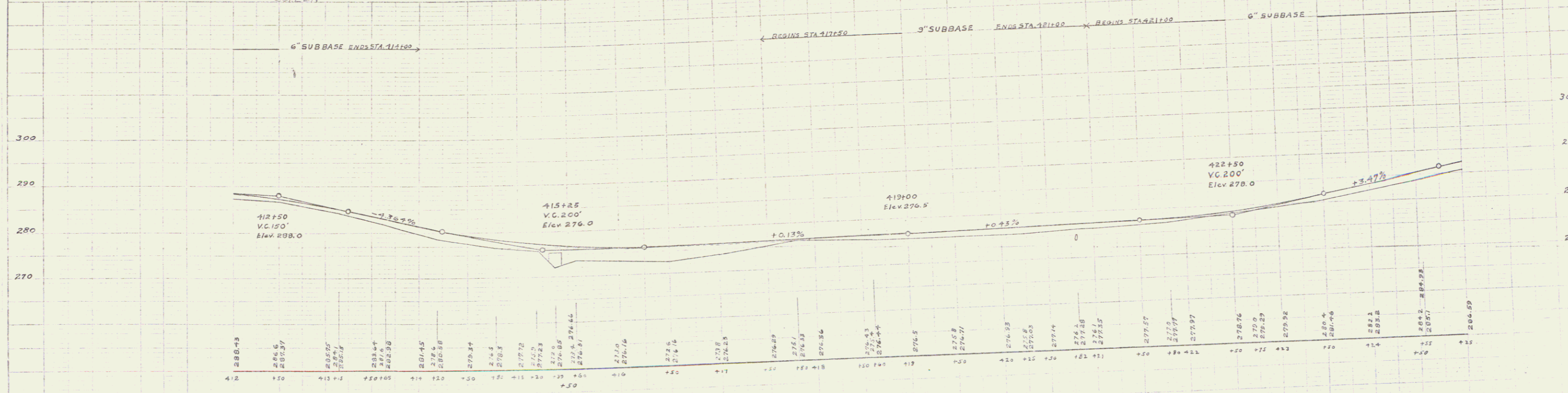
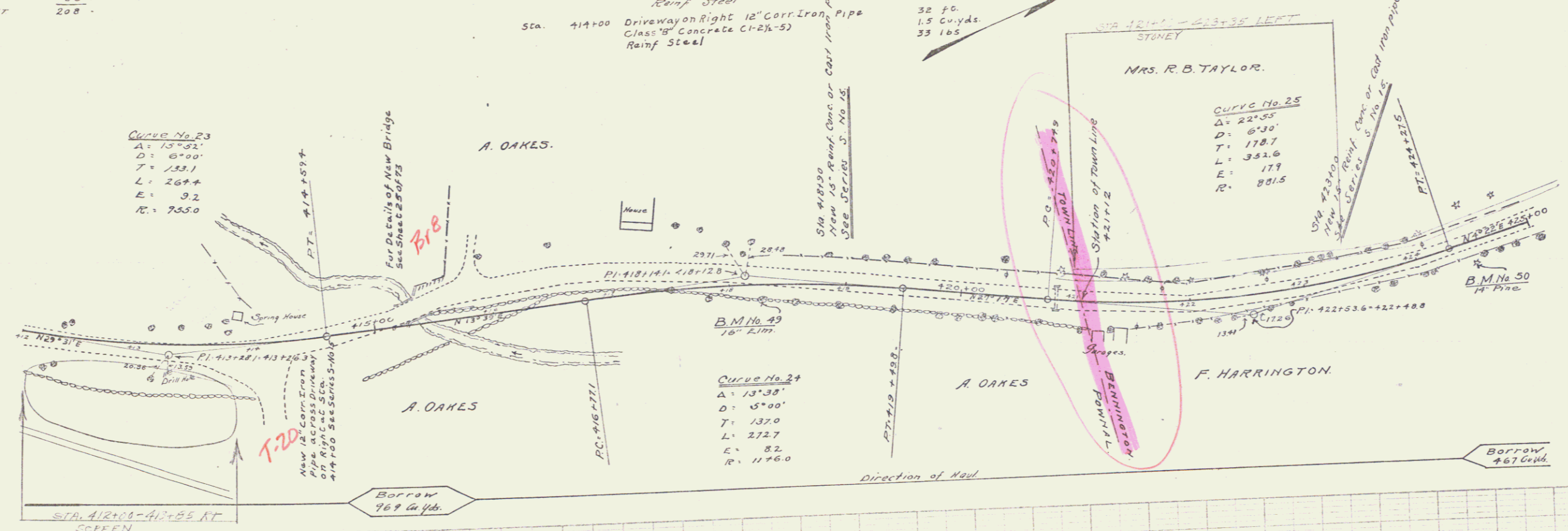
Sta	Material	Length	Notes
418+90	15" Reinf Conc. or Cast Iron pipe	32 ft	CLASS B Conc. (1-2 1/2" S)
423+00	15" Reinf Conc. or Cast Iron Pipe	36 ft	CLASS B Conc. (1-2 1/2" S)
414+00	Driveway on Right 12" Cor. Iron Pipe	32 ft	CLASS B Conc. (1-2 1/2" S)

**6" SUB-BASE REQUIRED**

Sta	From Sta	To Sta	Length
412+00	to Sta	414+00	Length 200 ft
421+00	to Sta	423+00	200 ft
			<b>400</b>

**9" SUB-BASE REQUIRED**

Sta	From Sta	To Sta	Length
417+50	to Sta	421+00	Length 350 ft



BM. No 49 Spike in 16" Elm, Right of Sta. 418+29 Elev 274.93  
 BM. No 50 Spike in 14" Pine, Right of Sta. 424+50 Elev 282.55

Series F No 73B  
 Sheet 13 of 13