

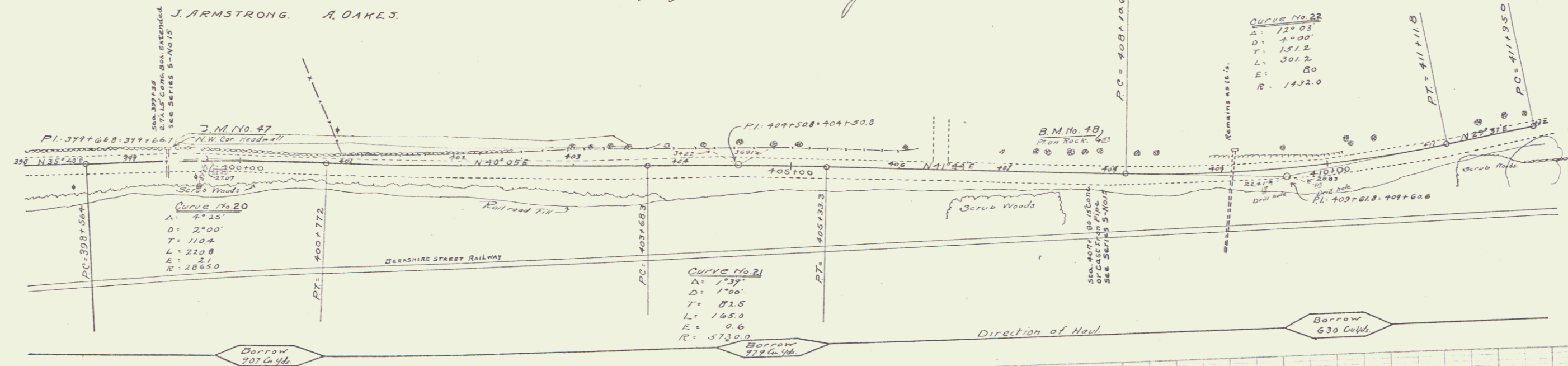
Nothing

WOOD GUARD RAIL REQUIRED ON RIGHT
 Sta. 399+23 to 399+47 Length 24ft
 " 407+58 to 407+92 " 34ft
TOTAL THIS SHEET 40ft

CABLE GUARD RAIL REQUIRED ON LEFT
 Sta. 398+00 to Sta. 412+00 Length 1400ft

NEW CULVERTS REQUIRED
 Sta. 399+35 27x15" Conc. Box Extended 31 Cu. Yds.
 Class "A" Concrete (1-2-4) 170 lbs.
 Reinf. Steel 36 ft.
 Sta. 407+80 15" Conc. or Cast Iron Pipe 21 Cu. Yds.
 Class "B" Concrete (1-2h-3) 33 lbs.
 Reinf. Steel

6" SUBBASE REQUIRED
 Sta. 398+00 to Sta. 412+00 Length 1400ft



B.M. 47 N.W. Corner of Headwall, Left of Sta. 399+35 Elev. 287.60
 B.M. 18 Drill Hole on Rock, Left of Sta. 407+92 Elev. 288.04

Series # No 73B
 Sheet 17 of 73