

WOOD GUARD RAIL REQUIRED

ON LEFT		
Sta. 370+88 to Sta. 371+12	Length	24 ft.
" 375+66 " " 375+30	"	24 ft.
" 379+23 " " 379+47	"	24 "
ON RIGHT		
Sta. 375+66 to Sta. 375+30	Length	24 ft.
" 377+87 " " 379+47	"	160 ft.
" 383+75 " " 384+00	"	25 ft.
TOTAL THIS SHEET		281

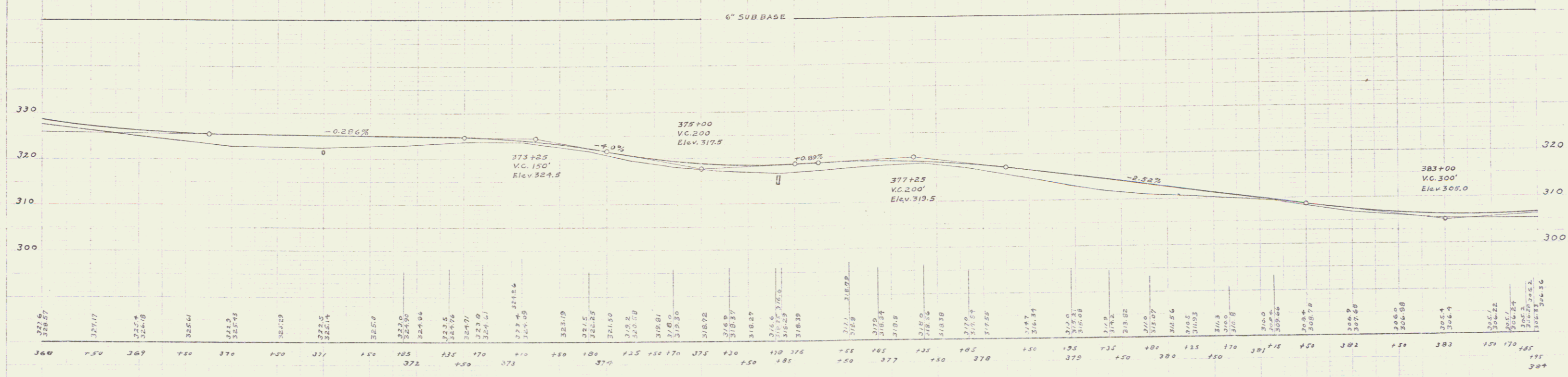
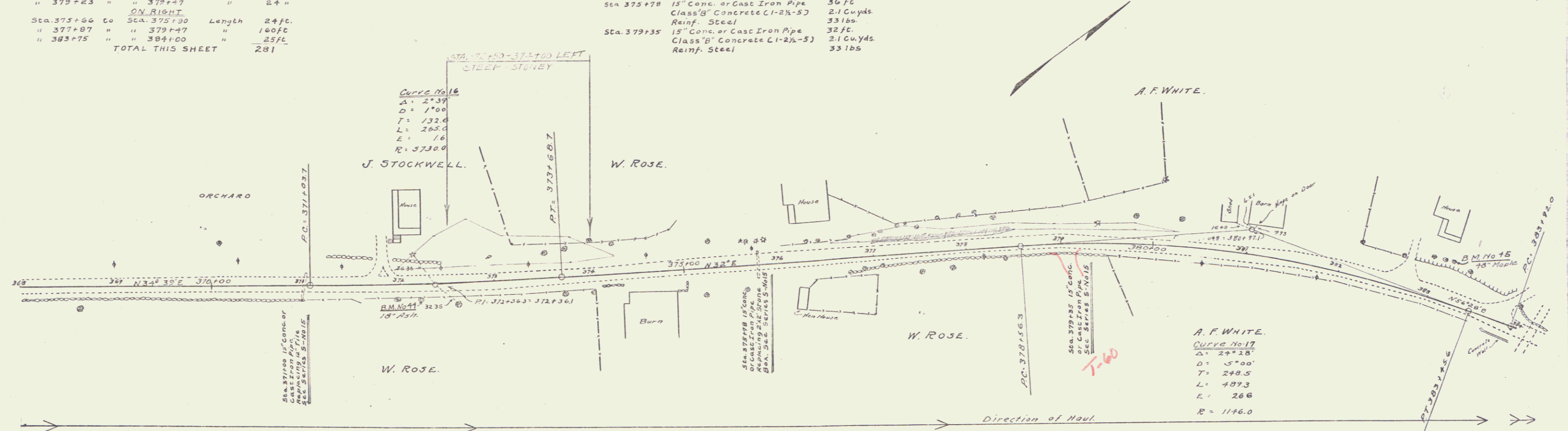
CABLE GUARD RAIL REQUIRED ON RIGHT
Sta. 368+00 to Sta. 372+56 Length 456 ft.

NEW CULVERTS REQUIRED

Sta. 371+00	13" Conc. or Cast Iron Pipe	40 ft.
	Class 'B' Concrete (1-2 1/2-5)	2.1 Cu. Yds.
	Reinf. Steel	33 lbs.
Sta. 375+78	15" Conc. or Cast Iron Pipe	56 ft.
	Class 'B' Concrete (1-2 1/2-5)	2.1 Cu. Yds.
	Reinf. Steel	33 lbs.
Sta. 379+35	18" Conc. or Cast Iron Pipe	32 ft.
	Class 'B' Concrete (1-2 1/2-5)	2.1 Cu. Yds.
	Reinf. Steel	33 lbs.

6" SUBBASE REQUIRED
Sta. 368+00 to Sta. 384+00 Length 1600 ft.

738 1926 12 73



B.M. No. 44 Spike in 18" Ash, Right of Sta. 372+21 Elev. 328.60
B.M. No. 45 Spike in 42" Maple, Left of Sta. 383+15 Elev. 310.12

Series F No. 738
Sheet 12 of 73