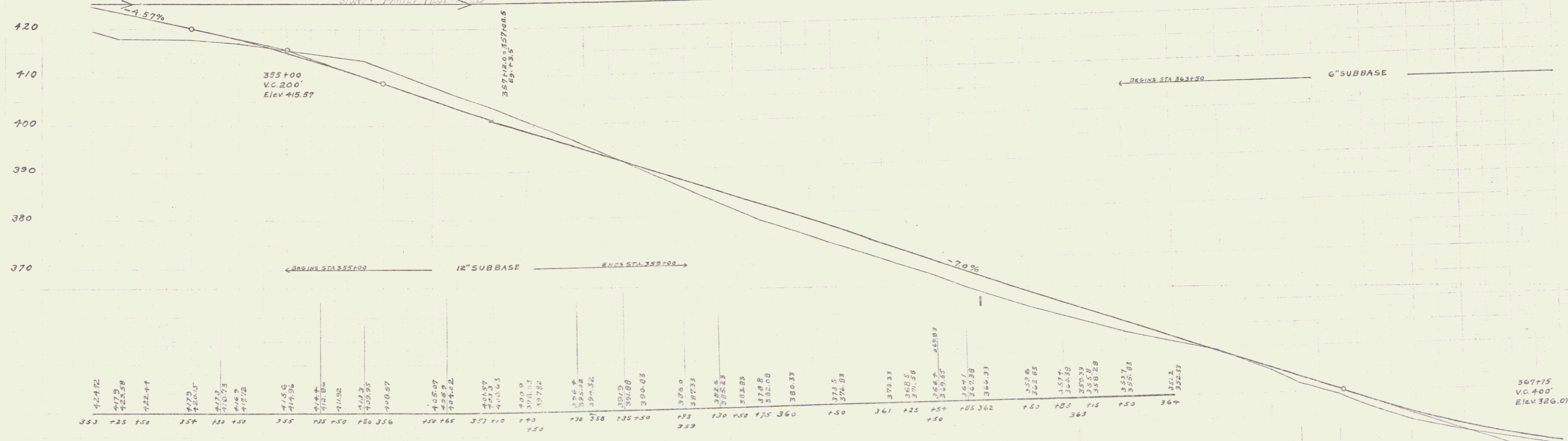
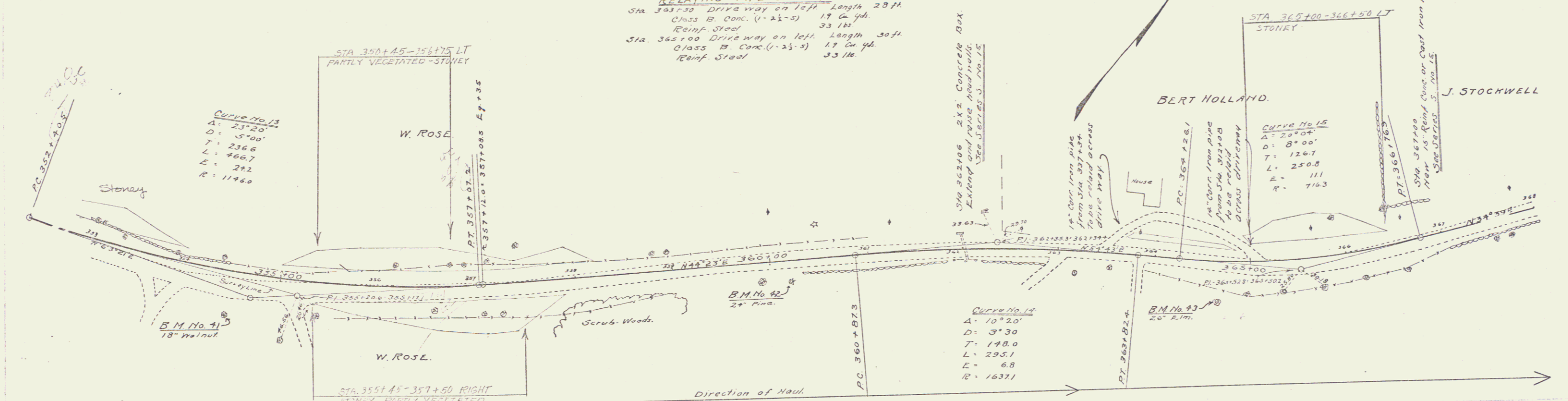


**WOOD GUARD REQUIRED ON LEFT**  
 STA 366+88 to STA 367+12 Length 24 ft  
 On Right  
 STA 353+00 to STA 353+45 Length 45 ft  
 TOTAL THIS SHEET 69 ft

**CABLE GUARD RAIL REQUIRED ON LEFT**  
 STA 357+00 to STA 362+12 Length 312 ft  
 On Right  
 STA 359+50 to STA 363+50 Length 400 ft  
 STA 366+88 to STA 368+00 Length 112 ft  
 TOTAL THIS SHEET 824 ft

**NEW CULVERTS REQUIRED**  
 STA 362+00 2x2 Reinf Conc. Extension Class A Conc. (1-2-4) 34 cu yd Reinf. Steel 324 lbs  
 STA 367+00 12" Reinf Conc. or Cast Iron pipe Length 36 ft Class B Conc. (1-2-3) 21 cu yd Reinf. Steel 33 lbs  
**RELAYING PIPE CULVERTS**  
 STA 363+50 Drive way on left Length 28 ft Class B Conc. (1-2-3) 17 cu yd Reinf. Steel 33 lbs  
 STA 365+00 Drive way on left Length 30 ft Class B Conc. (1-2-3) 17 cu yd Reinf. Steel 33 lbs

**12" SUB-BASE REQUIRED**  
 STA 355+00 to STA 359+00 Length 400 ft 12x3.5 Length 400 ft  
**6" SUB-BASE REQUIRED**  
 STA 362+50 to STA 365+00 Length 450 ft



B.M. No 41 Spike in 18" Walnut, Right of Sta. 354+37 Elev 417.48  
 B.M. No 42 Spike in 24" Pine, Right of Sta. 360+22 Elev 378.88  
 B.M. No 43 Spike in 26" Elm, Right of Sta. 364+03 Elev 376.03

367+15 V.C. 400' Elev 376.07  
 Series E No 730  
 Sheet 11 of 73