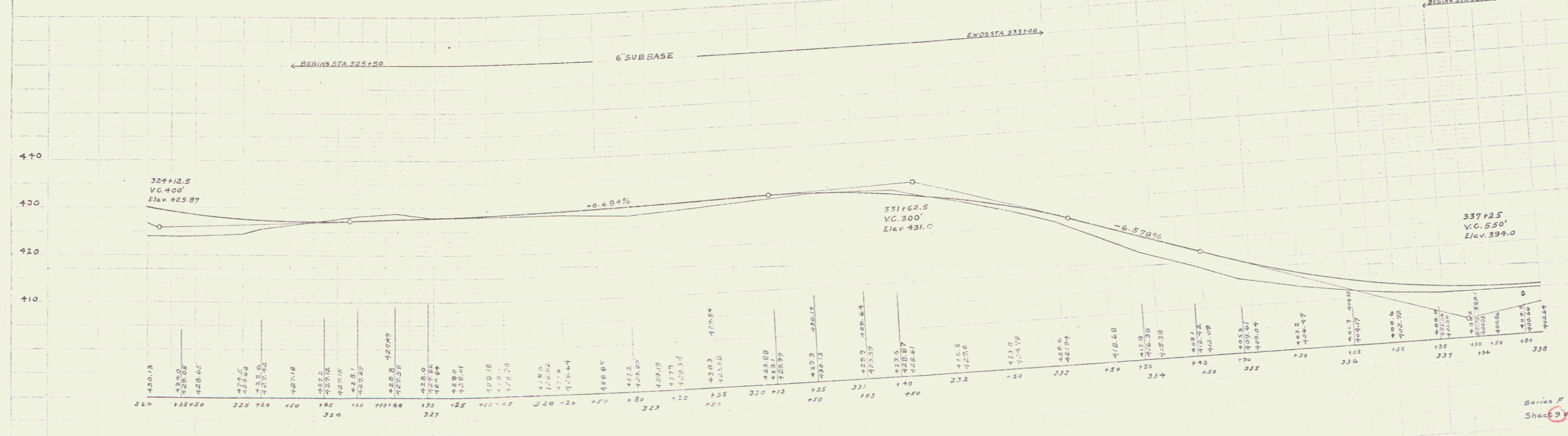
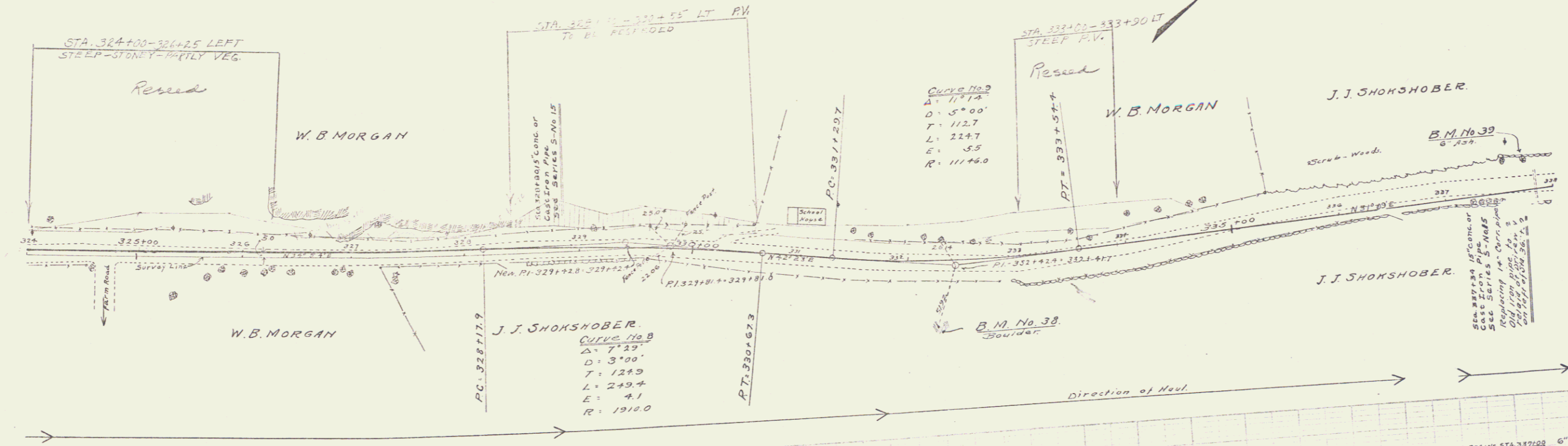


**WOOD GUARD RAIL REQUIRED**  
**ON LEFT**  
 Sta. 324+00 to Sta. 324+30 Length 30 ft  
 " 328+60 " Sta. 328+92 " 24 "  
 " 337+22 " " 337+46 " 24 "  
**ON RIGHT**  
 Sta. 328+50 to Sta. 329+54 Length 104 ft  
**TOTAL THIS SHEET 130 FT**

**CABLE GUARD RAIL REQUIRED**  
**ON RIGHT**  
 Sta. 324+00 to Sta. 324+49 Length 49 ft  
 Sta. 325+50 " " 327+60 " 210 ft  
 " 336+00 " " 339+00 " 200 ft  
**TOTAL THIS SHEET 459 FT**

**NEW CULVERTS REQUIRED**  
 Sta. 320+00 12" Conc. or Cast Iron Pipe 2.1 Cu. yds.  
 Class 'B' Concrete (1-2X-5) 33 lbs.  
 Reinf. Steel  
 Sta. 337+34 15" Conc. or Cast Iron Pipe 32 ft  
 Class 'B' Concrete (1-2X-5) 2.1 Cu. yds.  
 Reinf. Steel

**6" SUBBASE REQUIRED**  
 Sta. 325+50 to Sta. 333+00 Length 750 ft  
 " 337+00 " " 339+00 " 100 "



B.M. No. 39 Boulder in Pasture, Right of Sta. 332+27 Elev. 421.01  
 B.M. No. 39 Spike in 6" Ash, Left of Sta. 337+75 Elev. 402.32

Series P No 73B  
 Sheet 9 of 73