

WOOD GUARD RAIL REQUIRED

ON LEFT	
Sta. 31196 to Sta. 312120	Length 24 M
Sta. 31193 to Sta. 318117	24 "
Sta. 32018 to Sta. 320144	26 "
Sta. 32170 to Sta. 324100	130 "
ON RIGHT	
Sta. 31196 to Sta. 312120	24 "
TOTAL THIS SHEET	226

CABLE GUARD REQUIRED

ON RIGHT	
Sta. 31193 to Sta. 321100	Length 607 ft

NEW GULVERTS REQUIRED

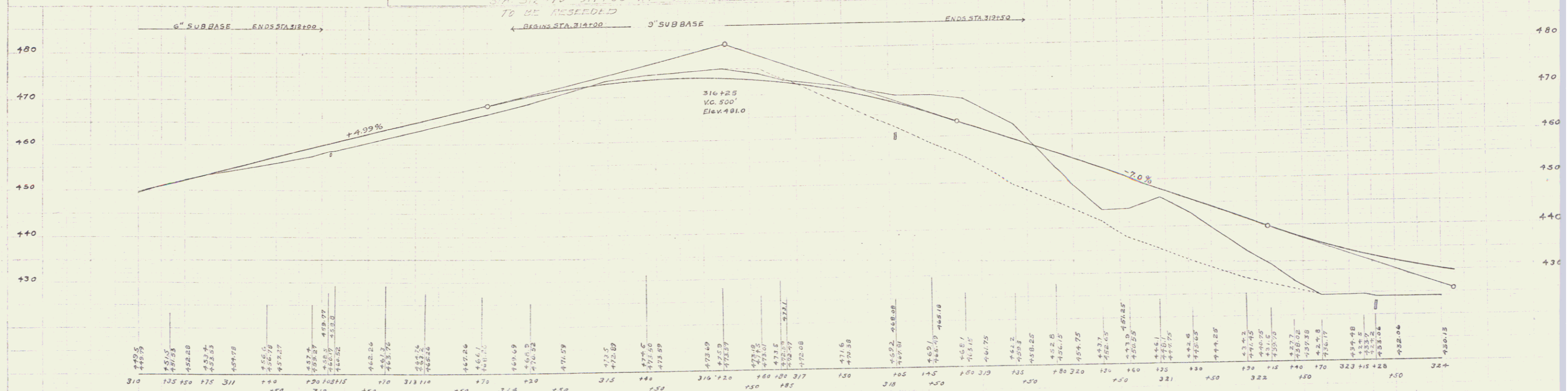
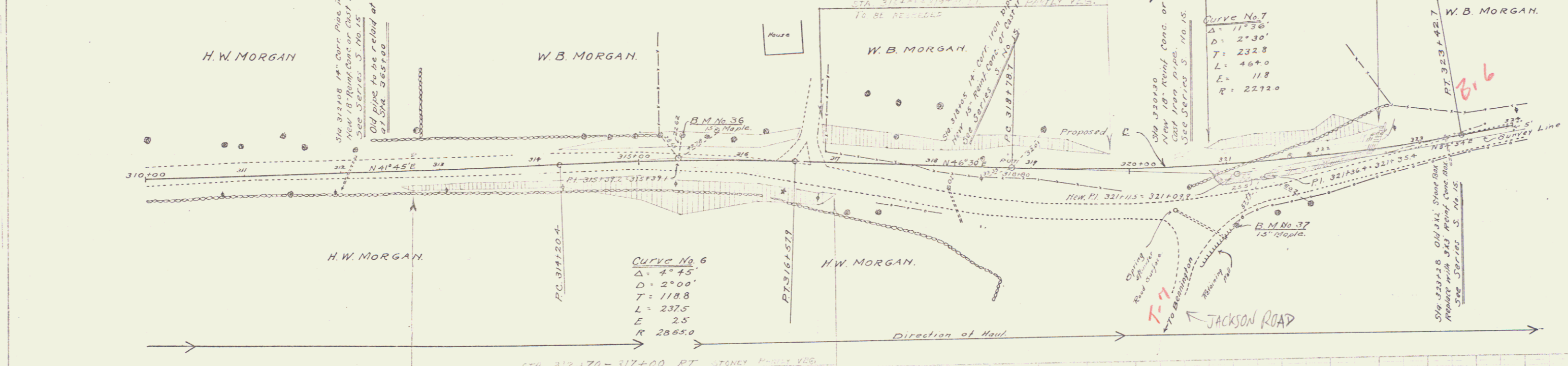
Sta. 312108	18" Reinf. Conc. or Cast Iron pipe Length 40 ft	17 Cu yd.
	Class A Conc. (1-2-4)	60 lbs.
	Reinf. Steel	
Sta. 310105	15" Reinf. Conc. or Cast Iron pipe Length 36 ft	21 Cu yd.
	Class B Conc. (1-2-3)	39 lbs.
	Reinf. Steel	
Sta. 320130	18" Reinf. Conc. or Cast Iron pipe Length 52 ft	19 Cu yd.
	Class A Conc. (1-2-4)	60 lbs.
	Reinf. Steel	
Sta. 323128	3x3' Reinf. Conc. Box Culvert	24.5 Cu yd.
	Class A Conc. (1-2-4)	1613 lbs.
	Reinf. Steel	

6" SUB-BASE REQUIRED

Sta. 310100 to Sta. 312100	Length 200 ft
----------------------------	---------------

9" SUB-BASE REQUIRED

Sta. 314100 to Sta. 317150	Length 350 ft
----------------------------	---------------



B.M. No. 36 Spike in 15" Maple, Left of Sta. 315+44 Elev. 478.14
 B.M. No. 37 Spike in 15" Maple, Left of Sta. 321+10 Elev. 430.14