

WOOD SILLING RAIL REQUIRED ON LEFT
 Sta 289+11 to Sta 289+65 Length 54 ft
 289+23 " 289+27 " 24 "
 293+17 " 293+41 " 24 "
ON RIGHT
 Sta 289+2 " to Sta 289+65 Length 63 ft
 " 289+10 " 289+10 " 180 "

CABLE GUARD RAIL REQUIRED ON RIGHT
 Sta 292+50 to Sta 295+94 Length 344 ft

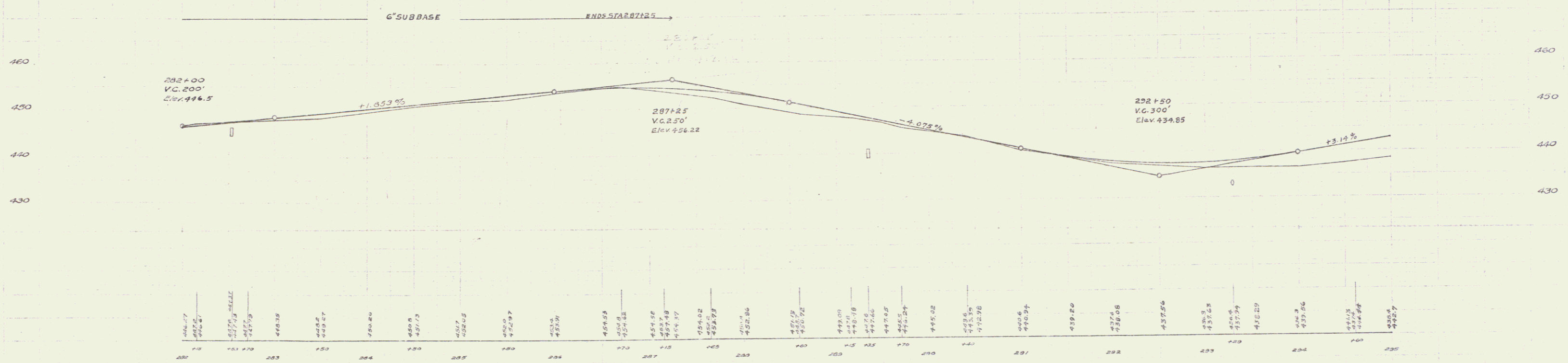
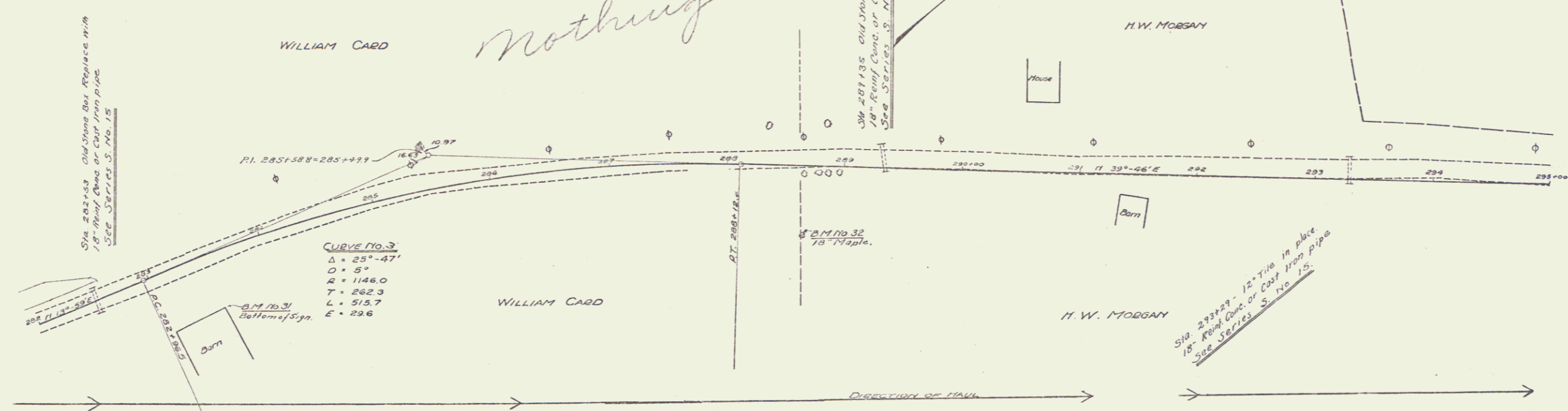
NEW CULVERTS REQUIRED
 Sta 292+53 - 18" Reinf Conc or Cast Iron pipe Length 28 ft
 Class A. Cont. (1-2-4) 19 cu yd
 Reinf. Steel 60 lbs.
 Sta 289+35 - 18" Reinf Conc or Cast Iron pipe Length 36 ft
 Class A. Cont. (1-2-4) 19 cu yd
 Reinf. Steel 60 lbs.
 Sta 293+29 - 18" Reinf Conc or Cast Iron pipe Length 40 ft
 Class A. Cont. (1-2-4) 19 cu yd
 Reinf. Steel 60 lbs.

6" SUB-BASE REQUIRED
 Sta 282+00 to 287+25 Length 525 ft

73B 1926 6 73

AM 374803 3-25

AM 374803 3-25
 AM 374803 3-25
 AM 374803 3-25



B.M. 70.31 Bottom of Sign, N.W. Car Barn, Right of Sta. 283+52 Elev. 446.33
 B.M. No. 32 18" Maple Tree Right of Sta. 289+65 Elev. 442.29

Series No. 73B
 Sheet 6 of 73