

WOOD GUARD RAIL REQUIRED

Sta	Length	Notes
270+00 to Sta 272+20	24 ft	
270+00	24	
270+03	24	
270+28	24	
271+03	24	
273+96	24	
276+69	24	
276+63	24	
269+28	36	
271+54	32	
TOTAL THIS SHEET		320 FT

NEW CULVERTS REQUIRED

Sta 269+40	18" Concrete or Cast Iron Pipe 40ft	21 Cu.yds.
	1-2 1/2" Concrete	33 lbs.
Sta. 271+74	18" Concrete or Cast Iron Pipe 44ft	1.9 Cu.yds
	1-2-4 Concrete	60 lbs.
Sta. 274+08	18" Concrete or Cast Iron Pipe 32ft	1.9 Cu.yds.
	1-2-4 Concrete	60 lbs.
Sta. 276+82	18" Concrete or Cast Iron Pipe 32ft	1.9 Cu.yds.
	1-2-4 Concrete	60 lbs.
Sta. 278+75	18" Concrete or Cast Iron Pipe 38ft	1.9 Cu.yds.
	1-2-4 Concrete	60 lbs.

RELAYING PIPE CULVERTS

Sta. 280+35 on Right of Driveway	Length 26ft	Class B Conc. (1-2-3)	1.5 Cu.yd.
		Reinf Steel	33 lbs.

SUB BASE REQUIRED

Sta 272+25 to Sta 278+05	Length 575 ft	
Sta 281+00 to Sta 282+00	Length 100 ft	

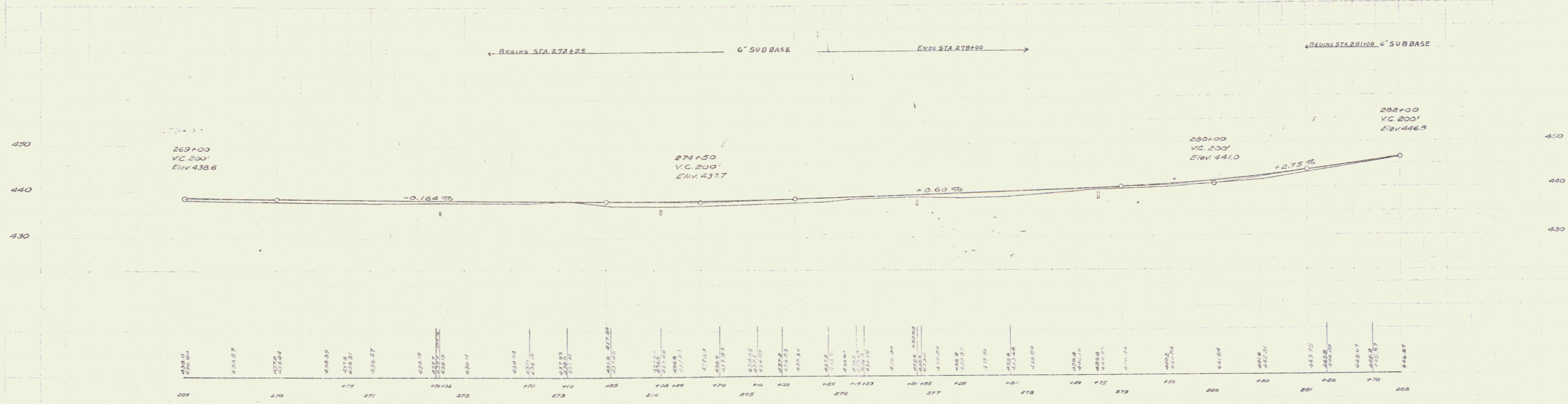
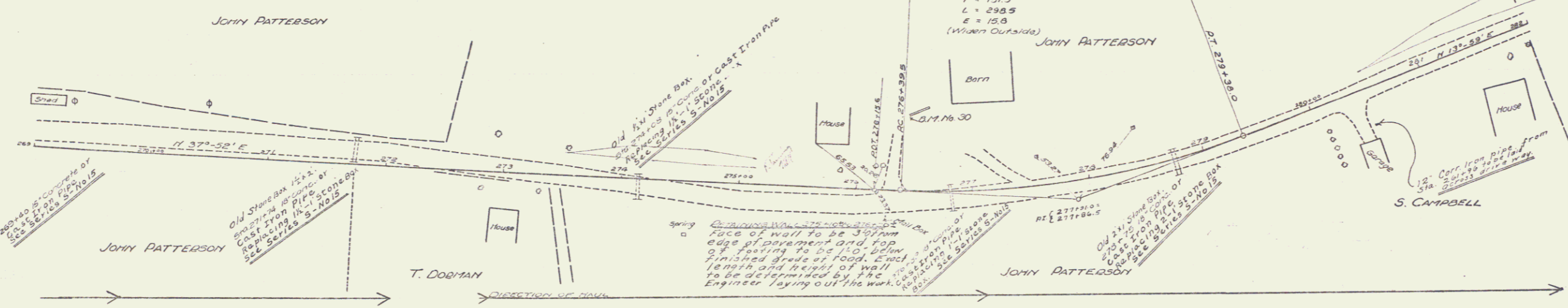
RETAINING WALL REQUIRED
 Sta. 277+00 to 277+02 Length 710 ft.
 (Built on left of Road as per Note)
 1-2 1/2" Concrete 470 Cu.yds

Nothing

F019-1(1) 1961
 F019-1(16) 9/1
 738 1925 5 73

S.E. 5-25
 JOHN PATTERSON

S.E. 5-25
 JOHN PATTERSON



B/T 16.30 Drill hole, South end of Wall, Left of Sta. 276+42 Elev. 441.67