

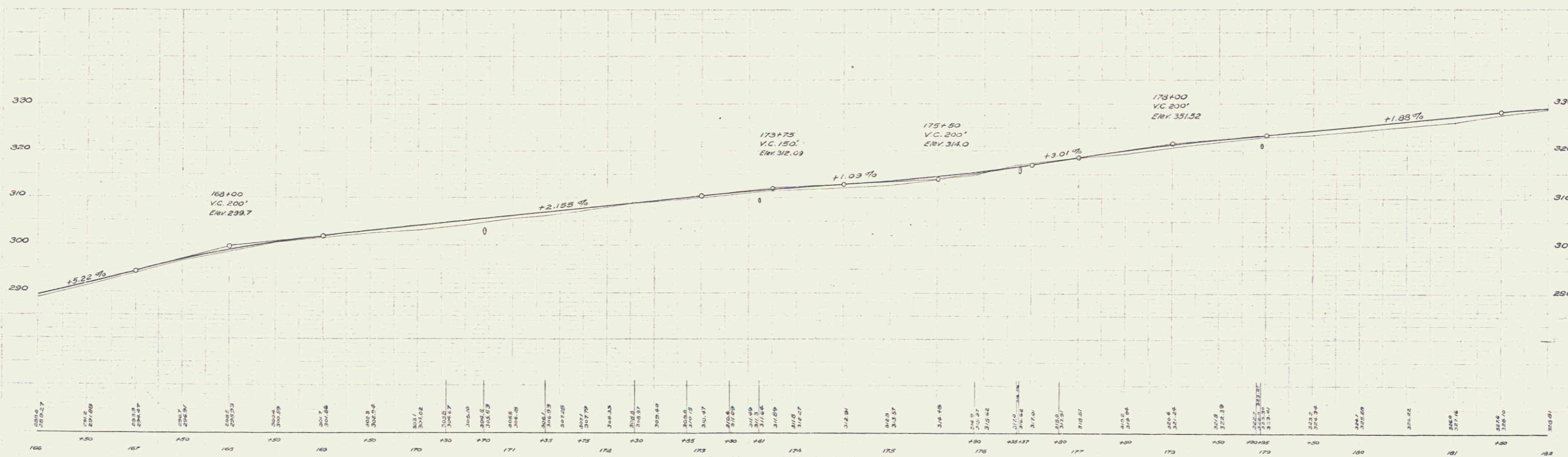
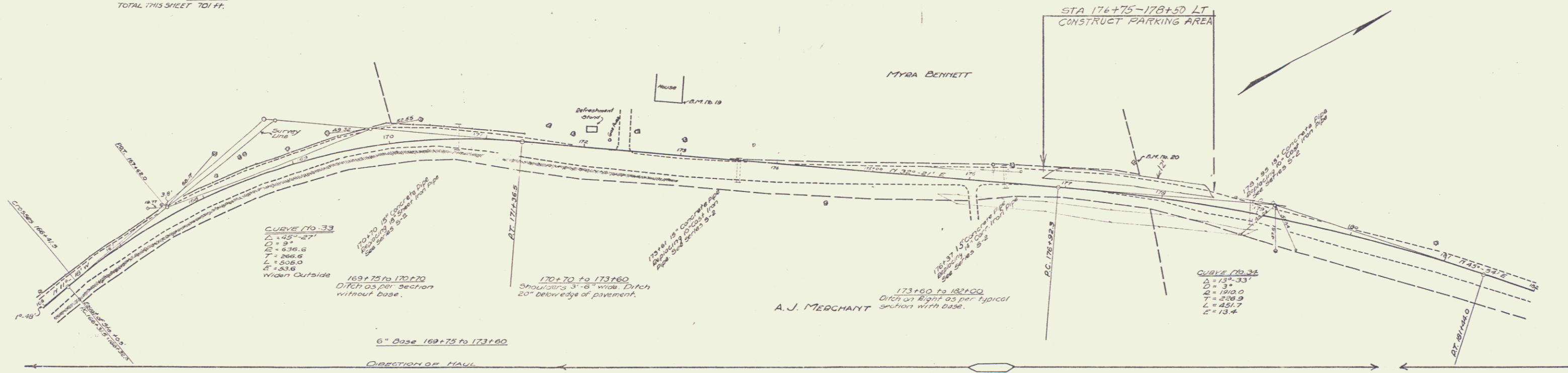
GUARD RAIL REQUIRED
ON LEFT
 Sta 166+00 to Sta 171+33 Length 533 ft.
 = 173+49 to = 173+73 " 24 "
 = 176+25 to = 176+49 " 24 "
 = 178+63 to = 178+07 " 24 "
ON RIGHT
 Sta 170+58 to Sta 170+52 Length 24 ft.
 = 173+49 to = 173+73 " 24 "
 = 176+25 to = 176+49 " 24 "
 = 178+63 to = 178+07 " 24 "
TOTAL THIS SHEET 701 FT.

NEW CULVERTS REQUIRED
 Sta. 170+70 15" Concrete Pipe 32 ft.
 = 1-2 1/2-5 Concrete 2.0 cu yds.
 Sta 173+61 15" Concrete Pipe 36 ft.
 = 1-2 1/2-5 Concrete 2.0 cu yds.
 Sta 176+37 15" Concrete Pipe 32 ft.
 = 1-2 1/2-5 Concrete 2.0 cu yds.
 Drop Inlet
 Sta. 178+95 15" Concrete Pipe 30 ft.
 = 1-2 1/2-5 Concrete 2.0 cu yds.

SUB BASE REQUIRED
 169+75 to 173+60 Length 385 ft.
 173+60 to 182+00 " 840 "
 (Laid as per Note)

Unless otherwise noted on this plan, or authorized by the Engineer, there shall be between Stations 173+60 and 182+00, at least 6" of gravel under pavement and 6" of gravel on all good quality in the old road surface. Shaded portions on Cross Sections show the area of sub-gravel required and to be built for.

REG. ROAD	STA. 173+00	FIELD NO.	173A	DATE	7-22-34
SHEET NO.	6	TOTAL SHEETS	6		



3 ft. No. 19 Bottom of Bottom-board, 11 ft. Oak House Left of Sta. 172+98 Elev. 305.46
 2 ft. No. 20 13 Walnut Tree Left of Sta. 177+68 Elev. 317.67

Jenica No. 214
 5/10/34
 5

R.M. STEWART 3-23

JENICA NO. 214 5/10/34