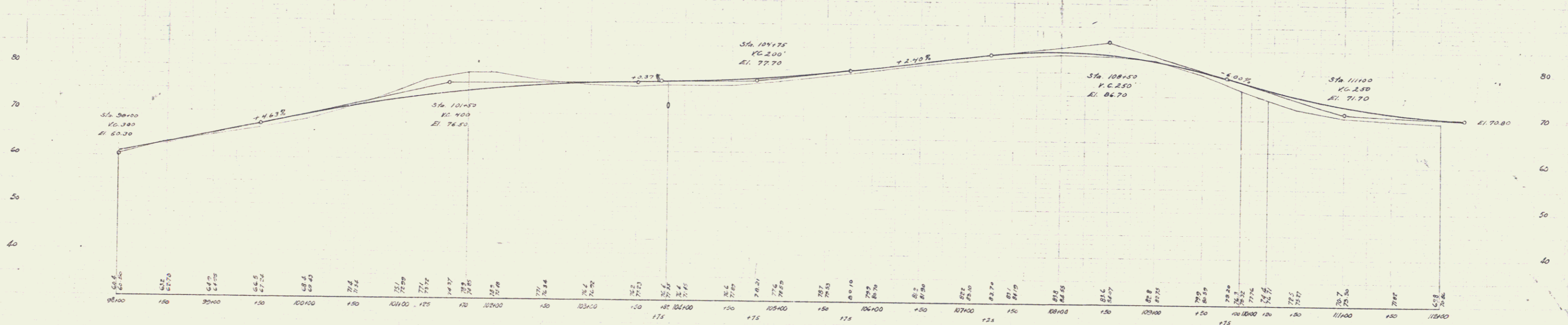
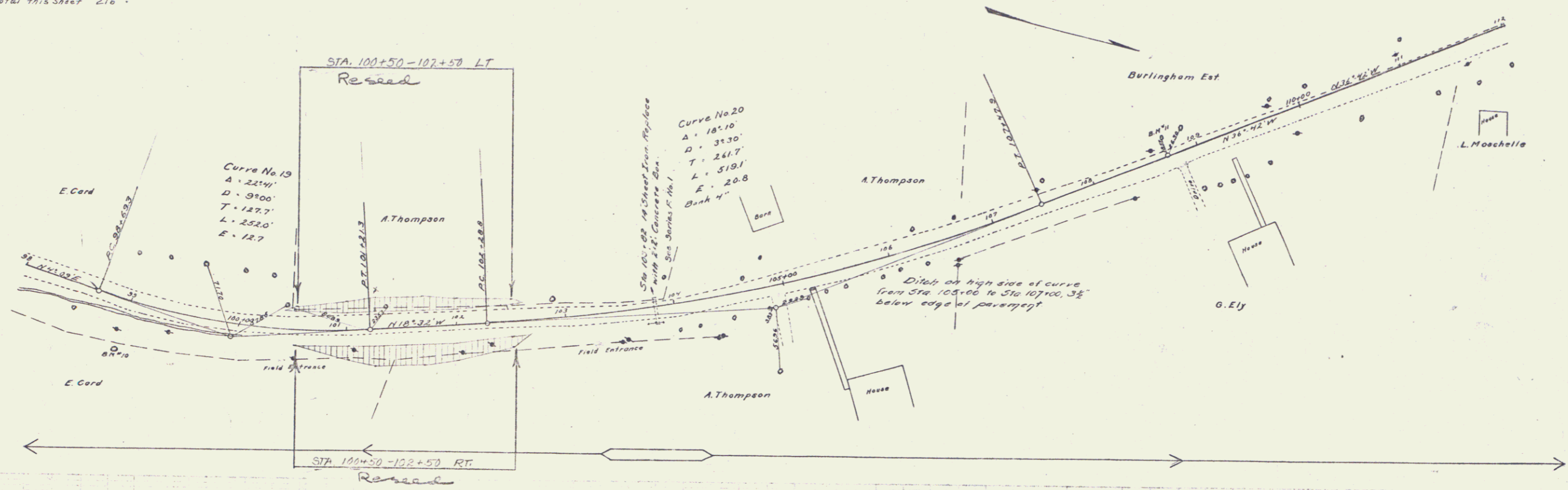


GUARD RAIL REQUIRED
 ON RIGHT Sta 103+70 to Sta 103+94 24 ft
 ON LEFT Sta 103+22 to Sta 103+94 72 ft
 110+35 " 111+55 120 "
 Total this sheet 216 "

SUB BASE REQUIRED
 Sta 98+100 to Sta 103+00 Length 500 ft

NEW CULVERTS REQUIRED
 Sta 103+82 2x2 Concrete
 1-2-4 " 53 cu ft
 1-2-5 " 8.0 "

NO.	DATE	BY	CHKD.	APP.	REVISION
1	7-25	J. J. [unclear]	[unclear]	[unclear]	[unclear]



B.M. #10 notch in 40 inch elm 48 feet on right Sta. 98+00 El. 70.84
 B.M. #11 notch in 30 inch elm 16 feet on left Sta. 108+72 El. 84.20

Series 10 of 11
 Sheet 10 of 11