

GUARD RAIL REQUIRED

ON RIGHT

Sta 26+67 to Sta 26+91	24 ft
27+78 - 29+94	24 "
33+94 - 33+68	24 "
35+80 - 40+04	24 "

ON LEFT

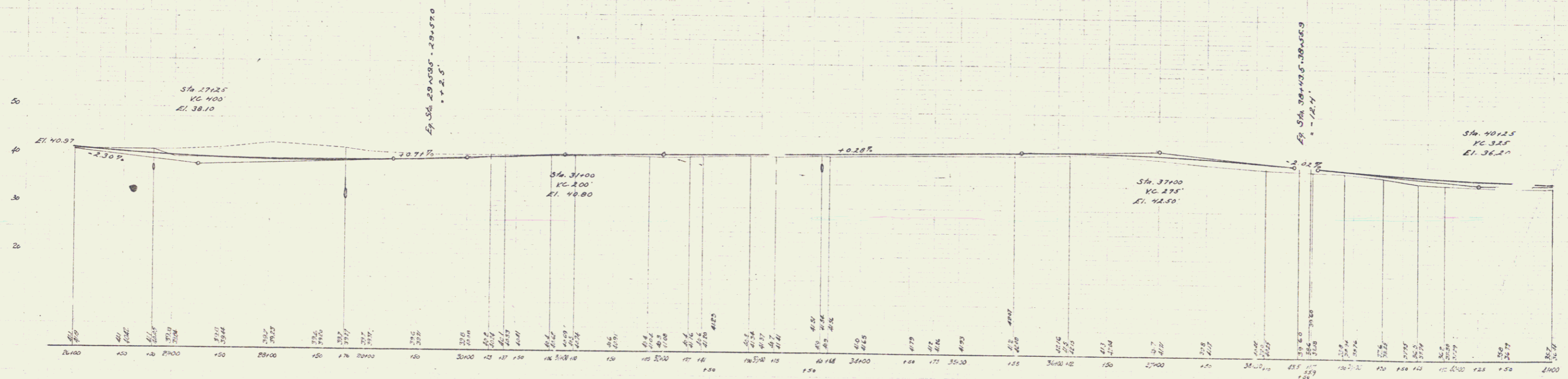
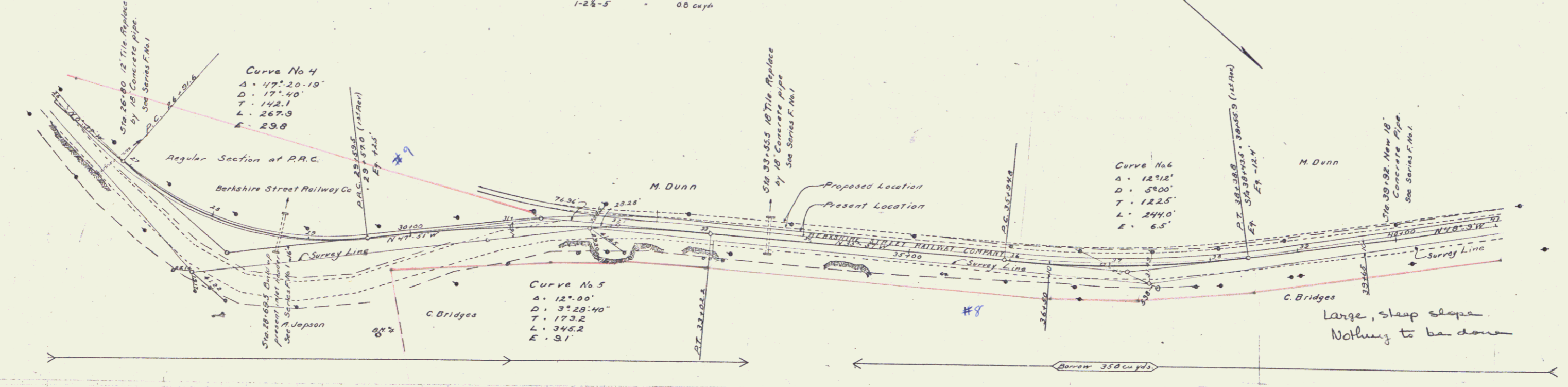
Sta 26+20 to Sta 30+52	432 ft
------------------------	--------

TOTAL THIS SHEET 720 ft

NEW CULVERTS REQUIRED

Sta 26+00	18" Concrete pipe 32ft
1-24-5	Concrete 15 cu yd
28+69.51-24-5	0.5 "
33+53.5	18" pipe 48ft
1-24-5	0.8 cu yd
39+92	18" pipe 44ft
1-24-5	0.8 cu yd

Project	State	Scale	Year	Sheet	Of
9	Vt.	1" = 20'	1917	5	11



BM # 2. Notch in 14 inch elm tree feet on right Sta 29+68 El. 46.91