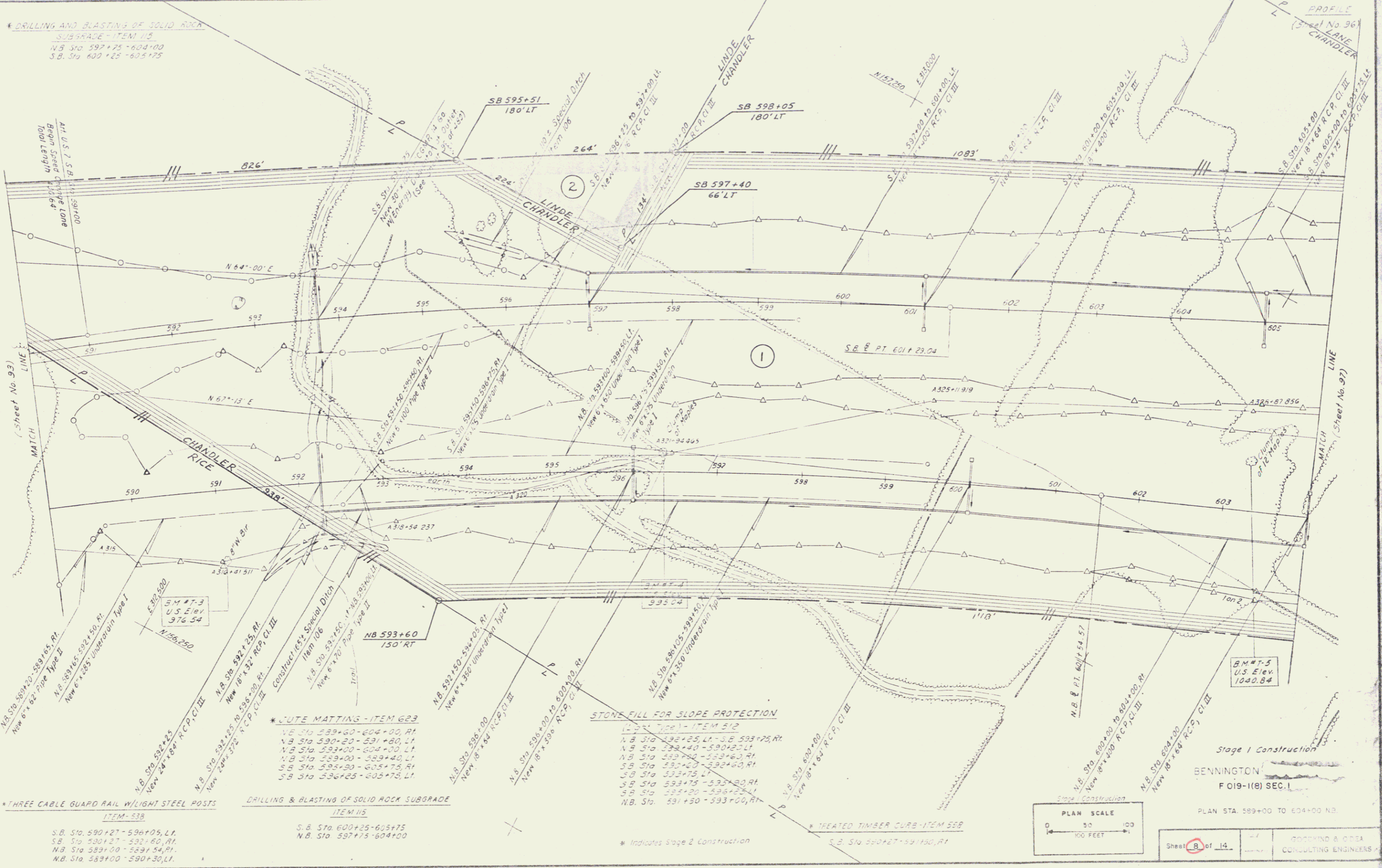


* DRILLING AND BLASTING OF SOLID ROCK SUBGRADE - ITEM 115
 N.B. Sta. 597+25 - 604+00
 S.B. Sta. 600+25 - 605+75

At U.S. S.B. Sta. 599+00
 Begin Steel Cable Lane
 Total Length 101.66'

(Sheet No. 93)
 MATCH

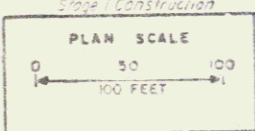
PROFILE
 No. 36
 LANE
 CHANDLER



* THREE CABLE GUARD RAIL W/LIGHT STEEL POSTS
 ITEM-538
 S.B. Sta. 590+27 - 596+05, L.I.
 S.B. Sta. 590+27 - 592+60, R.I.
 N.B. Sta. 589+00 - 589+54, R.I.
 N.B. Sta. 589+00 - 590+30, L.I.

DRILLING & BLASTING OF SOLID ROCK SUBGRADE
 ITEM-115
 S.B. Sta. 600+25 - 605+75
 N.B. Sta. 597+25 - 604+00

STONE FILL FOR SLOPE PROTECTION
 ITEM-512
 L.I. Sta. 592+25 - 593+75, R.I.
 N.B. Sta. 592+40 - 590+20, L.I.
 N.B. Sta. 593+00 - 593+60, R.I.
 S.B. Sta. 593+00 - 593+60, R.I.
 S.B. Sta. 593+75 - 593+20, R.I.
 S.B. Sta. 593+75 - 593+20, R.I.
 S.B. Sta. 593+75 - 593+20, R.I.



Stage I Construction
 BENNINGTON
 F 019-1(B) SEC. 1

PLAN STA. 589+00 TO 604+00 N.B.

Sheet 8 of 14
 BROWN & OSEA
 CONSULTING ENGINEERS

In Charge of
 Made by
 Checked by
 Drawn by

6