

* SITE MATTING ITEM 623
Sta 456+00 to 465+25, N.B. Rt.
Sta 456+00 to 465+25, S.B. Lt.
Sta 456+00 to 465+25, Median

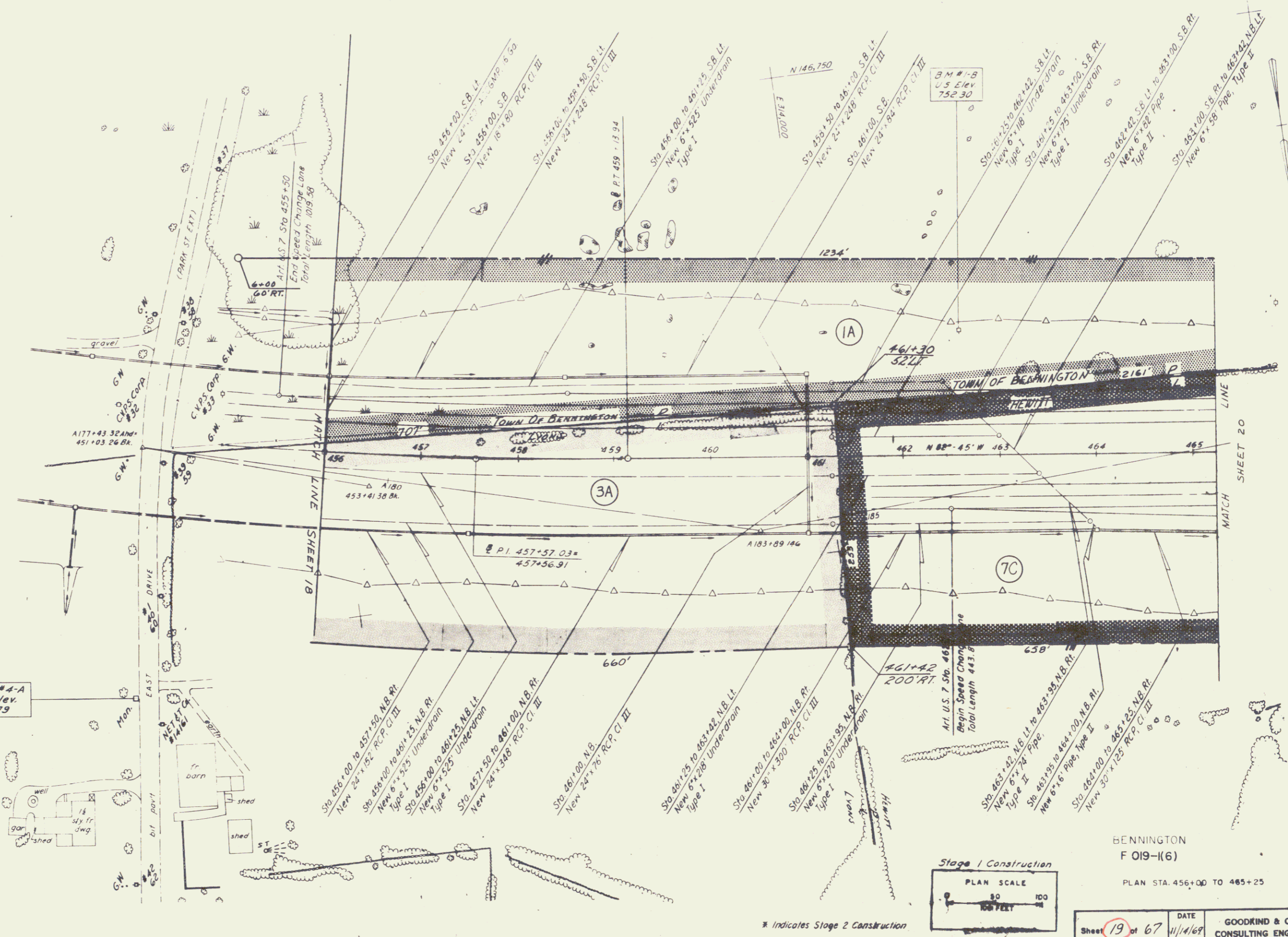
GRADE FILL FOR SORE PROTECTION
Item 512
Sta 456+00 to 465+25

DRILLING AND BLASTING OF SOLID ROCK
SUBGRADE ITEM 115
Sta 458+75 to 459+75, S.B.
Sta 463+75 to 465+25, S.B.
Sta 463+75 to 465+25, N.B.

MAINLINE CURVE DATA

Δ	3°-55'-27" LI
D	17'-15"-08"
R	4583.66'
T	157.03'
L	313.94'
E	2.63'
Bench Pt.	N 147° 10' 4.38"
	E 314.359.13

Checked by: A.J.P.
Drawn by: H.R.E.S.T.
Traced by: G.R.E.M.
Checked by: S.Y.F.M.B.



BENNINGTON
F 019-(16)
PLAN STA. 456+00 TO 465+25

Sheet 19 of 67 DATE 11/14/69
GOODKIND & O'DEA
CONSULTING ENGINEERS