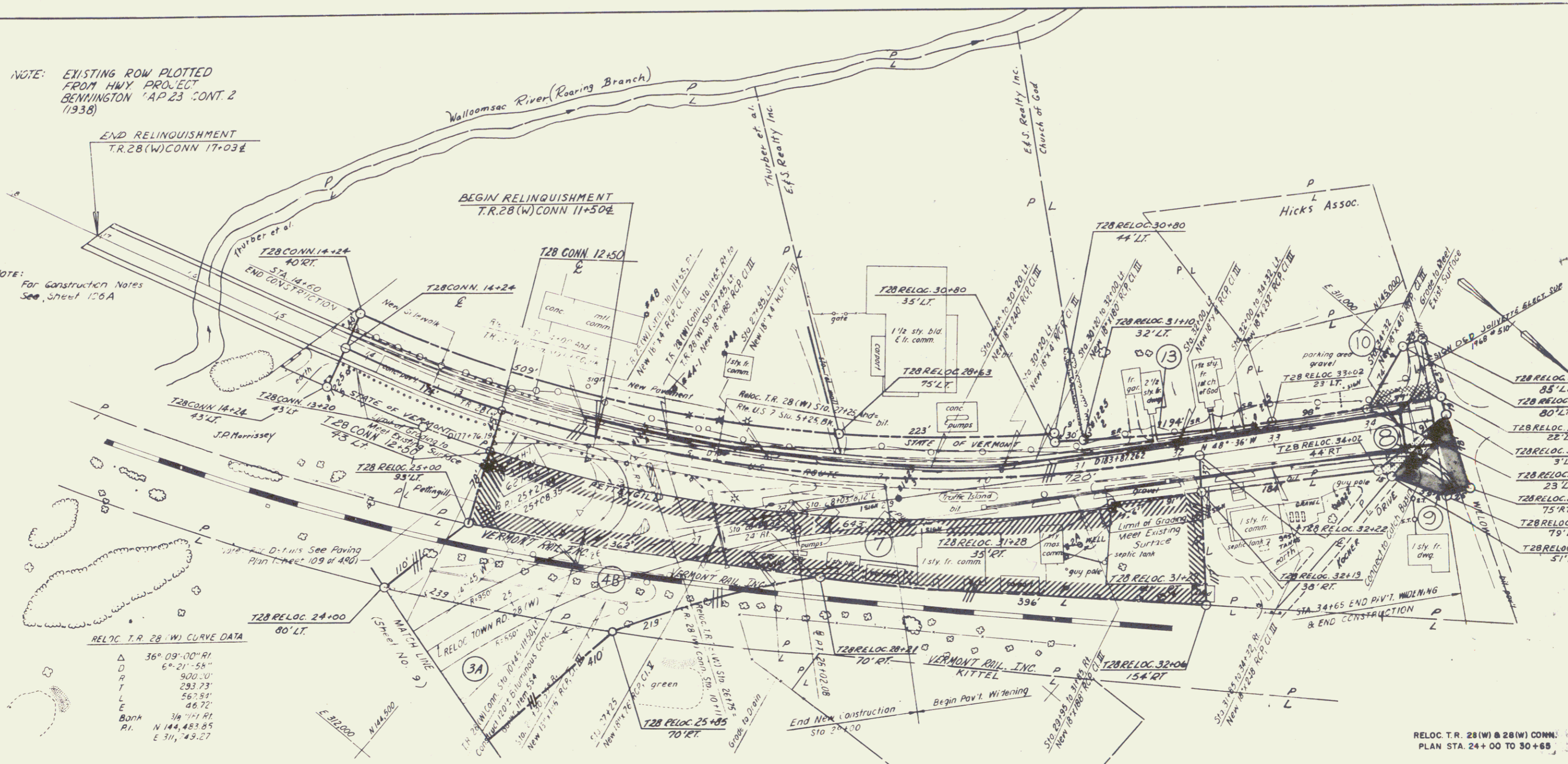


NOTE: EXISTING ROW PLOTTED FROM HWY PROJECT BENNINGTON 'AP.23 CONT. 2 (1938)

NOTE: For Construction Notes See Sheet 126A



RELOC. T.R. 28(W) CURVE DATA

Δ	36° 09' 00" RI
D	6° 21' 54"
R	900.00'
T	293.73'
L	56.789'
E	66.72'
BDOP	36° 11' RI
PI	N 144,483.85
	E 311,749.27

- 3A CHARLES M. WILKINSON
- 4B STATE OF VERMONT (LESSOR)  
RUTLAND RAILROAD CORP (LESSEE)
- 7 NED H. PETTENGILL
- 8 NORTHERN TERMINALS INC.
- 9 HOWARD W. & AUXILLIA W. MOORE
- 10 CHARLESTOWN MILL STORE (LESSEE)

BENNINGTON  
F 219-(17)

Sheet 11 of 17