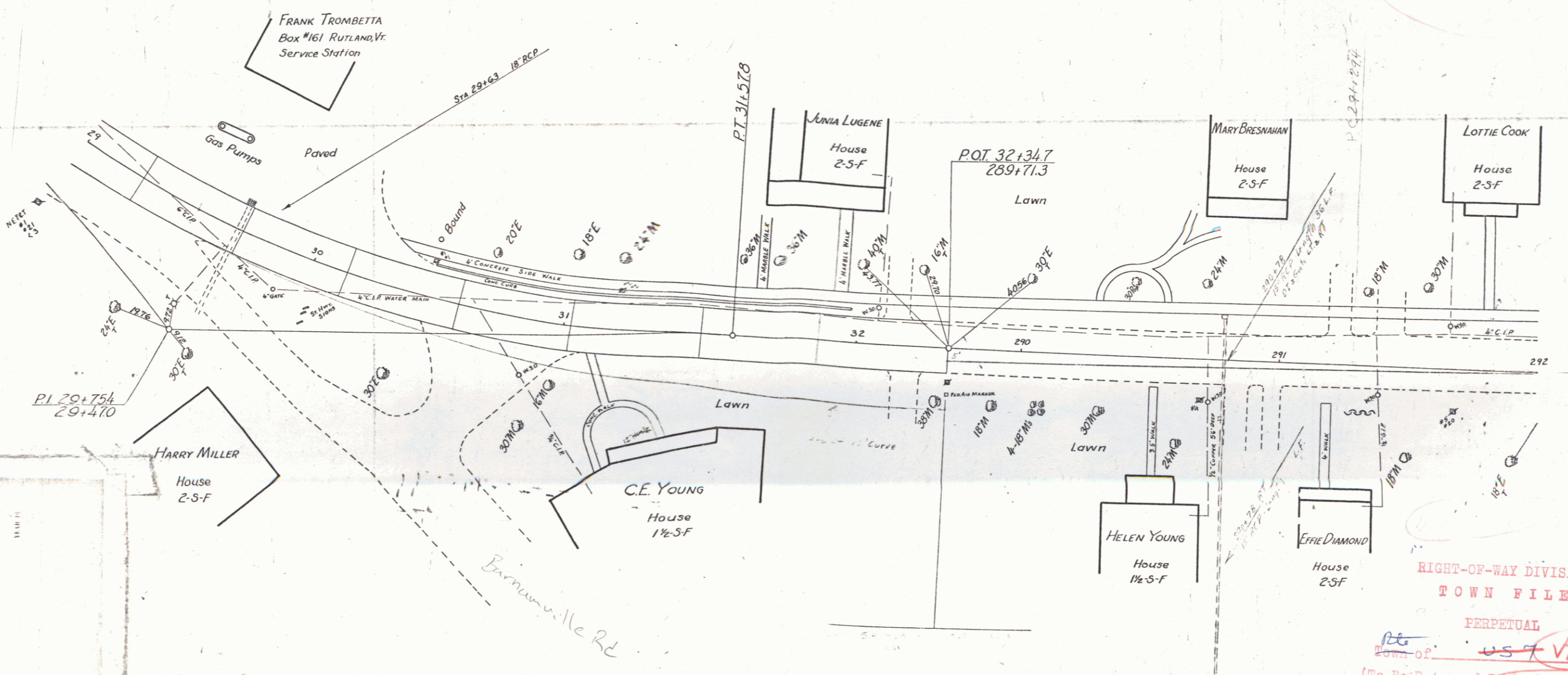


Town of Manchester
 P.A. # 998513
 Route VT7A
 Proj F 92M
 01/01/1940

P.A. # 998513
 01/01/1940

STA 29+37 MP 5.296
 STA 32+00 MP 6.141
 STA 41+00 MP 7.694
 STA 43+03 MP 8.075

Δ 51° 07' L
 P 44.17
 L 240.8
 L 509.3
 E 4.78



RIGHT-OF-WAY DIVISION
 TOWN FILE
 PERPETUAL
 Town of VT 7A
 (To Be Returned To R.O.W. Division)
F 92M

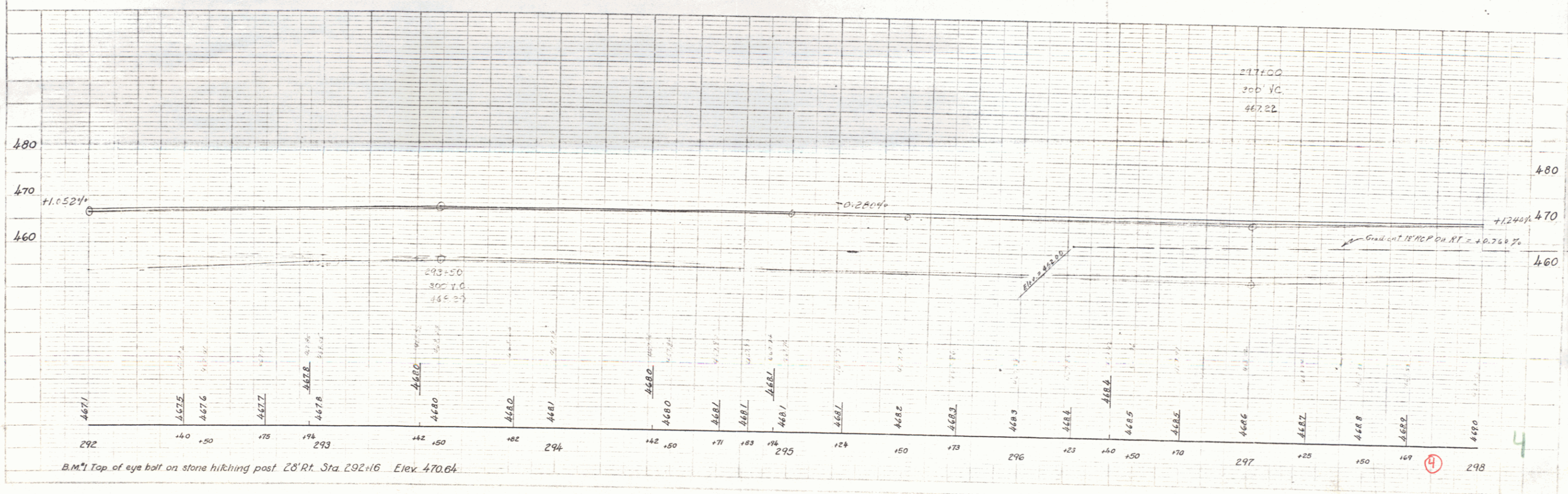
ESTIMATED QUANTITIES	

Surveyed by
 Designed by Manchester
 Drawn by
 Traced by
 Checked by
 Series No. 1 Filed
 Sheet 1 of 1 Sheets

DIST. # 1 PLANS

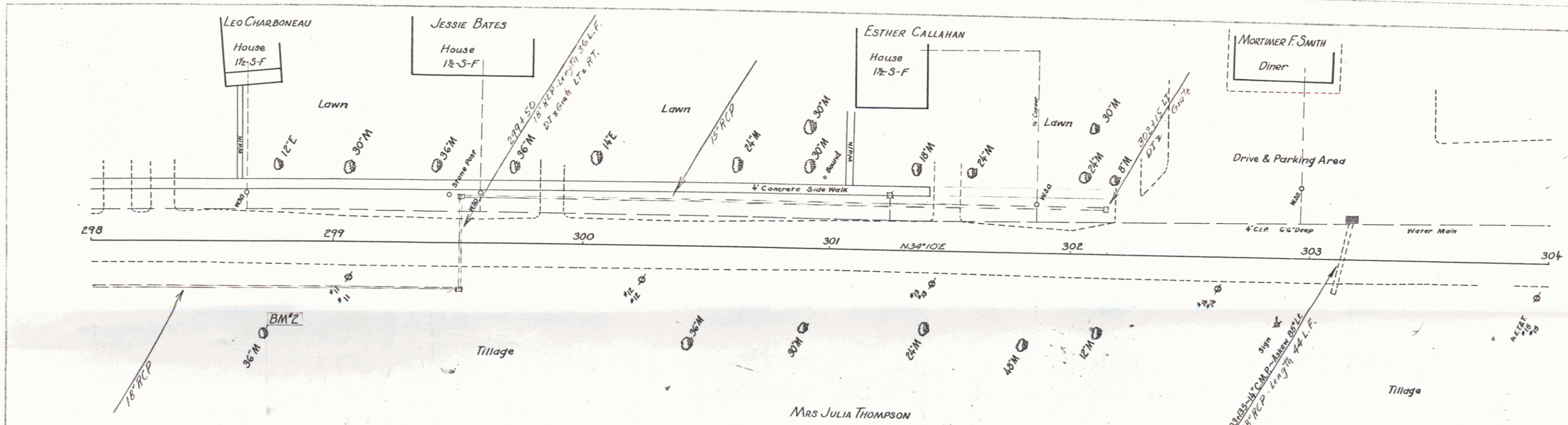
PLAN
 DATE
 SHEET NO.
 PROJECT NO.
 DRAWN BY
 CHECKED BY

DATE
 SHEET NO.
 PROJECT NO.
 DRAWN BY
 CHECKED BY

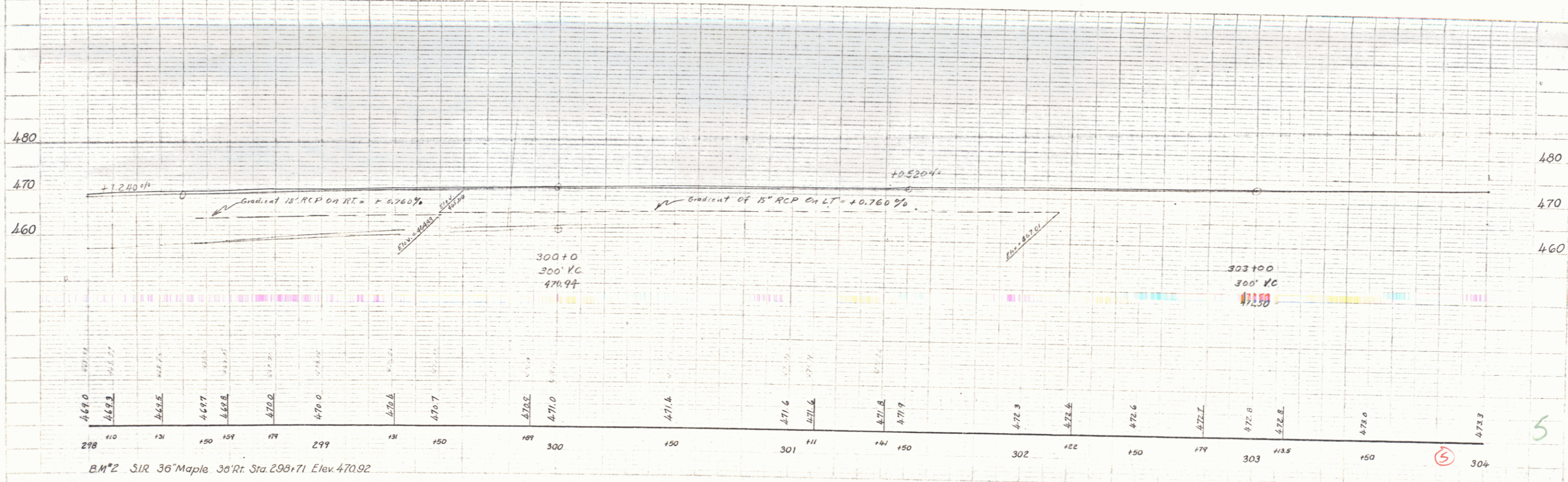


4

PLAN
 1/4" = 1'-0"
 BROWNELL
 1924



PLAN
 1/4" = 1'-0"
 BROWNELL
 1924

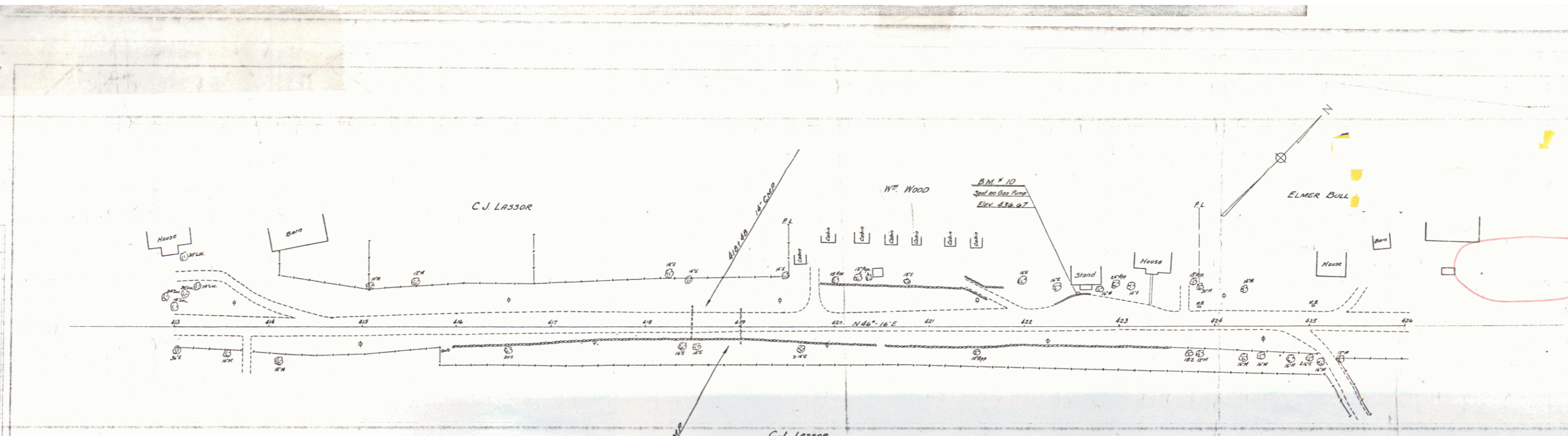


BM*Z S.I.R. 36' Maple 30' Rt. Sta. 298+71 Elev. 470.92

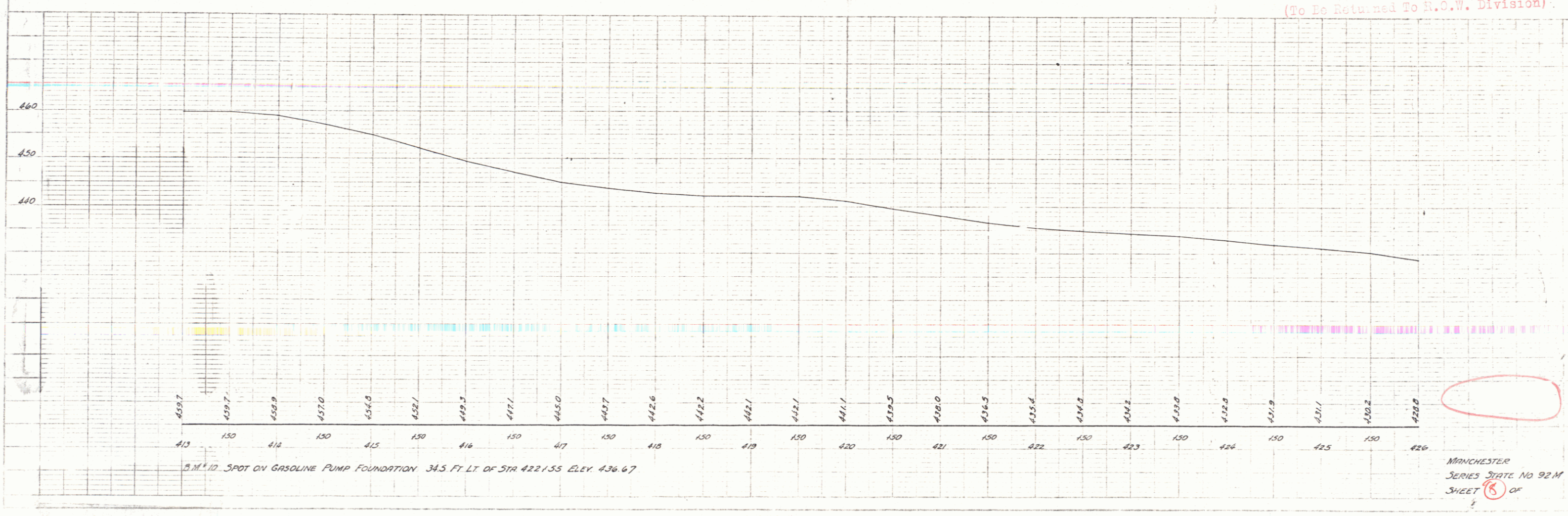
5

PLAN
 DATE
 DRAWN BY
 CHECKED BY
 TITLE

MANCHESTER
 SERIES STATE NO 92M
 SHEET 8 OF 8



RIGHT-OF-WAY DIVISION
 TOWN FILE
 PERPETUAL
 Pte of VK: 7A
 (To Be Returned To R.O.W. Division)



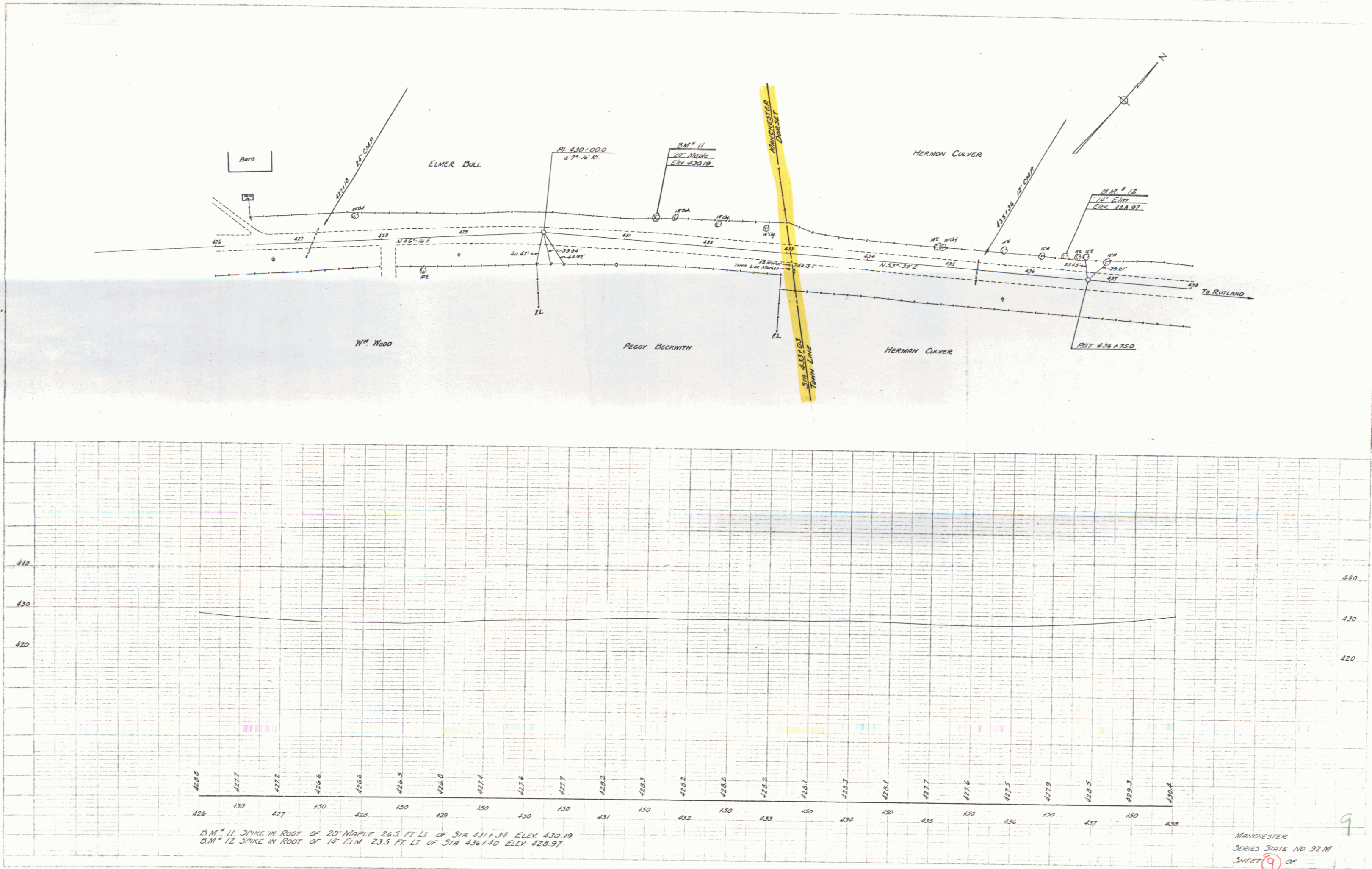
B.M. # 10 SPOT ON GASOLINE PUMP FOUNDATION 34.5 FT. LI. OF STA. 422+55 ELEV. 436.67

MANCHESTER
 SERIES STATE NO 92M
 SHEET 8 OF 8

DIST. #1 PLANS

PLAN
 DATE: Jan 16
 DRAWN BY: [illegible]
 CHECKED BY: [illegible]
 SCALE: AS SHOWN
 PROJECT: [illegible]

PLAN
 DATE: Jan 16
 DRAWN BY: [illegible]
 CHECKED BY: [illegible]
 SCALE: AS SHOWN
 PROJECT: [illegible]



B.M. 11 SPIKE IN ROOT OF 20" MAPLE 26.5 FT LT OF STA 431+34 ELEV. 430.19
 B.M. 12 SPIKE IN ROOT OF 14" ELM 23.5 FT LT OF STA 436+40 ELEV. 428.97

MANCHESTER
 SERIES STATE NO 92.M
 SHEET 9 OF 9