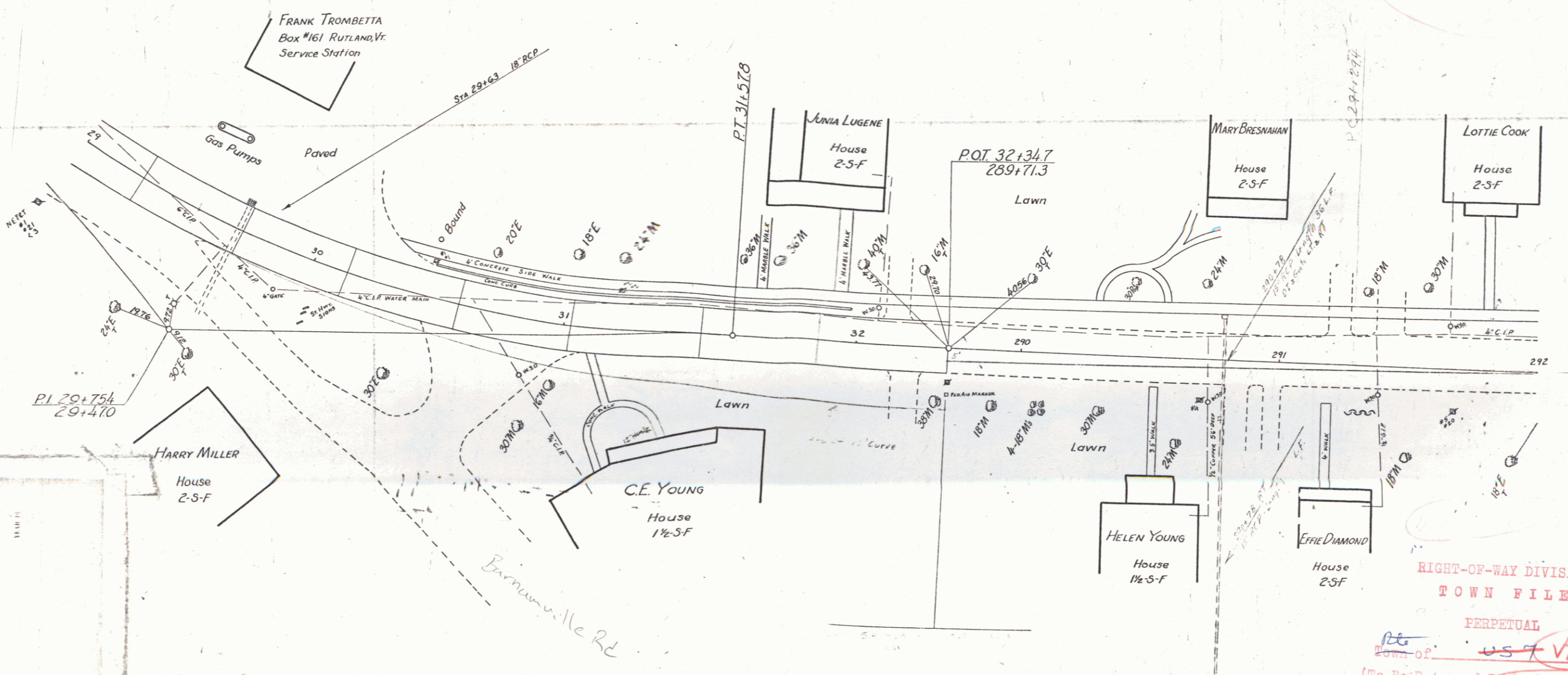


Town of Manchester  
 P.A. # 998513  
 Route VT 7A  
 Proj F 92M  
 01/01/1940

P.A. # 998513  
 01/01/1940

STA 29+37  
 MP 5.296  
 STA 32+00  
 MP 6.141  
 STA 413+00  
 MP 7.694  
 STA 453+03  
 MP 9.075

Δ 51° 07' L  
 P 44.17  
 L 240.8  
 L 509.3  
 E 4.78



RIGHT-OF-WAY DIVISION  
 TOWN FILE  
 PERPETUAL  
 Town of VT 7A  
 (To Be Returned To R.O.W. Division)  
F 92M

ESTIMATED QUANTITIES


Surveyed by  
 Designed by Manchester  
 Drawn by  
 Traced by  
 Checked by  
 Series No. 1 Filed  
 Sheet 1 of 1 Sheets

DIST. # 1 PLANS