

Three Cable Guard Rail w/ Steel Posts
Item 543 Rt.
264+00-266+78.266+17-266+19
269+41-273+40 269+40-273+40
269+41-273+40 269+40-273+40

Metal Bin-Type Retaining Wall
Item 592
For details refer to sheets
BR 202 - 212, 213,
BR 221 thru 234

Excavation and Removal of Road
Surface on Roadways, Item 115-A
264+00-266+80 Lt.
Seeding, Item 611
Topsoil, Item 621
Comm. Fert. for Grasses, Item 615
275+05 - 276+00 Lt.
Island
271+97 - 276+00

Granite Curb, Item 556-B
273+25 - 276+00 Lt.
Forests & Parks Road
7+00 Rct Constr. Drive
STATE OF VERMONT
FORESTS & PARKS

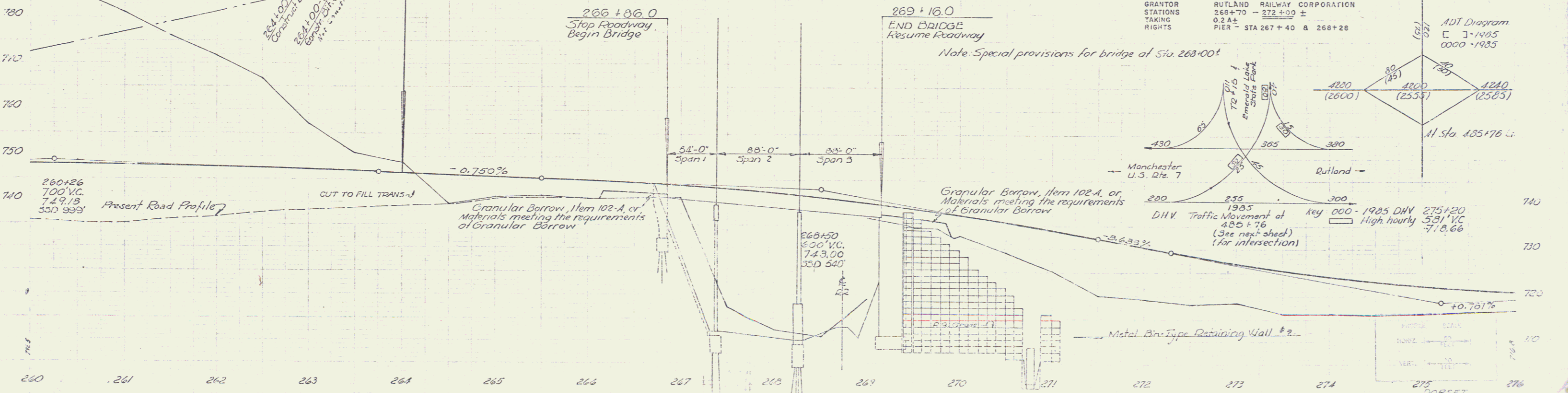
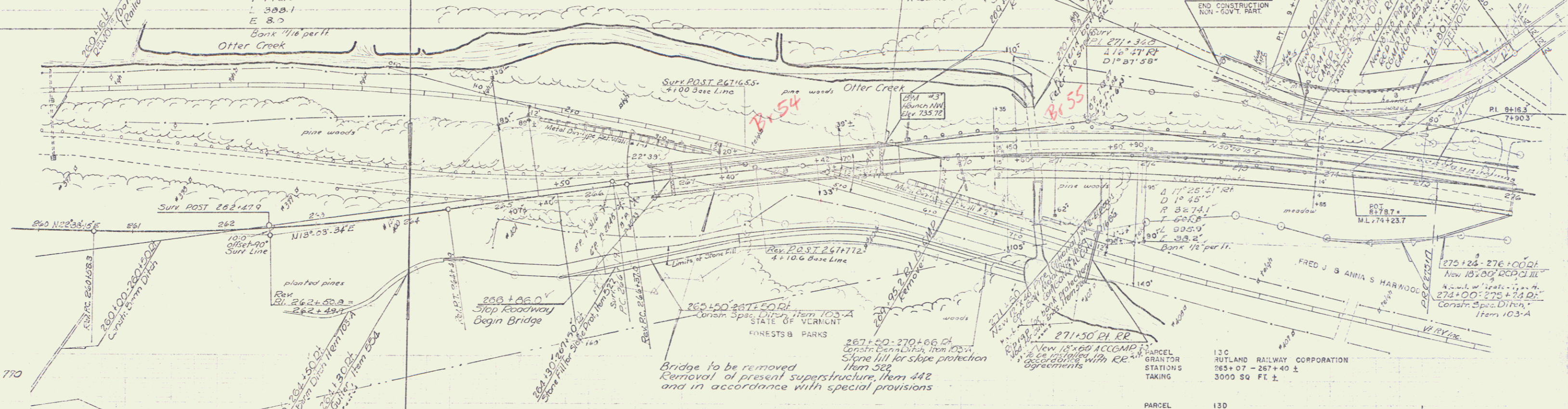
Treated Timber Curb, Item 558
269+41 - 271+52 Rt.
Unclassified Channel Excav Item 100-C
268+00 Lt. - 270+00 Lt.
R.R. 270+00 - 271+00 Lt.
3+21a - 1+31a Lt.

GRANITE SLOPE EDGING, ITEM 556-A
271+95 - 276+00 1/2 Island

Rev. Curve Data
Δ 9°34'21" Lt.
D 2°30'
R 2291.8
T 192.0
L 388.1
E 8.7

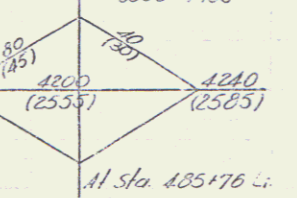
PARCEL 158
STATIONS 270+60 - 434+99 ±
TAKING 0.84 ±

TOWN (CEMETERY)



PARCEL GRANITOR STATIONS TAKING RIGHTS
130 RUTLAND RAILWAY CORPORATION
265+07 - 267+40 ±
3000 SQ. FT. ±

ADT Diagram
C 1-1985
0000-1985



Key 000-1985 DHW 275+20
480 ± 76
High hourly 718.66
(for intersection)

275 DORSET
770
Sheet 9 of 100
CONTRACT #2