

GUARD RAIL REQUIRED

ON LEFT

Sta 708+16 to Sta 708+40	Length 24'	
717+11	717+35	24'
719+20	720+40	20'

ON RIGHT

708+24 to Sta 708+72	48'	
716+50	717+84	34'

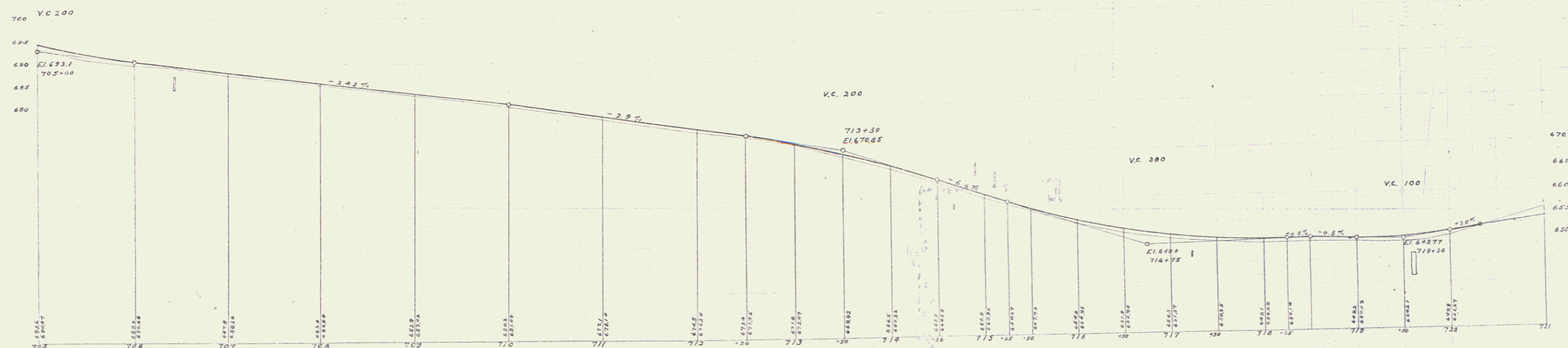
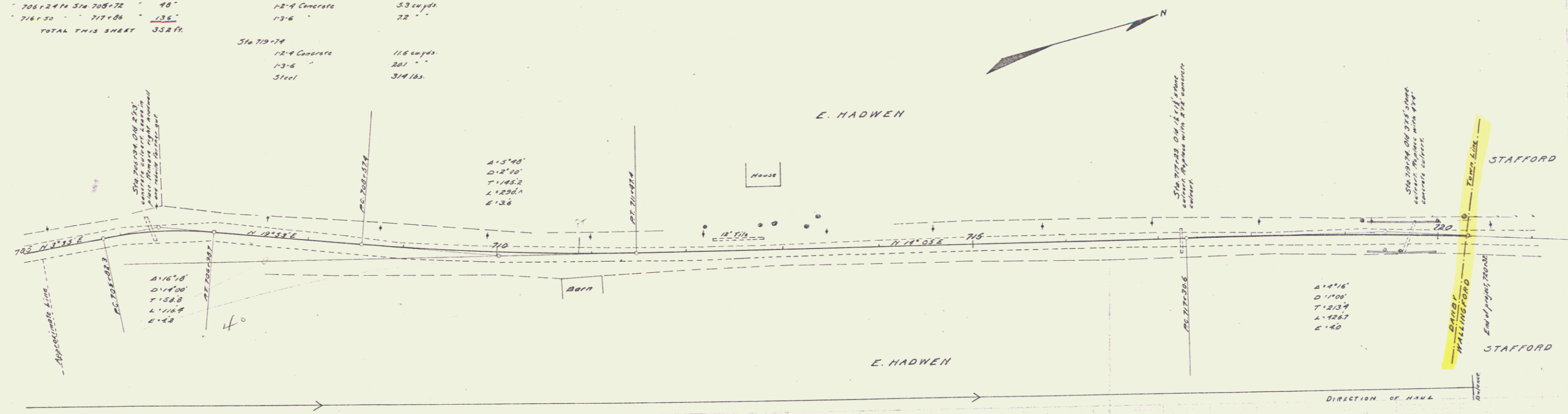
TOTAL THIS SHEET 352 FT.

CULVERT REPAIRS REQUIRED

Sta 708+34	12-6 Concrete	03 cu yds.
Sta 717+23	12-4 Concrete	53 cu yds.
	13-6	22
Sta 719+74	12-4 Concrete	116 cu yds.
	13-6	201
	Steel	314 lbs.

STONE BASE REQUIRED
1350 linear feet where needed

PROJECT	STATE	FED. AID	ISSUED SHEET	TOTAL SHEETS
DIST. NO.	YEAR	NO.	NO.	
8	VF	12	1018-M-49	123



B.K. Top of 5th corner of headwall right of 706+33, Elev. 692.03
 B.X. Top of stone post at junction of road and meadow fences left of 7174, Elev. 654.89
 B.K. Spots in dirt right of 720+28, Elev. 651.87

Checked by [Signature]