

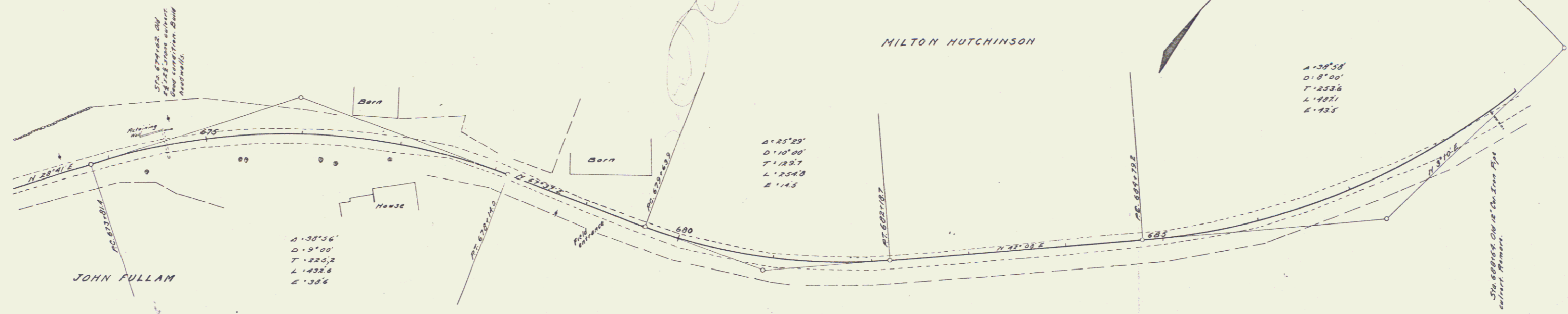
GUARD RAIL REQUIRED  
ON LEFT  
Sta 673+70 to Sta 674+74 Length 38 ft  
ON RIGHT  
674+50 to Sta 674+74 24'  
TOTAL THIS SHEET 120 ft

CULVERT REPAIRS REQUIRED  
Sta 674+62  
13" Concrete 31 cu yds

LEACHING BASIN REQUIRED  
ON LEFT  
Sta 680+30

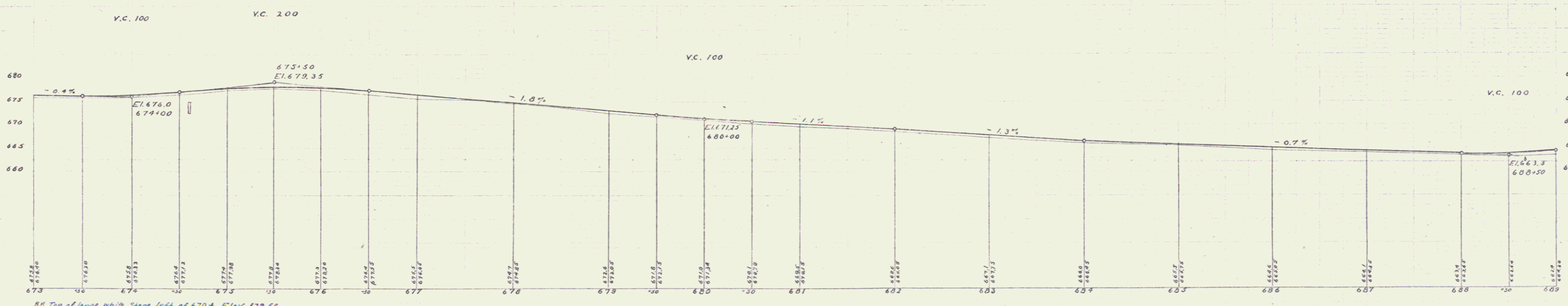
NO. ROAD DIST. IN	STATION	FOOTING	VEGETATION	NO.	TOTAL SHEETS
1	VT	12	10-11-12	47	133

W. S. Gifford  
Civil Eng.



Borrow 200 cu yds. Borrow 163 cu yds along left ditch

W. S. Gifford  
Civil Eng.



B.M. Top of large white Stone left of 679+4, Elev. 672.66

Scale 1" = 40' HORIZ  
1" = 10' VERT