

**GUARD RAIL REQUIRED ON LEFT**

Sta 662+12 to Sta 662+36 Length 24 ft

662+12	662+30	18'
662+16	662+30	14'
662+100	Sta 662+27	17'
662+102	662+30	18'
662+106	662+30	24'
662+12	662+36	24'

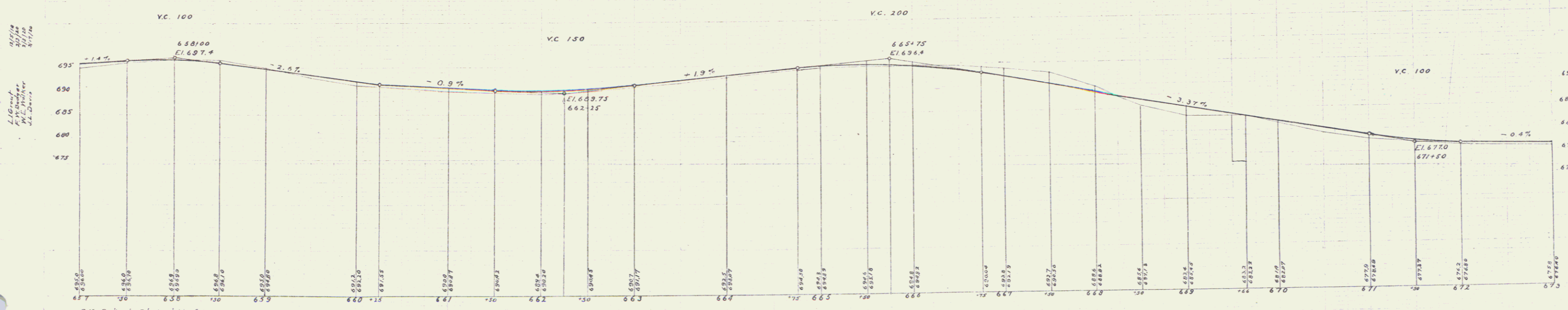
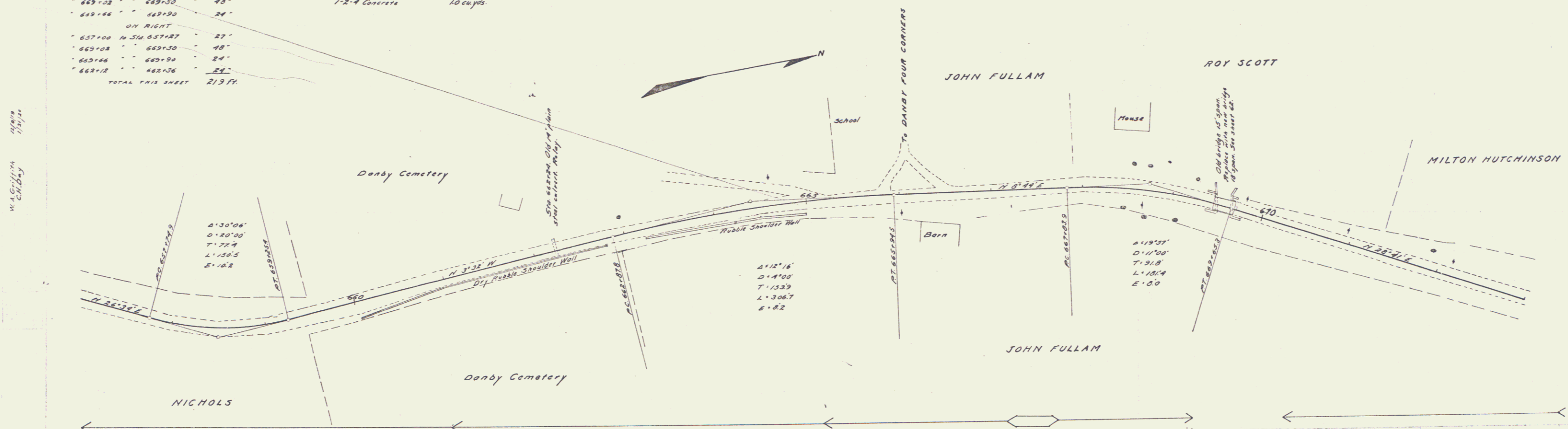
TOTAL THIS SHEET 213 FT

**CULVERT REPAIRS REQUIRED**

Sta 662+29

1'-2'-4" Concrete 10 cu yds.

FED. ROAD DIST. NO.	STATE	FED. AID PROJ. NO.	FISCAL YEAR	SHEET NO.	TOTAL SHEETS
2	VT.	12	1918-19	46	133



B.M. Spike in Ditch right of 659+41, Elev 694.67  
 B.M. N.E. corner S. Abutment right of 660+50, Elev 682.66

Survey of 1918, Filed  
 1921