

GUARD RAIL REQUIRED

ON LEFT
 Sta 646+50 to Sta 647+74 Length 24 ft
 - 646+54 - 647+10 - 24'
 - 651+88 - 652+18 - 24'
 ON RIGHT
 - 644+62 to Sta 645+70 - 408'
 - 650+70 - 651+26 - 36'
 - 651+88 - 652+08 - 100'

CULVERT REPAIRS REQUIRED

Sta 645+68 12" Concrete 10 cu yds
 136' 6.8'

NEW CULVERTS REQUIRED

Sta 647+08 14" Cor Iron Pipe (Extending) 6 ft
 12" Concrete 0.5 cu yds
 Sta 652+00 14" Cor Iron Pipe 30 ft
 12" Concrete 1.0 cu yds

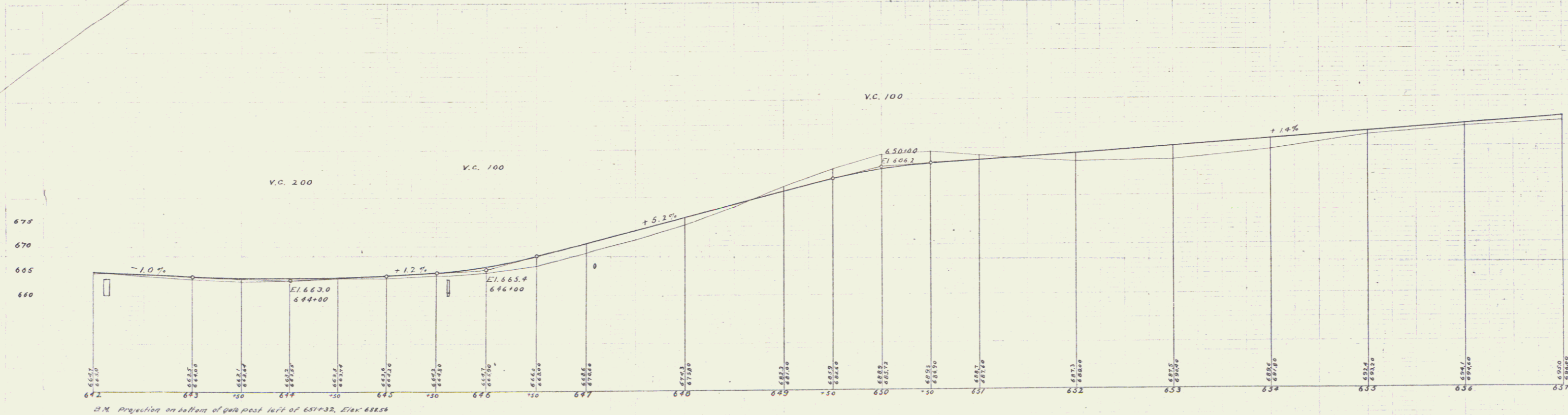
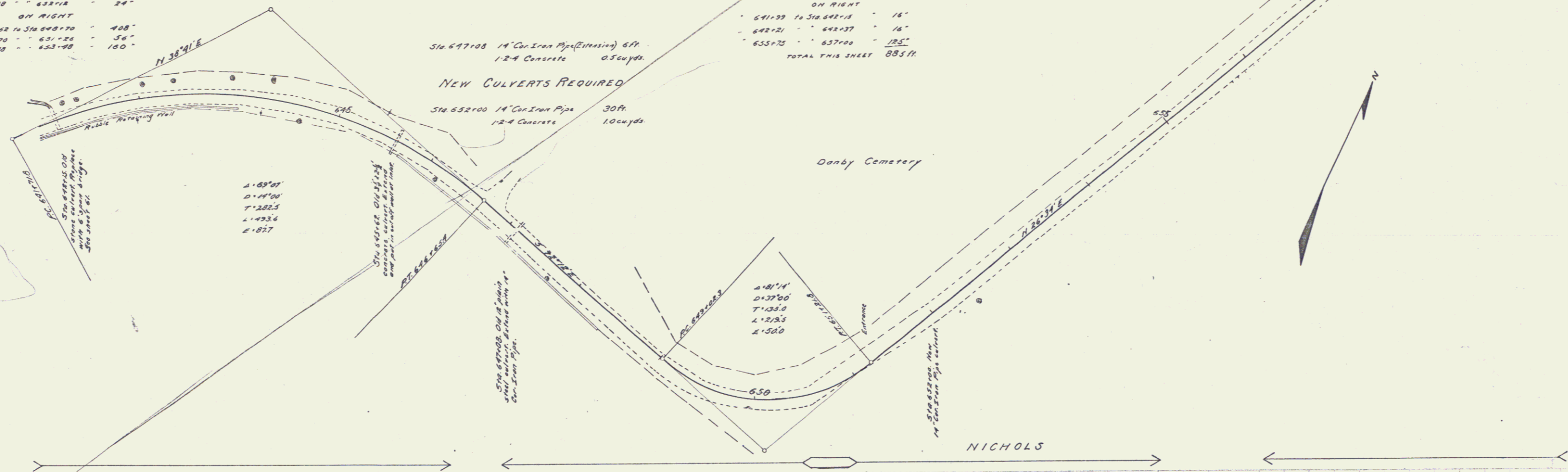
GUARD RAIL REQUIRED

ON LEFT
 Sta 641+99 to Sta 642+15 Length 16 ft
 - 642+21 - 642+37 - 16'
 ON RIGHT
 - 641+39 to Sta 642+15 - 16'
 - 642+21 - 642+37 - 16'
 - 655+75 - 657+00 - 125'
 TOTAL THIS SHEET 883 ft

FED. ROAD DIST. NO.	STATE	FED. AID PROJ. OR TECH. NO.	FISCAL YEAR	SHEET NO.	TOTAL SHEETS
8	VT	12	1918-19	45	133

J.L. Davis, Civil Engr. 1919

J.L. Davis, Civil Engr. 1919



2.5' Projection on bottom of grid post left of 657+32, Elev. 682.56

Drawn by F. [unclear] 1/133