

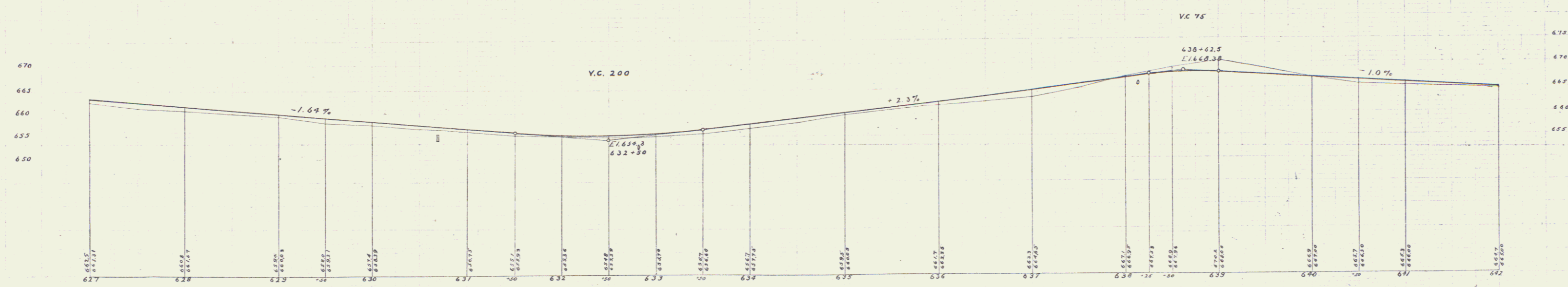
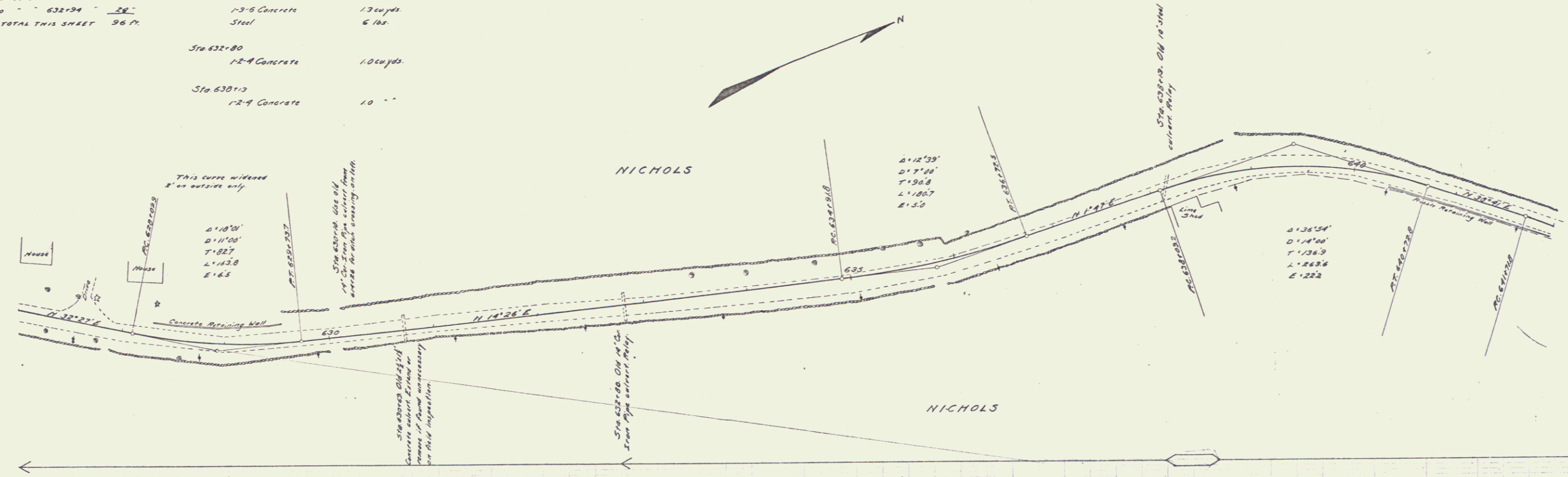
GUARD RAIL REQUIRED
 ON LEFT
 Sta 630+57 to Sta 630+81 Length 24 ft
 632+70 - 632+94 - 24'
 ON RIGHT
 630+57 to Sta 630+81 - 24'
 632+70 - 632+94 - 24'
 TOTAL THIS SHEET 96 ft

CULVERT REPAIRS REQUIRED
 Sta 630+10 12-4 Concrete 10 cu yds
 Sta 630+59 12-8 Concrete 13 cu yds
 Steel 6 lbs.
 Sta 632+80 12-4 Concrete 10 cu yds
 Sta 630+13 12-4 Concrete 10 "

FED. ROAD DIST. NO.	STATE	FED. AID PROJ. NO.	FISCAL YEAR	SHEET NO.	TOTAL SHEETS
8	VT	12	1954	44	103

J.L. Davis
 J.E. Bower
 11/21/54
 11/21/54

J.L. Davis
 J.E. Bower
 11/21/54
 11/21/54



D.M. Top of Stone Gula Post. Right of 432+24. Elev. 652.67
 D.M. S.W. Corner of large stone right of 438+00. Elev. 643.07

Drawing by J.L. Davis
 11/21/54