

**GUARD RAIL REQUIRED**

ON LEFT

Sta. 614+10 to Sta. 614+30	Length 20 ft	
621+19	621+43	24'
624+26	625+00	24'

ON RIGHT

613+50 to Sta. 615+02	152'	
621+19	621+43	24'
624+26	625+00	24'

TOTAL THIS SHEET 272'

**CULVERT REPAIR REQUIRED**

Sta. 614+26	12" Con. Iron Pipe	36 ft
	12-4 Concrete	10 cu yds.

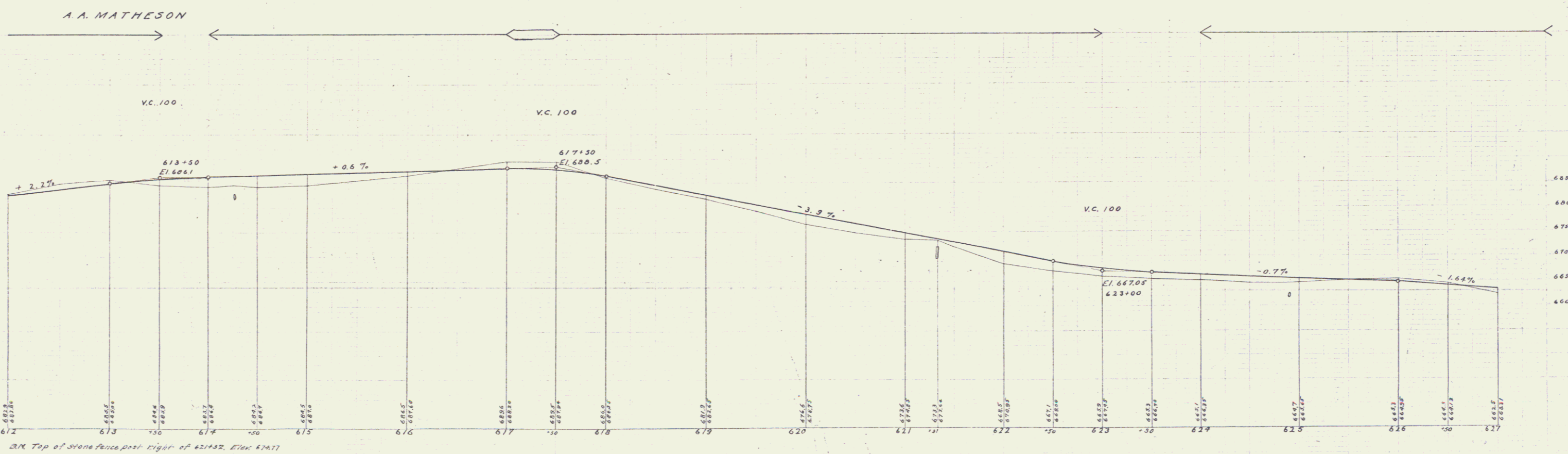
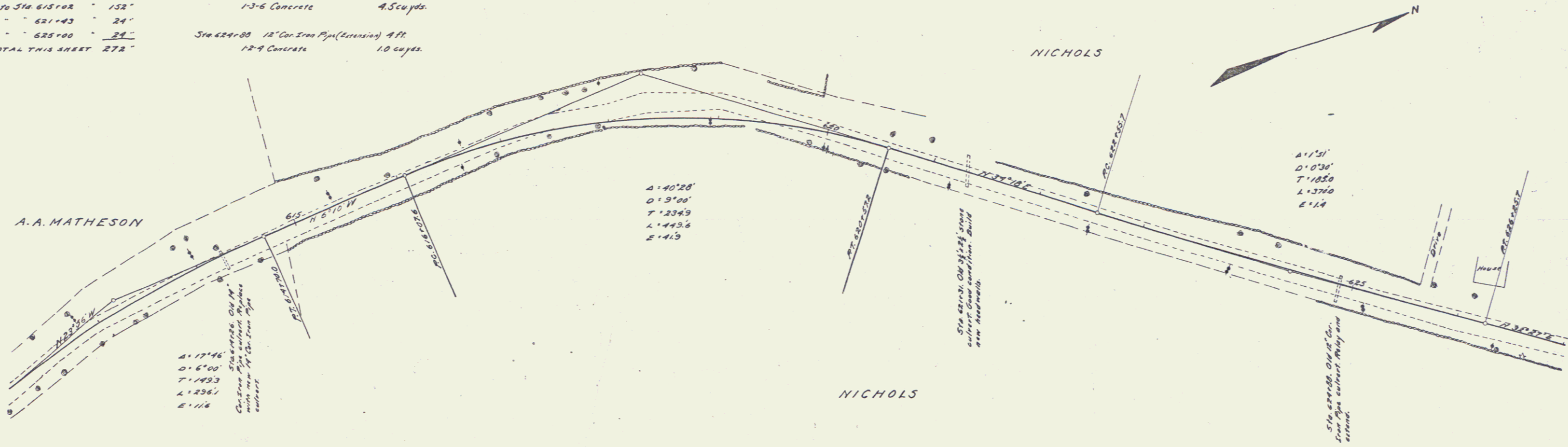
Sta. 621+31	12-6 Concrete	4.5 cu yds.
-------------	---------------	-------------

Sta. 624+26	12" Con. Iron Pipe (Extending 4 ft)	
	12-4 Concrete	10 cu yds.

**CONCRETE RETAINING WALL REQUIRED**

Sta. 625+70 to Sta. 626+70	12-6 Concrete	472 cu yds.
----------------------------	---------------	-------------

FED. PROJ. DIST. NO.	STATE	FED. AID PROJ. NO.	FISCAL YEAR	SHEET NO.	TOTAL SHEETS
0	VT	12	1962-63	42	133



J.L. Davis 1962  
J.L.S. and C. Davis 1962

J.L. Davis  
N.E. Walker  
J.L. Davis

Series 1 42 1962