

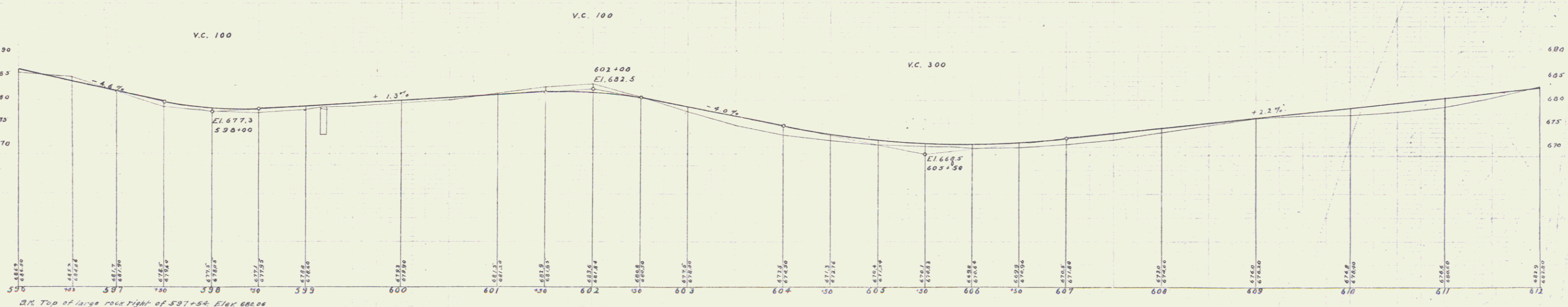
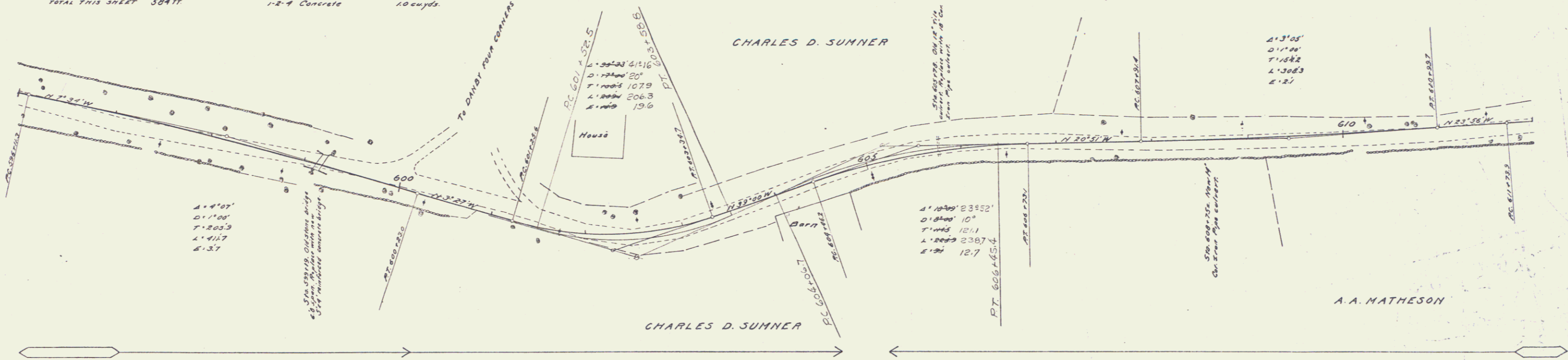
**GUARD RAIL REQUIRED ON LEFT**

Sta 599+07 to Sta 599+31 Length 24 ft
605+66 " " 605+90 " 24 "
ON RIGHT
598+75 to Sta 599+31 " 56 "
600+23 " " 602+25 " 202 "
605+14 " " 607+42 " 228 "
608+63 " " 608+87 " 24 "
ON LEFT
600+63 to Sta 608+87 " 24 "
TOTAL THIS SHEET 584 ft

**CULVERT REPAIRS REQUIRED**

Sta 599+19	12-4 Concrete	181 cu yds
	13-8 Steel	137 "
		255 lbs.
Sta 605+78	18" Cr. Iron Pipe	39 ft
	12-4 Concrete	15 cu yds.
Sta 608+75	14" Cr. Iron Pipe	26 ft
	12-4 Concrete	10 cu yds.

FED. ROAD DIST. NO.	STATE	FED. AID PROJ. NO.	FISCAL YEAR	SHEET NO.	TOTAL SHEETS
9	VT	12	1924	42	133



B.M. Top of large rock right of 597+54. Elev 682.06  
 B.M. Top of foundation at corner of barn right of 602+00. Elev 671.49

Series C. Filed  
 24th 1924