

**GUARD RAIL REQUIRED**

ON LEFT

Sta. 534100 to Sta. 534180 length 80 ft.
- 534160 - 534184 - 24'
- 542134 - 542118 - 24'
- 545181 - 545165 - 24'

ON RIGHT

- 534100 to Sta. 534177 - 77'
- 539160 - 539184 - 24'
- 542134 - 542118 - 24'
- 545181 - 545165 - 24'

TOTAL THIS SHEET 301 ft.

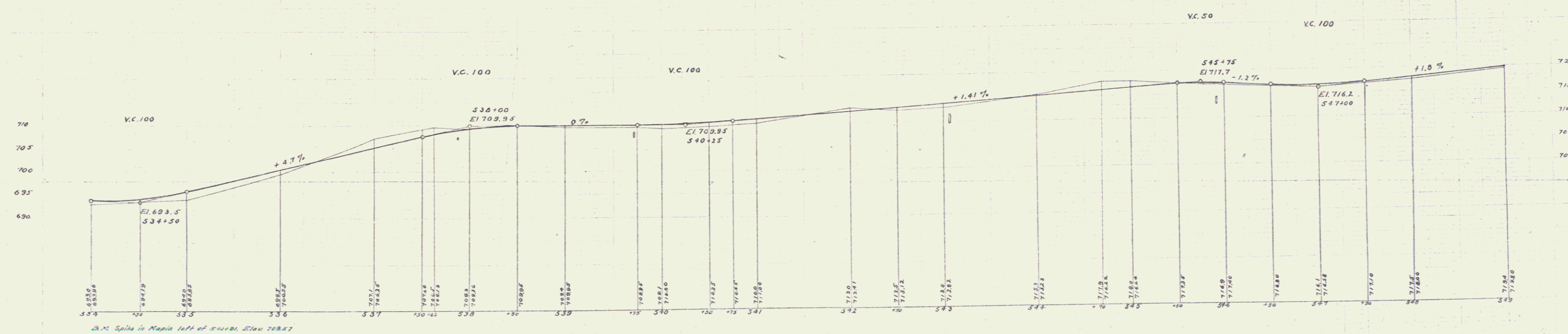
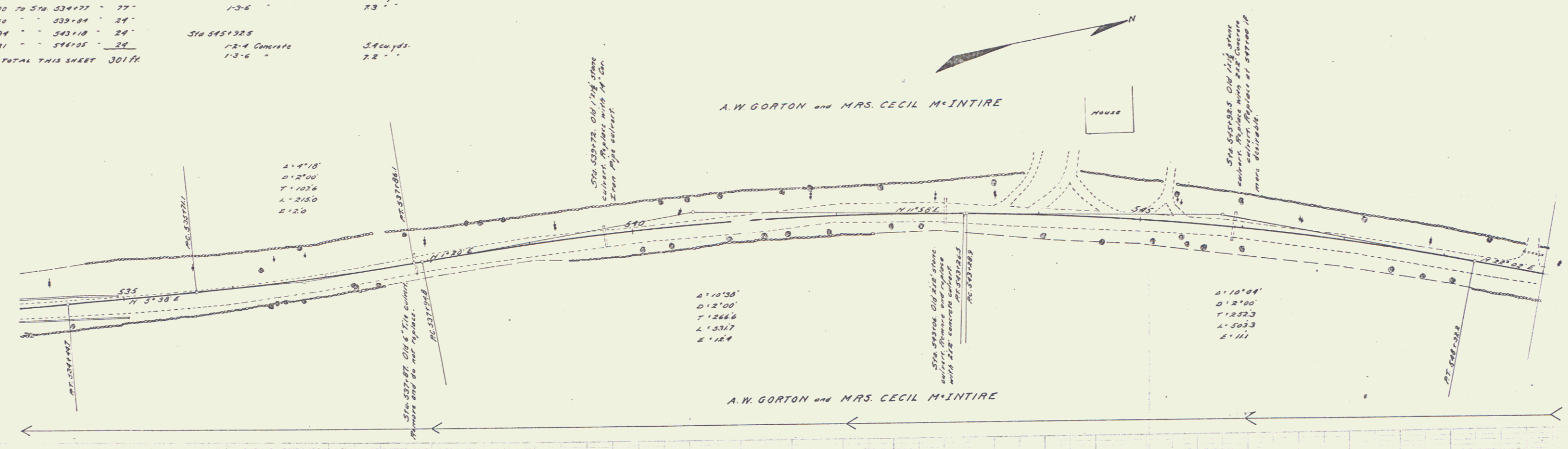
**CONCRETE REPAIRS REQUIRED**

Sta. 539172 14" Co. Iron Pipe 28 ft.
12" Concrete Handwalks 100 yds.
Sta. 543106 12" Concrete 3.50 yds.
13-6 " 73 "
Sta. 545128 12" Concrete 3.80 yds.
13-6 " 72 "

FED. ROAD DIST. NO.	STATE	FED. AID PROJ. NO.	FISCAL YEAR	SHEET NO.	TOTAL SHEETS
0	VT.	12	1944	38	133

J.L. Davis  
J.L.B. and C.P. By  
1944

J.L. Davis  
J.L.B. and C.P. By  
1944



Sta. Split in Middle left of sheet, Sta. 538.57

Scale: 1" = 20' Horiz  
1" = 10' Vert