

**GUARD RAIL REQUIRED**

ON LEFT

Sta 487+00 to Sta 487+20	Length 20 ft
487+20	24"
490+37	24"
494+88	184"
500+37	24"

ON RIGHT

* Sta 487+00 to Sta 488+00	100'
490+56	616"
500+37	24"

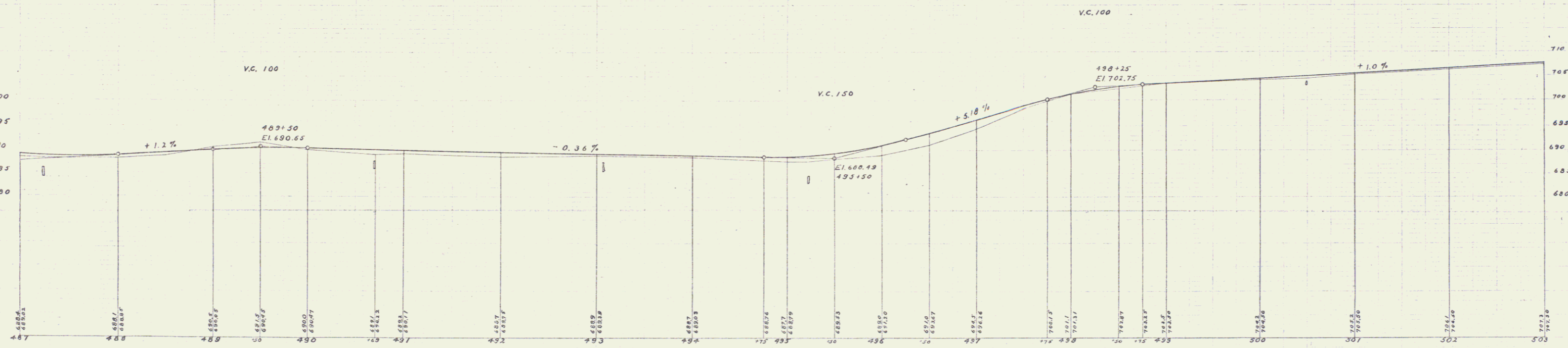
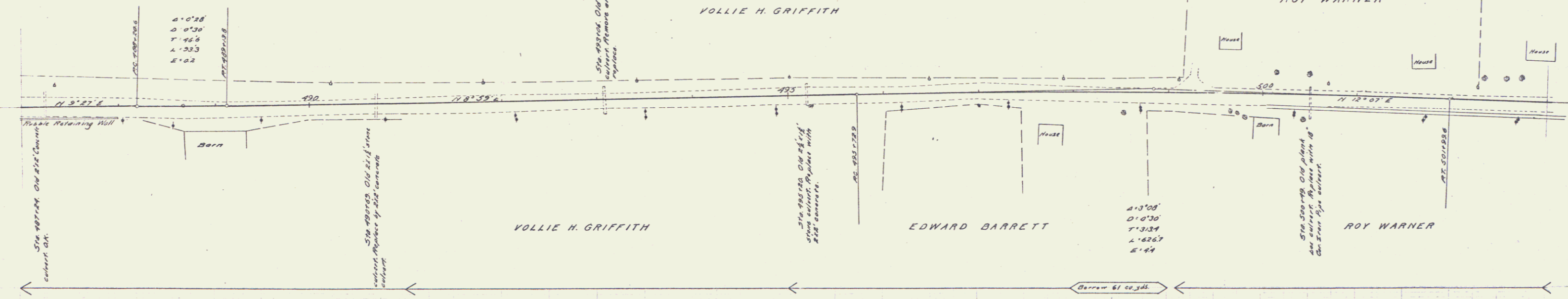
TOTAL THIS SHEET 1016 FT

**CULVERT REPAIRS REQUIRED**

Sta 490+69	1-2-4 Concrete	34 cu yds.
1-3-6		72 "
Sta 495+20	1-2-4 Concrete	3.8 cu yds.
1-3-6		76 "
Sta 500+49	18" Con. Iron Pipe	32 ft.
1-2-4 Concrete Headwalls		1.5 cu yds.

FED. ROAD DIST. NO.	STATE	FED. AID PROJ. NO.	YEAR	FINAL SHEET NO.	TOTAL SHEETS
8	VT	12	1918-21	35	133

J.L. Davis  
S.L.D. and City  
1918



D.M. S.W. corner of Headwall right of 487+20 Elev. 696.54  
B.X. Top of Foundation S.W. corner of barn right of 499+92 Elev. 703.66

Drawn by J.L. Davis  
Checked by S.L.D. and City  
1918