

GUARD RAIL REQUIRED

ON LEFT

Sta 472+00 to Sta 472+25	Length	25'
473+00	473+25	25'
484+20	484+44	24'
484+32	484+56	24'
486+34	487+00	66'

ON RIGHT

471+61 to Sta 472+25	64'	
473+69	473+93	24'
484+72	487+00	228'

TOTAL THIS SHEET 552 FT

CULVERT REPAIRS REQUIRED

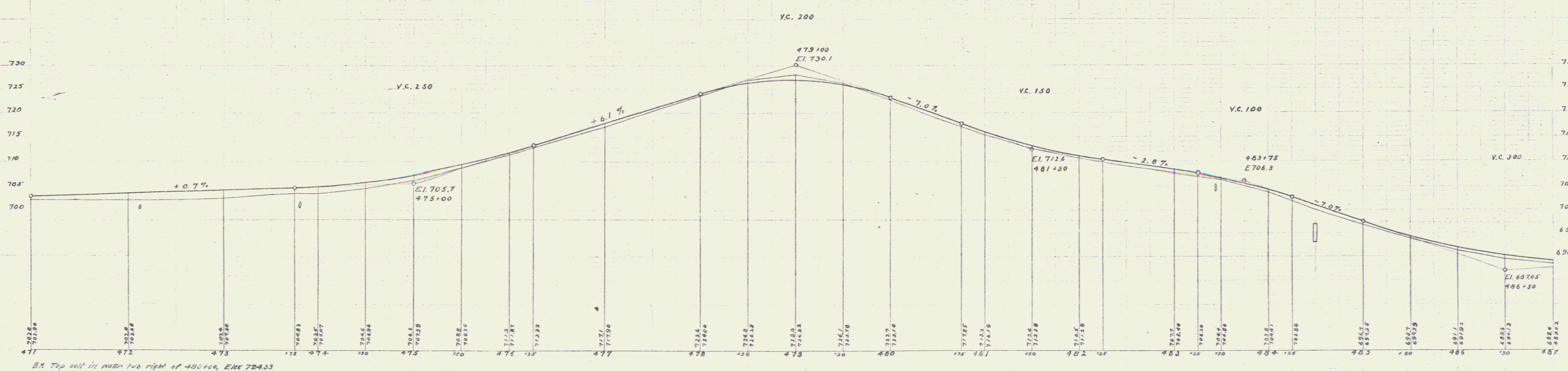
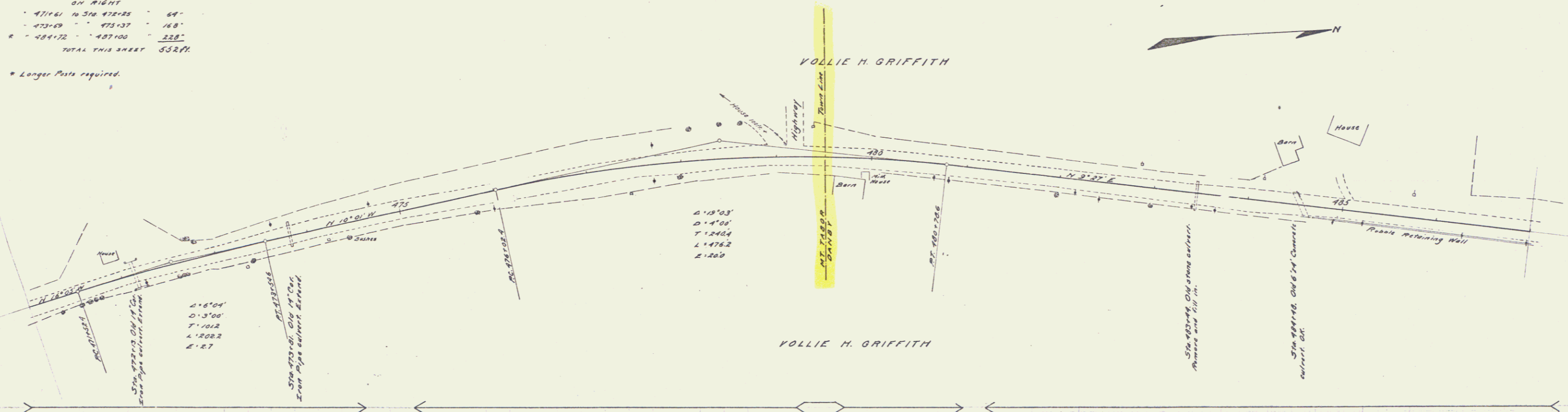
Sta 472+13	14" Concrete Pipe (Extending 8 ft)	12 cu yds.
	12" Concrete Headwalls	12 cu yds.
Sta 473+81	14" Concrete Pipe (Extending 6 ft)	15 cu yds.
	12" Concrete Headwalls	15 cu yds.

FED. ROAD DIST. NO.	STATE	FED. AID PROJ. NO.	FISCAL YEAR	SHEET NO.	TOTAL SHEETS
3	VT	2	1954	34	133

J.L. Davis, Chief Engineer
S.C. Bond, Deputy

J.L. Davis, Chief Engineer
S.C. Bond, Deputy

* Longer Posts required.



B.M. Top of iron marker two right of 480+00, Elev 724.33

Series 2, 1954, Sheet 34 of 133