

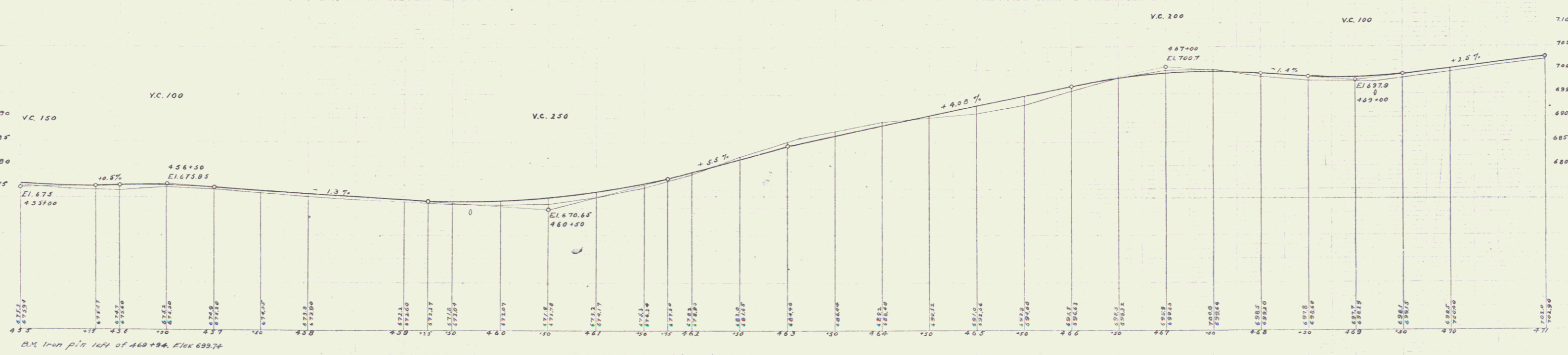
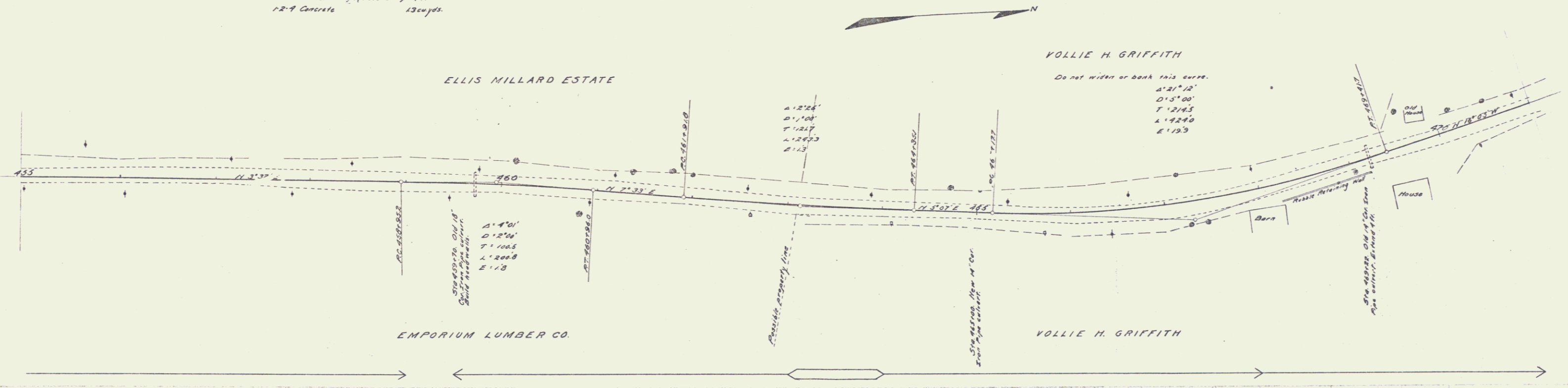
**GUARD RAIL REQUIRED**  
 ON LEFT  
 Sta 459+38 to Sta 459+62 Length 24 ft.  
 - 464+88 - 465+12 - 24'  
 - 469+10 - 469+34 - 24'  
 ON RIGHT  
 - 455+00 to Sta 443+72 - 1072'  
 - 468+30 - 469+34 - 104'  
 TOTAL THIS SHEET 1240 ft.

**CULVERT REPAIRS REQUIRED**  
 Sta 459+70  
 12" Concrete Headwall 13 cu yds.  
 Sta 465+00 14" Gal. Iron Pipe 32 ft.  
 12" Concrete 11 cu yds.  
 Sta 469+22 14" Gal. Iron Pipe (Expansion) 9 ft.  
 12" Concrete 13 cu yds.

FED. ROAD DIST. NO.	STATE	FED. AID PROJ. OR YEAR	SHEET NO.	TOTAL SHEETS
9	VT	12	1918-34	33

J.L. Davis  
 S.L.D. and C.H. Day  
 11/19/34

J.L. Davis  
 W.E. Fowler  
 J.L. Davis  
 8/1/35



Sheet 32 of 33