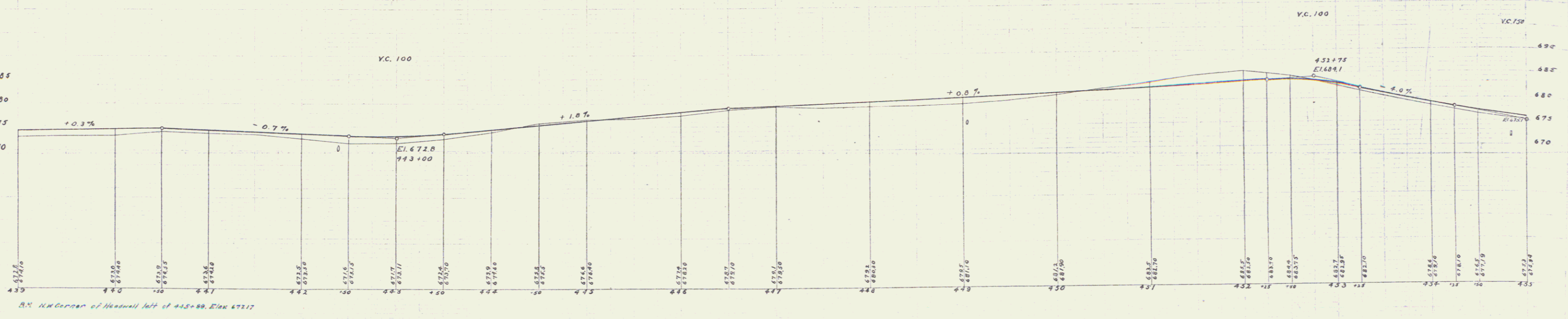
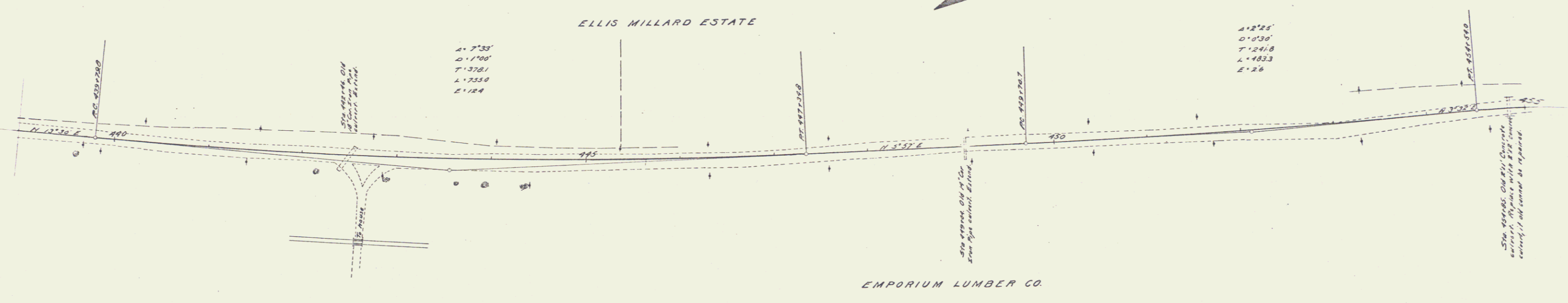


GUARD RAIL REQUIRED
 ON LEFT
 Sta 442+34 to Sta 442+58 Length 24ft
 448+32 " 449+16 " 24'
 454+73 " 454+97 " 24'
 ON RIGHT
 429+00 to Sta 442+58 " 388'
 448+79 " 451+78 " 304'
 453+80 " 453+00 " 120'
 TOTAL THIS SHEET 1054ft

CULVERT REPAIRS REQUIRED
 Sta 442+96 18" Cor Iron Pipe (Extension) 6ft
 1-2-4 Concrete Headwalls 15cu yds
 Sta 449+04 18" Cor Iron Pipe (Extension) 10ft
 1-2-4 Concrete Headwalls 12cu yds
 Sta 454+85 24" Concrete 25.8ft
 1-2-4 Concrete 5.2cu yds
 1-3-6 " 8.0 "

FED. ROAD DIST. NO.	STATE	FED. AID PROJ. NO.	FISCAL YEAR	SHEET NO.	TOTAL SHEETS
9	VT	11	1959-60	32	133



J.L. Davis
 U.S. and C.H. Day
 1/19/59

W.H. Davis
 W.L. Walker
 W.L. Walker
 W.L. Walker

Sheet 32 of 133