

**GUARD RAIL REQUIRED**

ON LEFT:

|                          |              |
|--------------------------|--------------|
| Sta 307+00 to Sta 307+24 | Length 24 ft |
| 313+00                   | 24           |
| 314+00                   | 24           |
| 319+11                   | 24           |

ON RIGHT:

|                      |    |
|----------------------|----|
| 307+00 to Sta 307+24 | 24 |
| 313+00               | 24 |
| 314+00               | 24 |
| 318+00               | 24 |
| 320+00               | 24 |

TOTAL THIS SHEET: 960 ft  
50'

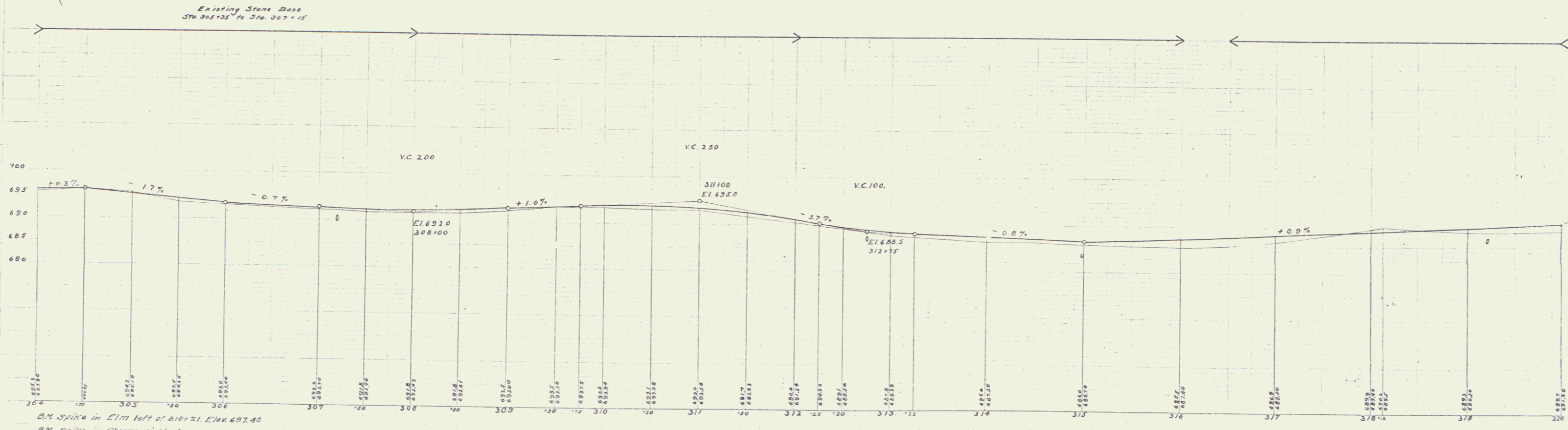
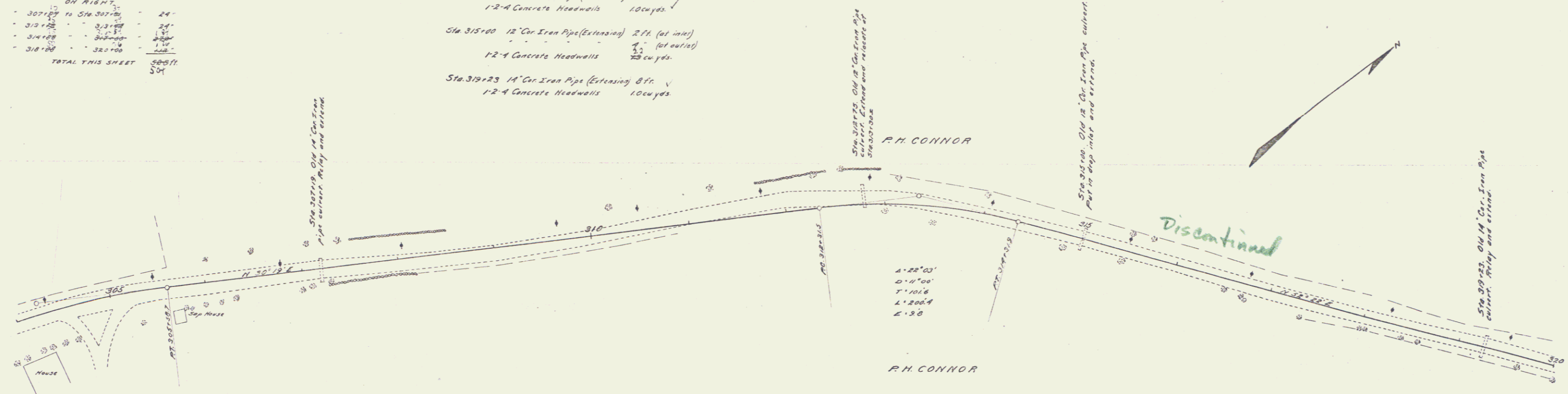
**STONE BASE REQUIRED**

|                          |              |
|--------------------------|--------------|
| Sta 307+00 to Sta 307+24 | Length 24 ft |
|--------------------------|--------------|

**CULVERT REPAIRS REQUIRED**

- Sta 307+19 14" Cor Iron Pipe (Extending 4 ft)  
12-4 Concrete Headwalls 100 cu yds.
- Sta 313+00 12" Cor Iron Pipe (Extension) 6 ft  
12-4 Concrete Headwalls 100 cu yds.
- Sta 315+00 12" Cor Iron Pipe (Extension) 2 ft (at inlet)  
12-4 Concrete Headwalls 25 cu yds.
- Sta 319+23 14" Cor Iron Pipe (Extending 8 ft)  
12-4 Concrete Headwalls 100 cu yds.

| FEED | DATE | REVISION | BY   | CHKD | TOTAL SHEETS |
|------|------|----------|------|------|--------------|
| 9    | VT   | 12       | 1933 |      | 23           |



B.M. Spike in Elm left of 310+21 Elev 697.40  
B.M. Spike in Cherry right of 318+59 Elev 688.55

Series T. No. 12-2127  
Sheet 11 of 23