

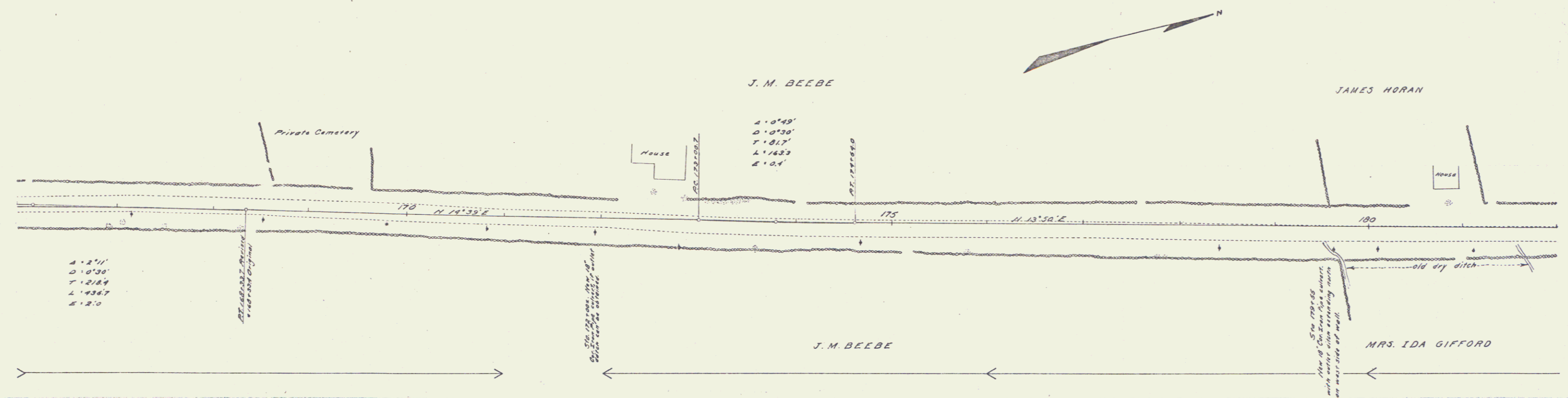
**NEW CULVERTS REQUIRED**  
 Sta 172+00 to 172+16 18" Con. Iron Pipe 26 ft  
 12" Concrete Roadways 18 cu yds  
 Sta 173+33 18" Con. Iron Pipe 26 ft  
 12" Concrete Roadways 18 cu yds

**GUARD RAIL REQUIRED**  
 ON LEFT  
 Sta 172+00 to Sta 172+16 Length 24 ft  
 ON RIGHT  
 Sta 173+33 to Sta 173+50 Length 24 ft  
 TOTAL THIS SHEET 56 ft

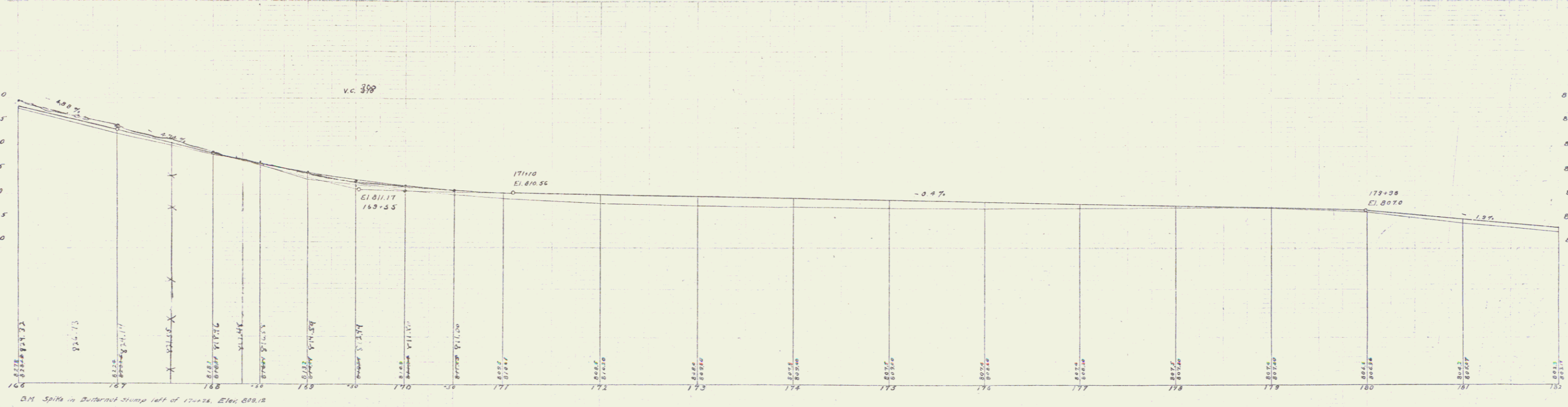
**STONE BASE REQUIRED**  
 Sta 172+16 To 176+00 Length 384 ft

FED. ROAD DIST. NO.	STATE	PER. AID	FISCAL YEAR	SHEET NO.	TOTAL SHEETS
9	VT	12	1918-19	13	133

U.S. GEOLOGICAL SURVEY  
 WASHINGTON, D.C.



W. B. SWANSON  
 CIVIL ENGINEER  
 WASHINGTON, D.C.



Series C. 1918. Filed  
 Oct. 17, 1918