

FED. ROAD DIST. NO.	STATE	FED. AID YEAR	CONTRACT NO.	SHEET NO.	TOTAL SHEETS
3	VT	12	1818-24	13	133

**GUARD RAIL REQUIRED**

**ON LEFT**

Sta. 133+00 to Sta. 134+17	Length	24.17
136+00	136+31	31
162+00	162+00	24
165+00	165+00	24

**ON RIGHT**

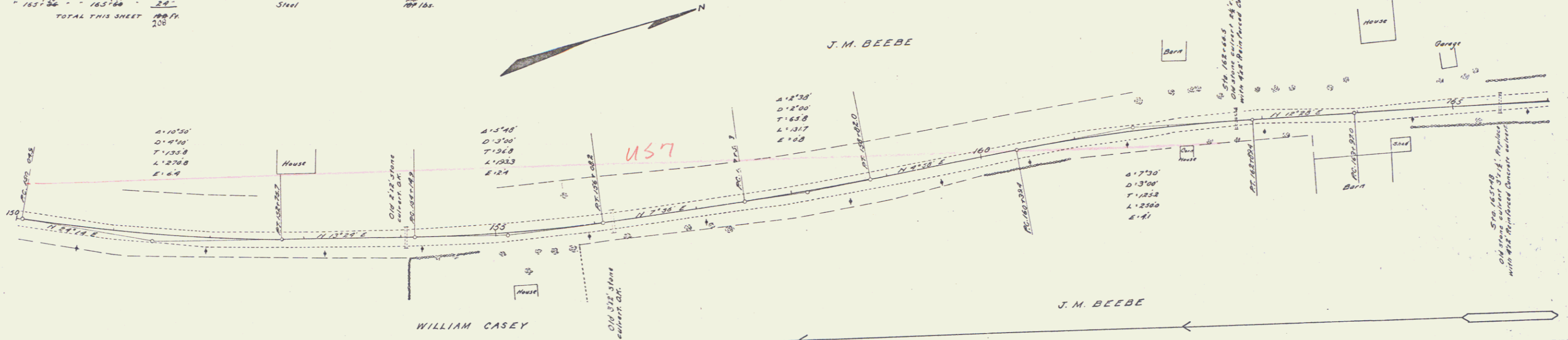
153+00 to Sta. 134+17	24.17
136+00	31
162+00	24
165+00	24

TOTAL THIS SHEET 208 ft

**CULVERT REPAIRS REQUIRED**

Sta. 162+65 4'x2' Reinforced Concrete 26 ft  
 12" Concrete Headwalls 23 cu yds  
 13" Concrete 24  
 Steel 200 lbs.

Sta. 165+48 4'x2' Reinforced Concrete 26 ft  
 12" Concrete Headwalls 23 cu yds  
 13" Concrete 24  
 Steel 200 lbs.



B.M. Sca of Headwall right of 154+01, ELEV 816.53  
 B.M. Sca of Headwall left of 156+12, ELEV 818.91  
 B.M. Spike in Maple left of 164+88, ELEV 834.64

Survey F. B. B. Filed  
 8/15/1933