

FED. ROAD DIST. NO.	STATE	PROJ. NO.	SECTION	SHEET NO.	TOTAL SHEETS
0	VT	12	101-14	12	133

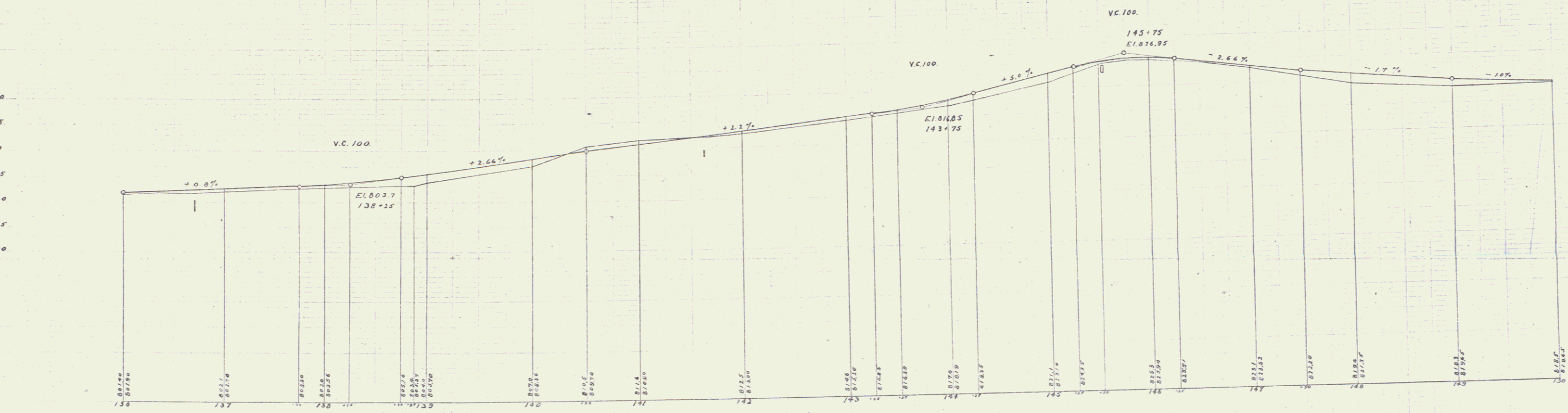
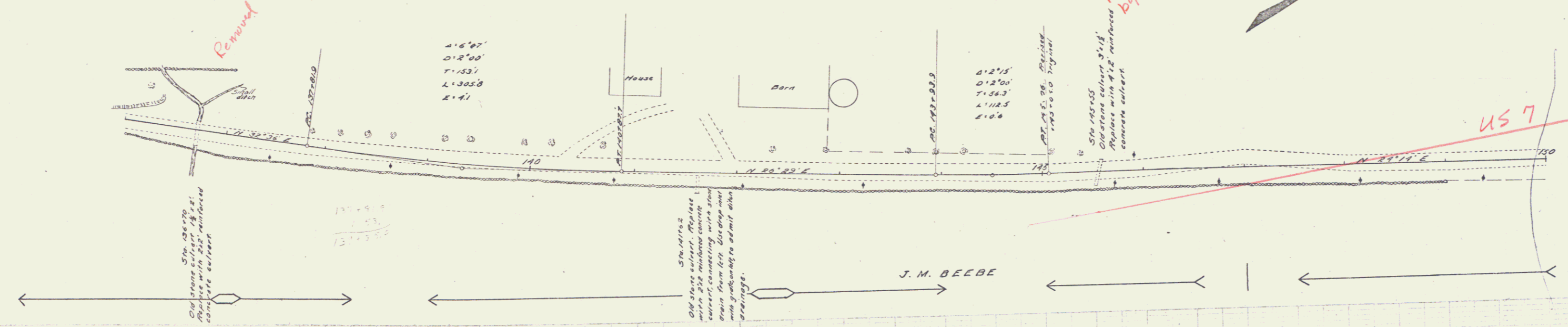
**GUARD RAIL REQUIRED**

ON LEFT

Sta 136+00 to Sta 136+24	Length 24 ft
136+00	24
136+24	24
136+48	24
136+72	24
136+96	24
141+50	24
141+74	24
145+00	24
<b>TOTAL THIS SHEET</b>	<b>481</b>

**CULVERT REPAIRS REQUIRED**

Sta 136+70	2'-2" Reinforced Concrete	28 ft.
	1'-2" Concrete Headwalls	20 sq. yds.
	1'-3" Concrete	1 1/2
	Steel	62 lbs.
Sta 141+62	1'-2" Concrete	31 ft.
	1'-3" Concrete	20 sq. yds.
	Steel	75 lbs.
	Cast Iron Grate	1
Sta 145+00	4'-2" Reinforced Concrete	28 ft.
	1'-2" Concrete Headwalls	20 sq. yds.
	1'-3" Concrete	1 1/2
	Steel	79 lbs.



3x Spike in Maple left of 139+44 Elev. 807.22

Series F-190 Filed  
Date 12/1/59