

GUARD RAIL REQUIRED ON LEFT

Sta 31+32 to 31+36	Length 44'
31+32	31+36
31+36	31+40
31+40	31+44
31+44	31+48
31+48	31+52
31+52	31+56
31+56	31+60
31+60	31+64
31+64	31+68
31+68	31+72
31+72	31+76
31+76	31+80
31+80	31+84
31+84	31+88
31+88	31+92
31+92	31+96
31+96	32+00
TOTAL THIS SHEET	688'

STONE BASE REQUIRED

Sta 33+00 to Sta 33+00 Length 400'

NEW CULVERTS REQUIRED

Sta 37+30 to 37+30 Length 40'

CULVERT REPAIRS REQUIRED

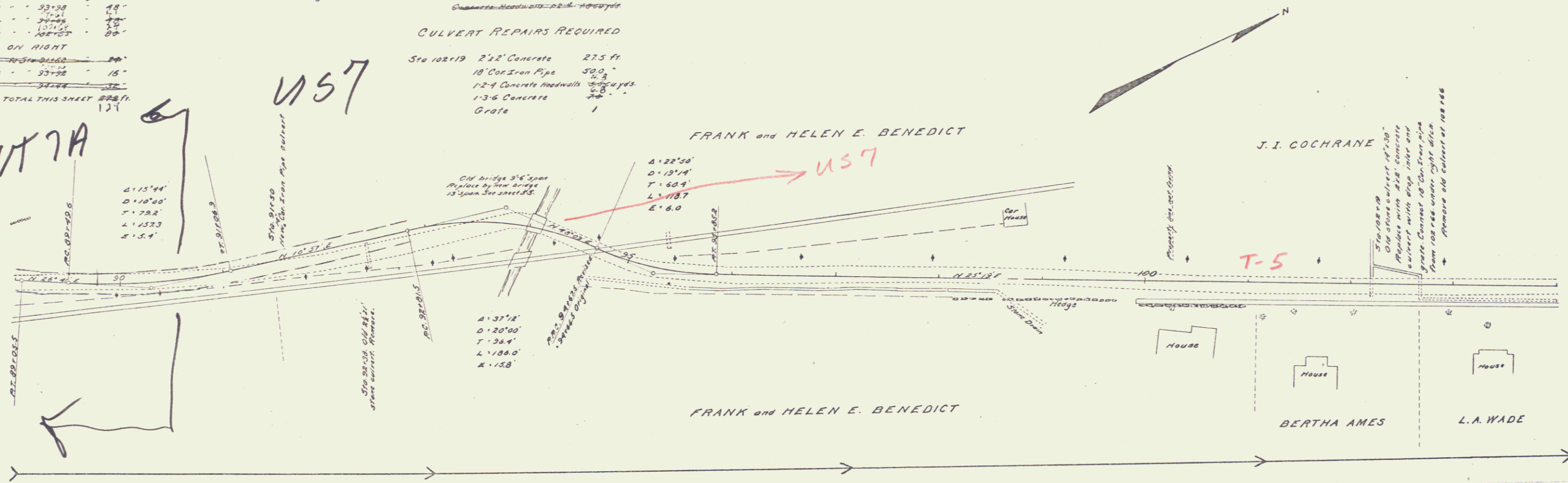
Sta 102+19 2'x2' Concrete 27.5 ft
 18" Cor. Iron Pipe 30.0 "
 12" Concrete footwalk 50.0 yds
 1-3/8 Concrete 5.0 "
 Grate 1

FED. DIST. NO.	STATE	FED. AID	LOCAL AID	SHEET NO.	TOTAL SHEETS
9	VT	12	182-24	9	133

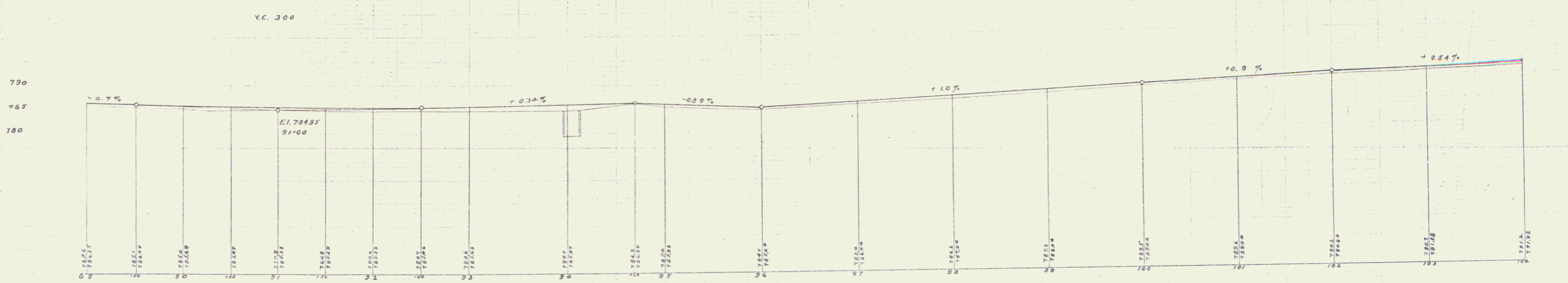
VT 7A

US 7

V.L. DAVIS
 J.L. BROWN
 CIVIL ENGINEERS
 100 N. BROAD ST.
 BURLINGTON, VT.



W.A. GILFILLAN
 ARCHITECT
 CIVIL ENGINEER
 100 N. BROAD ST.
 BURLINGTON, VT.



B.M. Spike in Boxwood left of 93+90, Elev 788.51
 B.M. S.W. corner granite step right of 101+41, Elev 790.67

Series C, No. 13, 1/23