

STATE OF VERMONT  
DEPARTMENT OF HIGHWAYS

PROPOSED IMPROVEMENT

TOWNS OF MANCHESTER-DORSET

COUNTY OF BENNINGTON

U.S. ROUTE 7

MANCHESTER - DANBY ROAD

BEGINNING AT A POINT 2,608.7 FEET SOUTHERLY OF THE MANCHESTER-DORSET TOWN LINE AND EXTENDING NORTHERLY 12,248.5 FEET

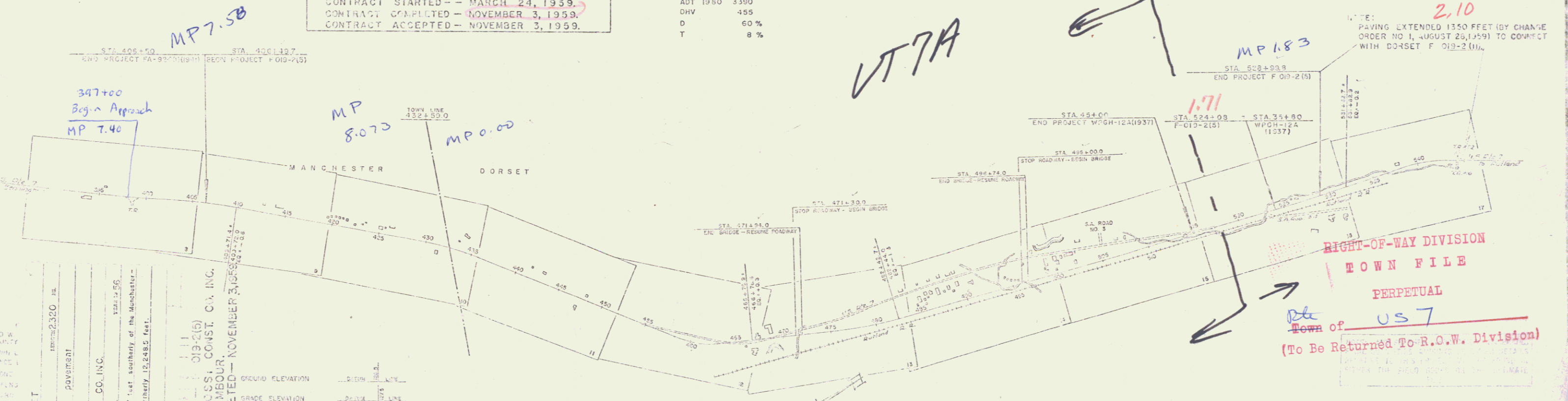
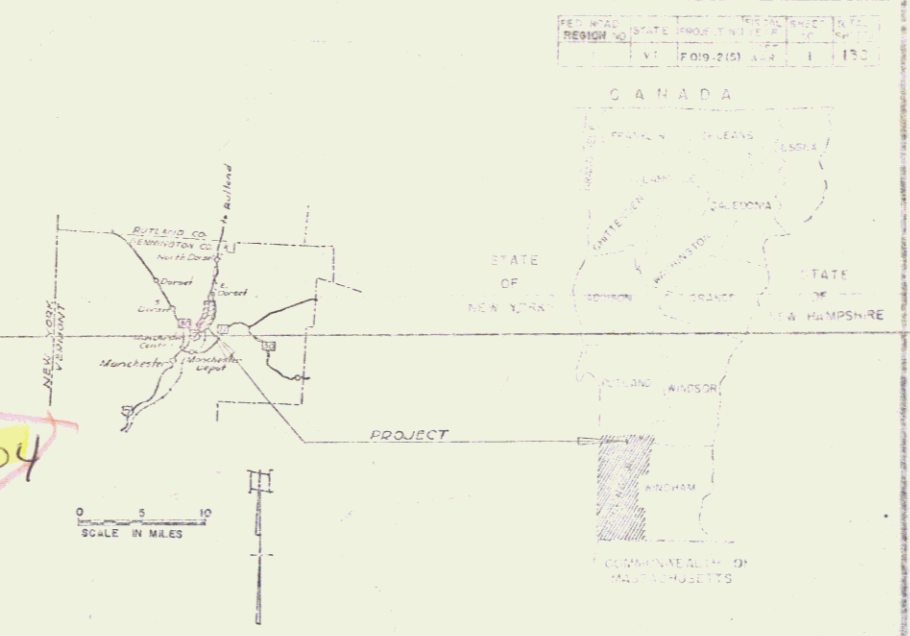
LENGTH OF ROADWAY 12,110.5 FEET + 2.294 MILES  
LENGTH OF BRIDGES 138.0 FEET + 0.026 MILE  
LENGTH OF PROJECT 12,248.5 FEET + 2.320 MILES

ADT 1955 2000  
ADT 1960 3390  
OHV 455  
D 60 %  
T 8 %

PROJECT NAME & NUMBER TYPE PAVEMENT AREA  
MANCHESTER-DORSET F-019-2(5) 3" BIT. CONC. PAVE. 39,360 sq. yd.  
RECORD PLANS MATERIALS  
REIN. CONC. PIPE - VERMONT CONCRETE PIPE CO. - WINDSOR, VT.  
A.C.C. MET. L. PIPE - N.E. MET. CULV. CO. - WHITE RIVER JCT., VT.  
CEMENT - IRON CLAD CEMENT CO. - GLENS FALLS, N.Y.  
W. NEGATIVE 8 BIT. CONC. PAVE. - WEDALEY, NC. - SHAFTSBURY, VT.  
REIN. STEEL 5 GUARD RAIL CABLE - BETHLEHEM STEEL CO. - BETHLEHEM, PA.  
STRUCT. STEEL - VT. STRUCTURAL STEEL CO. - BURLINGTON, VT.  
TAR & ASPHALT - BARNETT CO. - EVERETT, MASS.  
GRAVEL - STEPHEN T. & GUNTHER PIT - DORSET, VERMONT.  
PEA STONE - W.E. DAILEY, INC. - MANCHESTER, VERMONT.  
CONTRACTOR - S.V. ROSSI CONST. CO. INC.  
RESIDENT ENGINEER - T. KAMBOUR.  
INSPECTOR - F. PEED.  
RECORD PLANS - T. KAMBOUR.  
CONTRACT DATED - DECEMBER 18, 1958.  
CONTRACT STARTED - MARCH 24, 1959.  
CONTRACT COMPLETED - NOVEMBER 3, 1959.  
CONTRACT ACCEPTED - NOVEMBER 3, 1959.

INDEX OF SHEETS

SHEET NO. 1	TITLE PAGE
2	TYPICAL CROSS-SECTION OF IMPROVEMENT BITUMINOUS CONCRETE PAVEMENT, ITEM 351-B, MOD.
3	QUANTITY SHEET (ITEMS)
4	QUANTITY SHEET (FINISHES)
5-7	EARTHWORK SHEETS
8-17	PLAN AND PROFILE SHEETS
18	BRIDGE SHEET (408+09.9) TYPICAL AND DETAILS
19	BRIDGE SHEET (408+65.3) REINFORCING STEEL SCHEDULE
20	BRIDGE SHEET (471+00.0) TYPICAL
21	BRIDGE SHEET (471+00.0) DETAILS OF ABUTMENTS NOS. 1 & 2
22	BRIDGE SHEET (471+00.0) SUPERSTRUCTURE DETAILS
23	EARTHWORK SHEET (BRIDGE) 471+50.0
24	BRIDGE SHEET (471+00.0) REINFORCING STEEL SCHEDULE
25	BRIDGE SHEET (458+75.5) TYPICAL AND DETAILS
26	BRIDGE SHEET (458+75.5) DETAILS OF ABUTMENTS NOS. 1 & 2
27	BRIDGE SHEET (496+20.0) SUPERSTRUCTURE DETAILS
28	EARTHWORK SHEET (BRIDGE) 456+25.0
29	BRIDGE SHEET (496+25.0) REINFORCING STEEL SCHEDULE
30	BRIDGE SHEET (523+30.0) LOCATION AND BARREL DETAILS
31	BRIDGE SHEET (523+30.0) ARCHES AND WING DETAILS
32	BRIDGE SHEET (523+30.0) REINFORCING STEEL SCHEDULE
33	STANDARD BRIDGE SHEET 59-20-56
34-35	STANDARD BRIDGE SHEETS 52B-42-54
36-37	STANDARD BRIDGE SHEETS 3D-56-57
38	STANDARD BRIDGE SHEET 59-AS 15' SKEW-57
39	STANDARD BRIDGE SHEET 8R-AS 30'-57
40	STANDARD BRIDGE SHEET 8C-21
41	A-01 (SLOPES IN SOLID ROCK)
42	B-1 (BANKING TABLES)
43	G-4 (STEEL MARKER POSTS)
44	J-1 (PROJECT MARKERS)
45	RS-56-4 (DRAINAGE)
46	RS-56-6 (TYPICAL CLOPE GRADINGS)
47	RS-56-11 (TYPICAL CABLE GUARD RAIL WITH STEEL POSTS)
48	RS-57-12 (UNDERDRAINS, SIGNS AND LIGHTS)
49	RS-57-5 (UNDERDRAIN FLUSHING BASIN)
50-120	CROSS-SECTIONS
130-139	CHANNEL SECTIONS



MANCHESTER-DORSET  
015-51(2)  
3" Bituminous concrete pavement  
S.V. ROSSI CONST. CO. INC.  
BENNINGTON, VERMONT  
Contract begun at a point 2,608.7 feet southerly of the Manchester-Dorset town line and extending northerly 12,248.5 feet.

MANCHESTER-DORSET  
019-2(5)  
RECORD PLANS  
CONTRACTOR - S.V. ROSSI CONST. CO. INC.  
RESIDENT ENGINEER - T. KAMBOUR.  
INSPECTOR - F. PEED.  
RECORD PLANS - T. KAMBOUR.  
CONTRACT DATED - DECEMBER 18, 1958.  
CONTRACT STARTED - MARCH 24, 1959.  
CONTRACT COMPLETED - NOVEMBER 3, 1959.  
CONTRACT ACCEPTED - NOVEMBER 3, 1959.

SCALES

TITLE	1" = 200'
TYPICAL	1" = 2.5'
PLAN	1" = 50'
TRAFFIC	1" = 50'
VERTICAL	1" = 10'
CROSS-SECTIONS	1" = 5'

DEPARTMENT OF HIGHWAYS  
BUREAU OF PUBLIC WORKS  
PROJECT NO. F-019-2(5)

Handwritten notes and stamps:  
- STA 516  
- U.S. 7  
- VT 7A  
- MP 183  
- 1.71  
- 2.10  
- PAVING EXTENDED 1350 FEET (BY CHANGE ORDER NO. 1, AUGUST 28, 1959) TO CORRECT WITH DORSET F-019-2(10).  
- RIGHT-OF-WAY DIVISION  
- TOWN FILE  
- PERPETUAL  
- Town of U.S. 7  
- (To Be Returned To R.O.W. Division)

THREE CABLE GUARD RAIL w/ STEEL POSTS  
 27  
 397+70-403+00  
 Removal - Disposal of Present Guard Rail  
 398+00-398+30 RT  
 399+00-403+00 RT  
 PLANK GUARD RAIL w/PRESERVATIVE TREATMENT  
 399+27

Construct Approach  
 398+00 RT  
 #1A NICHOLAS & ELEANOR LEMTUGOV  
 (A 0.02) STA 396+00-398+68.2  
 W.D.O.E. 12/16/58  
 RECORDED: MANCHESTER - BK 52 - PG 286 - 12/19/58

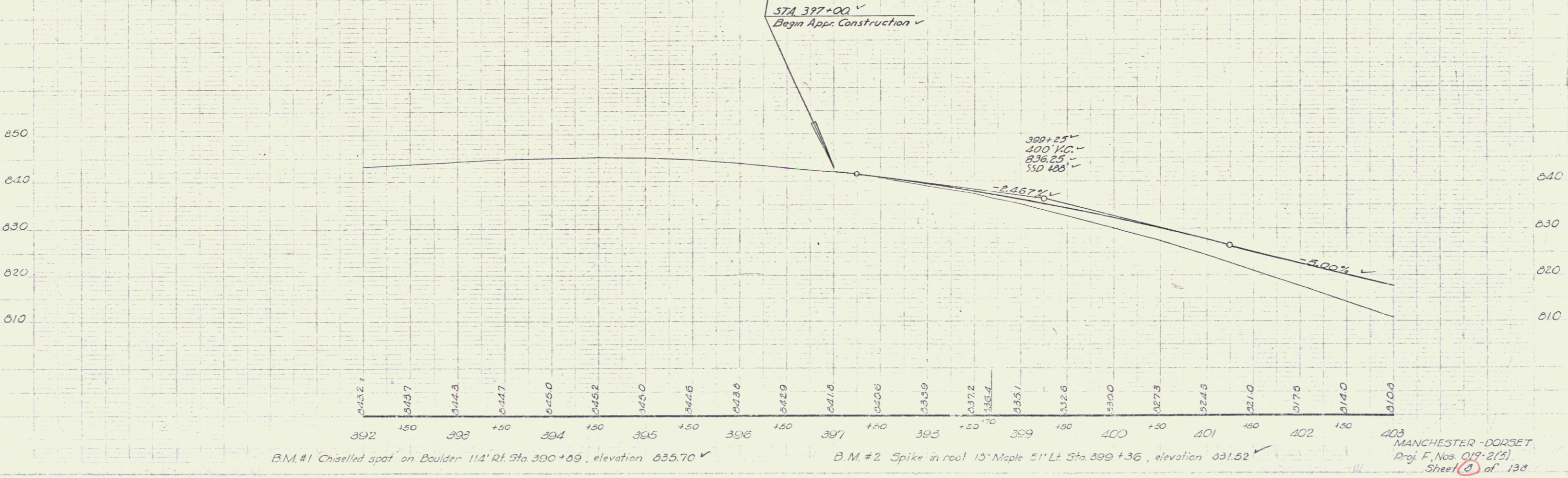
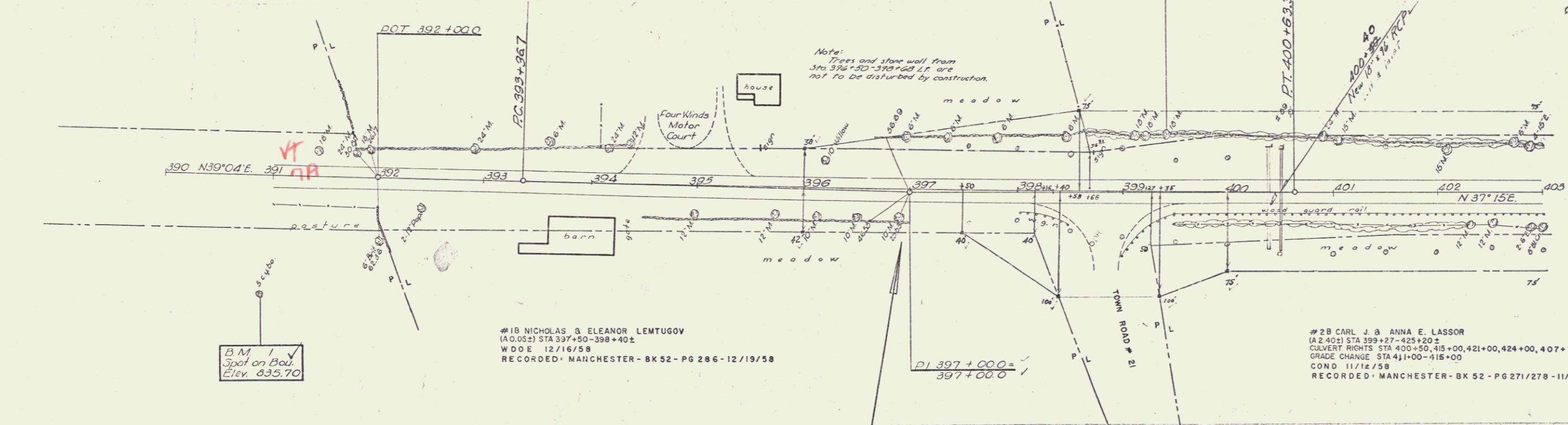
PRESENT ROW PURCHASED FROM H.P. WAY BY  
 W.D.O.E. 6-23-41 BK 41 PG 206 MANCHESTER L.R.  
 APR SUR. STA 391+76-399+71 E

PRESENT ROW ESTABLISHED BY F.A.P. 92 C (I) 1942  
 SUR. STA 391+00-409+50 LT & RT.

$\Delta$  1° 49' L.A.V  
 D 0° 15'  
 R 22918.3'  
 T 363.3'  
 L 726.6'  
 E 29'  
 Do not Bank

#2A CARL J. & ANNA E. LASSOR  
 (A 100) STA 398+58-419+92  
 COND. 11/12/58  
 RECORDED: MANCHESTER - BK 52 - PG 271/278 - 11/14/58

0-97  
 10-97  
 11-97  
 12-97  
 13-97  
 14-97  
 15-97  
 16-97  
 17-97  
 18-97  
 19-97  
 20-97  
 21-97  
 22-97  
 23-97  
 24-97  
 25-97  
 26-97  
 27-97  
 28-97  
 29-97  
 30-97  
 31-97  
 32-97  
 33-97  
 34-97  
 35-97  
 36-97  
 37-97  
 38-97  
 39-97  
 40-97  
 41-97  
 42-97  
 43-97  
 44-97  
 45-97  
 46-97  
 47-97  
 48-97  
 49-97  
 50-97  
 51-97  
 52-97  
 53-97  
 54-97  
 55-97  
 56-97  
 57-97  
 58-97  
 59-97  
 60-97  
 61-97  
 62-97  
 63-97  
 64-97  
 65-97  
 66-97  
 67-97  
 68-97  
 69-97  
 70-97  
 71-97  
 72-97  
 73-97  
 74-97  
 75-97  
 76-97  
 77-97  
 78-97  
 79-97  
 80-97  
 81-97  
 82-97  
 83-97  
 84-97  
 85-97  
 86-97  
 87-97  
 88-97  
 89-97  
 90-97  
 91-97  
 92-97  
 93-97  
 94-97  
 95-97  
 96-97  
 97-97  
 98-97  
 99-97  
 100-97



B.M. #1 Chiselled spot on Boulder 114' Rt. Sta. 390+09, elevation 835.70 ✓

B.M. #2 Spike in root 15' Maple 51' Lt. Sta. 399+36, elevation 831.52 ✓

MANCHESTER - DORSET  
 Proj. F. Nos. 019-2(3)  
 Sheet 2 of 138

Removal & Dispose of Present Guard Rail  
 LT  
 403+00 - 403+15  
 403+30 - 403+33

PRESENT R.O.W. PURCHASED FROM C. J. LASSOR BY  
 W.D.S. 6/25/41 - BK 41 - PG 207 MANCHESTER  
 APP. SUR. STA 398+71 - 409+50

B.M. # 3  
 Spot on headwall  
 Elev. 790.56

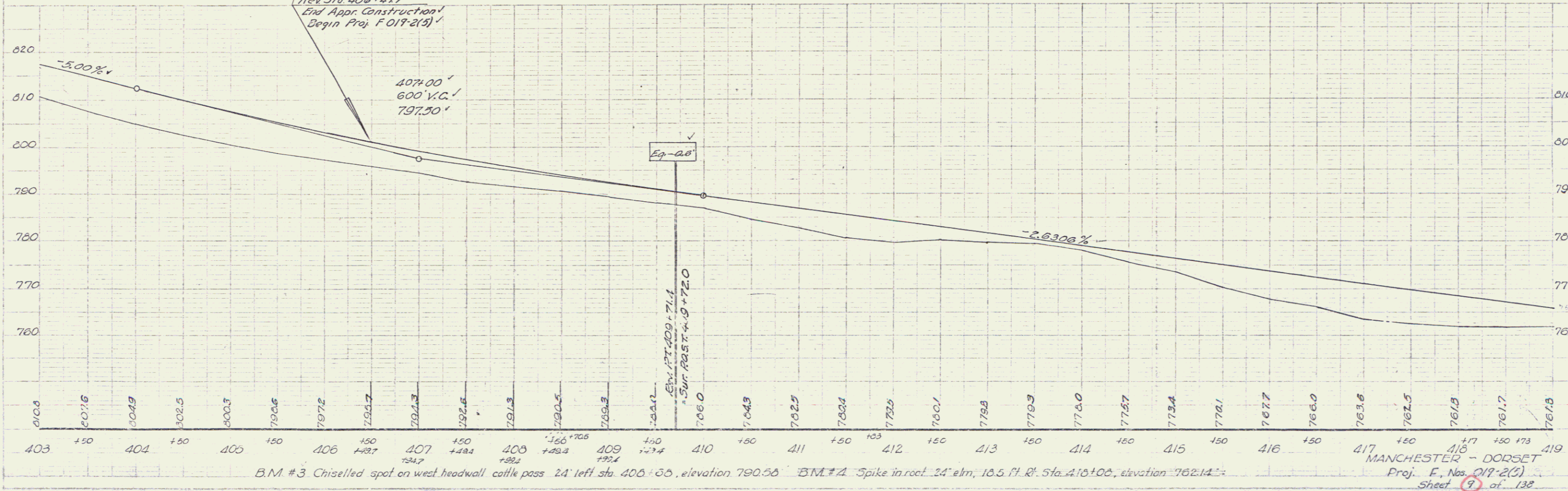
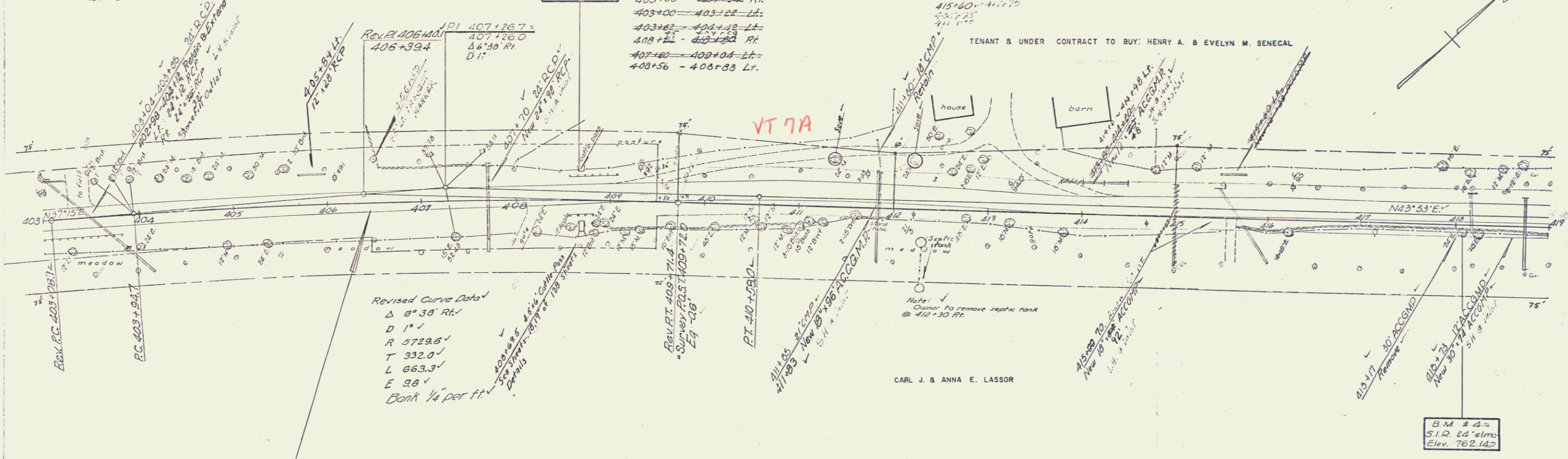
Three Cable Guard Rail with Steel Posts Item 543  
 403+00 - 403+00 RT  
 403+00 - 403+22 LT  
 403+22 - 403+42 LT  
 403+42 - 403+82 RT  
 403+82 - 403+104 LT  
 403+104 - 403+56 LT

Construct Drives  
 LT  
 403+40 - 403+40 V  
 404+00 - 403+42  
 415+00 - 415+10  
 415+10 - 415+10  
 411+15

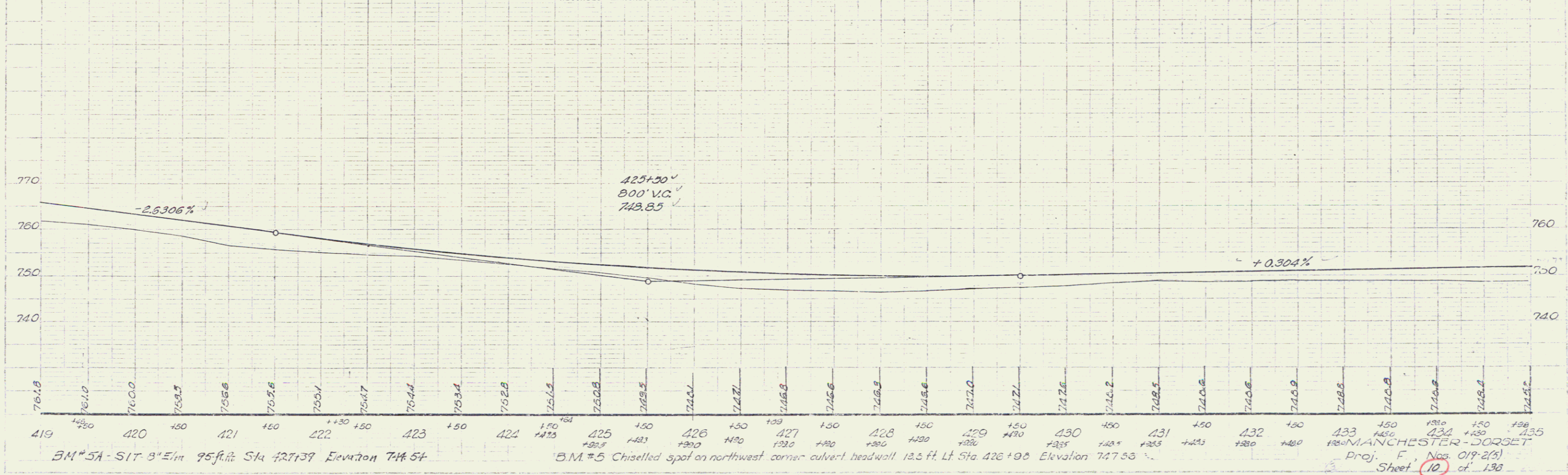
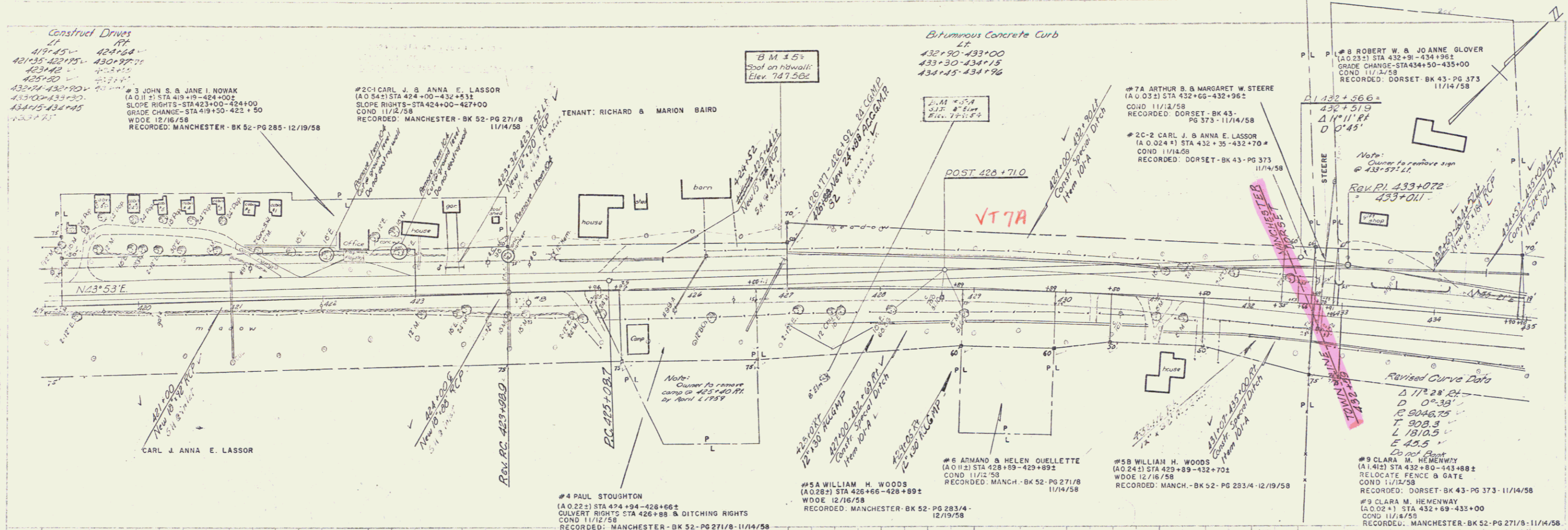
CARL J. & ANNA E. LASSOR

PLANK GUARD RAIL W PRESATIVE TREATMENT  
 413+30 - 413+70 LT

TENANT & UNDER CONTRACT TO BUY: HENRY A. & EVELYN M. SENEAL

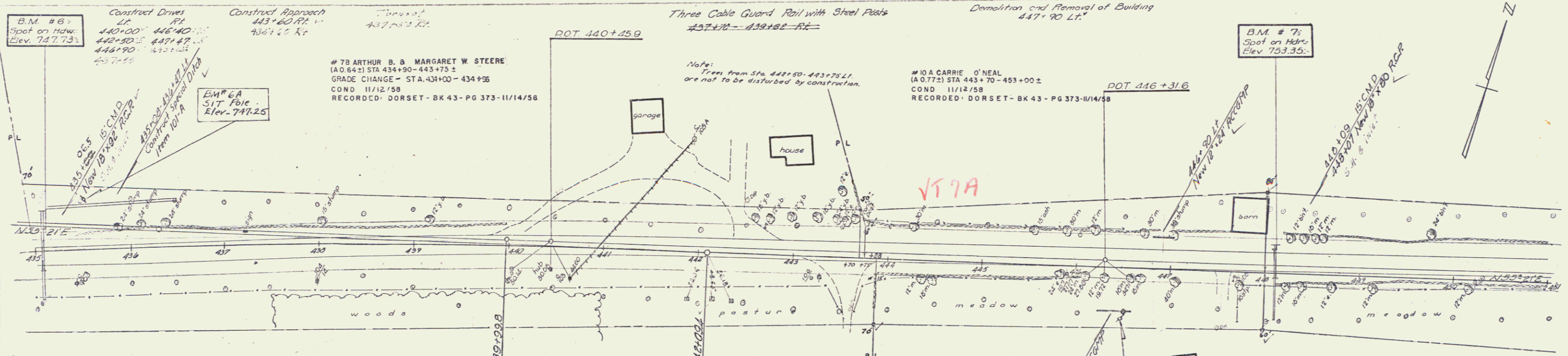


B.M. #3 Chiselled spot on west headwall cattle pass 24' left sta 406+85, elevation 790.56 B.M. #4 Spike in root 24' elm, 16.5 ft. R. Sta. 416+00, elevation 762.14  
 MANCHESTER - DORSET  
 Proj. E. Nos. 017-2(1)  
 Sheet 9 of 132



0.57  
 10.57  
 18.57  
 K.L.P.  
 11/14/58

0.57  
 10.57  
 18.57  
 K.L.P.  
 11/14/58



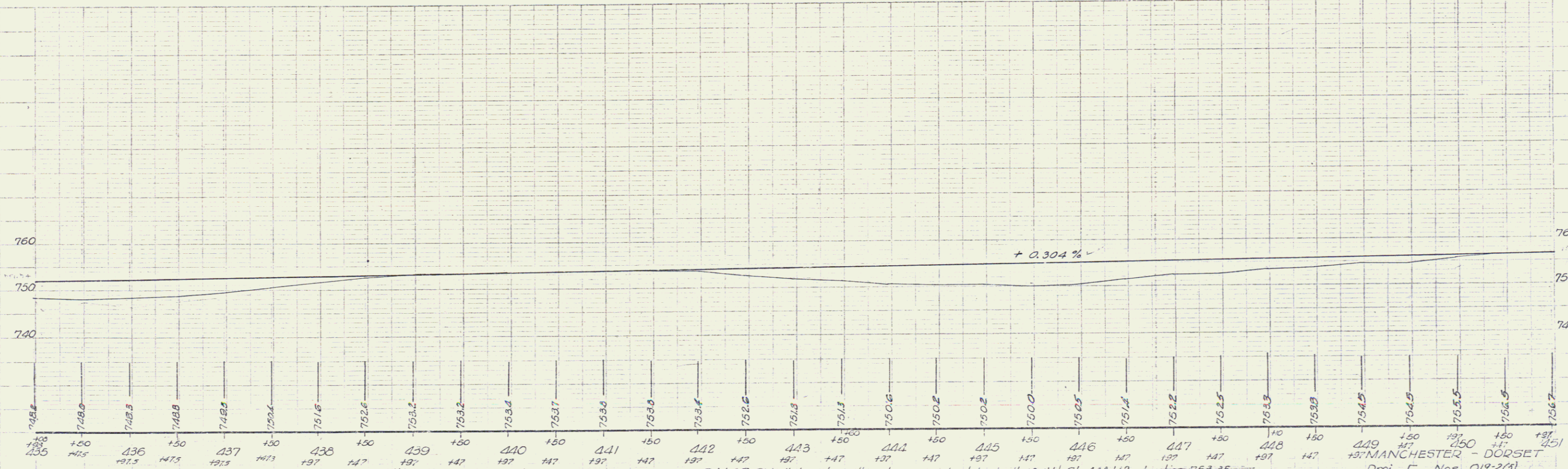
Notes:  
 Owner to remove wood wire fence from falling area, from 437+69 to 443+00 RT.

CLARA M. HEMENWAY

Notes:  
 Trees from Sta 442+60-443+75 L.R. are not to be disturbed by construction.

#10 A. CARRIE O'NEAL  
 (A.O. 775) STA 443+70 - 453+00 ±  
 COND. 11/12/58  
 RECORDED DORSET - BK 43 - PG 373-11/14/58

#108 CARRIE O'NEAL  
 (A.O. 1202) STA 443+88-453+92 ±  
 GRADE CHANGE - STA 444+00 - 448+00  
 COND. 11/12/58  
 RECORDED DORSET - BK 43 - PG 373-11/14/58



B.M. #6 Chiselled spot, northwest corner culvert headwall 4.5 ft. Lt. Sta 435+10, elevation 747.73

B.M. #7 Chiselled spot, northwest corner culvert headwall 16.5 ft. Lt. Sta 446+12, elevation 753.35

B.M. #6A Sit Pole 52 ft. Lt. Sta 435+50, Elevation 749.25

B.M. #7A Sit Pole 51 ft. Lt. Sta 446+75, Elevation 749.96

Drej. F. Nos. 019-2(3)

Sheet 11 of 138

Remove & Disposal of Present Guard Rail  
 451+45 - 457+65 LT  
 458+20 - 459+60 LT  
 463+45 - 464+60 LT-RT  
 463+90 - 464+90 LT

Construct Drives  
 LT  
 454+50 - 463+00

B.M. # 8  
 Spot on Hdr.  
 Elev. 753.48

Three Cable Guard Rail with Steel Posts Item 543  
 455+33 - 465+25-RT  
 458+33 - 464+25-LT  
 465+25 - 467+25 RT & LT

Plank Guard Rail for Barricade  
 457+50 LT Item 544

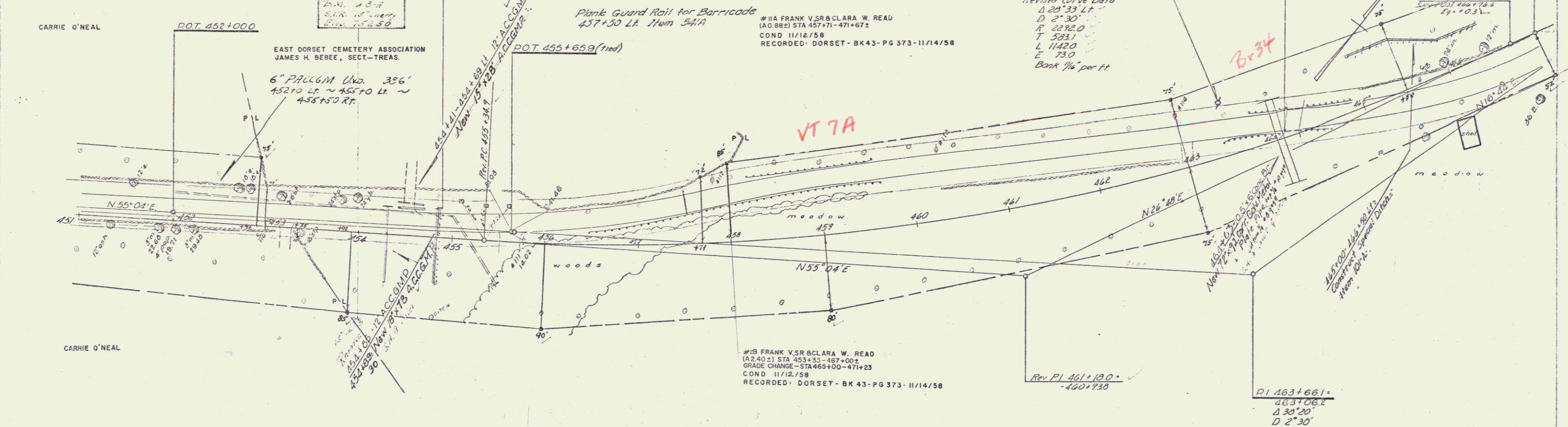
#11A FRANK V. S. R. CLARA W. READ  
 (A.O. 882) STA 457+71 - 471+67.2  
 COND. 11/12/58  
 RECORDED: DORSET - BK 43 - PG 373 - 11/14/58

Revised Curve Data  
 Δ 20° 33' LT  
 D 2° 30'  
 R 2282.0  
 T 523.1  
 L 1142.0  
 E 73.0  
 Bank 1/4" per ft.

B.M. # 9  
 Spot on Br. rail  
 Elev. 737.79

POT 462+00

DATE: 6-27-57  
 DRAWN BY: RWG  
 CHECKED BY: RWG



B.M. # 8 Chiselled spot on northwest corner culvert headwall 22 ft. Lt. Sta 454+09, elevation 753.48  
 B.M. # 8A S.W. 15' Gerry. 84 ft. Lt. Sta 454+00 Elevation 752.55

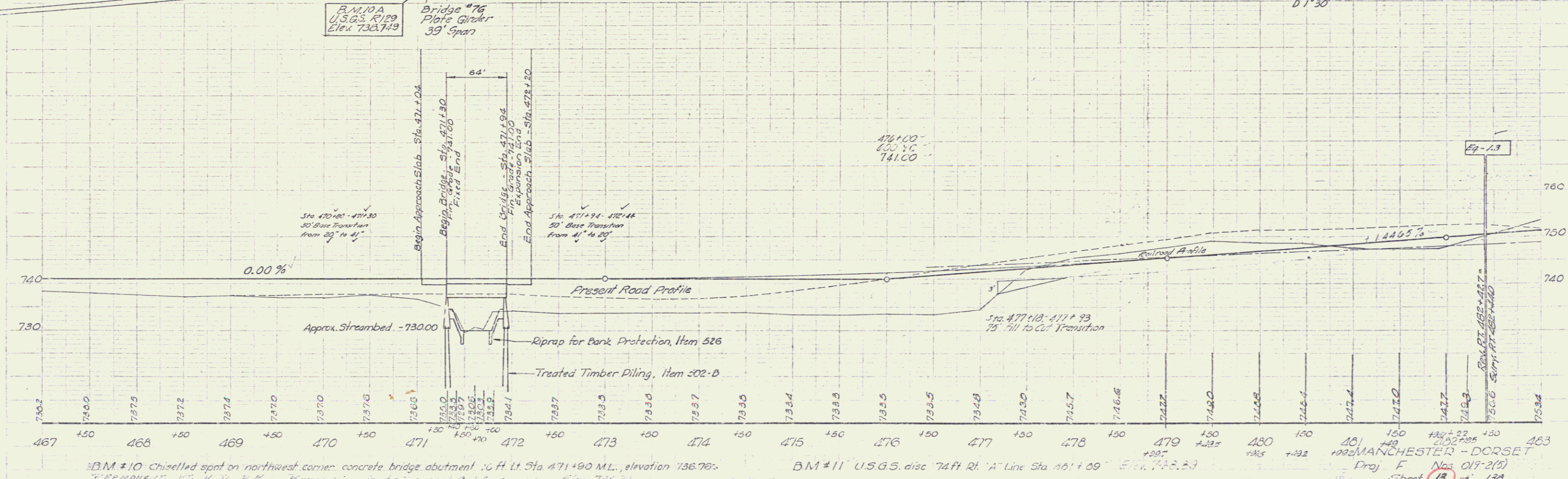
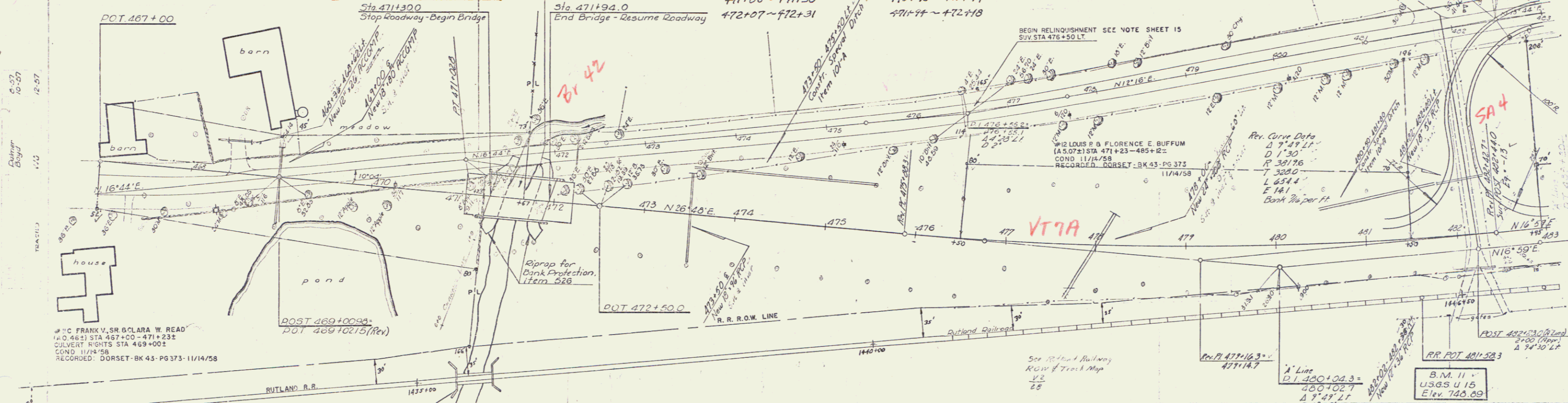
B.M. # 9 Chiselled spot on southwest corner bridge rail 5.5 ft. Lt. Sta 464+10, elevation 737.79  
 B.M. # 9R S.W. 15' Gerry. 35 ft. Lt. Sta 463+50 Elevation 731.91

MANCHESTER - DORSET  
 Proj. E Nos. 018-2(3)  
 Sheet 12 of 130

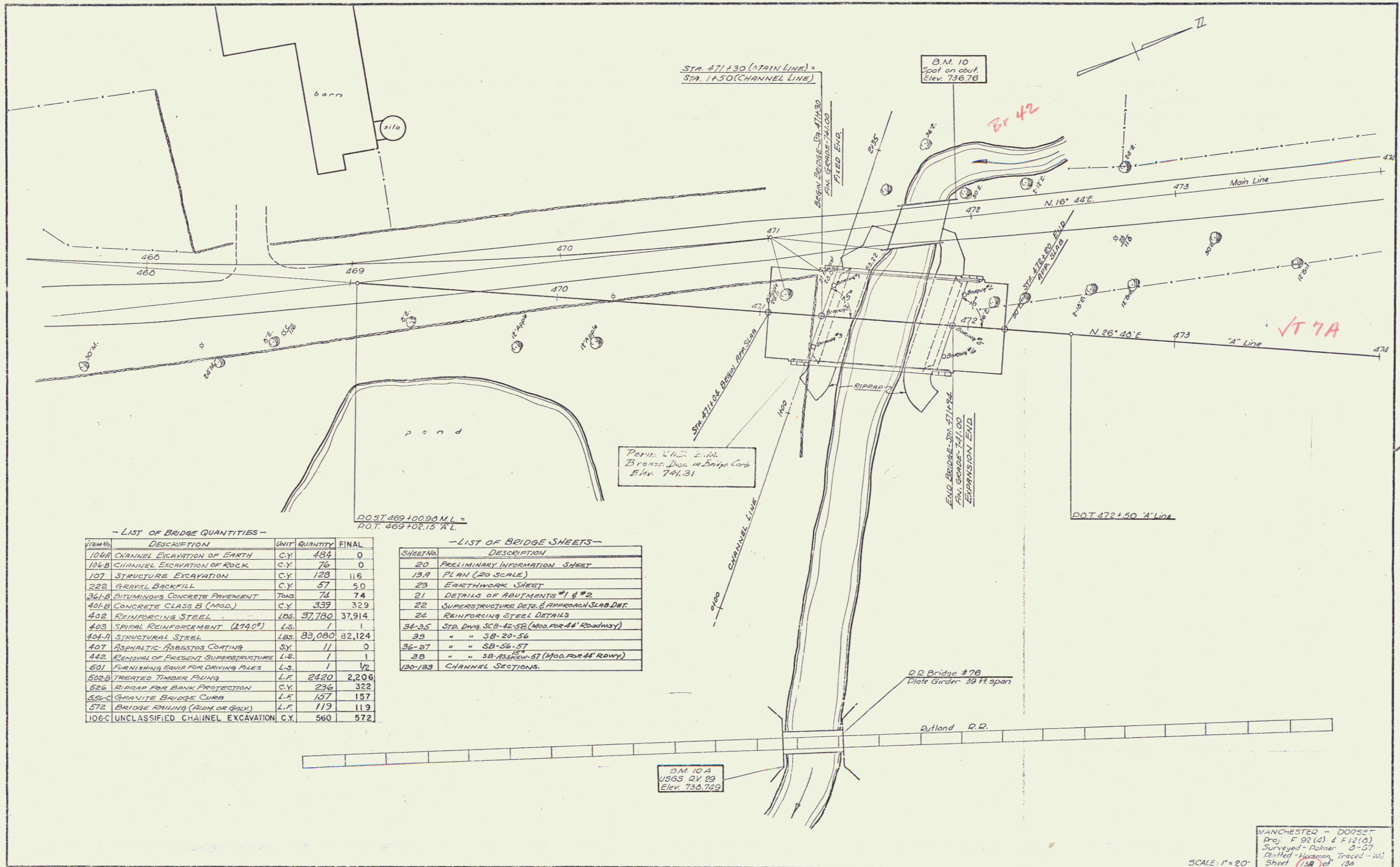
Excavation + Removal of Road Surface on Discontinued Roadway, Item 118 472+00 - 481+00 Lt.  
 Demolition and Removal of Building 467+25 Lt.

Construct Approach 482+13.5 Lt.  
 Construct Drives Lt. 468+50 - 467+50  
 FRANK V. SR. & CLARA W. READ

Plank Guard Rail for Barricade 472+26 Lt. Item 541A  
 Three Cable Guard Rail with Steel Posts Item 543 472+07 - 472+31 Lt.  
 Rt. 470+83 - 471+17  
 471+94 - 472+18



B.M. #10 Chiselled spot on northwest corner concrete bridge abutment. 10 ft. Lt. Sta. 471+90 M.L. elevation 736.76.  
 B.M. #11 U.S.G.S. disc 74 ft. Rt. 'A' Line Sta. 481+09 Elevation 742.33  
 Proj. F. No. 019-2(5)  
 Sheet 13 of 130



- LIST OF BRIDGE QUANTITIES -

ITEM NO.	DESCRIPTION	UNIT	QUANTITY	FINAL
106A	CHANNEL EXCAVATION OF EARTH	C.Y.	434	0
106B	CHANNEL EXCAVATION OF ROCK	C.Y.	76	0
107	STRUCTURE EXCAVATION	C.Y.	128	116
322	GRAVEL BACKFILL	C.Y.	57	50
361-B	BITUMINOUS CONCRETE PAVEMENT	TONS	74	74
401-B	CONCRETE CLASS B (MOD.)	C.Y.	339	329
402	REINFORCING STEEL	LBS.	37,780	37,914
403	SPIRAL REINFORCEMENT (274°)	LBS.	1	1
404A	STRUCTURAL STEEL	LBS.	83,080	82,124
407	ASPHALTIC ASBESTOS COATING	SQ.	11	0
412	REMOVAL OF PRESENT SUPERSTRUCTURE	L.S.	1	1
601	FURNISHING EQUIP FOR DRIVING PILES	L.S.	1	1/2
522B	TREATED TIMBER PILING	L.F.	2420	2,206
526	RIPRAP FOR BANK PROTECTION	C.Y.	236	322
526-C	GRANITE BALDGE CURB	L.F.	157	157
572	BRIDGE PAILING (ALUM. OR GALV.)	L.F.	119	119
106-C	UNCLASSIFIED CHANNEL EXCAVATION	C.Y.	560	572

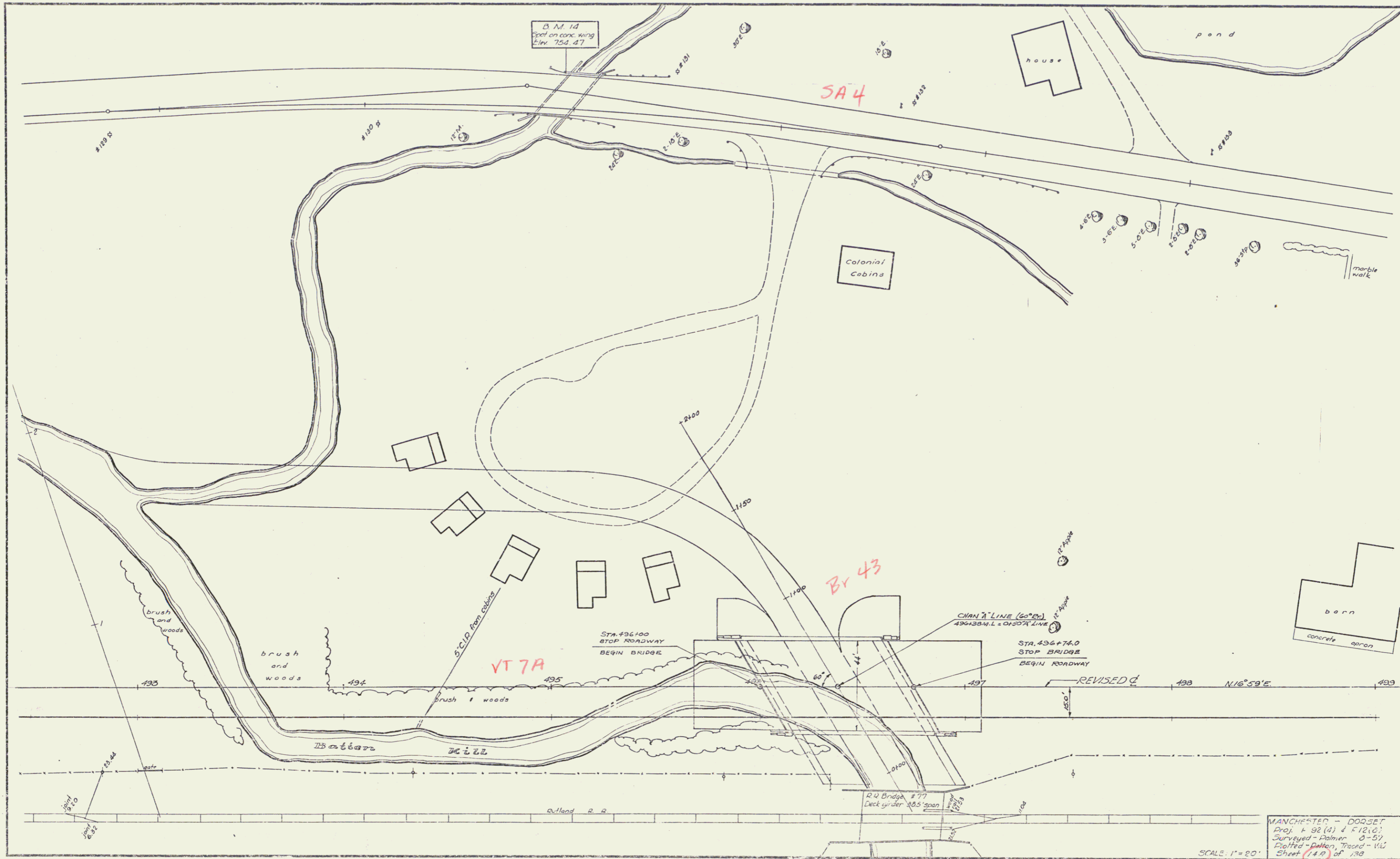
- LIST OF BRIDGE SHEETS -

SHEET NO.	DESCRIPTION
20	PRELIMINARY INFORMATION SHEET
19A	PLAN (20 SCALE)
23	EARTHWORK SHEET
21	DETAILS OF ABUTMENTS #1 & #2
22	SUPERSTRUCTURE DETS. & APPROACH SLAB DET.
24	REINFORCING STEEL DETAILS
36-35	STD. DWG. SCB-42-5B (MOD. FOR 44' ROADWAY)
39	" " SB-20-54
36-37	" " SB-56-57
39	" " SB-ASS-REIN-57 (MOD. FOR 44' ROADWAY)
130-133	CHANNEL SECTIONS.

MANCHESTER - DORSET  
 Proj. F 92 (2) & F 12 (2)  
 Surveyed - Palmer 3-37  
 Drafted - Harmon, Traced - WJ  
 Sheet 13A of 136

SCALE: 1" = 20'





B.M. 14  
Spot on conc. wing  
Elev. 753.47

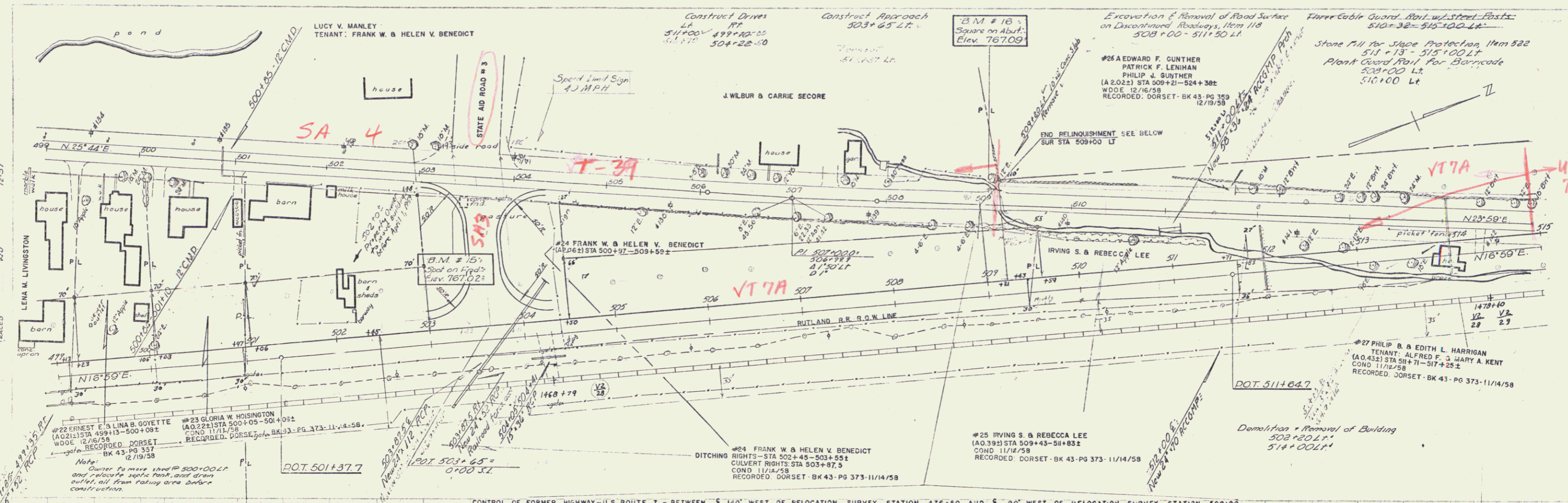
SA 4

Br 43

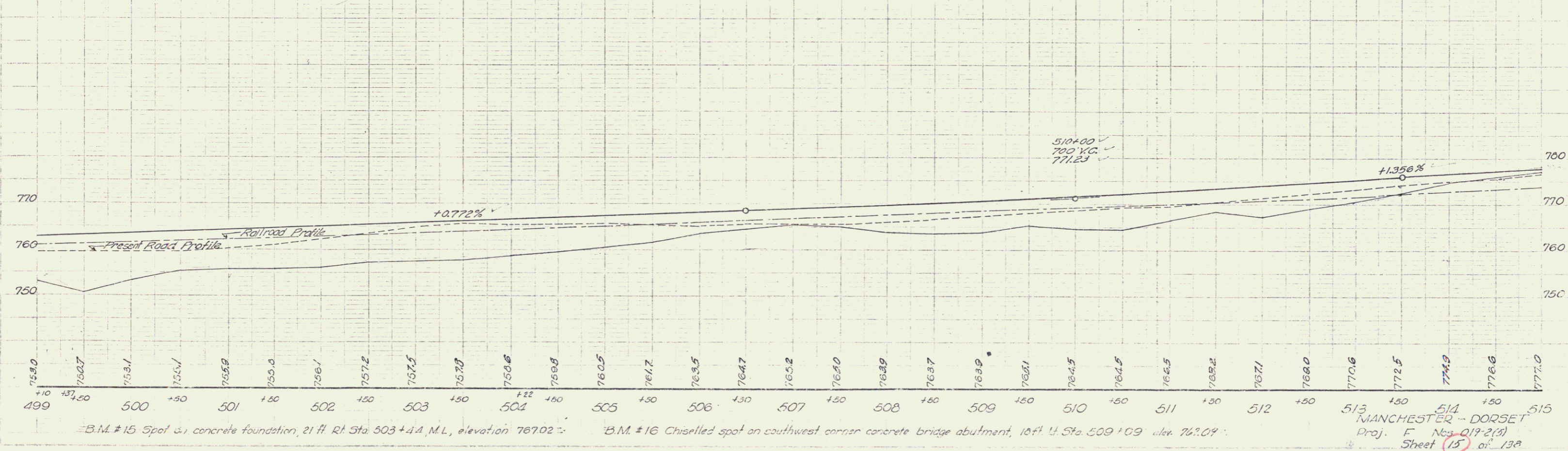
VT 7A

MANCHESTER - DORSET  
 Proj. 4 92 (4) 4 172 (2)  
 Surveyed - Palmer 0-57  
 Plotted - Dalton, Traced - WJ  
 Sheet 14A of 138

SCALE: 1"=20'



CONTROL OF FORMER HIGHWAY - U.S. ROUTE 7 - BETWEEN E 140' WEST OF RELOCATION SURVEY STATION 476+50 AND E 90' WEST OF RELOCATION SURVEY STATION 509+00 IS RELINQUISHED TO THE TOWN OF DORSET. RECORDED IN BOOK 41 PAGE 174, DORSET LAND RECORD, DECEMBER 4, 1959.



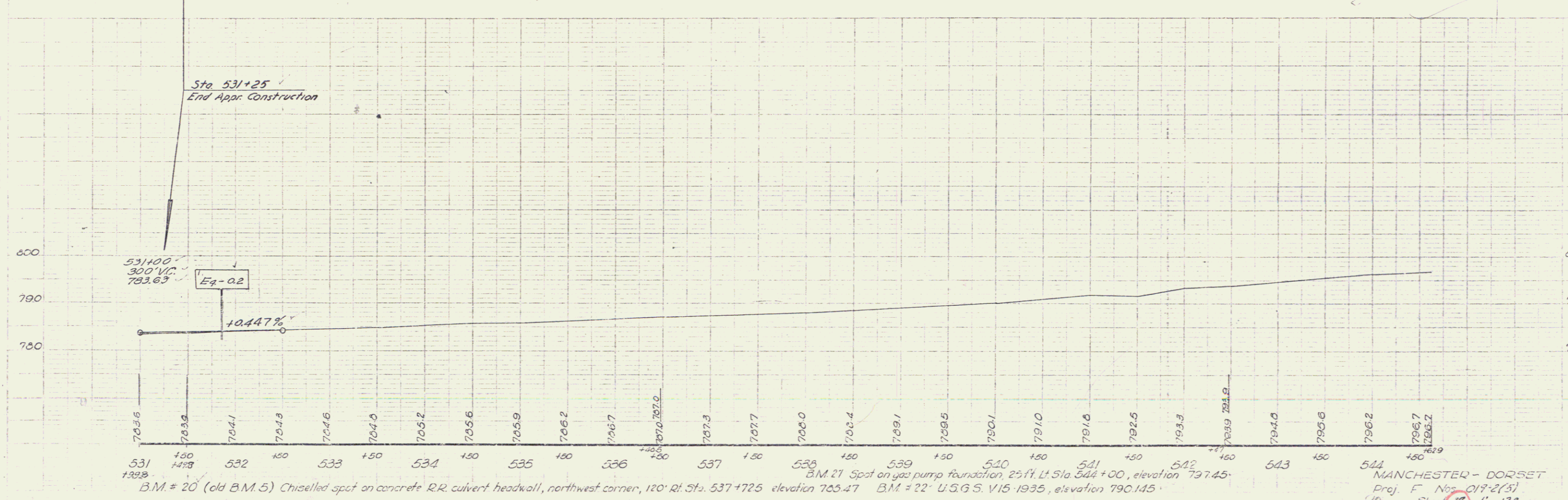
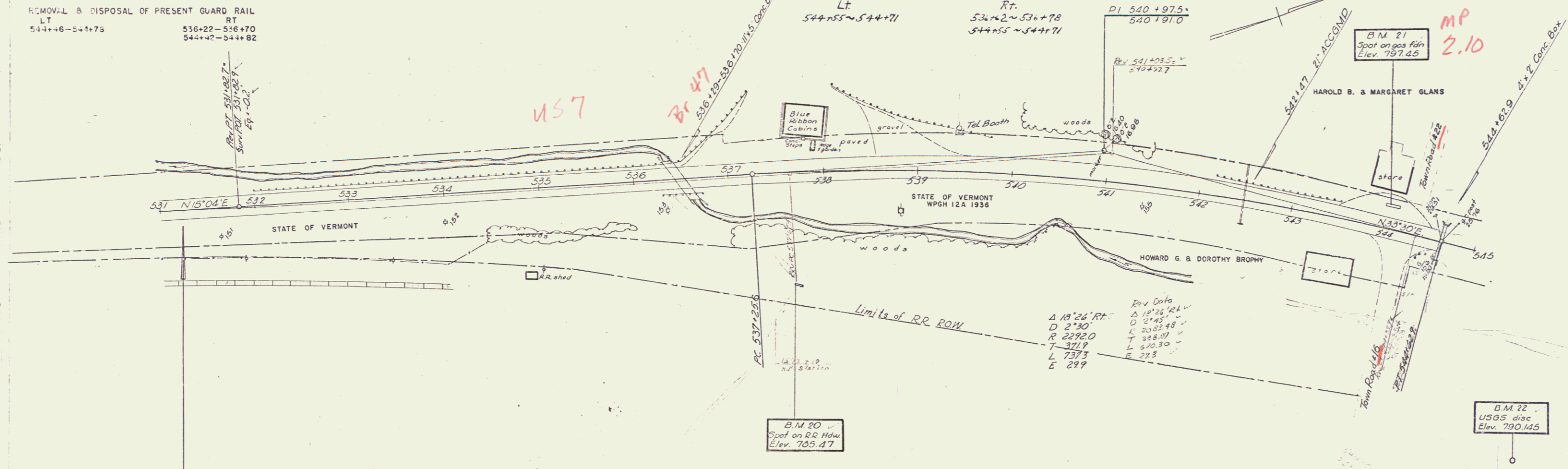


EDWARD F. GUNTHER  
 PATRICK E. LENIHAN  
 PHILIP J. GUNTHER

REMOVAL & DISPOSAL OF PRESENT GUARD RAIL  
 LT 544+06-544+73  
 RT 536+22-536+70  
 544+02-544+82

PRESENT ROW PURCHASED FROM VERMONT MARBLE CO.  
 WD 11-27-36 BK 33-PJ 426-DORSET L.R. WPGH 12A 1936  
 APP SUR. STA. 529+00-544+00

THREE CABLE GUARD RAIL w/ STEEL POSTS  
 Lt. 544+55-544+71  
 Rt. 536+22-536+78  
 544+55-544+71



B.M. # 20 (old B.M. 5) Chiselled spot on concrete RR culvert headwall, northwest corner, 120' Rt. Sta. 537+72.5 elevation 705.47  
 B.M. # 21 Spot on gas pump foundation, 25' ft. Lt. Sta. 544+00, elevation 797.45  
 B.M. # 22 U.S.G.S. V.15-1935, elevation 790.145

MANCHESTER - DORSET  
 Proj. F. No. 017-2(3)  
 Sheet 17 of 138