

Removal & Dispose of Present Guard Rail  
 LT  
 403+00 - 403+15  
 403+20 - 403+30  
 403+35 - 403+45

PRESENT R.O.W. PURCHASED FROM C. J. LASSOR BY  
 W.D.S. 6/25/41 - BK 41 - PG 207 MANCHESTER  
 APP. SUR. STA 398+71 - 409+50

B.M. # 3  
 Spot on headwall  
 Elev. 790.56

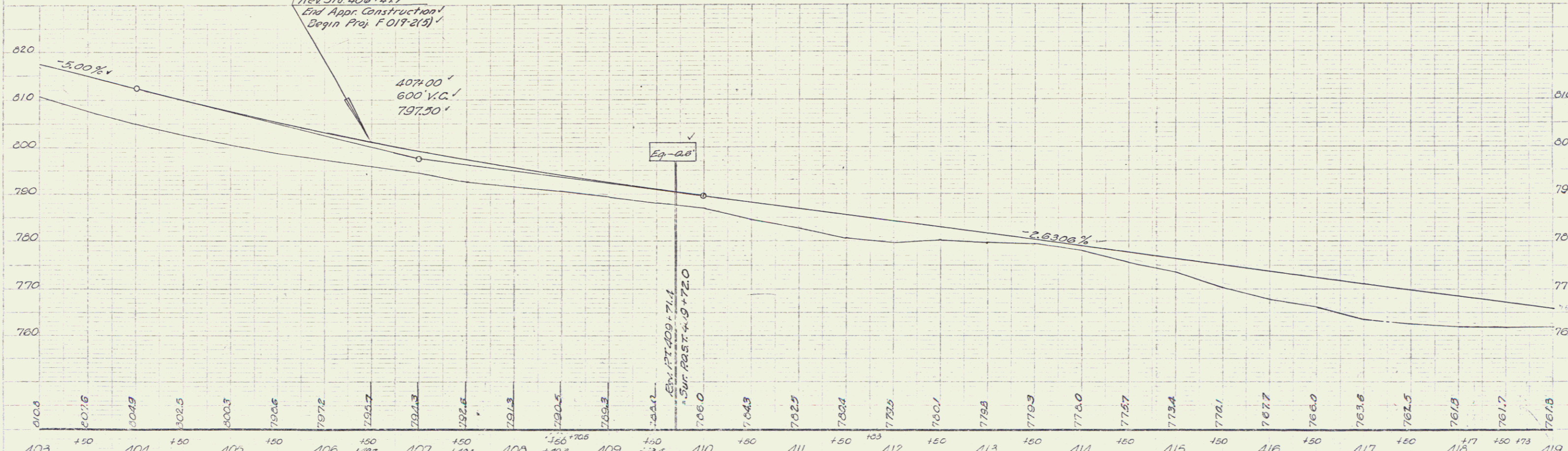
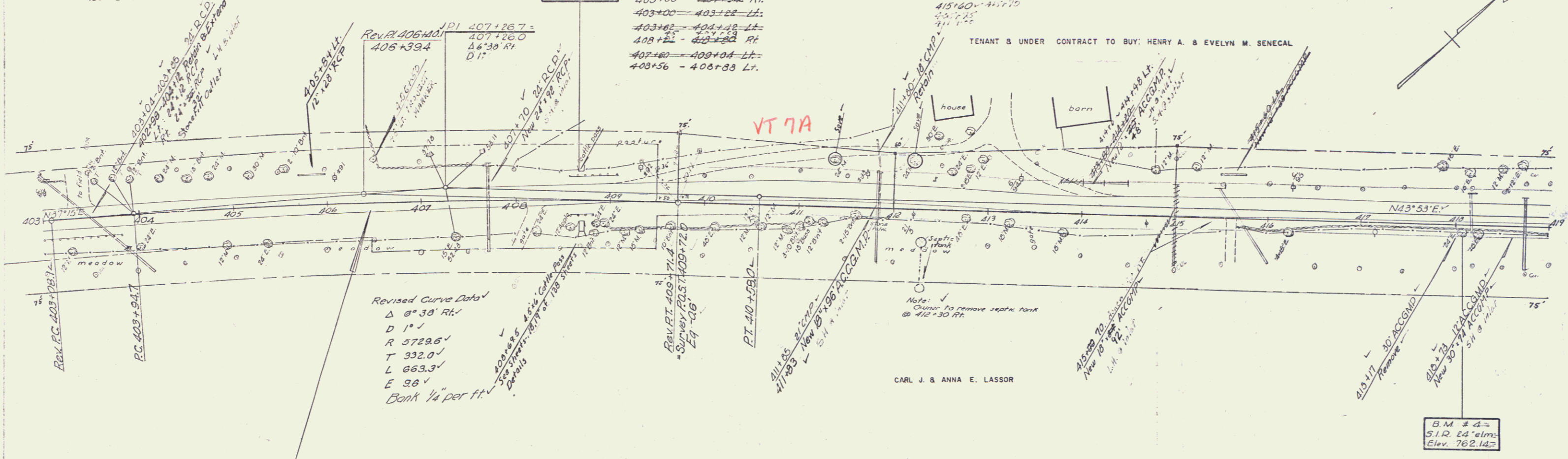
Three Cable Guard Rail with Steel Posts Item 543  
 403+00 - 403+10 RT  
 403+10 - 403+22 LT  
 403+22 - 403+42 LT  
 403+42 - 403+56 RT  
 403+56 - 403+83 LT

Construct Drives  
 LT  
 403+40 - 403+40 V  
 404+00 - 403+42  
 415+00 - 415+10  
 415+10 - 415+10  
 411+15

CARL J. & ANNA E. LASSOR

PLANK GUARD RAIL W PRESATIVE TREATMENT  
 413+30 - 413+70 LT

TENANT & UNDER CONTRACT TO BUY: HENRY A. & EVELYN M. SENEAL



B.M. # 3 Chiselled spot on west headwall cattle pass 24' left sta 406+65, elevation 790.56  
 B.M. # 4 Spike in root 24' elm, 18.5 ft. R. Sta. 416+00, elevation 762.14  
 MANCHESTER - DORSET  
 Proj. E. Nos. 017-2(1)  
 Sheet 9 of 132