

THREE CABLE GUARD RAIL w/ STEEL POSTS
 27
 397+70-403+00
 Removal - Disposal of Present Guard Rail
 398+00-398+30 RT
 399+00-403+00 RT
 PLANK GUARD RAIL w/PRESERVATIVE TREATMENT
 399+27

Construct Approach
 398+00 RT
 #1A NICHOLAS & ELEANOR LEMTUGOV
 (A 0.02) STA 396+00-398+68.2
 W.D.O.E. 12/16/58
 RECORDED: MANCHESTER - BK 52 - PG 286 - 12/19/58

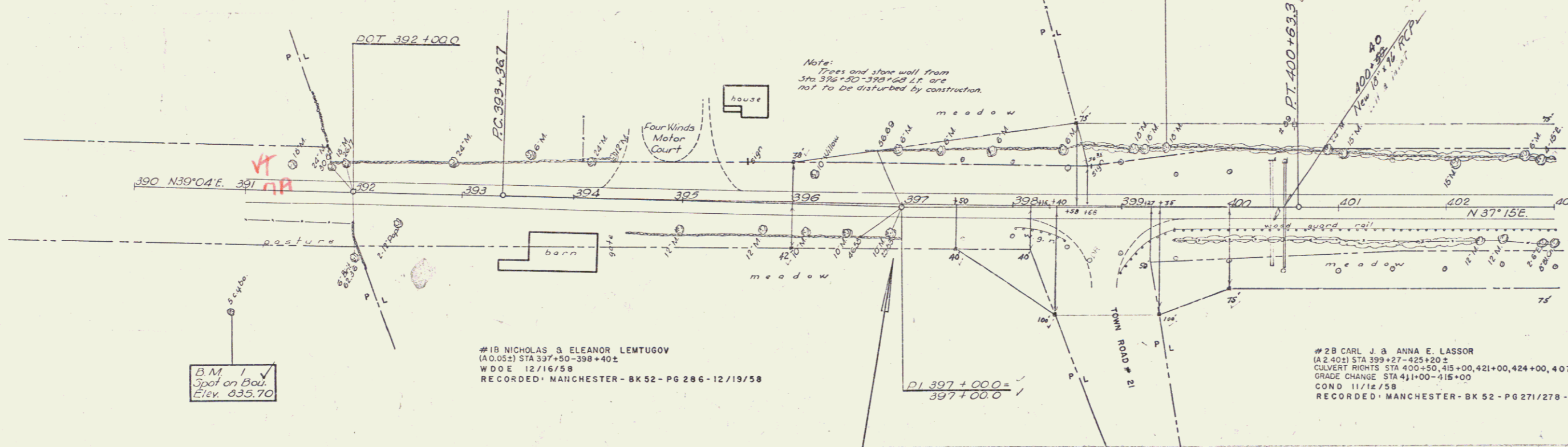
PRESENT ROW PURCHASED FROM H.P. WAY BY
 W.D.O.E. 6-23-41 BK 41 PG 206 MANCHESTER L.R.
 APR SUR. STA 391+76-399+71 E

PRESENT ROW ESTABLISHED BY F.A.P. 92 C (I) 1942
 SUR. STA 391+00-409+50 LT & RT.

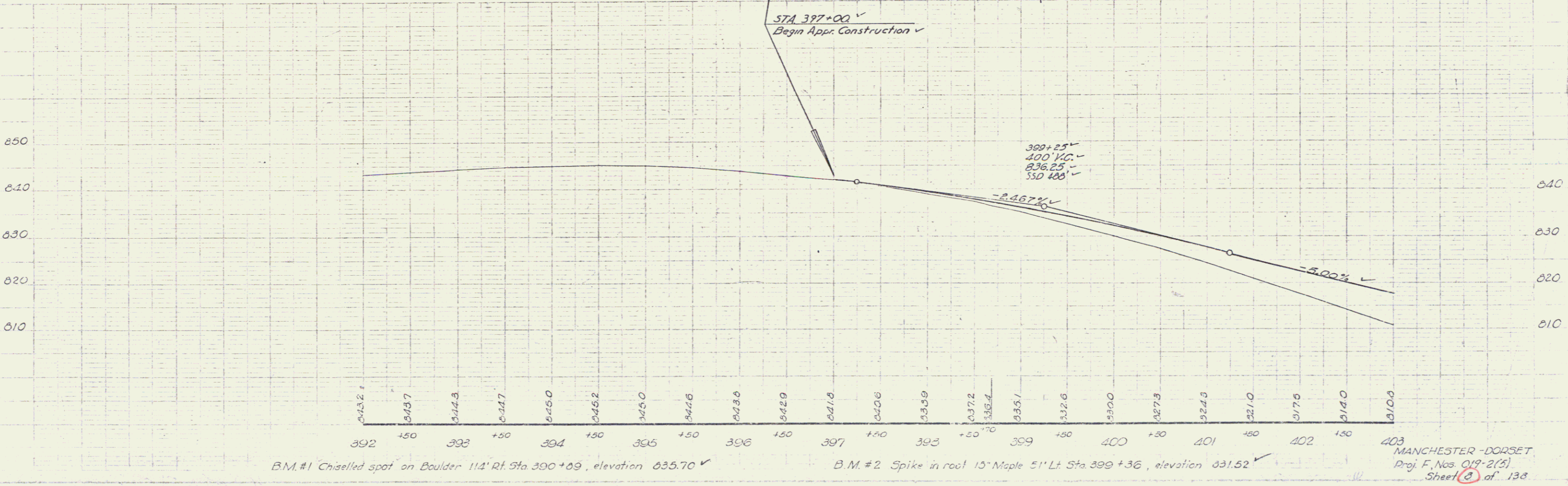
Δ 1° 49' L.A.V
 D 0° 15'
 R 22918.3'
 T 363.3'
 L 726.6'
 E 29'
 Do not Bank

#2A CARL J. & ANNA E. LASSOR
 (A 100) STA 398+58-419+92
 COND. 11/12/58
 RECORDED: MANCHESTER - BK 52 - PG 271/278 - 11/14/58

0-97
 14-57
 14-57
 PLANK
 14-57



0-97
 14-57
 1-58
 PLANK
 1-58



B.M. #1 Chiselled spot on Boulder 114' Rt. Sta. 390+09, elevation 635.70 ✓

B.M. #2 Spike in root 15' Maple 51' Lt. Sta. 399+36, elevation 631.52 ✓

MANCHESTER - DORSET
 Proj. F. Nos. 019-2(3)
 Sheet 2 of 138