

Removal & Disposal Present Guard Rail
477+75 - 500+66 Lt

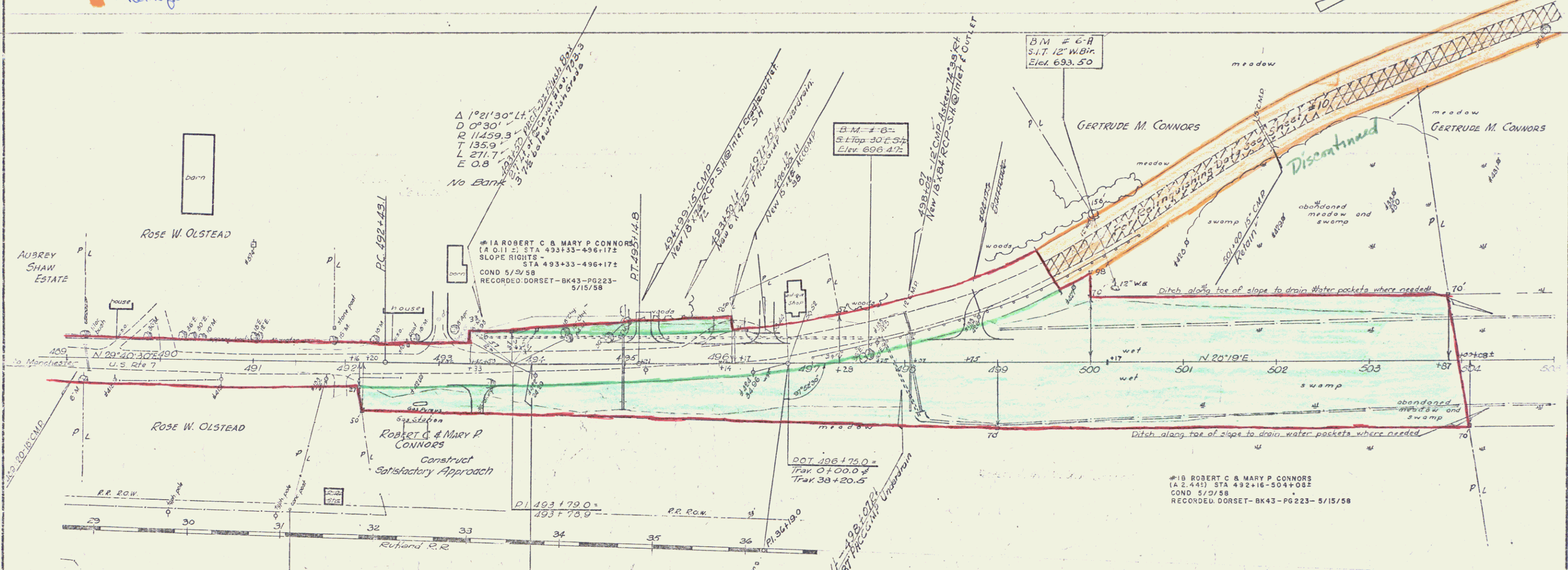
Three-Cable Guard Rail w/ Steel Posts
Item 543-D
496+50 - 498+50 - 200' RT

CONSTRUCT DRIVE
Sta 493+00 Lt
Sta 495+20 Lt
Sta 496+50 Lt
493+42 RT
496+75 Lt

Excavation & Removal of Road Surface
On Discontinued Roadways, Item 118
497+75 - 498+75

- █ = EXISTING ROW LINE
- █ = TAKE AREA for Project F019-2(2)
- █ = Relinquished to town

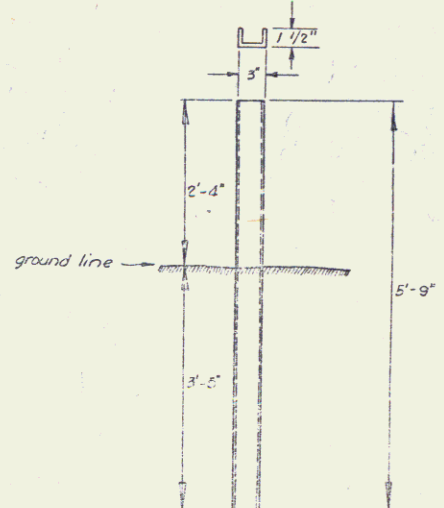
#2 ANNA J FUREY
SLOPE RIGHTS - STA 496+14 - 497+28
WD 6/12/58
RECORDED, DORSET - BK 43-PG 241 - 6/27/58



B.M.#5 (X 10)
Conc. Post
Elev. 704.15

DOT 496+75.0
Trk. 0+00.0
Trk. 30+20.0

#18 ROBERT C & MARY P CONNORS
(A 2.44) STA 492+16 - 504+08
COND. 5/15/58
RECORDED, DORSET - BK 43 - PG 223 - 5/15/58



STEEL MARKER POSTS
Item 543-D
All steel marker posts to be galvanized.
Steel marker posts to be placed at ends
of culverts and underdrain outlets or
as directed by the Engineer.
Posts are to be American Standard Channel
3"-0" x 3", 4.1 lbs. per ft.

DORSET - MT 1460R
Proj. F 019-2(2)
Surveyed: Jewell, 7-35
Plotted: E. Lane - Traced: W.D.
Sheet 8 of 92