

INDEX OF SHEETS

SHEET NO. 1	TITLE PAGE
" 2	TYPICAL CROSS-SECTION OF IMPROVEMENT } BITUMINOUS CONCRETE SURFACE COURSE
" 3	BANKING AND WIDENING TABLES
" 4-6	PLAN AND PROFILE SHEETS
" 7	STANDARD STRUCTURE SHEET 3-28 PIPE CULVERTS
" 8	" " " 3-29 BOX
" 9	" " " 3-30 GUARD RAIL
" 10	BARRECADES, SIGNS, AND LIMITS 3B-11
" 11-14	CROSS SECTIONS

Standard Sheets 3-28 and 3-29 submitted to the Chief Engineer on May 16, 1933.
Standard Sheet 3-30 submitted to the Chief Engineer on Aug. 28, 1933.

DIST. NO.	STATE	ROUTE NO.	PROJECT NO.	SHEET NO.	TOTAL SHEETS
9	VT.	22	1007	1	24

STATE OF VERMONT
STATE HIGHWAY DEPARTMENT

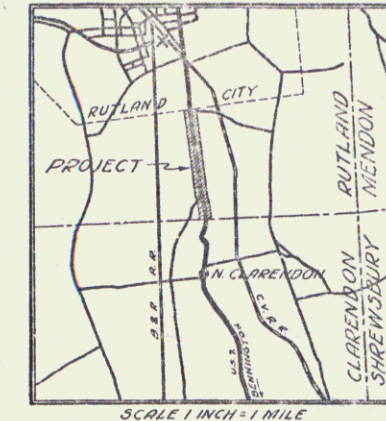
PLAN AND PROFILE OF PROPOSED
STATE HIGHWAY

NATIONAL RECOVERY HIGHWAY PROJECT

TOWN OF RUTLAND Pin# 99R501

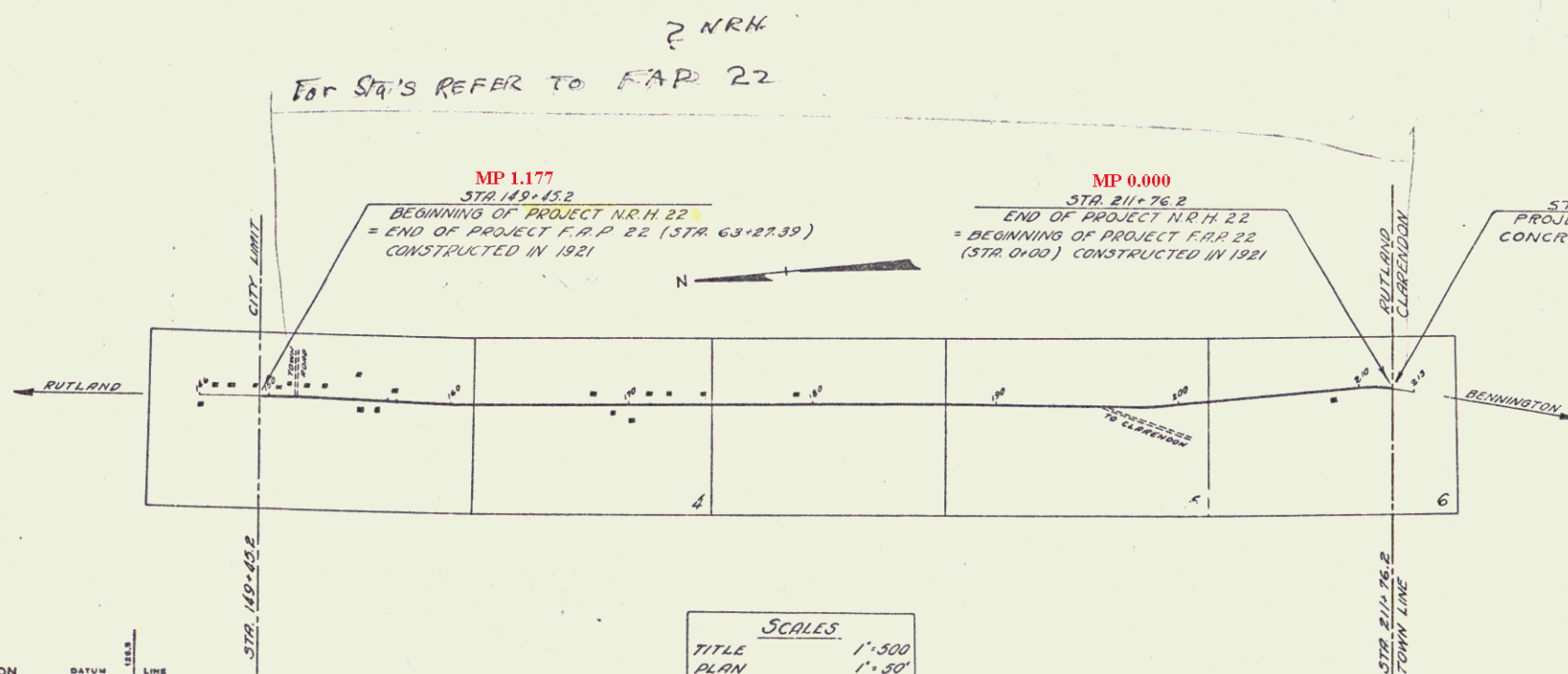
RUTLAND-BENNINGTON ROAD

FROM THE RUTLAND CITY LIMIT SOUTHERLY 1.180
MILES TO THE RUTLAND-CLARENDON TOWN LINE
LENGTH OF PROJECT = 6231.0 FEET = 1.180 MILES



Rutland 30

Rutland
NRH 22



RIGHT-OF-WAY DIVISION
TOWN FILE
PERPETUAL
Rte Rutland US7
(To Be Returned To R.O.W. Division)

APPROVED: *H. Delong*
COMMISSIONER OF HIGHWAYS
SUBMITTED BY ORDER OF THE STATE HIGHWAY BOARD

CONVENTIONAL SIGNS

COUNTY LINE	GROUND ELEVATION
TOWN LINE	GRADE ELEVATION
FENCE LINE	
STONE WALL	
UNFENCED PROPERTY	
GUARD RAIL	
TRAVELED WAY	
RAILROAD	
RETAINING WALL	
CENTER LINE	
SURVEY LINE	
CULVERT	
DROP INLET	
TROLLEY POLE	
POWER POLE	
TELEPHONE POLE	
TREES	
HEDGE	

CURVE DATA

DEFLECTION ANGLE	Δ
DEGREE OF CURVE	D
RADIUS OF CURVE	R
TANGENT DISTANCE	T
LENGTH OF CURVE	L
EXTERNAL DISTANCE	E
POINT OF INTERSECTION	P. I.
POINT OF CURVE	P. C.
POINT OF TANGENT	P. T.
POINT ON TANGENT	P. O. T.

SCALES

TITLE	1" = 500'
PLAN	1" = 30'
PROFILE HOR.	1" = 50'
PROFILE VERT.	1" = 10'
CROSS SECTIONS	1" = 5'

Note -
These plans are subject to such revisions as may be required by the Bureau of Public Roads or the Commissioner of Highways.
Construction is to be carried on in accordance with the Standard Road and Bridge Specifications of 1930 with all subsequent approved revisions and such specifications and special provisions as are submitted with the plans.

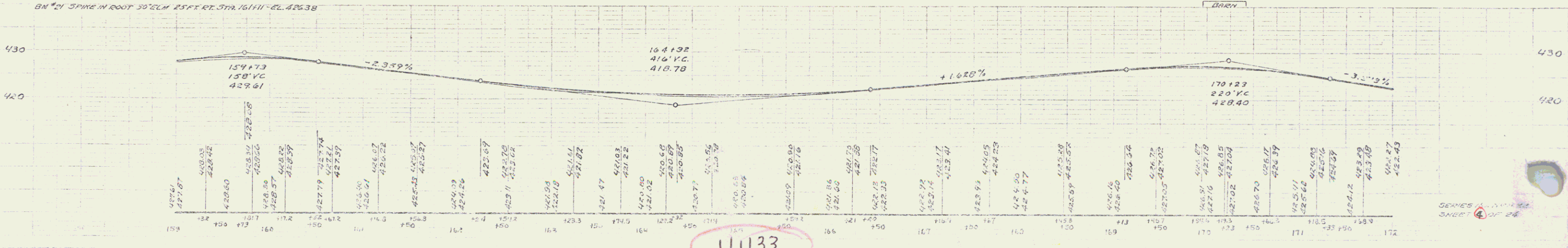
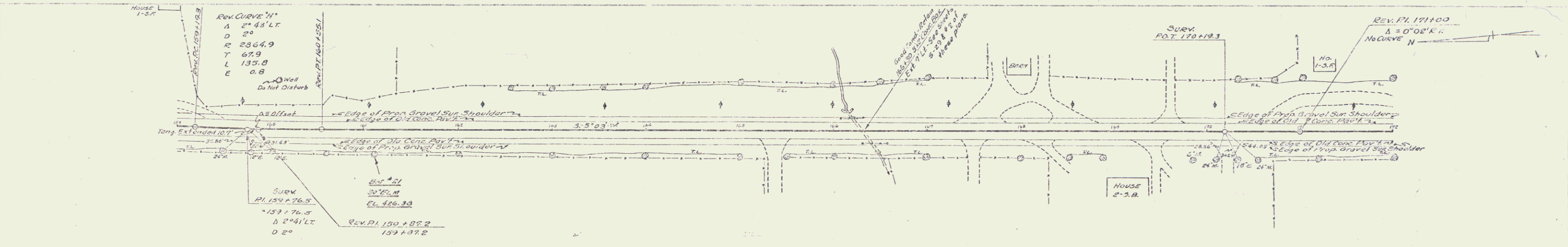
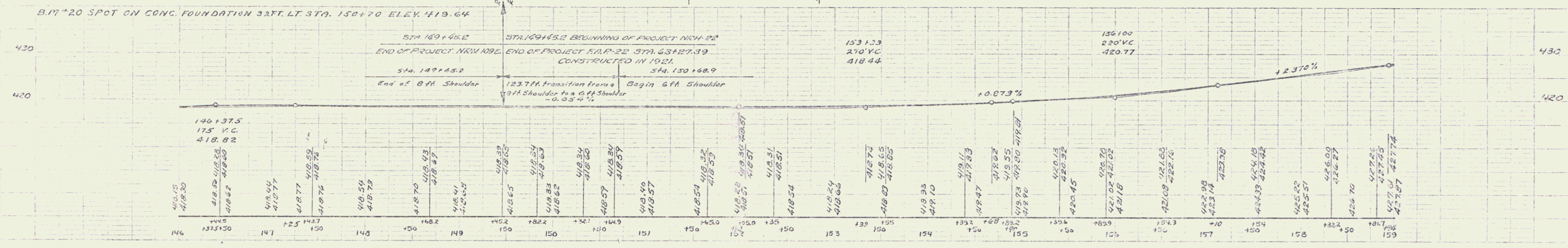
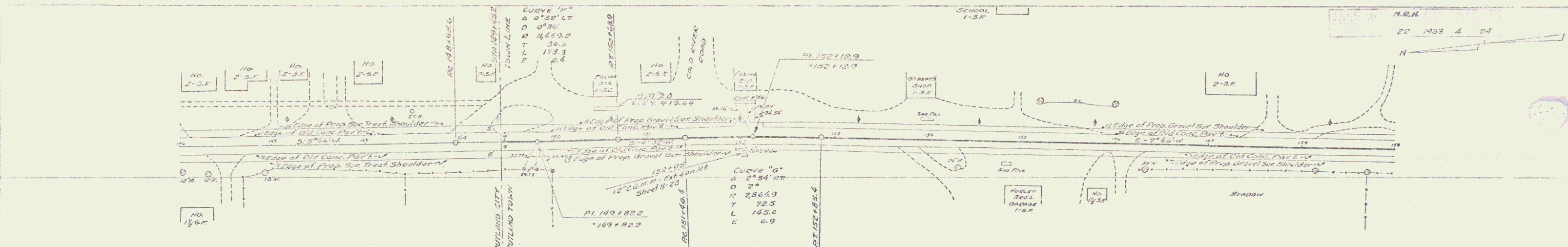
RECOMMENDED: [Signature]
DISTRICT ENGINEER BUREAU OF PUBLIC ROADS

RECOMMENDED FOR APPROVAL: [Signature]
CHIEF ENGINEER BUREAU OF PUBLIC ROADS

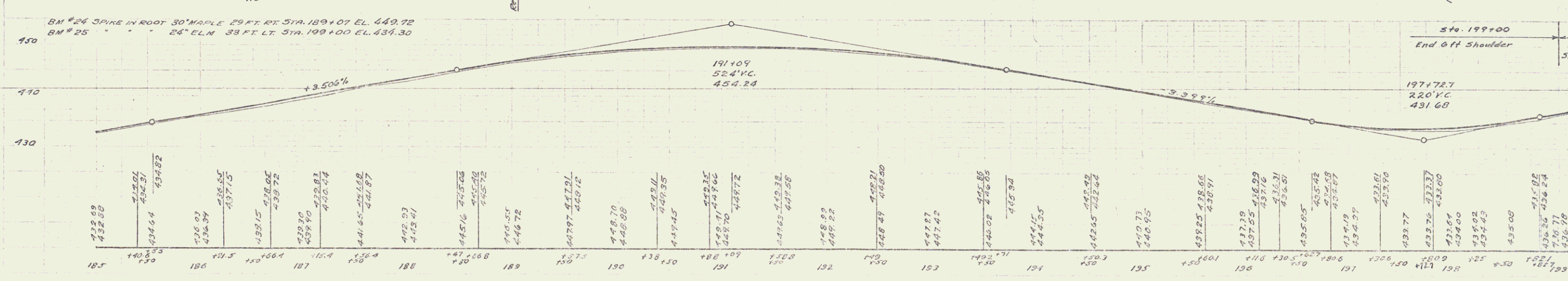
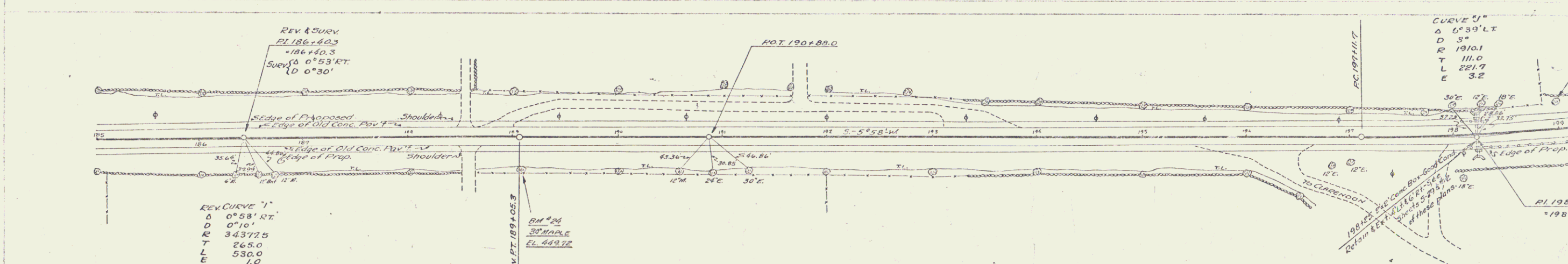
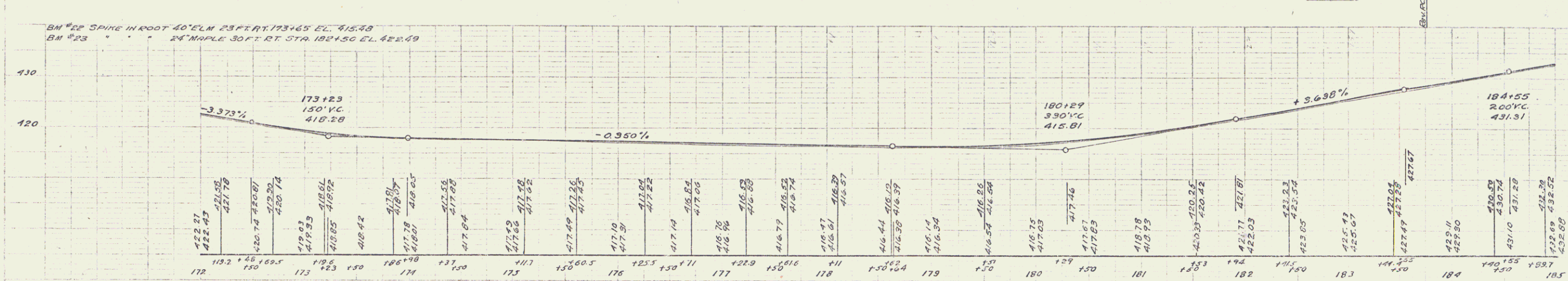
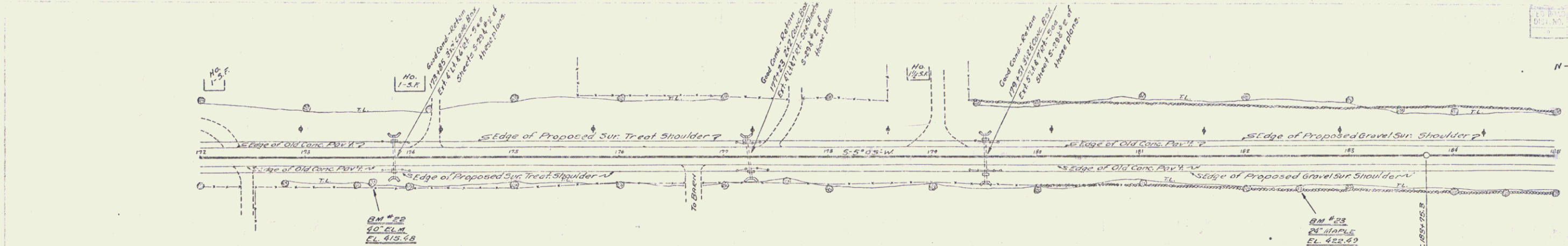
APPROVED: [Signature]
DIRECTOR BUREAU OF PUBLIC ROADS

CORRECT: *99R501* JANUARY 4, 1933
SERIES NRH NO. 22 FILED
SHEET 1 OF 24

DIST. # 3 PLANS



11133



GUARD RAIL REQUIRED

ON LEFT
STATION 13+00 TO STATION 13+60 LENGTH 60'
ON RIGHT
STATION 13+34 TO STATION 13+90 LENGTH 56'

NEW CULVERTS REQUIRED

STA 13+40 18" CURVE WITH HEADWALLS 34'
12-8 CONCRETE 13 CUBIC YDS

PROJECT	STATE	NO. AND DATE	SCALE	SHEET NO.	TOTAL SHEETS
8	VT	22	1920	3	13

TOWN OF CLARENDON
TOWN OF RUTLAND

4 = 45.00'
D = 6.00'
E = 7.00'
L = 75.00'
T = 97.50'

PT. = 25.120

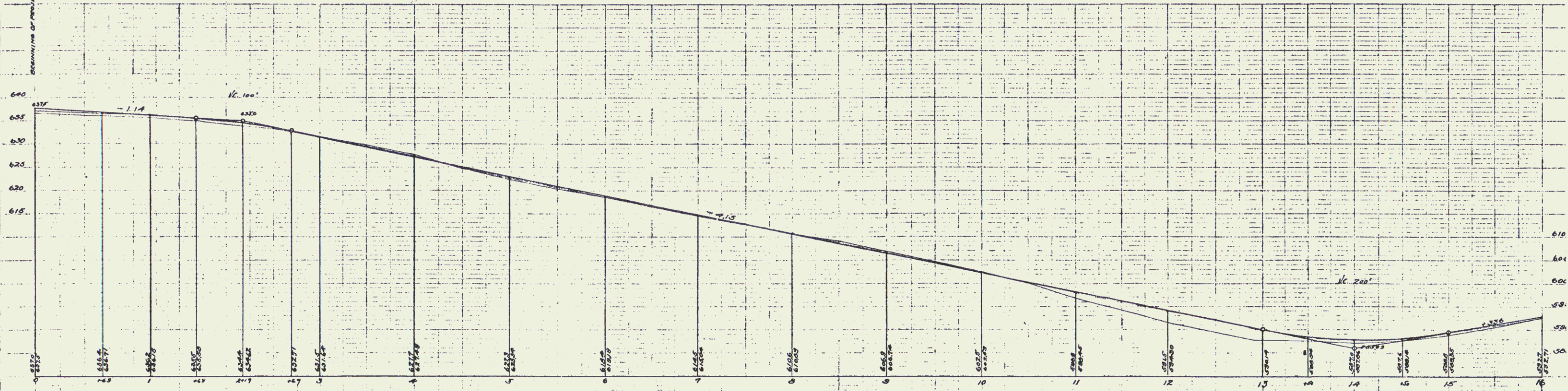
HUGH DUFFY Est

W S CRANTON & HORACE LOBDELL

HEDYER

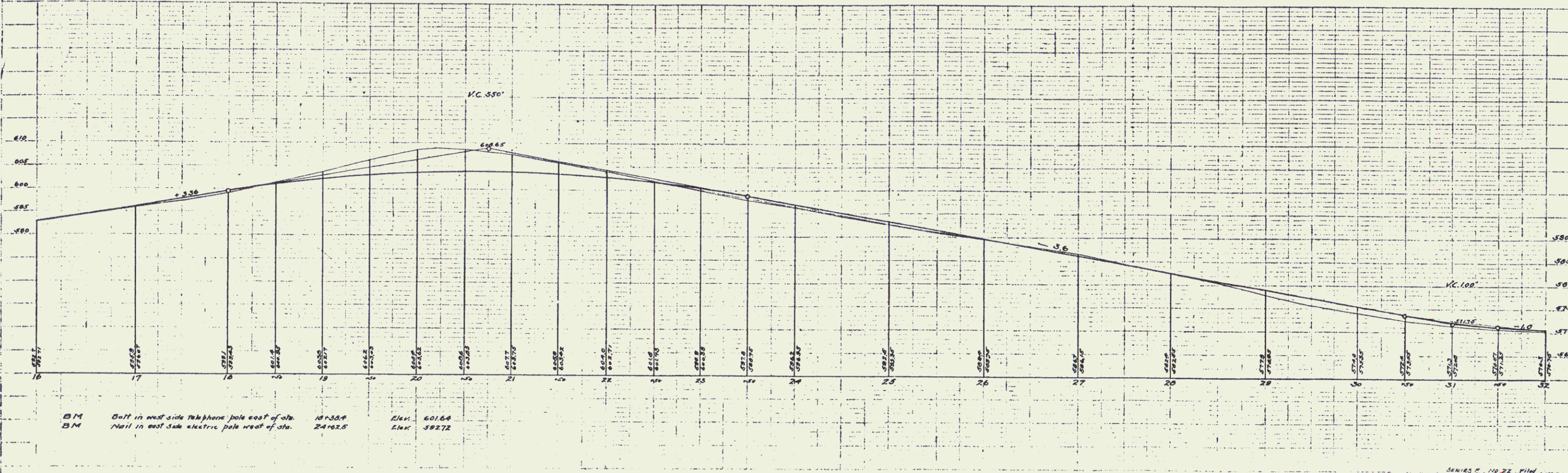
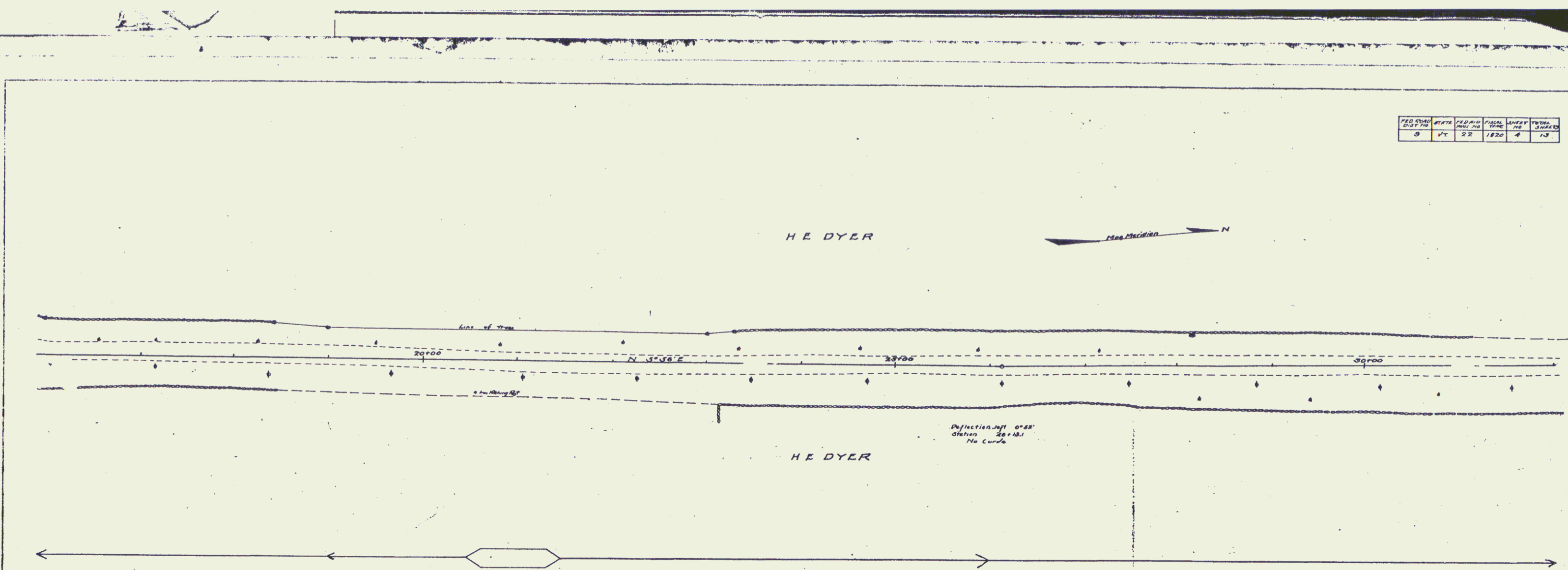
BOUNDARY OF PROJECT STA. 0+00

DIRECTION OF HAUL



BM Top of Marble Monument Rutland-Clarendon, 2000 line, west of Sta. 0+00 Elev 635.60
 BM Nail in outside of electric pole east of Sta. 6+45.7 Elev 616.30

FEED	DATE	STATE	PROJECT	SCALE	DATE	BY	CHKD
3	1/22	VT	1820	4	73		

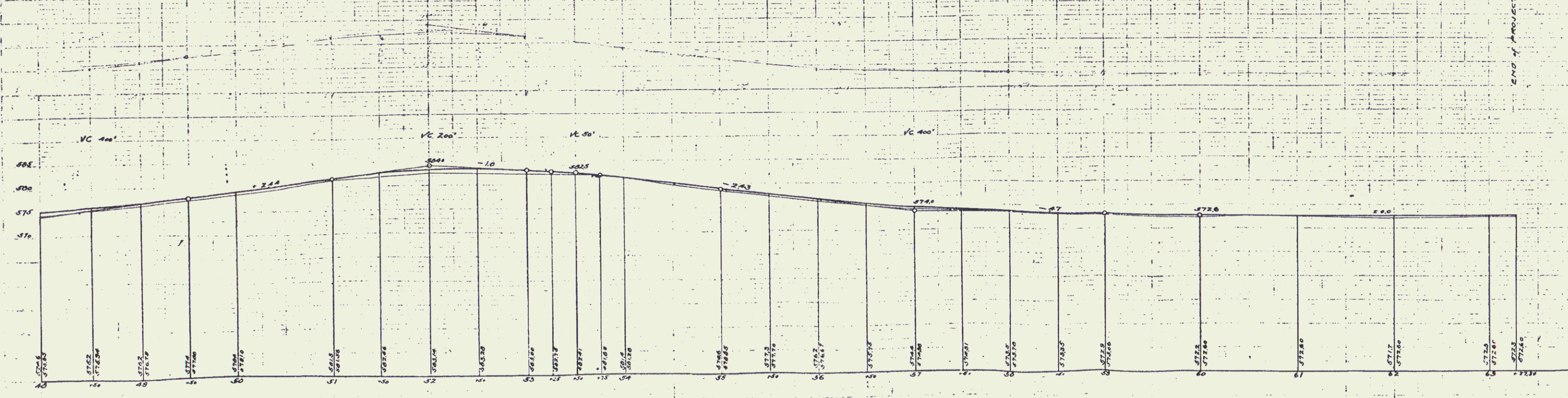
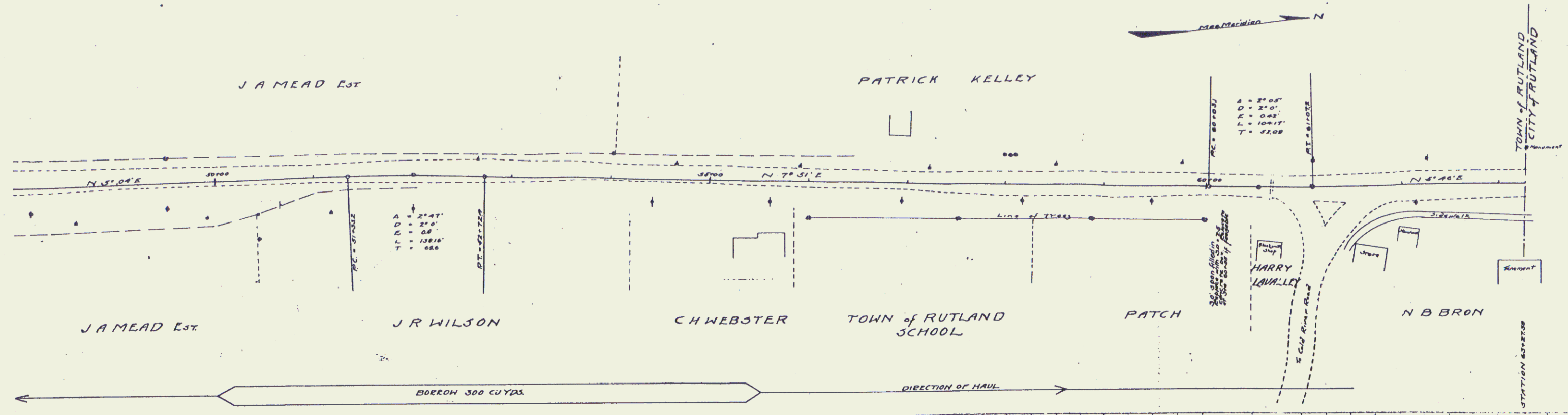


SERIES E - 10 22 - 1110
SHEET 6 of 13

GUARD RAIL REQUIRED
 ON LEFT STATION 60+43 TO STATION 60+67 LENGTH 24'
 ON RIGHT STATION 60+43 TO STATION 60+67 LENGTH 24'
 TOTAL FOR THIS SHEET 48'

NEW CULVERTS REQUIRED
 STATION 60+55 30 x 25 CONCRETE
 12" Concrete 54 cu yds
 12" Reinforcing Steel 1200 lbs.

PERSON	STATE	DATE	PLANT	SHEET
B	VT	22	1920	6



BM Nail in west side telephone pole east of sta 10+154 Elev 576.69
 BM Nail in east side electric pole west of sta 32+864 Elev 580.00
 BM Nail in east side electric pole west of sta 38+785 Elev 572.19
 BM Rutland City-Town monument west sta 63+2788 Elev 573.54

SERIES NO 22 FILED
 34247 VT 15