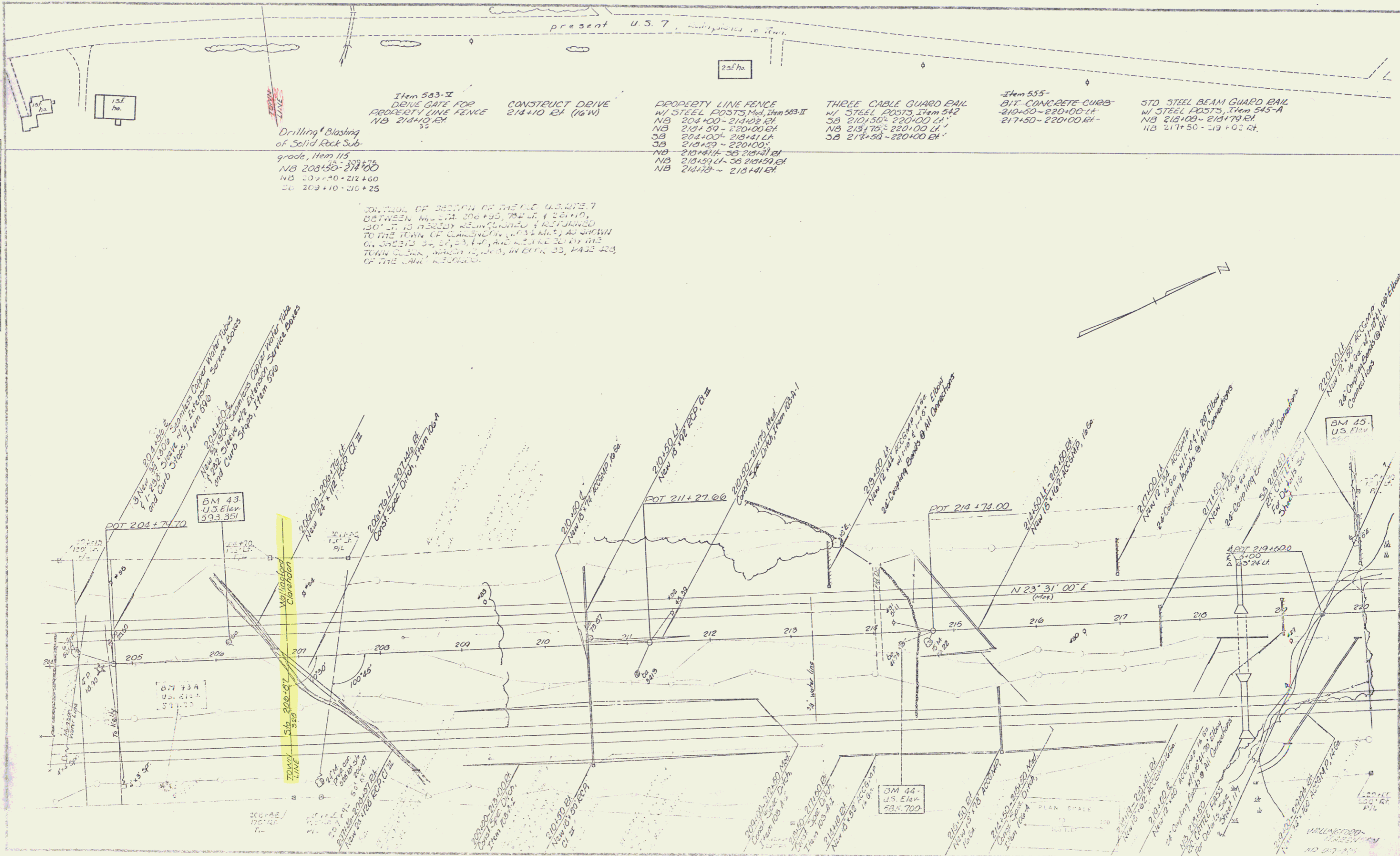


DATE	BY	REVISION



Item 543-3  
 DRIVE GATE FOR  
 PROPERTY LINE FENCE  
 NB 214+10 ET

Drilling & Blasting  
 of Solid Rock Sub-  
 grade, Item 115  
 NB 208+50-214+00  
 NB 209+10-212+60  
 SB 209+10-210+25

CONSTRUCT DRIVE  
 214+10 ET (16'W)

PROPERTY LINE FENCE  
 W/ STEEL POSTS, Mod. Item 543-II  
 NB 204+00-214+00 ET  
 NB 218+50-220+00 ET  
 SB 204+00-214+10 ET  
 SB 218+50-220+00 ET  
 NB 210+10-218+10 ET  
 NB 218+50-220+00 ET  
 NB 214+10-218+10 ET

THREE CABLE GUARD RAIL  
 W/ STEEL POSTS, Item 542  
 SB 210+50-220+00 ET  
 NB 218+75-220+00 ET  
 SB 218+50-220+00 ET

Item 555-  
 BIT CONCRETE CURBS-  
 210+50-220+00 ET  
 217+50-220+00 ET

STD. STEEL BEAM GUARD RAIL  
 W/ STEEL POSTS, Item 545-A  
 NB 218+00-218+79 ET  
 NB 217+50-219+02 ET

CONTROL OF SECTION OF THE U.S. 7  
 BETWEEN MILE 101+95, 102+00, & 104+00,  
 130' W. IS HEREBY RECONVEYED & RETURNED  
 TO THE TOWN OF CLARENCE, N.Y. AS SHOWN  
 ON SHEETS 30, 31, 32, 33, AND 34, BY THE  
 TOWN CLERK, WARDEN H. B. IN DEED, 33, 1933, 34,  
 OF THE LAW, RECORDED.

204+50 et  
 New 1/2" dia. 1000' Spoolless Copper Water Pipes  
 and Curb Stops, Item 500

204+00  
 New 1/2" dia. 1000' Spoolless Copper Water Pipes  
 and Curb Stops, Item 500

BM 43  
 U.S. Elev.  
 593.35 ft

54-208-07  
 54-208-08  
 54-208-09  
 54-208-10  
 54-208-11  
 54-208-12  
 54-208-13  
 54-208-14  
 54-208-15  
 54-208-16  
 54-208-17  
 54-208-18  
 54-208-19  
 54-208-20  
 54-208-21  
 54-208-22  
 54-208-23  
 54-208-24  
 54-208-25  
 54-208-26  
 54-208-27  
 54-208-28  
 54-208-29  
 54-208-30  
 54-208-31  
 54-208-32  
 54-208-33  
 54-208-34  
 54-208-35  
 54-208-36  
 54-208-37  
 54-208-38  
 54-208-39  
 54-208-40  
 54-208-41  
 54-208-42  
 54-208-43  
 54-208-44  
 54-208-45  
 54-208-46  
 54-208-47  
 54-208-48  
 54-208-49  
 54-208-50  
 54-208-51  
 54-208-52  
 54-208-53  
 54-208-54  
 54-208-55  
 54-208-56  
 54-208-57  
 54-208-58  
 54-208-59  
 54-208-60  
 54-208-61  
 54-208-62  
 54-208-63  
 54-208-64  
 54-208-65  
 54-208-66  
 54-208-67  
 54-208-68  
 54-208-69  
 54-208-70  
 54-208-71  
 54-208-72  
 54-208-73  
 54-208-74  
 54-208-75  
 54-208-76  
 54-208-77  
 54-208-78  
 54-208-79  
 54-208-80  
 54-208-81  
 54-208-82  
 54-208-83  
 54-208-84  
 54-208-85  
 54-208-86  
 54-208-87  
 54-208-88  
 54-208-89  
 54-208-90  
 54-208-91  
 54-208-92  
 54-208-93  
 54-208-94  
 54-208-95  
 54-208-96  
 54-208-97  
 54-208-98  
 54-208-99  
 54-208-100

POT 211+27.00  
 New 10" dia. 1000' Spoolless Copper Water Pipes  
 and Curb Stops, Item 500

POT 214+74.00  
 New 10" dia. 1000' Spoolless Copper Water Pipes  
 and Curb Stops, Item 500

POT 218+50.00  
 New 10" dia. 1000' Spoolless Copper Water Pipes  
 and Curb Stops, Item 500

POT 214+74.00  
 New 10" dia. 1000' Spoolless Copper Water Pipes  
 and Curb Stops, Item 500

POT 218+50.00  
 New 10" dia. 1000' Spoolless Copper Water Pipes  
 and Curb Stops, Item 500

POT 214+74.00  
 New 10" dia. 1000' Spoolless Copper Water Pipes  
 and Curb Stops, Item 500

POT 218+50.00  
 New 10" dia. 1000' Spoolless Copper Water Pipes  
 and Curb Stops, Item 500

POT 214+74.00  
 New 10" dia. 1000' Spoolless Copper Water Pipes  
 and Curb Stops, Item 500

POT 218+50.00  
 New 10" dia. 1000' Spoolless Copper Water Pipes  
 and Curb Stops, Item 500

BM 45  
 U.S. Elev.  
 593.35 ft

BM 44  
 U.S. Elev.  
 593.700

PLAN SCALE  
 1" = 40'