

CONCRETE
SLOPE ROADING,
@ 177+00-179+50 LT

STANDARD STEEL BEAM GUARD
RAIL W/ STEEL POSTS, Item 545-A
SB 1'35" RT - 136'07" LT
NB 1'35" RT - 136'07" LT
50

EXCAV & REMOVAL OF ROAD SURFACE
AND/OR PAVEMENTS, ITEM 119
172'00" LT - 174'00" LT

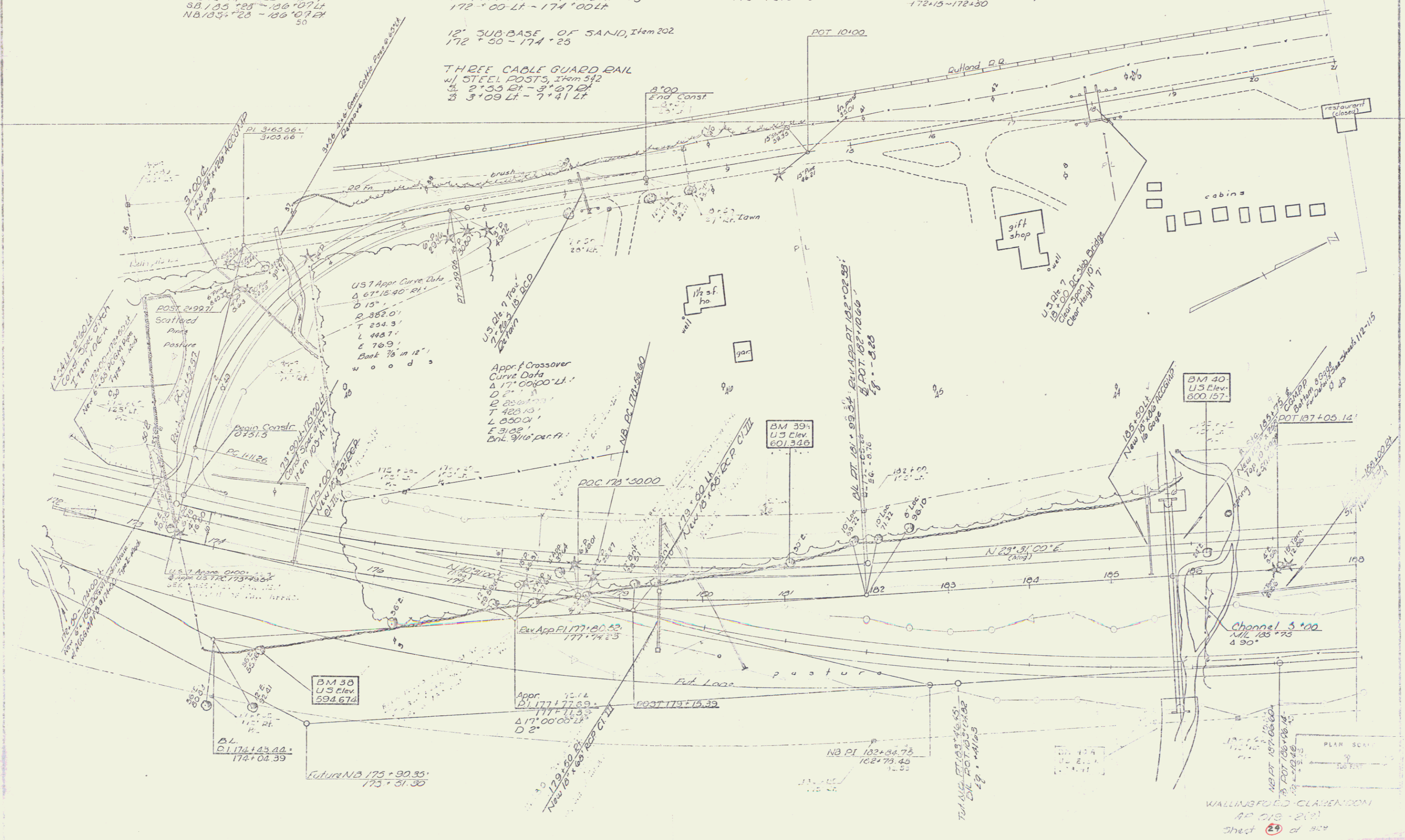
CONSTRUCT APPROACH
173'49'54" LT

STONE FILL FOR SLOPE
PROTECTION (LIGHT TYPE), Item 512
172'15" - 172'50"

12" SUB-BASE OF SAND, Item 202
172'50" - 174'25"

THREE CABLE GUARD RAIL
W/ STEEL POSTS, Item 542
3 2'55" RT - 3'27" LT
3 3'09" LT - 7'41" LT

| | |
|---------|-----------------------|
| DATE | BY |
| SCALE | AS SHOWN |
| PROJECT | WALLINGFORD-CLARENDON |
| NO. | 112-115 |
| REV. | |
| 1 | ISSUED FOR BIDDING |
| 2 | REVISED |
| 3 | REVISED |
| 4 | REVISED |
| 5 | REVISED |
| 6 | REVISED |
| 7 | REVISED |
| 8 | REVISED |
| 9 | REVISED |
| 10 | REVISED |



WALLINGFORD-CLARENDON
AP 018-2(2)
Sheet 29 of 30