

INDEX OF SHEETS

STATE OF VERMONT DEPARTMENT OF HIGHWAYS PROPOSED IMPROVEMENT

FEDERAL AID PROJECT

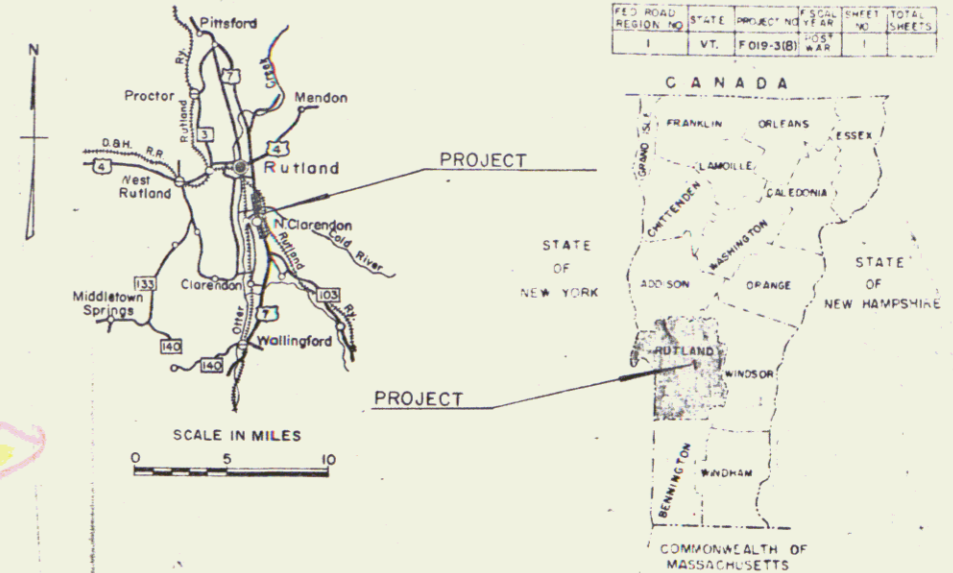
TOWNS OF CLARENDON-RUTLAND

COUNTY OF RUTLAND Pin #. 992 496

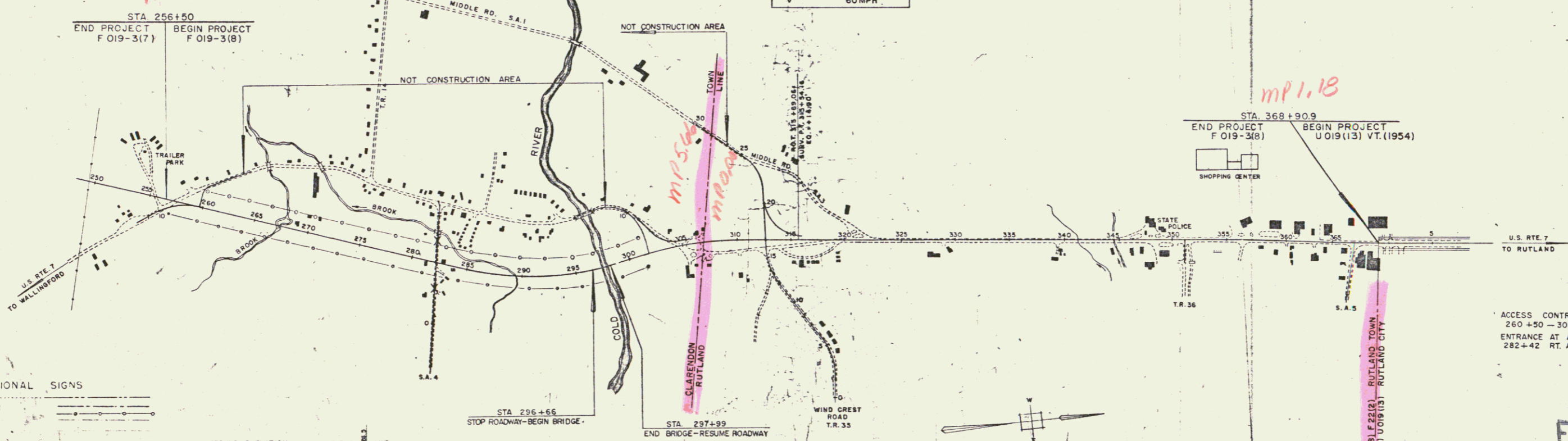
U.S. 7-RUTLAND-BENNINGTON ROAD

BEGINNING AT A POINT 11,255.8 FEET SOUTHERLY OF THE
RUTLAND TOWN-RUTLAND CITY LINE AND EXTENDING
NORTHERLY 11,255.8 FEET.
LENGTH OF ROADWAY 1.16 FEET = 0.2 MILES
LENGTH OF BRIDGES 0.4 FEET = 0.08 MILE
LENGTH OF PROJECT 11,255.8 FEET = 2.132 MILES

DESIGN	DESIGNATION
ADT 1960	4508-6300
ADT 1980	6700-8700
DHV 1980	875-1190
D	60% - 61%
T	6% - 6%
V	60MPH

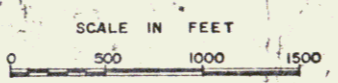


MP 4.70



- CONVENTIONAL SIGNS
- R.O.W.
 - COUNTY LINE
 - ACCESS CONTROL
 - FENCE LINE
 - STONE WALL
 - UNFENCED PROPERTY
 - GUARD RAIL
 - TRAVELED WAY
 - RAILROAD
 - RETAINING WALL
 - CENTER LINE
 - SURVEY LINE
 - CULVERT
 - DROP INLET
 - TROLLEY POLE
 - POWER POLE
 - TELEPHONE POLE
 - TREES
 - WEDGE
 - SLOPE RIGHTS

- GROUND ELEVATION
- GRADE ELEVATION
- CURVE DATA
- DEFLECTION OF ANGLE
 - DEGREE OF CURVE
 - RADIUS OF CURVE
 - TANGENT DISTANCE
 - LENGTH OF CURVE
 - EXTERNAL DISTANCE
 - POINT OF INTERSECTION
 - POINT OF CURVE
 - POINT OF TANGENT
 - POINT ON TANGENT
 - POINT ON SUB-TANGENT
- FEDERAL AID CONSTRUCTION IDENTIFICATION SIGNS.



THESE PLANS ARE SUBJECT TO SUCH REVISIONS AS MAY BE REQUIRED BY THE BUREAU OF PUBLIC ROADS ON THE COMMISSIONER OF HIGHWAYS.

CONSTRUCTION IS TO BE CARRIED ON IN ACCORDANCE WITH THESE PLANS AND THE STANDARD SPECIFICATIONS FOR HIGHWAY AND BRIDGE CONSTRUCTION DATED APRIL, 1964 AS APPROVED BY THE BUREAU OF PUBLIC ROADS ON OCT. 12, 1964 INCLUDING ALL SUBSEQUENT APPROVED REVISIONS AND SUCH REVISED SPECIFICATIONS AND SPECIAL PROVISIONS AS ARE INCORPORATED IN THESE PLANS.

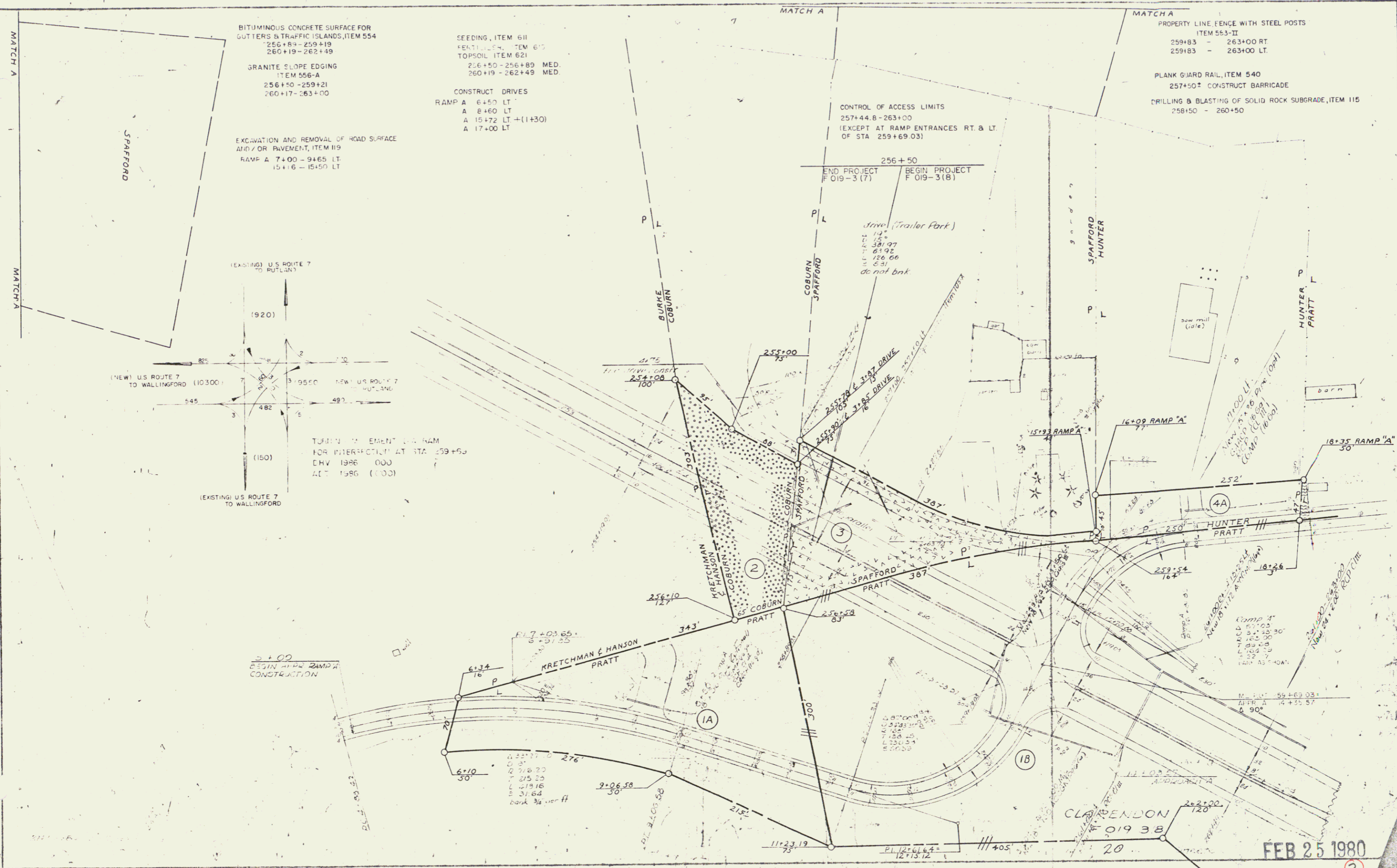
ACCESS CONTROL
260+50 - 301+50
ENTRANCE AT APPROACH
282+42 RT. AND LT.

FEB 25 1980

DEPARTMENT OF COMMERCE
BUREAU OF PUBLIC ROADS

APPROVED: *[Signatures]*
DATE: 12/27/63

PROJECT F NO. 019-3181
SHEET 1 OF SHEETS



BITUMINOUS CONCRETE SURFACE FOR
GUTTERS & TRAFFIC ISLANDS, ITEM 554
256+84 - 259+19
260+19 - 262+49

GRANITE SLOPE EDGING
ITEM 556-A
256+50 - 259+21
260+17 - 263+00

EXCAVATION AND REMOVAL OF ROAD SURFACE
AND/OR PAVEMENT, ITEM 119
RAMP A 7+00 - 9465 LT
15+46 - 15+50 LT

SEEDING, ITEM 611
FERTILIZER, ITEM 610
TOPSOIL, ITEM 621
256+50 - 256+89 MED.
260+19 - 262+49 MED.

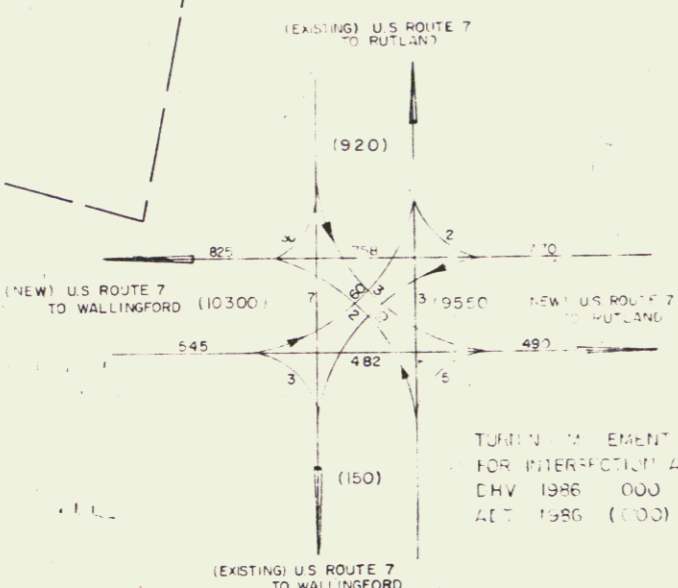
CONSTRUCT DRIVES
RAMP A 6+50 LT
A 8+60 LT
A 15+72 LT (1+30)
A 17+00 LT

CONTROL OF ACCESS LIMITS
257+44.8 - 263+00
(EXCEPT AT RAMP ENTRANCES RT. & LT.
OF STA 259+69.03)

PROPERTY LINE, FENCE WITH STEEL POSTS
ITEM 553-II
259+83 - 263+00 RT.
259+83 - 263+00 LT.

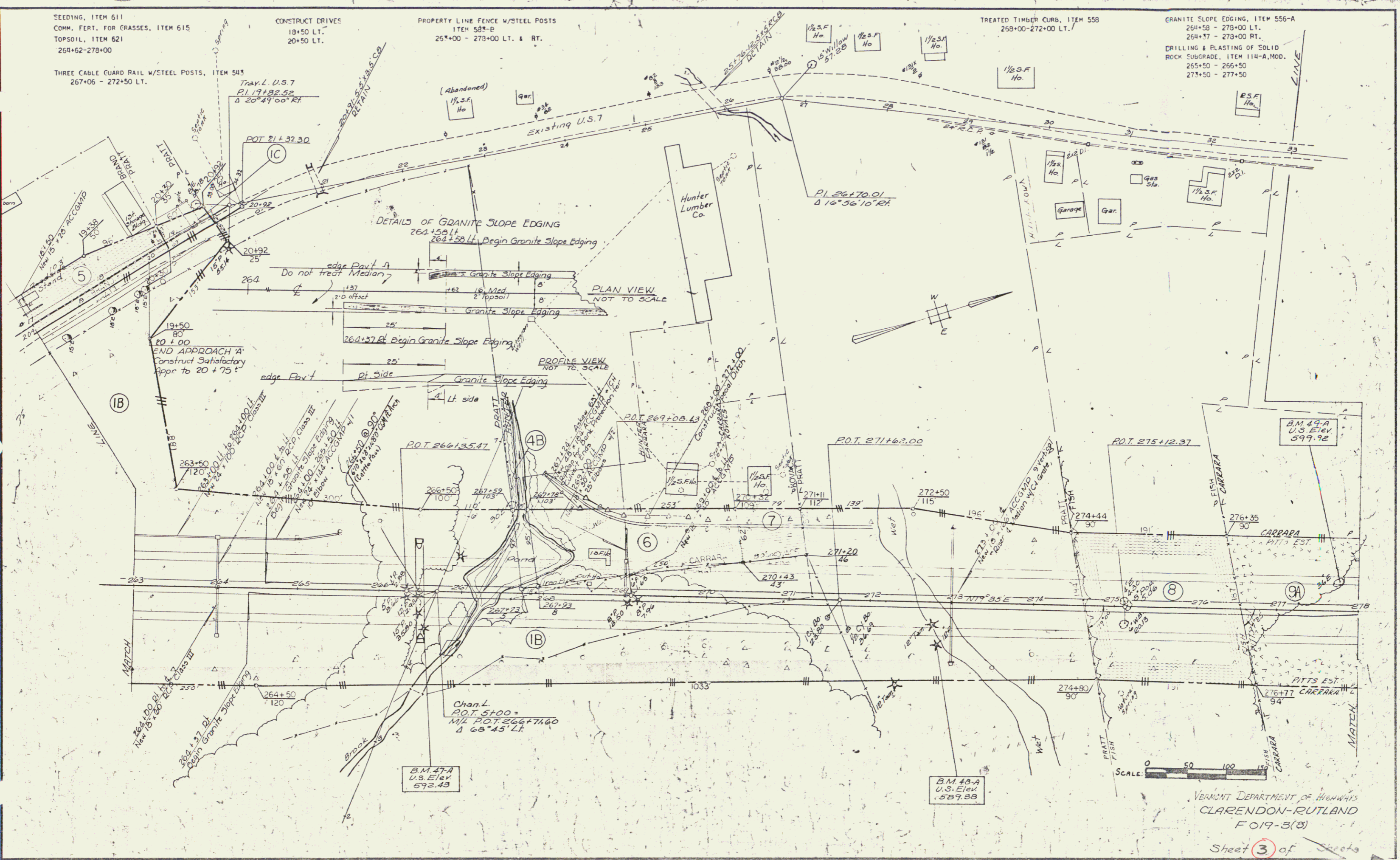
PLANK GUARD RAIL, ITEM 540
257+50+ CONSTRUCT BARRICADE

DRILLING & BLASTING OF SOLID ROCK SUBGRADE, ITEM 115
258+50 - 260+50



FEB 25 1980

PLAN
 1/4" = 100'
 SECTION
 1/4" = 10'
 ELEVATION
 1/4" = 10'



SEEDING, ITEM 611
 COMM. FERT. FOR GRASSES, ITEM 615
 TOPSOIL, ITEM 621
 264+62-278+00

CONSTRUCT DRIVES
 18+50 LT.
 20+50 LT.

PROPERTY LINE FENCE W/STEEL POSTS
 ITEM 581-B
 264+00 - 273+00 LT. & RT.

TREATED TIMBER CURB, ITEM 558
 268+00-272+00 LT.

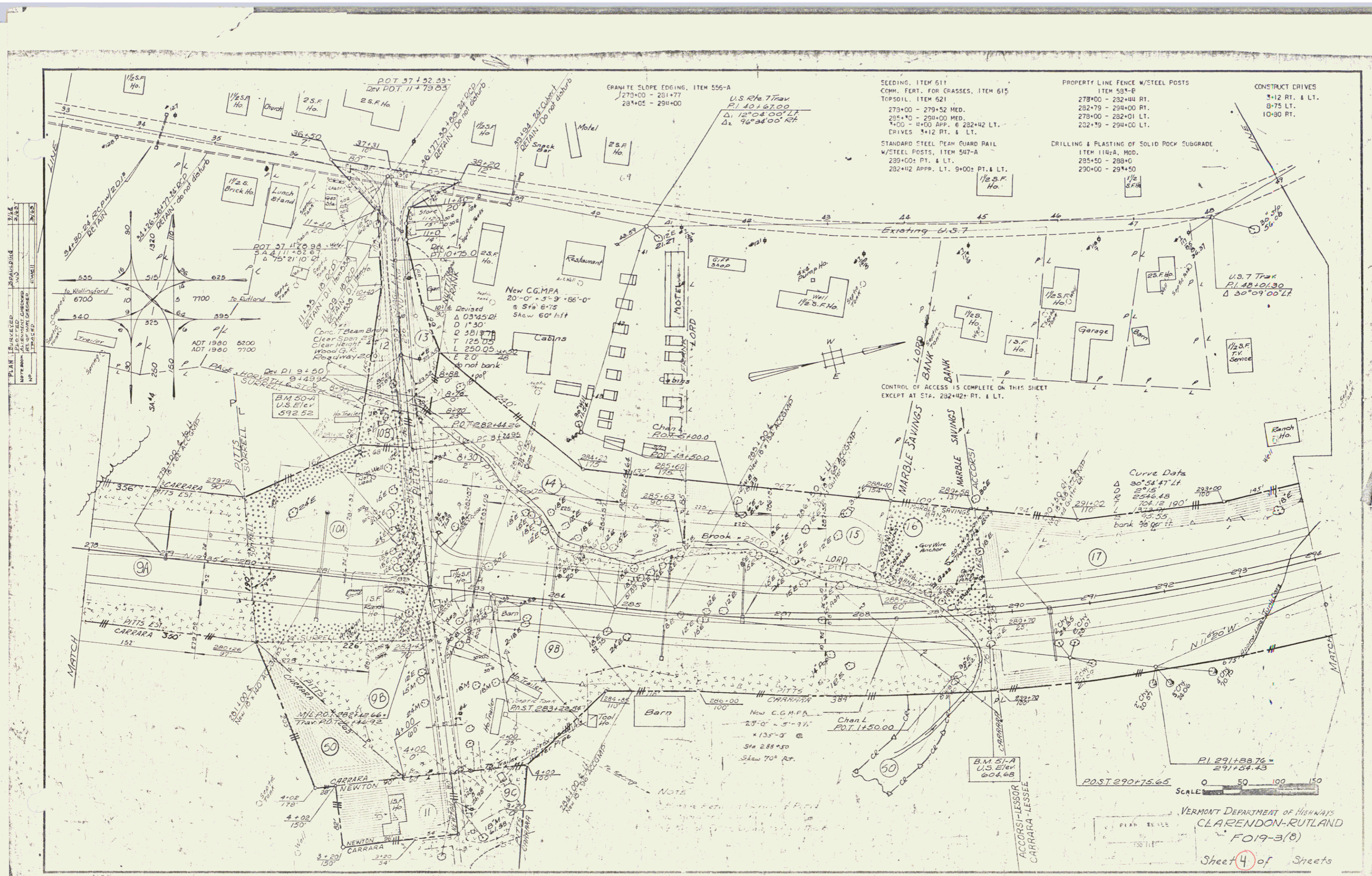
GRANITE SLOPE EDGING, ITEM 556-A
 264+58 - 273+00 LT.
 264+37 - 273+00 RT.
 DRILLING & BLASTING OF SOLID
 ROCK SUBGRADE, ITEM 114-A, MOD.
 265+50 - 266+50
 273+50 - 277+50

THREE CABLE GUARD RAIL W/STEEL POSTS, ITEM 543
 267+06 - 272+50 LT.

VERMONT DEPARTMENT OF HIGHWAYS
 CLARENDON-RUTLAND
 F 019-3(B)

Sheet 3 of 3

FEB 25 1961



- SEEDING, ITEM 611
- CONV. FERT. FOR GRASSES, ITEM 615
- TOPSOIL, ITEM 521
- 270+00 - 270+52 MED.
- 275+00 - 275+00 MED.
- 280+00 - 280+00 MED.
- 285+00 - 285+00 MED.
- 290+00 - 290+00 MED.
- DRIVES 3x12 RT. & LT.
- STANDARD STEEL BEAM GUARD RAIL W/STEEL POSTS, ITEM 517-A
- 289+00: PT. & LT.
- 292+42 APPR. LT. 9+00: PT. & LT.
- ITEM 511-B
- 278+00 - 282+00 RT.
- 282+79 - 290+00 RT.
- 278+00 - 282+01 LT.
- 282+79 - 290+00 LT.
- DRILLING & PLASTING OF SOLID ROCK SUBGRADE, ITEM 114-A, MOD.
- 285+50 - 288+00
- 290+00 - 291+50
- CONSTRUCT DRIVES
- 3x12 RT. & LT.
- 8x75 LT.
- 10x90 RT.

Curve Data
 30°54'47" LT
 271.5'
 2546.48
 204.75 190'
 322.87
 95.55
 bank 70' RT.

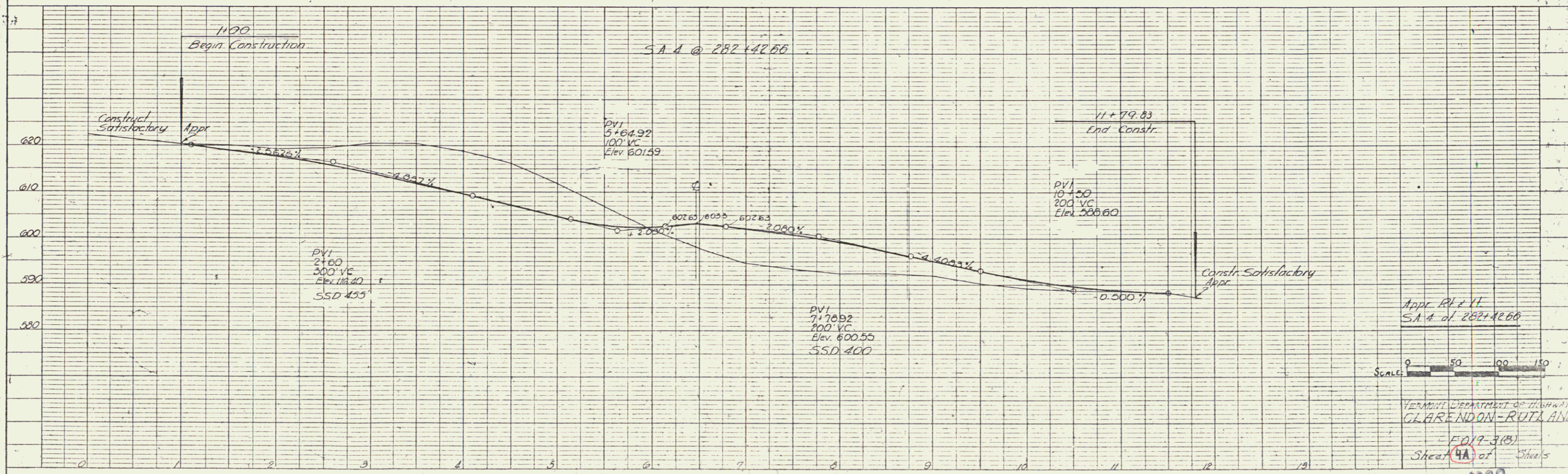
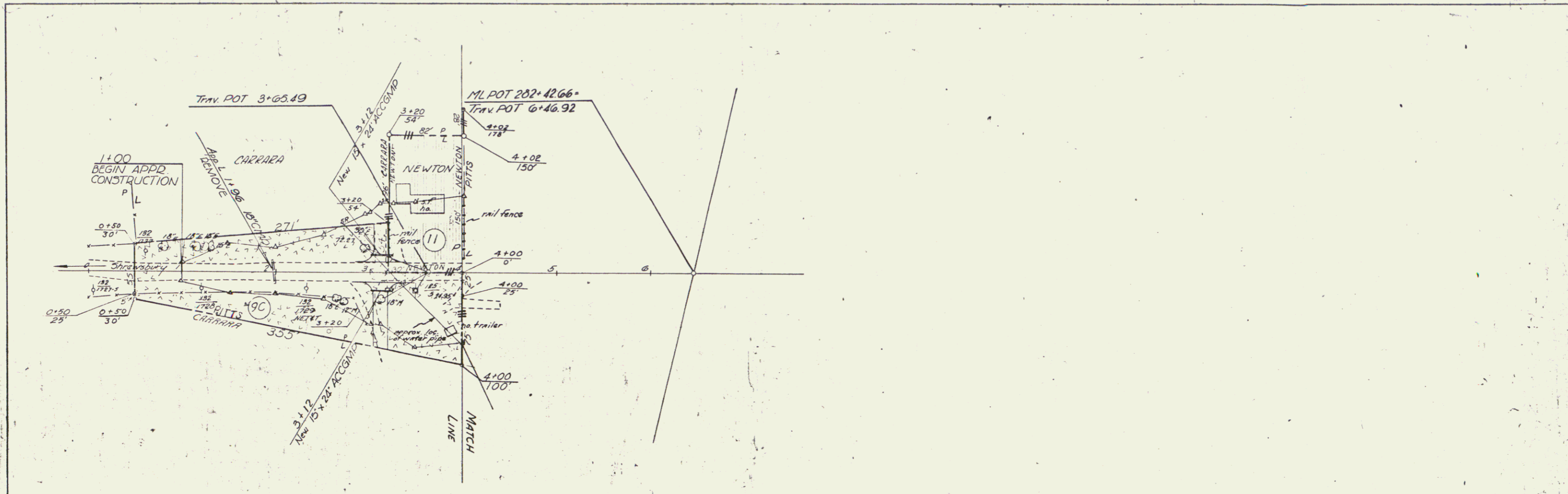
PI 291+88.76 = 291+54.43
 POST 290+75.65
 SCALE 0 50 100 150

VERMONT DEPARTMENT OF HIGHWAYS
 CLARENDON-RUTLAND
 FO19-3(B)
 Sheet 4 of Sheets

FEB 25 1980 4

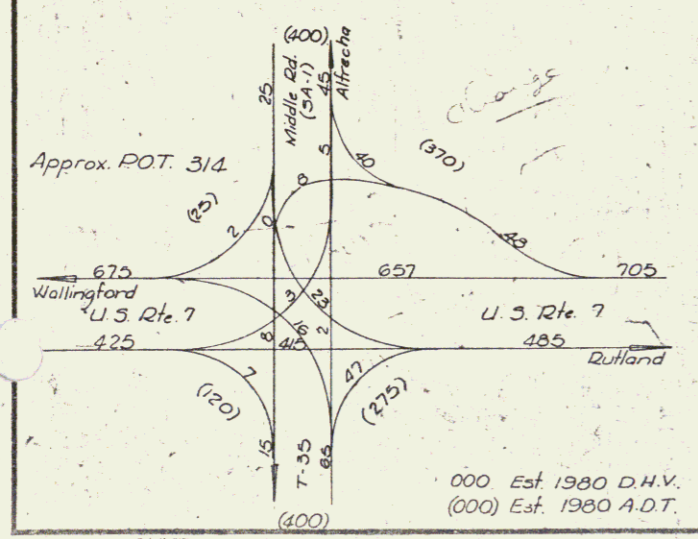
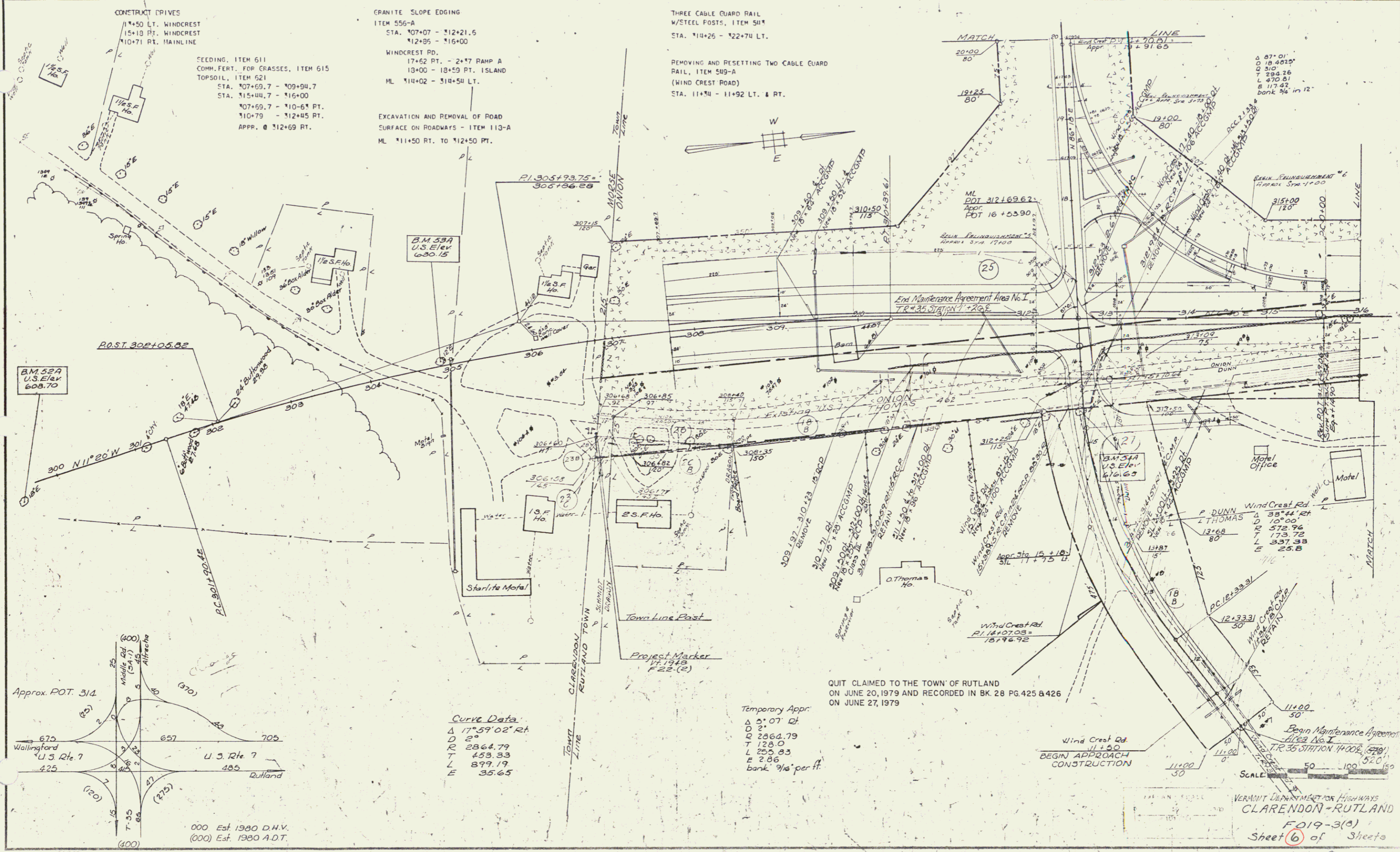
DATE	
BY	
DESIGNED	
CHECKED	
IN CHARGE	
NO.	
PLAN	
REVISIONS	
NO.	
DATE	
BY	
DATE	
BY	

DATE	
BY	
DESIGNED	
CHECKED	
IN CHARGE	
NO.	
PROFILE	
REVISIONS	
NO.	
DATE	
BY	
DATE	
BY	



APPX. PLY. 11
 SA # of 282+42.66
 VERMONT DEPARTMENT OF HIGHWAYS
 CLARENDON-RUTLAND
 ROAD 31(B)
 Sheet 9A of 11
 FEB 25 1977

PLAN	REVISED	DATE	BY
NO.	DESCRIPTION		
1	AS SHOWN	2/13/80	WJ
2	REVISION		
3	REVISION		
4	REVISION		
5	REVISION		



Curve Data
 Δ 17° 59' 02" Rt.
 D 2°
 R 2864.79
 T 128.0
 L 255.83
 E 897.19
 E 35.65

Temporary Appr.
 Δ 5° 07' Lt.
 D 2°
 R 2864.79
 T 128.0
 L 255.83
 E 897.19
 E 35.65
 bank 3/4" per ft

QUIT CLAIMED TO THE TOWN OF RUTLAND
 ON JUNE 20, 1979 AND RECORDED IN BK. 28 PG. 425 & 426
 ON JUNE 27, 1979

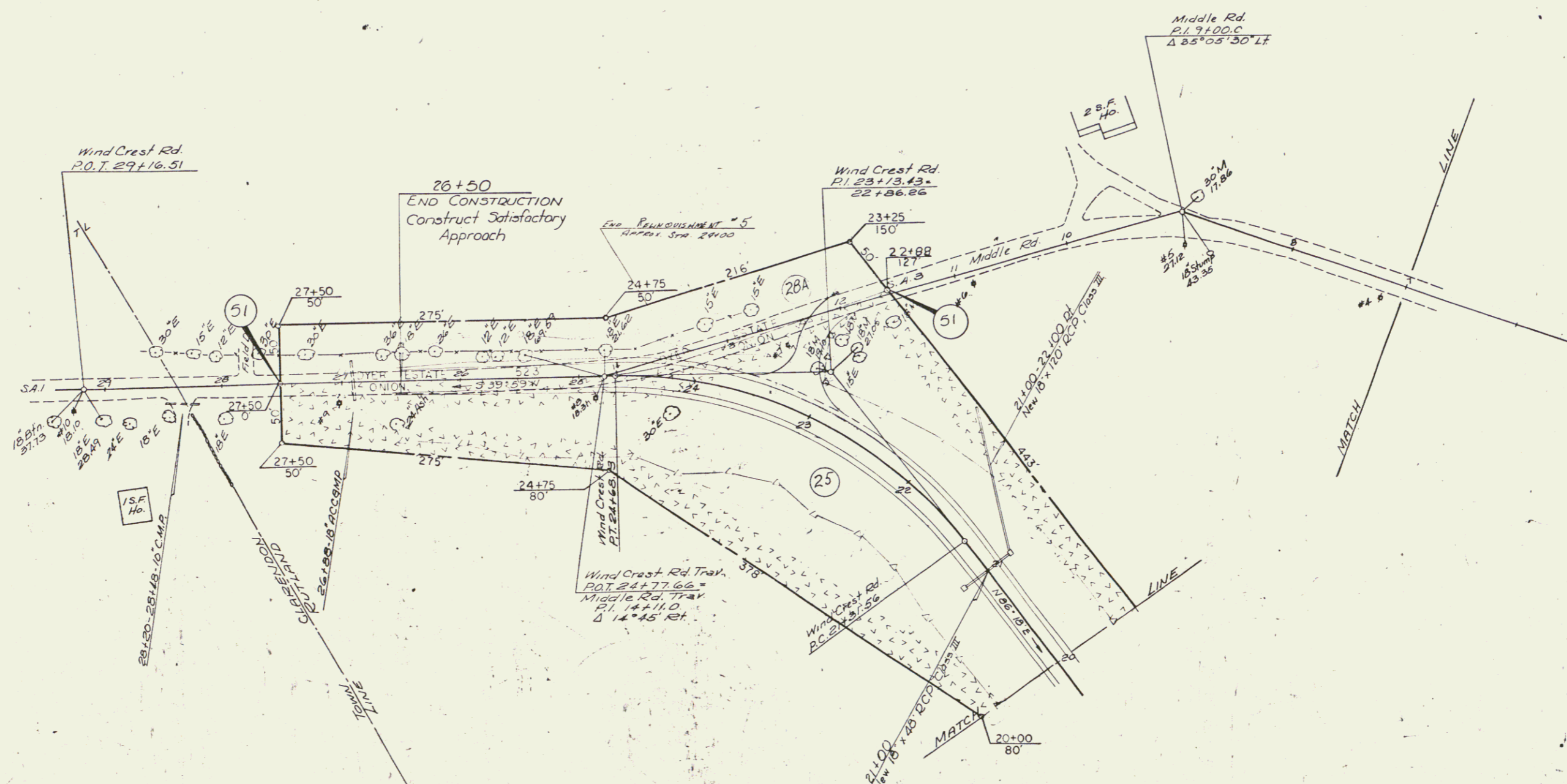
Wind Crest Rd.
 11+50
 BEGIN APPROACH
 CONSTRUCTION

SCALE 1" = 50'
 VERMONT DEPARTMENT OF HIGHWAYS
 CLARENDON - RUTLAND
 F019-3(3)
 Sheet 6 of 8
 FEB 25 1980

EXCAVATION & REMOVAL OF ROAD SURFACE
ON ROADWAY, ITEM 118-A
23+25 - 24+15 ± RT.

CONSTRUCT APPROACH
23+25

PLAN	DATE	BY
REVISED		
APPROVED		
DATE		
BY		
DATE		



Curve Data
Wind Crest Rd.
A 53° 51' Lt.
D 165.00
R 351.85
L 131.87
E 43.30
bank 1/8 per ft.

SCALE: 0 50 100 150

MIDDLE & WIND CREST ROADS
VERMONT DEPARTMENT OF HIGHWAYS
CLARENDON-RUTLAND
FO19-3(B)
FEB 25 1980 Sheet 6A of 8 sheets

SEEDING, ITEM 611
 COMM. FERT., ITEM 615
 TOPSOIL, ITEM 621
 *16+00 - *12+00 ISLAND
 *18+50 - *20+00 PT.

GRANITE SLOPE EDGING
 ITEM 556-A
 *16+00 - *12+00

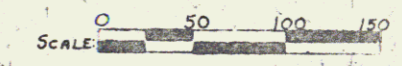
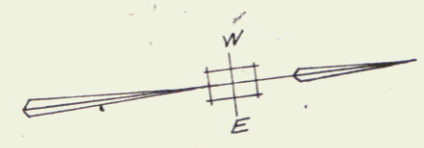
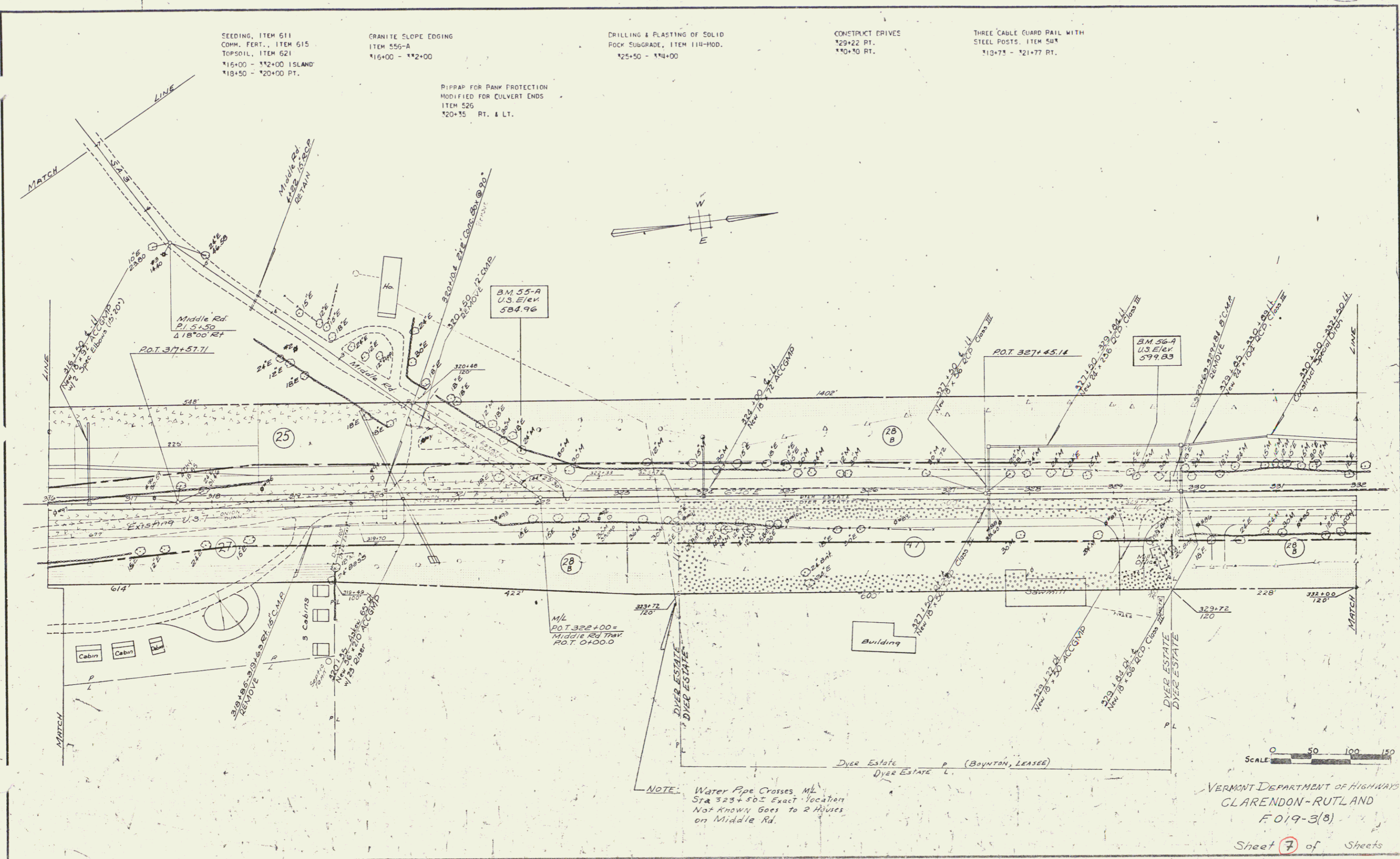
DRILLING & FLASTING OF SOLID
 ROCK SUBGRADE, ITEM 114-MOD.
 *12+50 - *14+00

CONSTRUCT DRIVES
 *29+22 RT.
 *10+30 RT.

THREE CABLE GUARD RAIL WITH
 STEEL POSTS, ITEM 50*
 *13+73 - *21+77 RT.

PIPPAD FOR BANK PROTECTION
 MODIFIED FOR CULVERT ENDS
 ITEM 526
 *20+35 RT. & LT.

NOTE FROM PLANNING CHECKED BY FIELD NO. 11/2/88



VERMONT DEPARTMENT OF HIGHWAYS
 CLARENDON-RUTLAND
 F 019-3(B)
 Sheet 7 of Sheets

FEB 25 1988

9

CONSTRUCT DRIVES
 339+22 RT.
 345+00 LT.
 345+92 RT.
 346+77 LT.

SEEDING ITEM 611
 COMM. FERT. ITEM 615
 TOPSOIL, ITEM 621
 332+00 - 342+50 ISLANDS
 339+70 - 340+00 RT.
 343+75 - 344+92 RT.
 344+10 - 345+04 RT.
 346+00 - 343+00 RT.
 345+50 - 346+65 LT.
 347+08 - 343+00 LT.

RIPRAP FOR BANK PROTECTION
 MODIFIED FOR CULVERT ENDS, ITEM 526
 341+06 RT.
 344+60 RT.

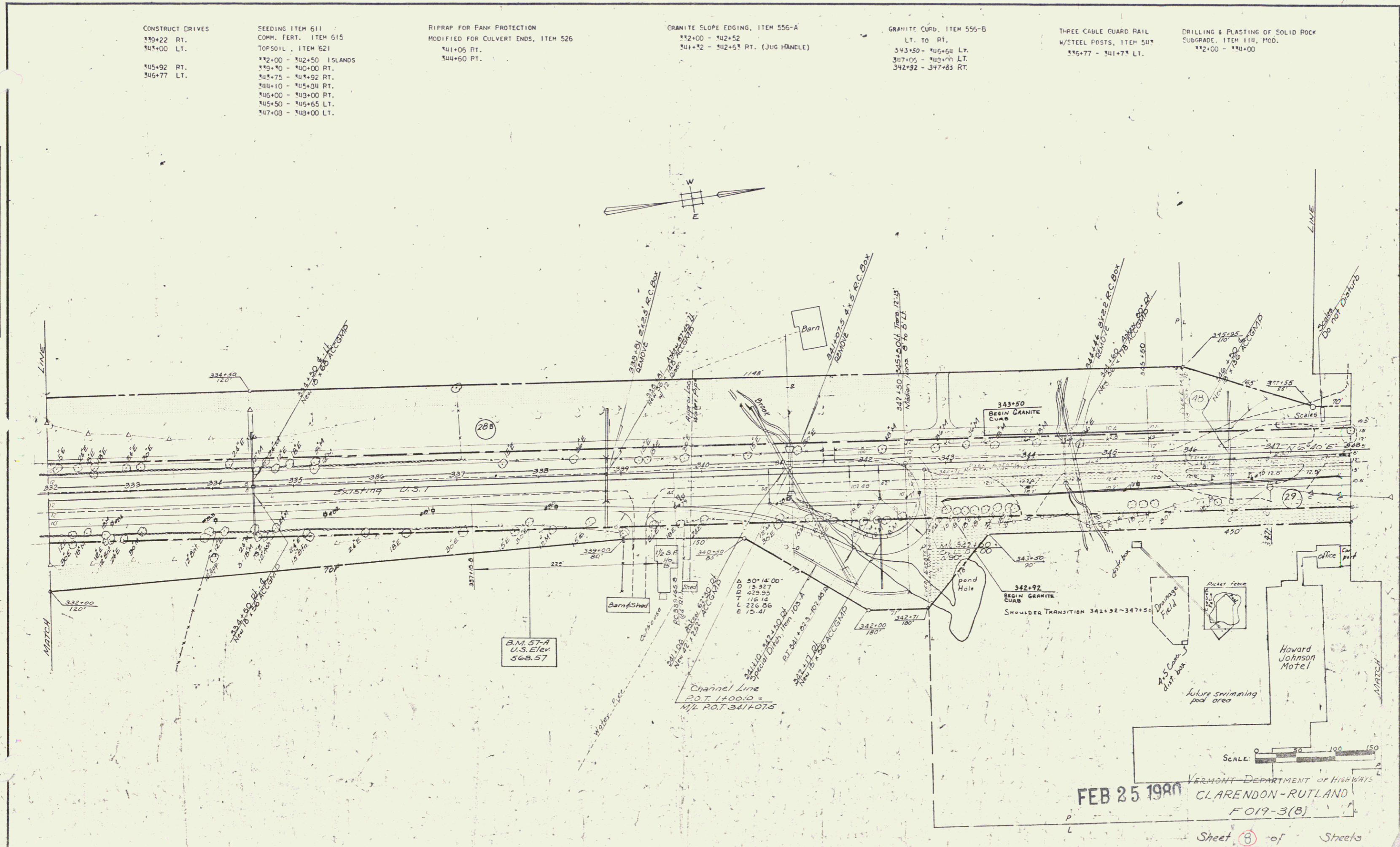
GRANITE SLOPE EDGING, ITEM 555-A
 332+00 - 342+52
 341+32 - 342+53 RT. (JUG HANDLE)

GRANITE CURB, ITEM 555-B
 LT. TO RT.
 343+50 - 346+54 LT.
 347+02 - 343+00 LT.
 342+92 - 347+83 RT.

THREE CABLE GUARD RAIL
 W/STEEL POSTS, ITEM 541*
 336+77 - 341+73 LT.

DRILLING & PLASTING OF SOLID ROCK
 SUBGRADE, ITEM 114, MOD.
 332+00 - 341+00

DATE: 2/25/80
 DRAWN BY: [illegible]
 CHECKED BY: [illegible]
 SCALE: 1" = 40'



FEB 25 1980
 VERMONT DEPARTMENT OF HIGHWAYS
 CLARENDON-RUTLAND
 FO19-3(B)
 Sheet (8) of Streets

SEEDING, ITEM 611
 COMM. FERT. ITEM 615
 TOPSOIL, ITEM 621

148+00-148+63 RT.	151+91-155+59 LT.
149+01-150+11 RT.	156+00-156+73 LT.
150+66-151+00 RT.	157+08-157+30 LT.
150+70-151+57 RT.	157+56-160+19 LT.
148+00-148+13 LT.	160+11-162+21 LT.
148+85-149+00 LT.	162+56-163+42 LT.
150+10-151+16 LT.	161+77-161+00 LT.

CONSTRUCT DRIVES

LT.	RT.
148+00.5	148+00.5
150+03	150+03.5
151+02	156+42.5
155+06.5	157+25.5
156+00.5	158+40.5
157+07.5	157+07.5
160+13.5	160+13.5
162+53.5	162+53.5
164+59.5	164+59.5
161+09.5	161+09.5

GRANITE CURB, ITEM 556-P

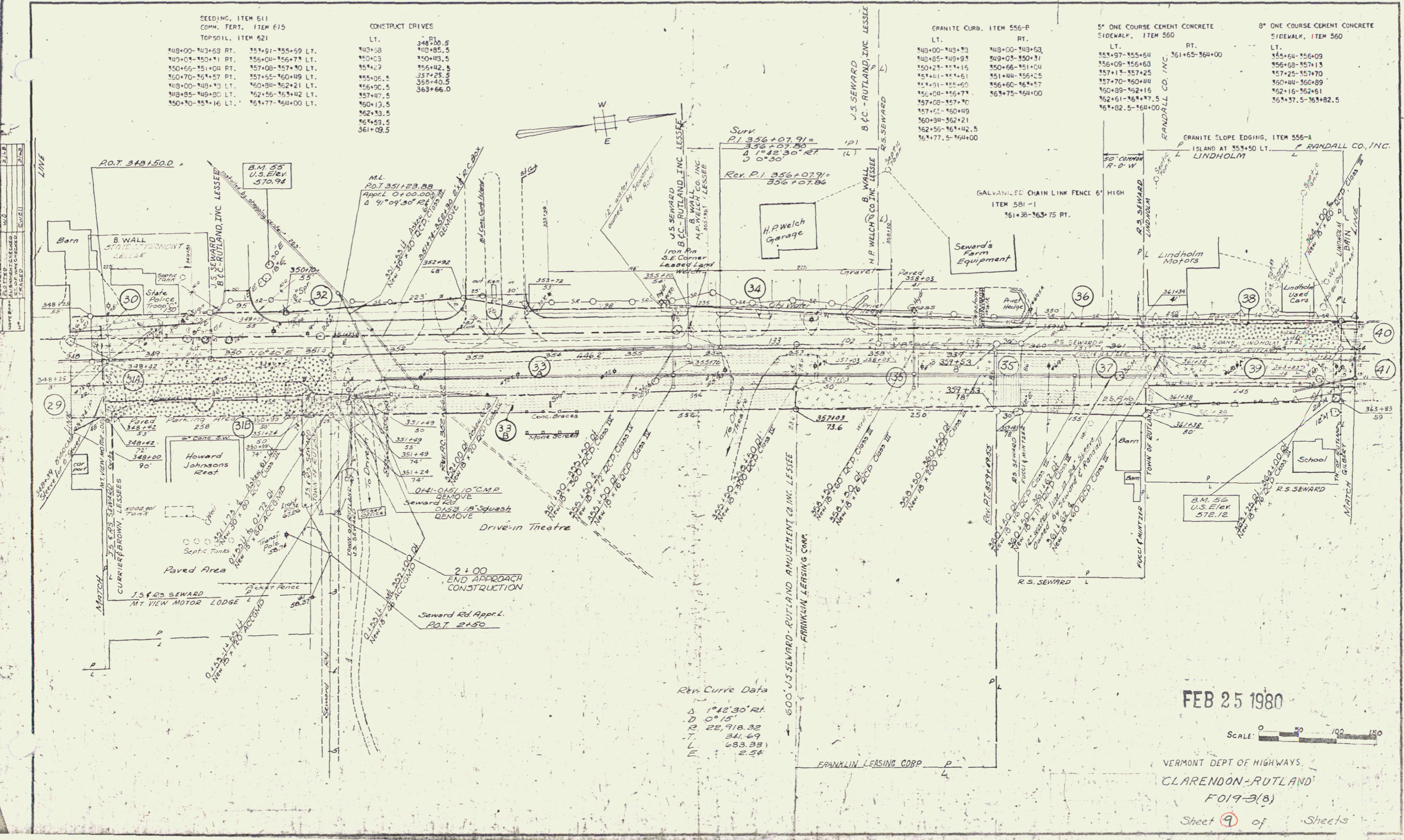
LT.	RT.
148+00-148+30	148+00-148+63
148+85-149+37	149+03-150+31
150+23-151+15	150+66-151+00
151+41-151+61	151+44-155+25
151+01-155+60	156+60-161+57
156+00-157+70	156+75-164+00
157+00-157+70	
157+01-160+19	
160+11-162+21	
162+56-163+42.5	
161+77.5-164+00	

5" ONE COURSE CEMENT CONCRETE SIDEWALK, ITEM 560

LT.	RT.
151+97-155+64	161+65-164+00

8" ONE COURSE CEMENT CONCRETE SIDEWALK, ITEM 560

LT.	RT.
151+64-156+09	
156+68-157+13	
157+25-157+70	
160+44-160+89	
162+16-162+61	
161+37.5-163+82.5	



Rev. Curve Data
 Δ 1°42'30" Rt.
 D 0°15'
 R 22,718.32
 T 341.69
 L 683.38
 E 2.54

FEB 25 1980



VERMONT DEPT. OF HIGHWAYS
 CLARENDON-RUTLAND
 F019-3(B)
 Sheet 9 of 11 Sheets

SEEDING, ITEM 511
 COMM. FERT. FOR GRASSES, ITEM 615
 TOPSOIL, ITEM 621

CONSTRUCT DRIVES

LT.	RT.
164+16.5	164+06.5
165+50.5	165+67.5
166+70.5	167+64.5
168+45.5	APPR. 0+19
APPR. 0+61.5	APPR. 1+23
APPR. 1+15	APPR. 2+22.5
APPR. 2+52	APPR. 3+15
APPR. 3+07	APPR. 3+02

LT.	RT.
0+00-0+84	0+00-0+24
0+79-1+06	0+54-1+11
1+24-2+02	1+42-2+00
3+00-3+79	2+45-3+77

GRANITE CURB, ITEM 556-P

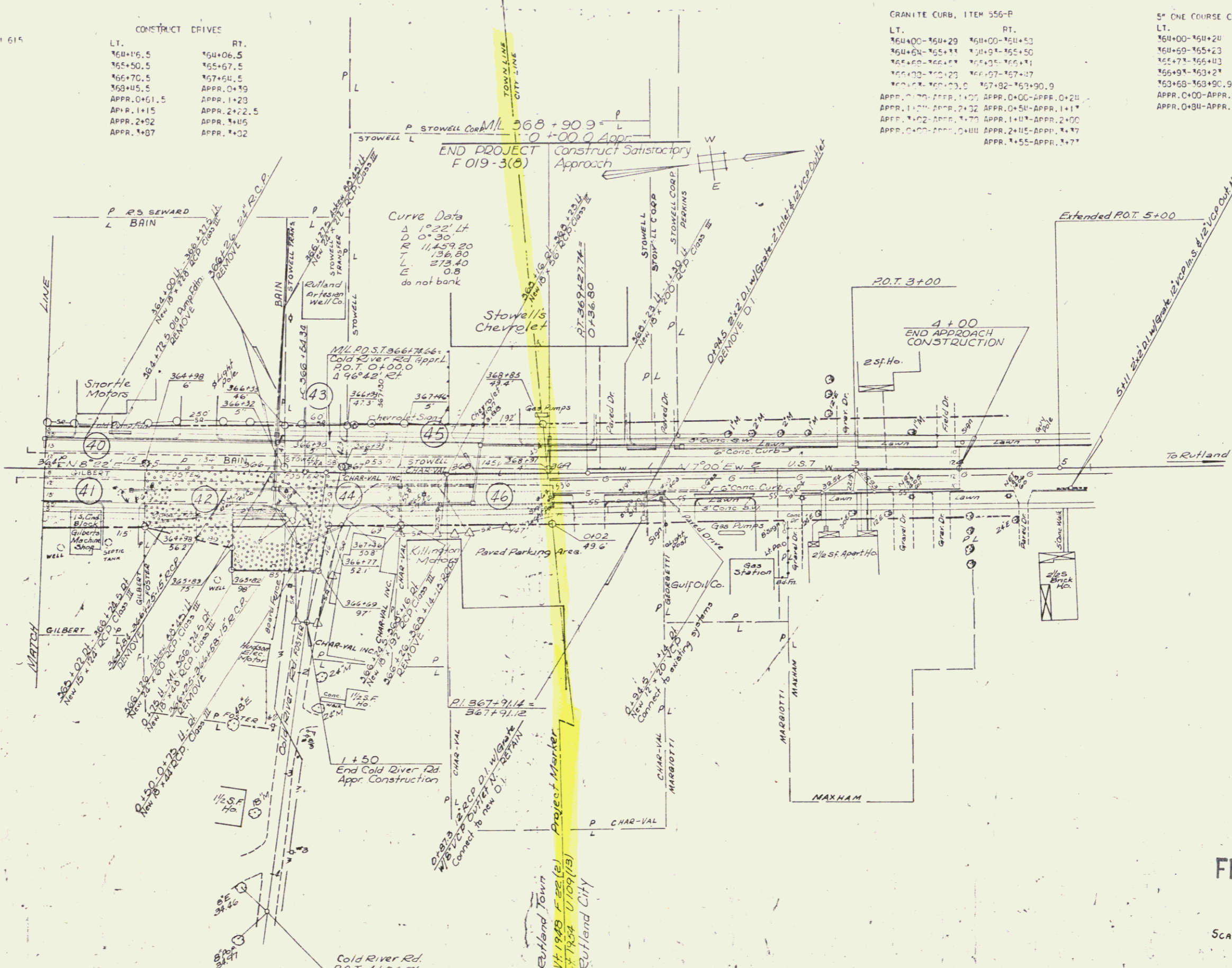
LT.	RT.
164+00-164+29	164+00-164+53
164+24-165+11	164+54-165+50
165+29-166+17	165+55-166+41
166+00-166+29	166+57-167+37
166+37-166+63.0	167+32-168+90.9
APPR. 0+00-APPR. 1+02	APPR. 0+00-APPR. 0+24
APPR. 1+02-APPR. 2+32	APPR. 0+54-APPR. 1+11
APPR. 2+32-APPR. 3+79	APPR. 1+42-APPR. 2+00
APPR. 3+79-APPR. 4+11	APPR. 2+45-APPR. 3+77
APPR. 4+11-APPR. 4+55	APPR. 3+77-APPR. 4+11

5" ONE COURSE CEMENT CONCRETE SIDEWALK, ITEM 560

LT.	RT.
164+00-164+24	164+00-164+51
164+24-165+23	164+54-165+45
165+23-166+41	165+50-166+41
166+41-167+21	166+57-167+42
167+21-168+90.9	167+32-168+90.9
APPR. 0+00-APPR. 0+19	APPR. 0+00-APPR. 0+19
APPR. 0+19-APPR. 3+79	APPR. 0+19-APPR. 3+79

3" ONE COURSE CEMENT CONCRETE SIDEWALK, ITEM 560

LT.	RT.
164+24-164+69	164+54-165+92
165+23-165+71	165+45-166+90
166+41-166+90	167+42-167+37
167+21-168+68	APPR. 0+19-APPR. 0+19
APPR. 0+19-APPR. 0+34	



FEB 25 1980



CLARENDON-RUTLAND
 F 019-3(b)
 Sheet 10 of Sheets