

CONSTRUCT DRIVES  
 119+22 RT.  
 119+00 LT.  
 115+92 RT.  
 116+77 LT.

SEEDING ITEM 611  
 COMM. FERT. ITEM 615  
 TOPSOIL, ITEM 621  
 112+00 - 112+50 ISLANDS  
 119+70 - 119+00 RT.  
 119+75 - 119+92 RT.  
 114+10 - 115+04 RT.  
 116+00 - 113+00 RT.  
 115+50 - 116+65 LT.  
 117+08 - 113+00 LT.

RIPRAP FOR BANK PROTECTION  
 MODIFIED FOR CULVERT ENDS, ITEM 526  
 111+06 RT.  
 114+60 RT.

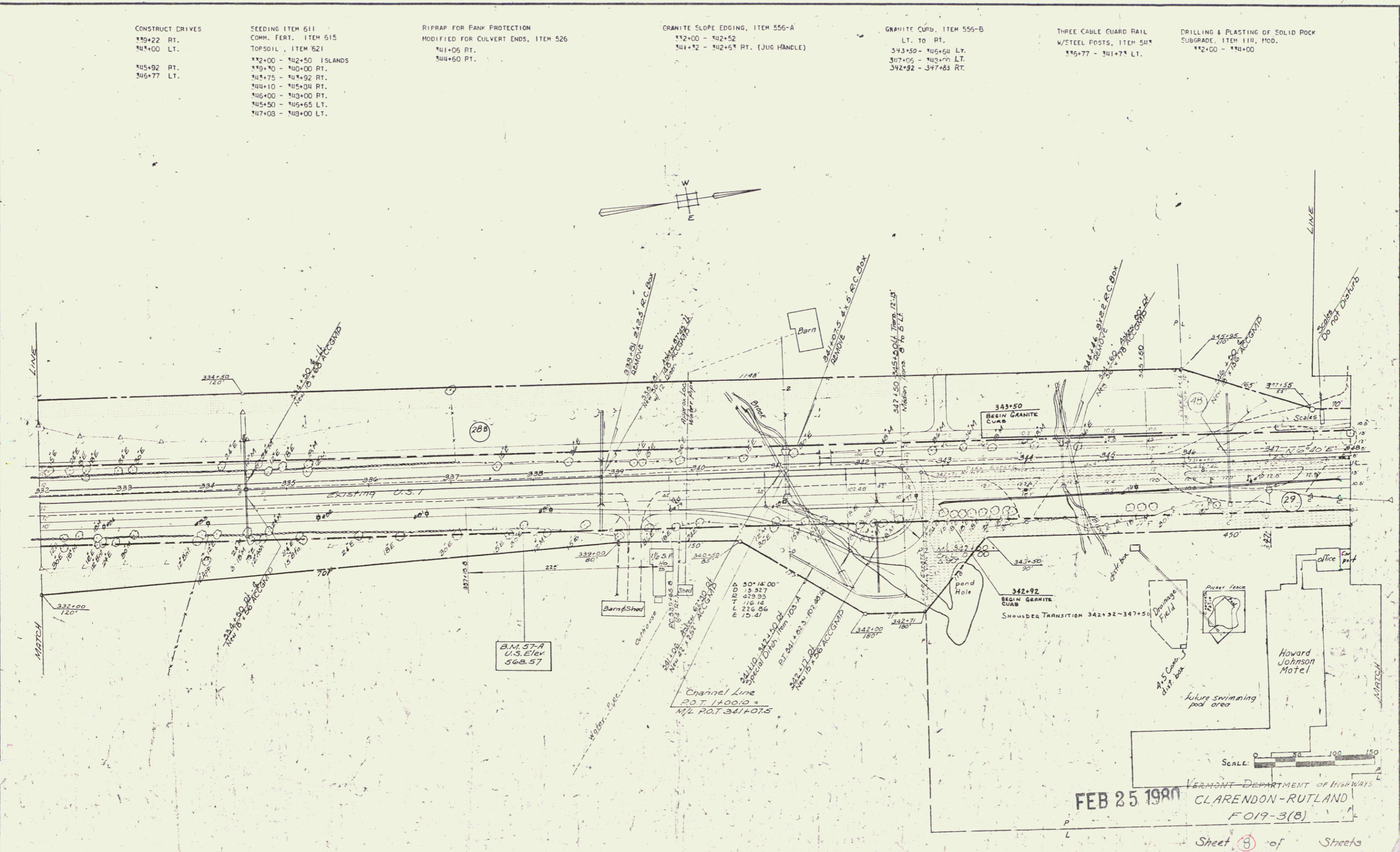
GRANITE SLOPE EDGING, ITEM 555-A  
 112+00 - 112+52  
 111+12 - 112+51 RT. (JUG HANDLE)

GRANITE CURB, ITEM 555-B  
 LT. TO RT.  
 113+50 - 116+64 LT.  
 117+02 - 113+00 LT.  
 112+92 - 117+83 RT.

THREE CABLE GUARD RAIL  
 W/STEEL POSTS, ITEM 511  
 116+77 - 111+71 LT.

DRILLING & PLASTING OF SOLID ROCK  
 SUBGRADE, ITEM 111, MOD.  
 112+00 - 111+00

DATE: 2/25/80  
 DRAWN BY: [illegible]  
 CHECKED BY: [illegible]  
 PROJECT NO.: 119-3(B)



FEB 25 1980  
 VERMONT DEPARTMENT OF HIGHWAYS  
 CLARENDON-RUTLAND  
 F019-3(B)  
 Sheet (8) of Streets