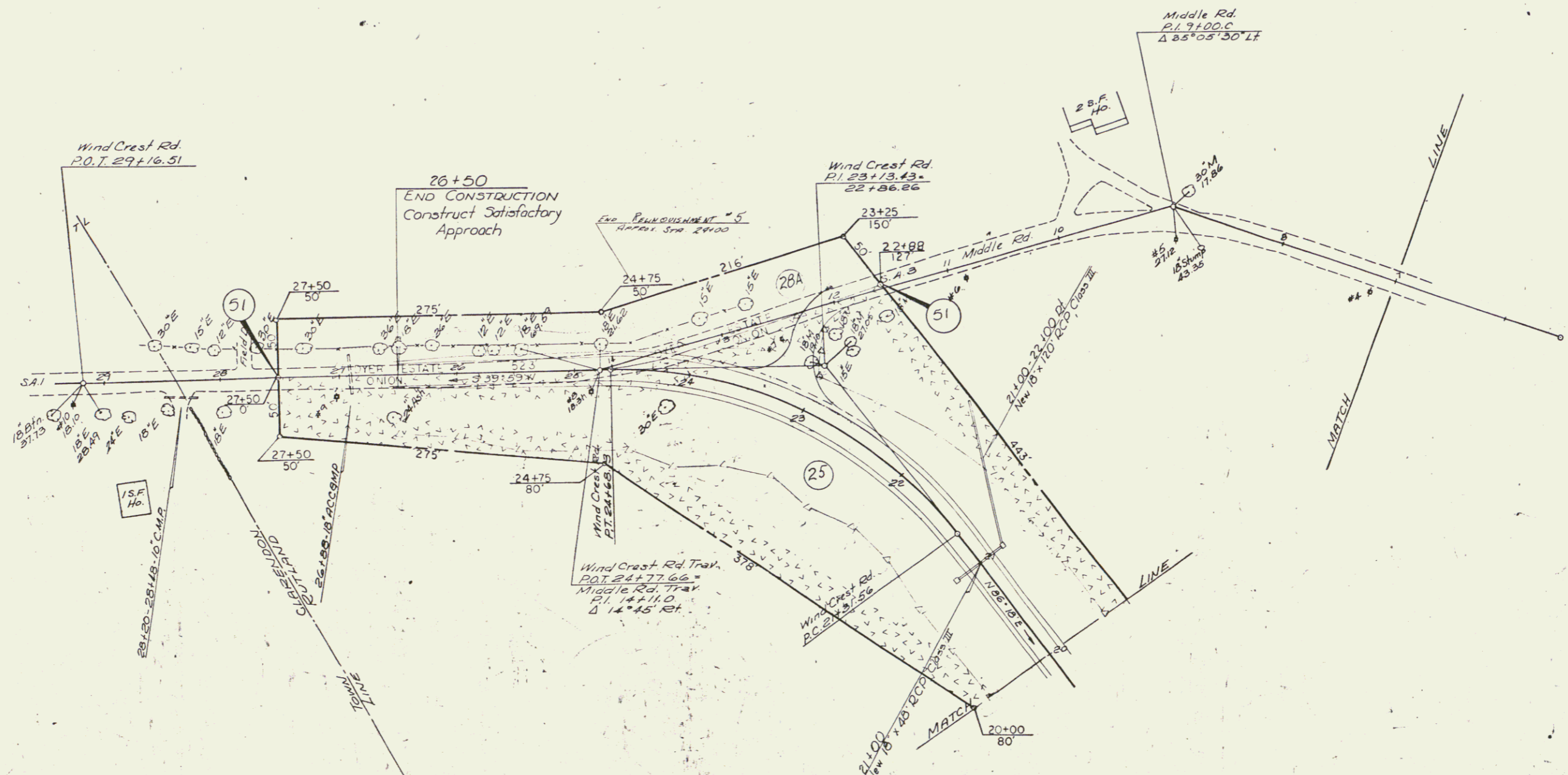


EXCAVATION & REMOVAL OF ROAD SURFACE
ON ROADWAY, ITEM 118-A
23+25 - 24+15 ± RT.

CONSTRUCT APPROACH
23+25

| | | |
|-----------|------|----|
| PLAN | DATE | BY |
| REVISED | | |
| APPROVED | | |
| DESIGNED | | |
| CHECKED | | |
| IN CHARGE | | |



Curve Data
Wind Crest Rd.
A 53° 51' Lt.
D 165.00
R 351.85
L 131.87
E 43.30
bank 7/8 per ft.

SCALE: 0 50 100 150

MIDDLE & WIND CREST ROADS
VERMONT DEPARTMENT OF HIGHWAYS
CLARENDON-RUTLAND
FO19-3(B)
FEB 25 1980 Sheet 6A of 8 sheets