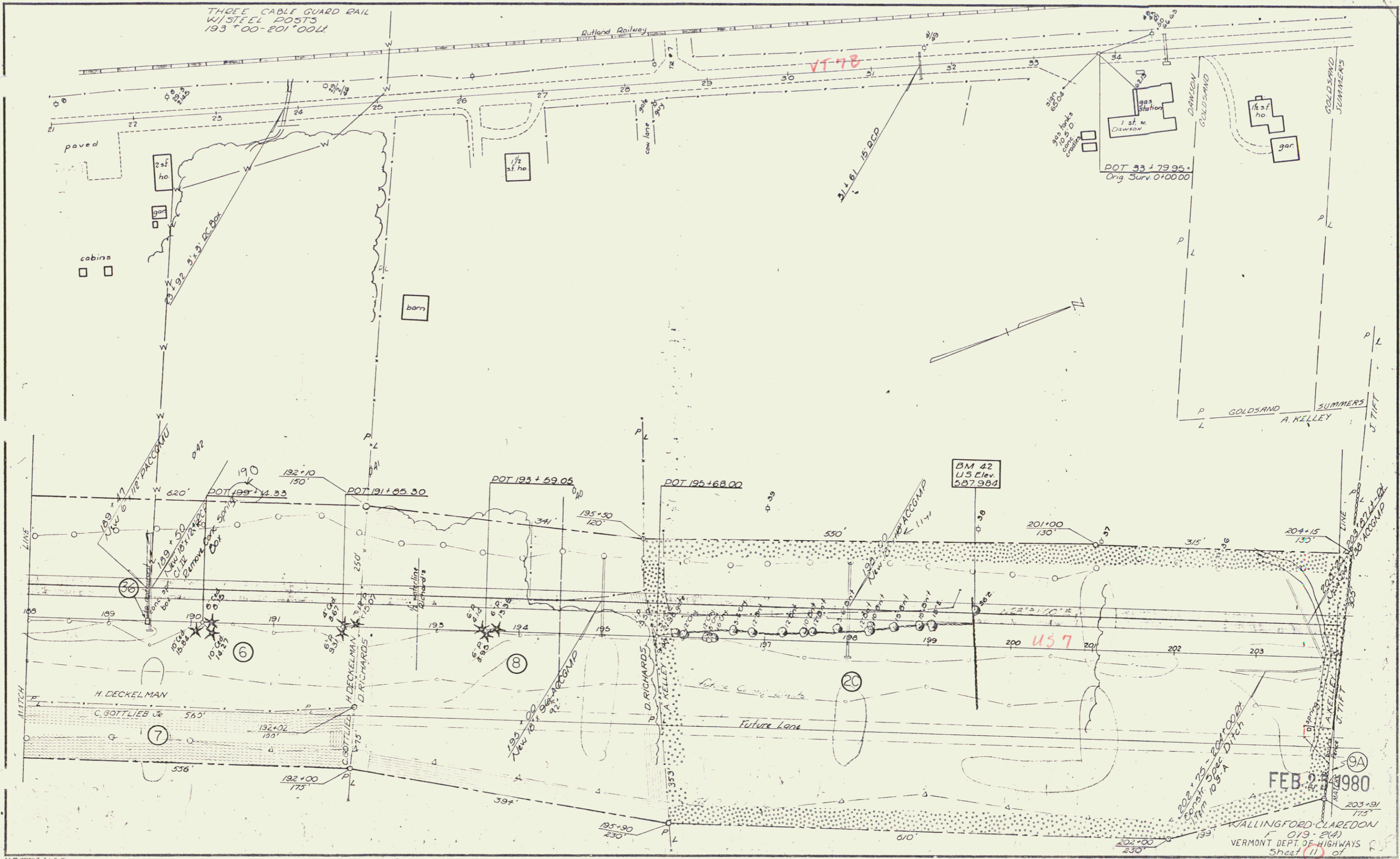


DATE	BY	REVISION
1/15/80	WJ	1.0
1/15/80	WJ	1.1
1/15/80	WJ	1.2
1/15/80	WJ	1.3
1/15/80	WJ	1.4
1/15/80	WJ	1.5
1/15/80	WJ	1.6
1/15/80	WJ	1.7
1/15/80	WJ	1.8
1/15/80	WJ	1.9
1/15/80	WJ	2.0



FEB 2 1980

KALLINGFORD-CLAREDON  
019-24  
VERMONT DEPT. OF HIGHWAYS  
Sheet 11 of