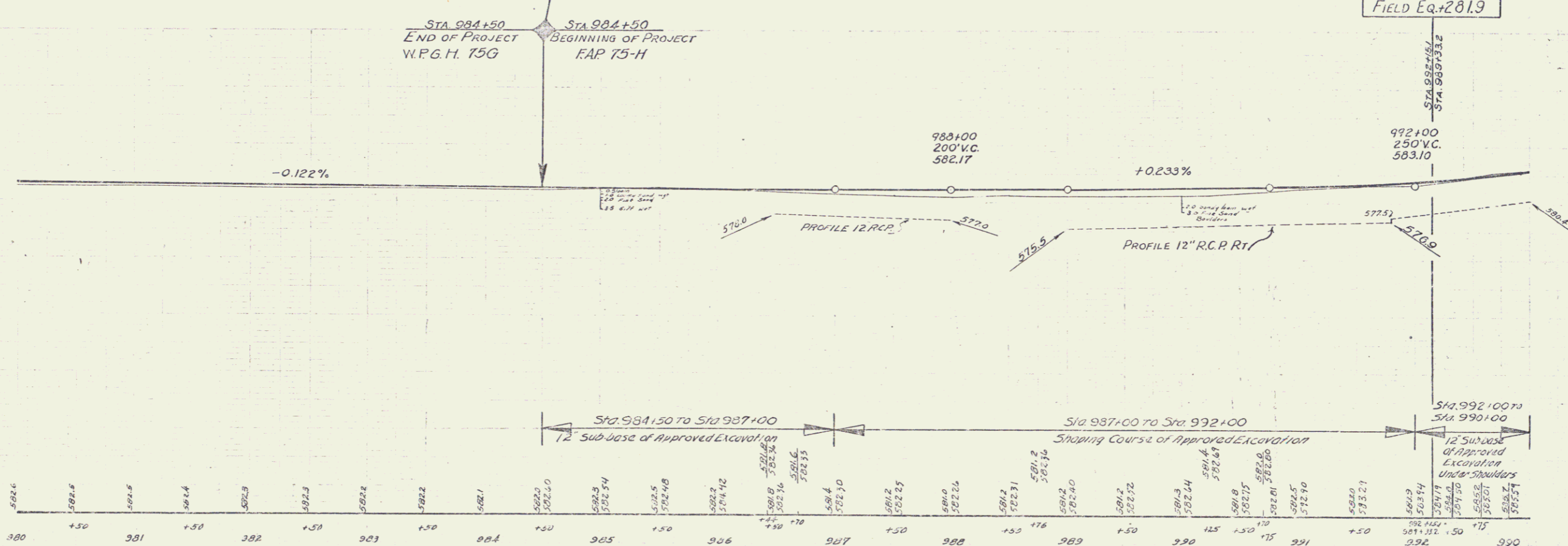
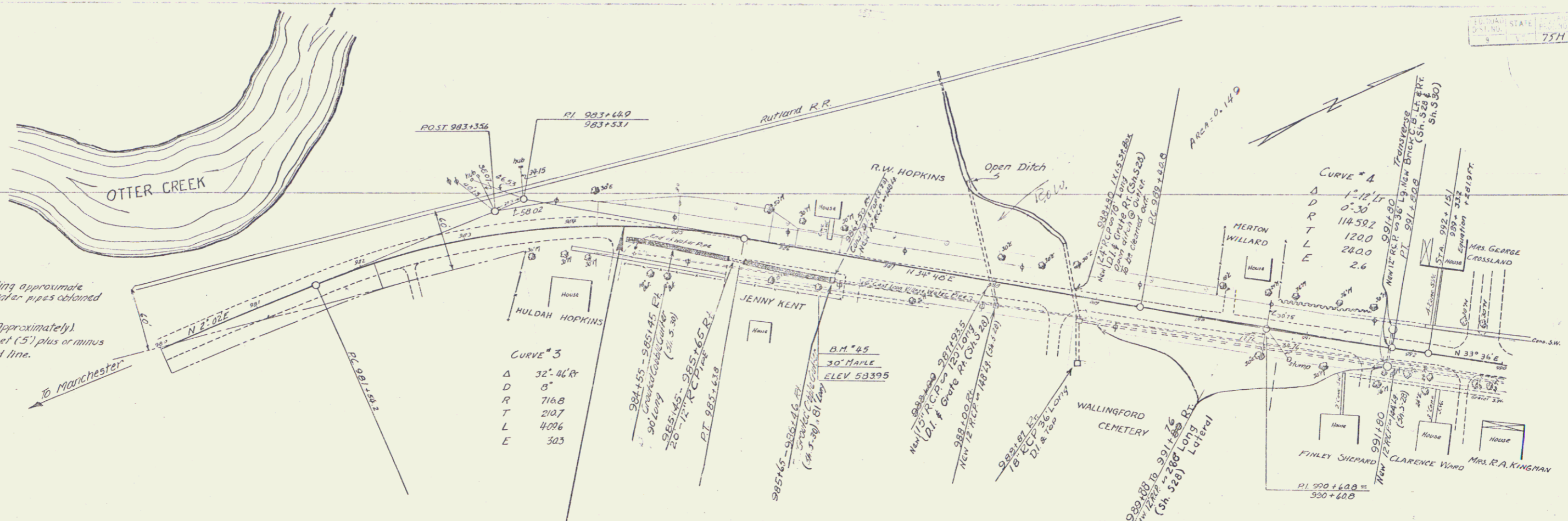


NOTE:
 Information regarding approximate location of village water pipes obtained April 15, 1937. Installed in 1908 (Approximately). Depth of Pipe five feet (5') plus or minus below original ground line.



B.M. # 45 SPIKE IN ROOT OF 30" MAPLE 71 FT. RT. OF STA. 983+65 ELEV. 583.95