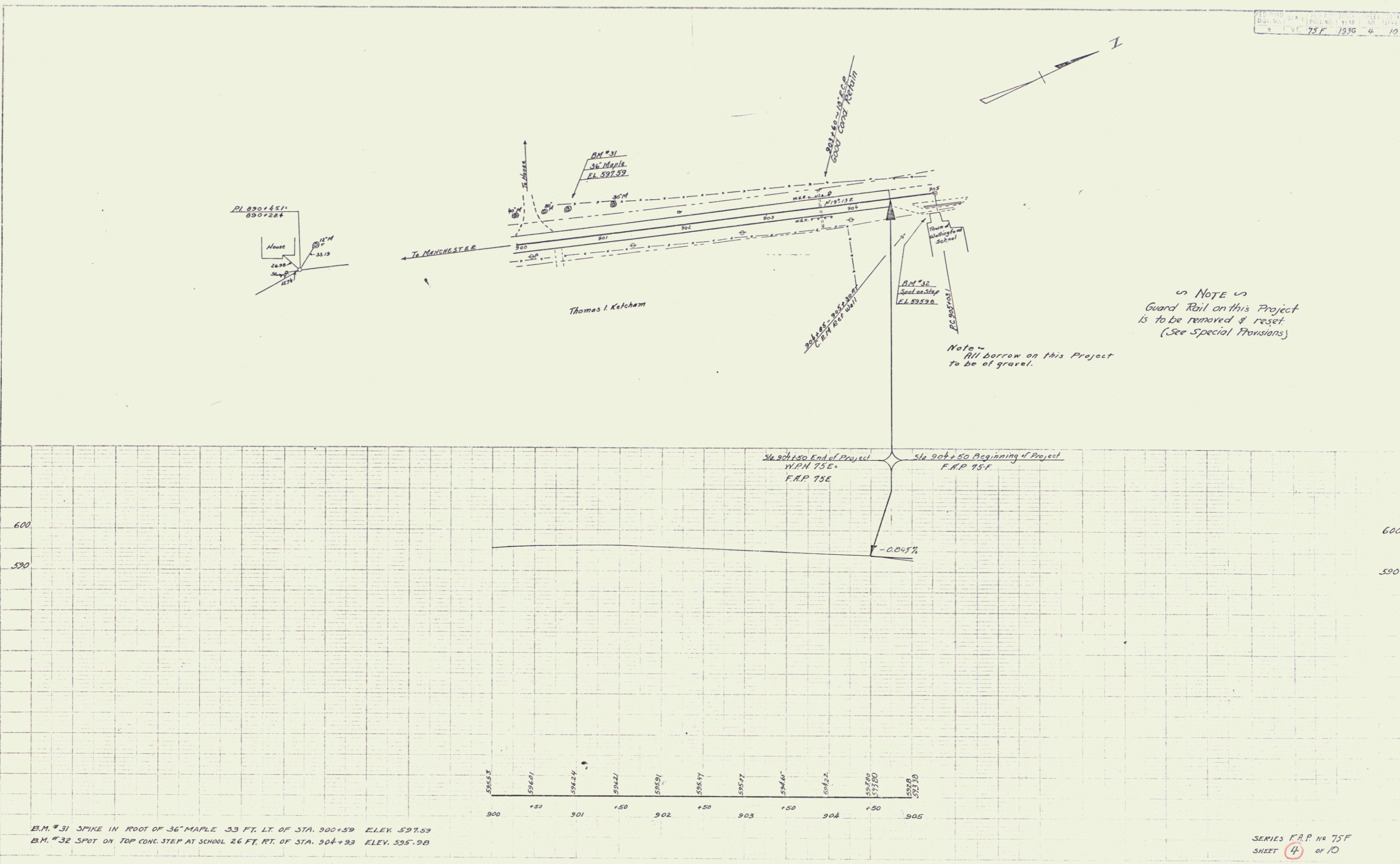


FILE NO. 1117
 DATE: 75 F 1936 4 10
 SHEET NO. 4 OF 10



B.M. #31 SPIKE IN ROOT OF 36" MAPLE 33 FT. LT. OF STA. 900+59 ELEV. 597.59
 B.M. #32 SPOT ON TOP CONC. STEP AT SCHOOL 26 FT. RT. OF STA. 904+93 ELEV. 595.98