

**INDEX OF SHEETS**

SHEET NO. 1	TITLE PAGE
" 2	TYPICAL CROSS-SECTION OF IMPROVEMENT ONE COURSE CEMENT CONCRETE PAVEMENT (ITEM 23)
" 3	BANKING AND WIDENING TABLES
" 4-5	PLAN AND PROFILE SHEETS
" 6	STANDARD SHEET S-28 PIPE CULVERTS
" 7	STANDARD SHEET S-30 GUARD RAIL
" 8	STANDARD SHEET S-40 BARRICADES, SIGNS & LIGHTS
" 9-13	CROSS SECTIONS

FED. ROAD DIST. NO.	STATE	PROJ. NO.	SHEET NO.	TOTAL SHEETS
9	VT.	75B	1	13

**STATE OF VERMONT  
STATE HIGHWAY DEPARTMENT**

**PLAN AND PROFILE OF PROPOSED  
STATE HIGHWAY**  
FEDERAL AID PROJECT

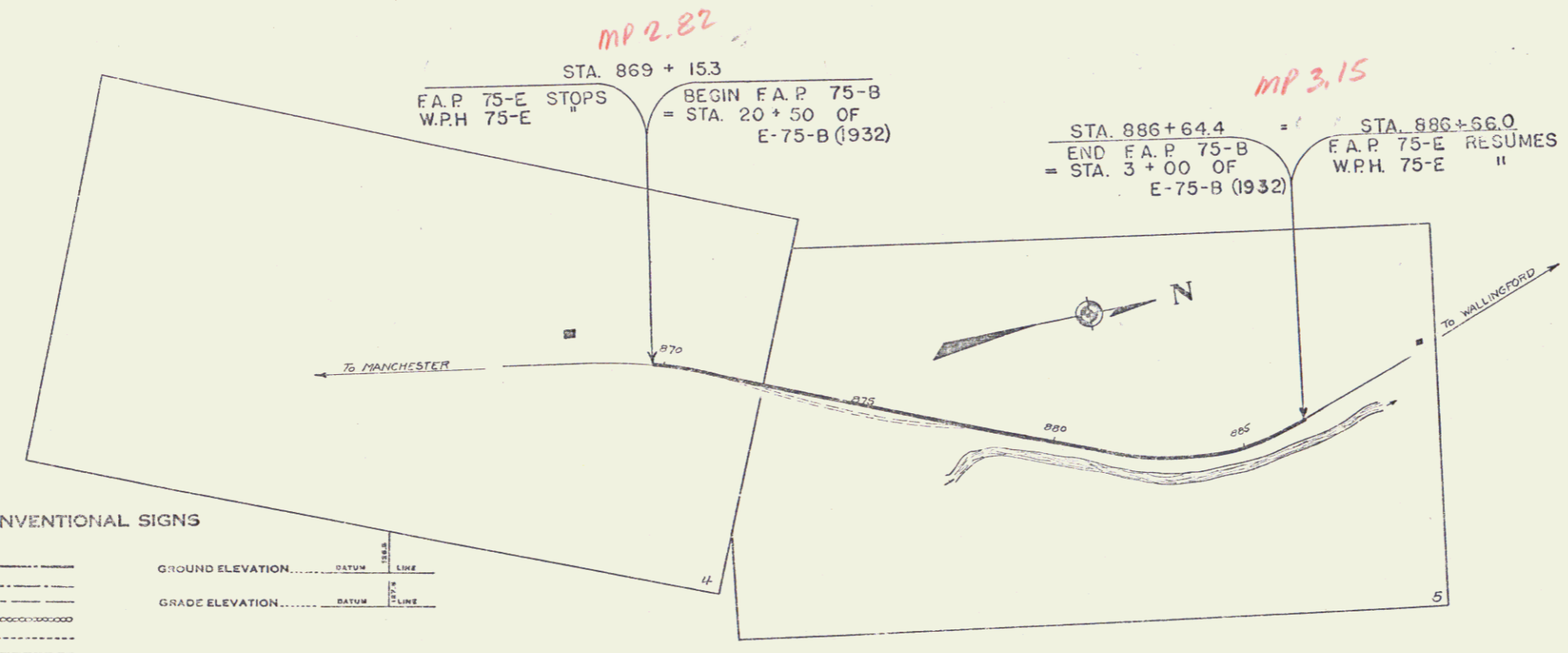
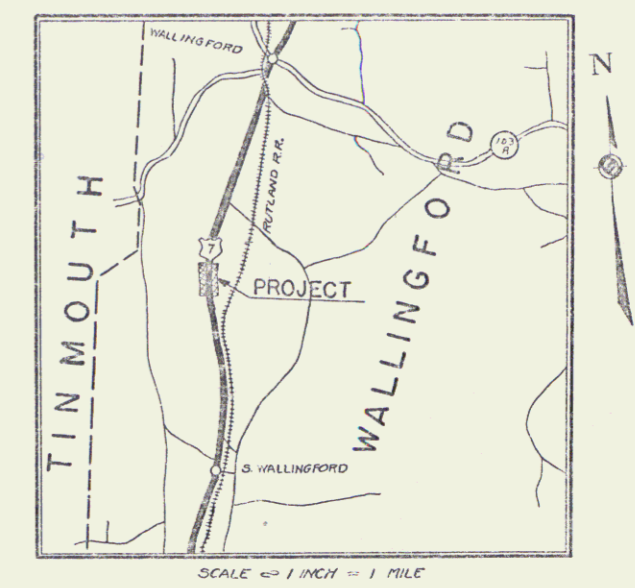
**TOWN OF WALLINGFORD**  
MANCHESTER-RUTLAND ROAD

Pin# 992489  
Rte U.S. 7

FROM A POINT 4435 FT. SOUTH OF THE INTERSECTION OF THE TOWN ROAD TO EAST WALLINGFORD NORTHERLY 0.331 MILES TO A POINT 2684 FT. SOUTH OF THE SAME INTERSECTION.

LENGTH OF PROJECT: 1749.1 FEET = 0.331 MILES

STANDARD SHEET S-28 APPROVED BY THE CHIEF ENGINEER ON JULY 14, 1936.  
STANDARD SHEET S-30 APPROVED BY THE CHIEF ENGINEER ON AUGUST 15, 1936.



**CONVENTIONAL SIGNS**

COUNTY LINE	GROUND ELEVATION
TOWN LINE	FENCE LINE
STONE WALL	UNFENCED PROPERTY
GUARD RAIL	TRAVELED WAY
RAILROAD	RETAINING WALL
CENTER LINE	SURVEY LINE
CULVERT	DROP INLET
TROLLEY POLE	POWER POLE
TELEPHONE POLE	TREES
HEDGE	

**CURVE DATA**

DEFLECTION ANGLE	Δ
DEGREE OF CURVE	D
RADIUS OF CURVE	R
TANGENT DISTANCE	T
LENGTH OF CURVE	L
EXTERNAL DISTANCE	E
POINT OF INTERSECTION	P. I.
POINT OF CURVE	P. C.
POINT OF TANGENT	P. T.
POINT ON TANGENT	P. O. T.

**SCALES**

TITLE	1" = 200'
PLAN	1" = 50'
PROFILE	1" = 10'
CROSS-SECTIONS	1" = 5'

These plans are subject to such revision as may be required by the Bureau of Public Roads and the Commissioner of Highways. Construction is to be carried on in accordance with the plans and standard road and bridge specifications of 1930 including all subsequent approved revisions, and such revised specifications and special provisions as are submitted with the plans.

APPROVED: June 15, 1936  
*[Signature]*  
COMMISSIONER OF HIGHWAYS  
SUBMITTED BY ORDER OF THE STATE HIGHWAY BOARD

RECOMMENDED FOR APPROVAL: [Signature]  
DISTRICT ENGINEER BUREAU OF PUBLIC ROADS  
RECOMMENDED FOR APPROVAL: [Signature]  
CHIEF ENGINEER BUREAU OF PUBLIC ROADS  
APPROVED: [Signature]  
DISTRICT ENGINEER BUREAU OF PUBLIC ROADS

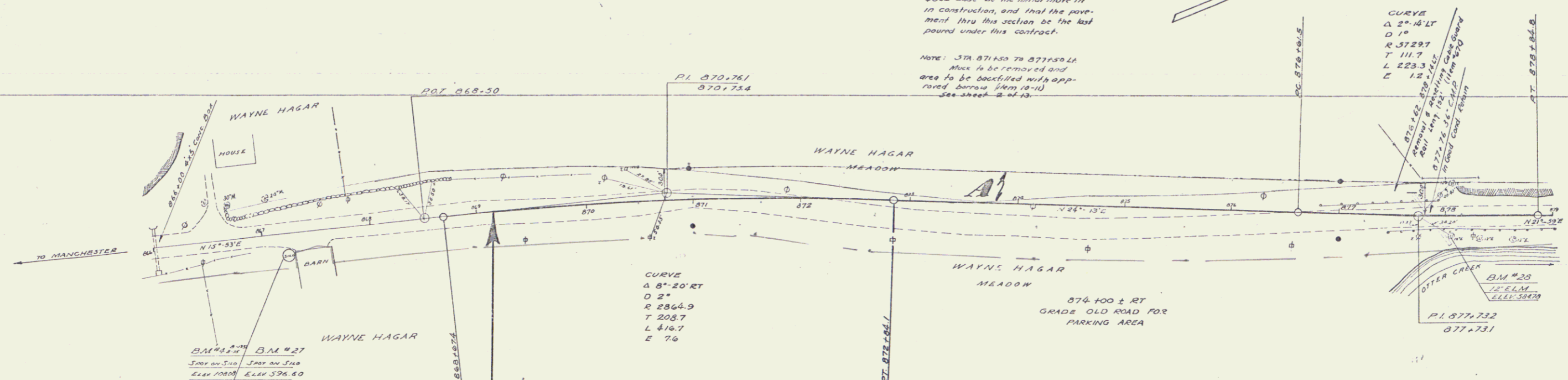
Project No. F75B

CORRECT: June 15, 1936  
*[Signature]*  
CHIEF ENGINEER

SERIES F NO. 75B FILED  
SHEET 1 OF 13

NOTE: STA 871+50 TO STA 877+50  
 In order to obtain maximum compaction under traffic it is required that the placing of this fill & sub-base be the initial move in construction, and that the pavement thru this section be the last pound under this contract.

NOTE: STA 871+50 TO 877+50  
 Area to be removed and area to be backfilled with approved borrow from road see sheet 2 of 13.



PARCEL	INSTRUMENT	DATE	GRANTOR	GRANTEE	RECORDED	REMARKS
A	W.D.	9-1-36	WAYNE & E. HAGAR	PROFIT	BOOK PAGE DATE 25 308 10-3-36	

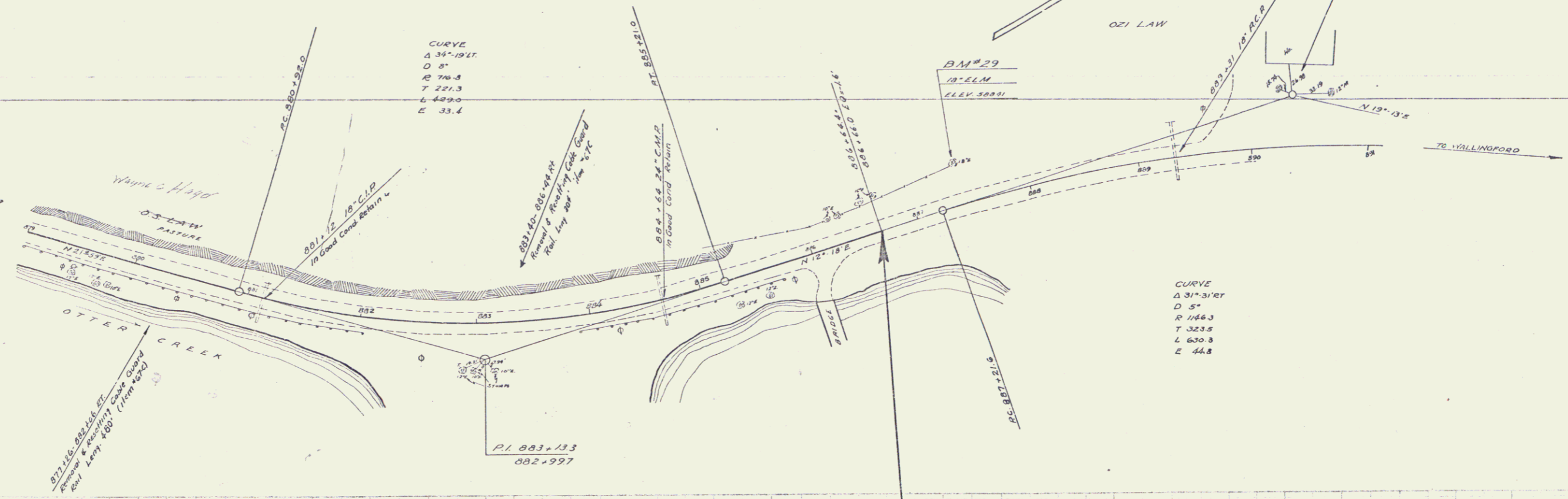


STATION	ELEVATION	STATION	ELEVATION	STATION	ELEVATION	STATION	ELEVATION	STATION	ELEVATION
866+00	599.6	867+00	597.2	868+00	595.7	869+00	594.7	870+00	594.1
866+10	599.7	867+10	597.3	868+10	595.8	869+10	594.8	870+10	594.2
866+20	599.8	867+20	597.4	868+20	595.9	869+20	594.9	870+20	594.3
866+30	599.9	867+30	597.5	868+30	596.0	869+30	595.0	870+30	594.4
866+40	600.0	867+40	597.6	868+40	596.1	869+40	595.1	870+40	594.5
866+50	600.1	867+50	597.7	868+50	596.2	869+50	595.2	870+50	594.6
866+60	600.2	867+60	597.8	868+60	596.3	869+60	595.3	870+60	594.7
866+70	600.3	867+70	597.9	868+70	596.4	869+70	595.4	870+70	594.8
866+80	600.4	867+80	598.0	868+80	596.5	869+80	595.5	870+80	594.9
866+90	600.5	867+90	598.1	868+90	596.6	869+90	595.6	870+90	595.0
867+00	600.6	867+00	598.2	868+00	596.7	869+00	595.7	870+00	595.1
867+10	600.7	867+10	598.3	868+10	596.8	869+10	595.8	870+10	595.2
867+20	600.8	867+20	598.4	868+20	596.9	869+20	595.9	870+20	595.3
867+30	600.9	867+30	598.5	868+30	597.0	869+30	596.0	870+30	595.4
867+40	601.0	867+40	598.6	868+40	597.1	869+40	596.1	870+40	595.5
867+50	601.1	867+50	598.7	868+50	597.2	869+50	596.2	870+50	595.6
867+60	601.2	867+60	598.8	868+60	597.3	869+60	596.3	870+60	595.7
867+70	601.3	867+70	598.9	868+70	597.4	869+70	596.4	870+70	595.8
867+80	601.4	867+80	599.0	868+80	597.5	869+80	596.5	870+80	595.9
867+90	601.5	867+90	599.1	868+90	597.6	869+90	596.6	870+90	596.0
868+00	601.6	868+00	599.2	868+00	597.7	869+00	596.7	870+00	596.1
868+10	601.7	868+10	599.3	868+10	597.8	869+10	596.8	870+10	596.2
868+20	601.8	868+20	599.4	868+20	597.9	869+20	596.9	870+20	596.3
868+30	601.9	868+30	599.5	868+30	598.0	869+30	597.0	870+30	596.4
868+40	602.0	868+40	599.6	868+40	598.1	869+40	597.1	870+40	596.5
868+50	602.1	868+50	599.7	868+50	598.2	869+50	597.2	870+50	596.6
868+60	602.2	868+60	599.8	868+60	598.3	869+60	597.3	870+60	596.7
868+70	602.3	868+70	599.9	868+70	598.4	869+70	597.4	870+70	596.8
868+80	602.4	868+80	600.0	868+80	598.5	869+80	597.5	870+80	596.9
868+90	602.5	868+90	600.1	868+90	598.6	869+90	597.6	870+90	597.0
869+00	602.6	869+00	600.2	869+00	598.7	869+00	597.7	870+00	597.1

866 B.M. # 27 BENCH SPOT ON CONCRETE SLAB FOUNDATION 20' RT STA 867+23 ELEV 596.60  
 866 B.M. # 20 SPINE IN FOOT OF 12" ELM 1/8 RT STA 872+03 ELEV 504.78

NOTE: Any loose rock that is necessary to be removed on the left side of the rock section 374 875+00 to 885+00 is to be paid for as Common Excavation but Barrow (Item 10-1) or Solid Rock Excavation (Item 10) in accordance with the specifications is to be used in the embankment 374 871+50 - 877+50.

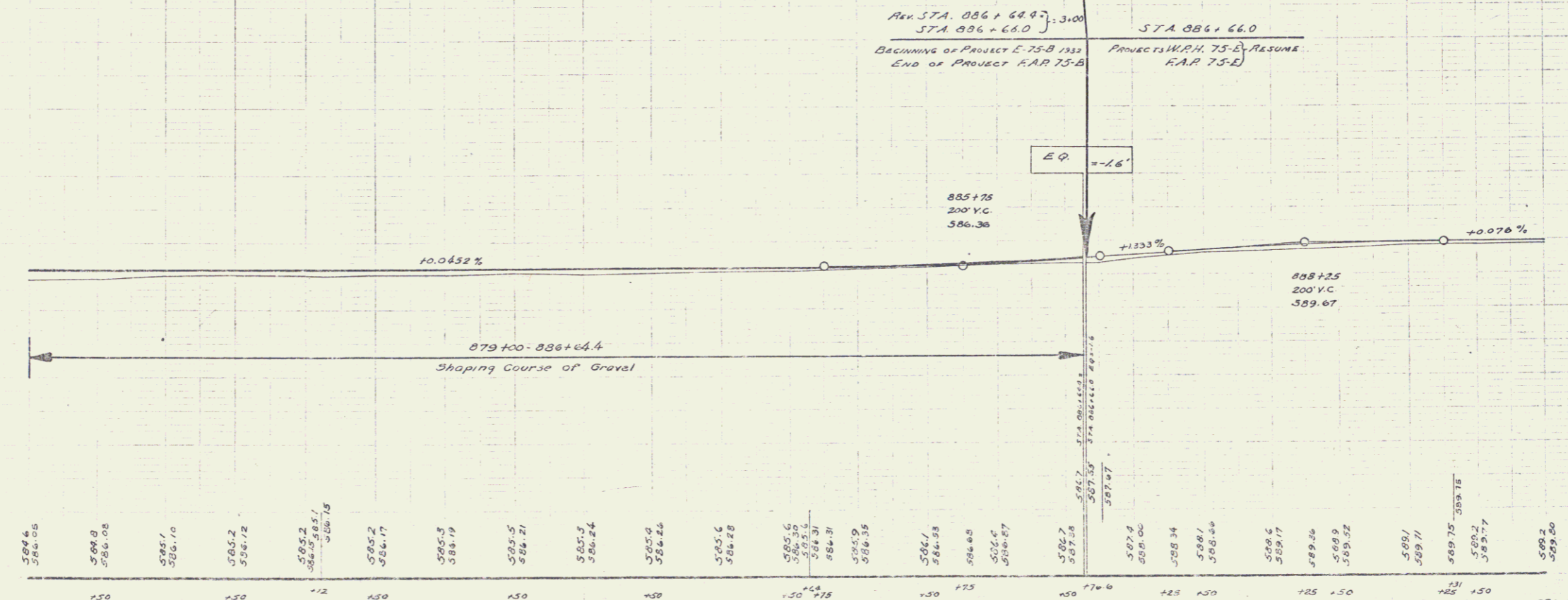
STATE OF NEW YORK  
 DISTRICT OF ALBANY  
 150 1937 3 13



CURVE  
 Δ 34°-19'41"  
 D 57'  
 R 766.8  
 T 221.3  
 L 429.0  
 E 33.4

CURVE  
 Δ 31°-31'47"  
 D 57'  
 R 1466.3  
 T 323.5  
 L 630.8  
 E 44.8

600  
 590  
 580  
 570



879	880	881	882	883	884	885	886	887	888	889	890
580.6	580.8	580.9	581.0	581.1	581.2	581.3	581.4	581.5	581.6	581.7	581.8
581.9	582.0	582.1	582.2	582.3	582.4	582.5	582.6	582.7	582.8	582.9	583.0
583.1	583.2	583.3	583.4	583.5	583.6	583.7	583.8	583.9	584.0	584.1	584.2
584.3	584.4	584.5	584.6	584.7	584.8	584.9	585.0	585.1	585.2	585.3	585.4
585.5	585.6	585.7	585.8	585.9	586.0	586.1	586.2	586.3	586.4	586.5	586.6
586.7	586.8	586.9	587.0	587.1	587.2	587.3	587.4	587.5	587.6	587.7	587.8
587.9	588.0	588.1	588.2	588.3	588.4	588.5	588.6	588.7	588.8	588.9	589.0
589.1	589.2	589.3	589.4	589.5	589.6	589.7	589.8	589.9	590.0	590.1	590.2
590.3	590.4	590.5	590.6	590.7	590.8	590.9	591.0	591.1	591.2	591.3	591.4
591.5	591.6	591.7	591.8	591.9	592.0	592.1	592.2	592.3	592.4	592.5	592.6
592.7	592.8	592.9	593.0	593.1	593.2	593.3	593.4	593.5	593.6	593.7	593.8
593.9	594.0	594.1	594.2	594.3	594.4	594.5	594.6	594.7	594.8	594.9	595.0

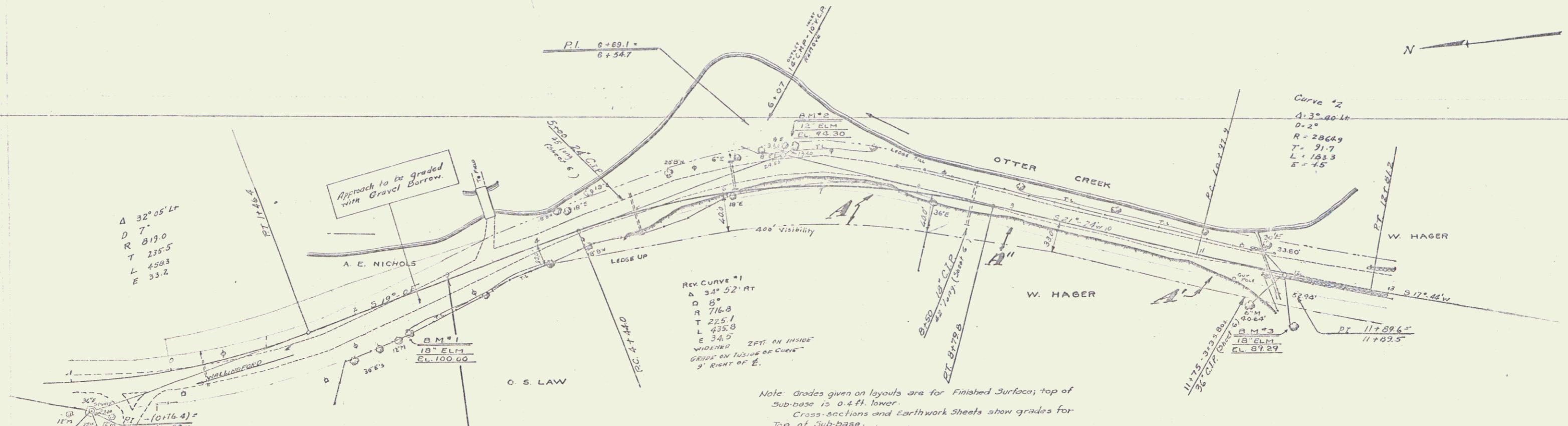
SERIES R.A.P. NO. 75-B  
 SHEET 3 OF 13

Sta	Side	Depth	Comp	Excav
1+00	Left	25	4.3	2.8
1+50	Left	42	7.5	3.7
1+75	Left	60	4.3	4.1

Sta	Loc. Pt	Length	Cost	Cost
Approach	LC	160	40	2.00
1+75-1+100	LC	4.80	40	4.80

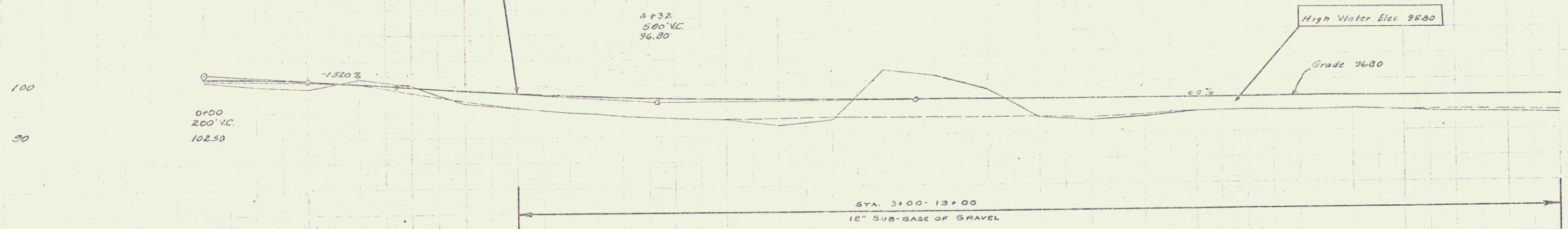
Curve Sta	LT or RT	W
1+500	RT	1
0+500	RT	1
1+175	RT	1

6-75-B 1432 4 12



Note: Grades given on layouts are for Finished Surfaces; top of Sub-base is 0.4 ft. lower. Cross-sections and Earthwork Sheets show grades for top of Sub-base.

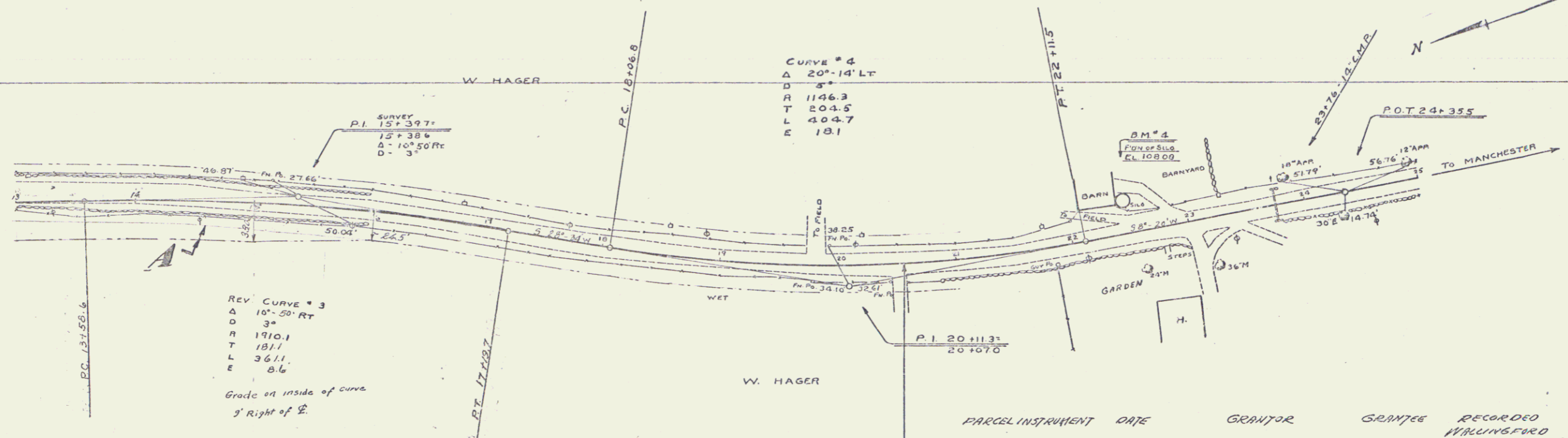
PARCEL	INSTRUMENT	DATE	GRANTOR	GRANTEE	RECORDED	REMARKS	
STA. 3+00							
BEGINNING OF PROJECT	W.D.	12-30-32	O.S. LAW	STORV. 25	34	12-30-32	
A'	W.D.	12-30-32	WANNING & E. HAGER	"	25	35	12-30-32
A''	Q.C.D.	12-29-32	M. F. NEWTON	"	25	37	12-30-32



Sta	Elev	Sta	Elev	Sta	Elev	Sta	Elev	Sta	Elev	Sta	Elev	Sta	Elev	Sta	Elev	Sta	Elev	Sta	Elev												
0	102.50	1	101.5	2	100.0	3	98.5	4	97.0	5	95.5	6	94.0	7	92.5	8	91.0	9	89.5	10	88.0	11	86.5	12	85.0	13	83.5	14	82.0	15	80.5

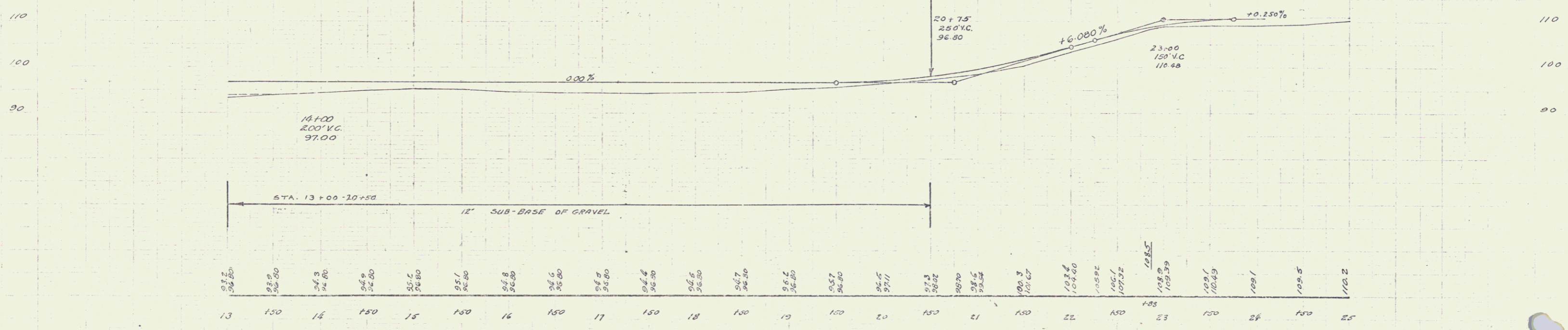
B.M. No. 1. Spike in root of 18' Elm 25 ft right of Sta. 2+32. Elev. 100.00  
 B.M. No. 2. Spike in 18' Elm 27 ft left of Sta. 6+76. Elev. 98.30  
 B.M. No. 3. Spike in root of 18' Elm 53 ft right of Sta. 10+08. Elev. 89.29

SHEET 4 OF 12



PARCEL	INSTRUMENT	DATE	GRANTOR	GRANTEE	RECORDED	REMARKS
A	N.D.	12-30-32	W. HAGER	J. O. V.	25	35 12-30-32

STA. 20+00  
END OF PROJECT



B.M. No. 4. Drill hole in conc. foundation of silo, 27' left of Sta. 22+49. Elev. 108.03

