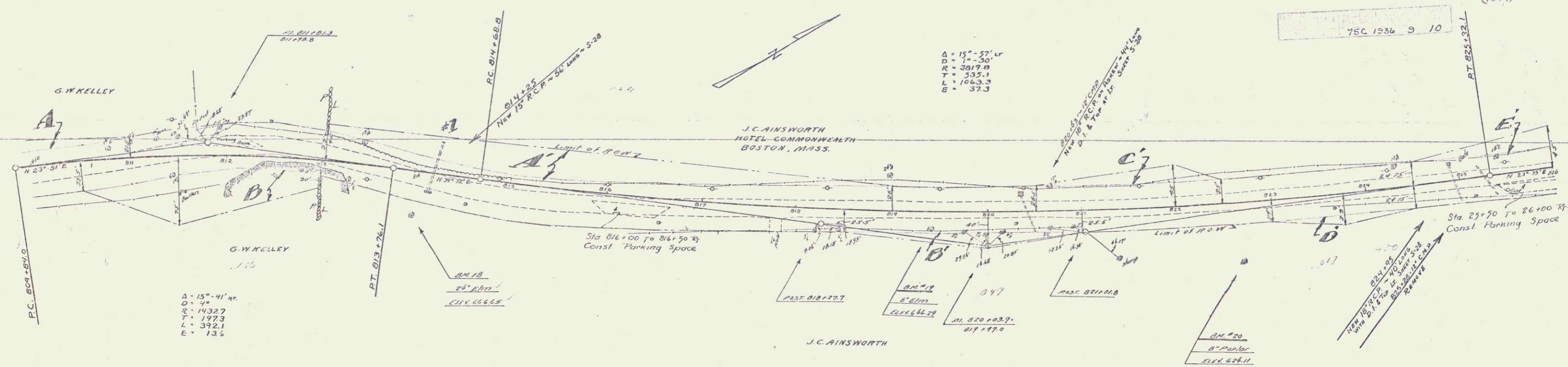


NRH
 75C 1936 9 47
 (1935)

75C 1936 9 10

$\Delta = 15^\circ - 57' 17''$
 $D = 7^\circ - 30'$
 $R = 3817.8$
 $T = 535.1$
 $L = 1063.3$
 $E = 37.3$



$\Delta = 15^\circ - 41' 00''$
 $D = 4'$
 $R = 1432.7$
 $T = 197.3$
 $L = 392.1$
 $E = 13.6$

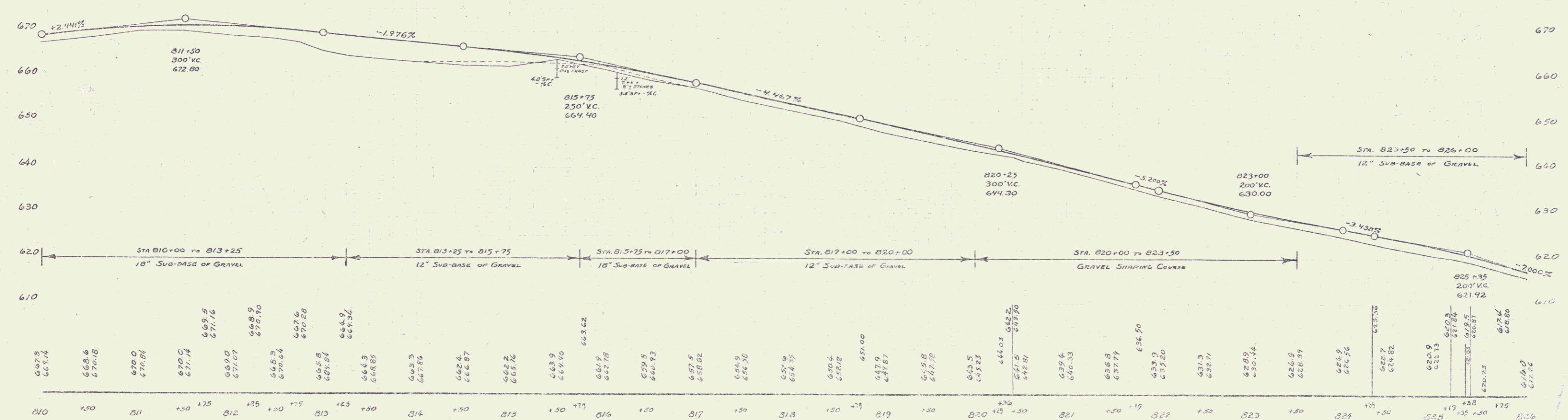
BM 18
 2' ELM
 ELEV 666.85

BM 19
 5' ELM
 ELEV 666.79

BM 20
 8' POPLAR
 ELEV 626.11

PARCEL	INSTRUMENT	DATE	GRANTOR	GRANTEE	RECORDED	REMARKS
A-B	W.D.	11-10-35	Geo. W. KELLEY	Staff	25 232	11-10-35 214425
110000	A.C.D.	11-13-35	J.C. AINSWORTH	Staff	25 232	11-10-35 214425

A.W. Wood
 A.C. Wood



BM #18 Spike in Roof of ELM 46 ft Rt Sta 814+00 ELEV 666.85
 BM #19 Spike in Roof of ELM 16 ft Rt Sta 819+40 ELEV 666.79
 BM #20 Spike in Roof of Poplar 42 ft Rt Sta 822+67 ELEV 626.11

Series F.H. No 75C
 Sheet 9 of 10
 Series N.H. No 75C (1935)
 Sheet 9 of 11