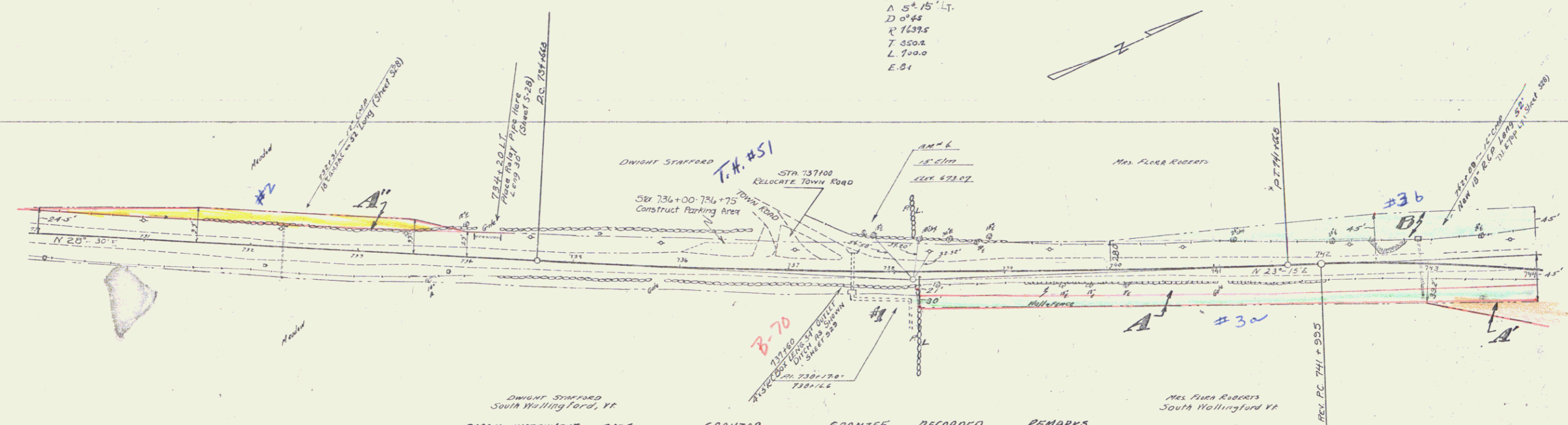
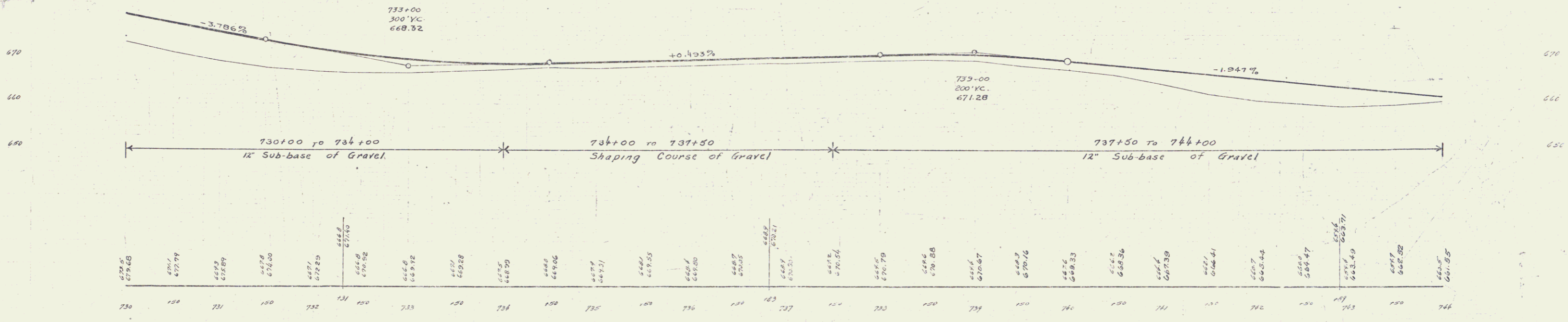


A 5° 15' Lt.
 D 0° 45'
 R 1637.5
 T 550.2
 L 700.0
 E. 81



PARCEL INSTRUMENT	DATE	GRANTOR	GRANTEE	RECORDED WALLINGFORD	REMARKS
A-D-C-D-E	D.C.D.	7-26-35 FLORA ROBERTS ET AL	STAFF.	BOOK PAGE DATE CUL #1	
A'	W.D.	1-18-36 "	"	25 216 7-31-35	
A"	W.D.	7-26-35 DWIGHT D. STAFFORD	"	25 303 1-18-36	
			"	25 208 7-27-35	738+00



B.M. #4 Same as Root of 15" E.L.M. 5' Lt. Sta. 7371.70 Elev. 674.07